

Data Path : Z:\pestpcbsrv\HPCHEM1\FID_E\Data\FE072823AL\
 Data File : FE043615.D
 Signal(s) : FID1B.ch
 Acq On : 29 Jul 2023 00:29
 Operator : YP\AJ
 Sample : 03813-06
 Misc :
 ALS Vial : 36 Sample Multiplier: 1

Instrument :
 FID_E
ClientSampleId :
 PLAUDERVILLE-2-EPH-2

Integration File: sample.E
 Quant Time: Jul 29 04:26:36 2023
 Quant Method : Z:\pestpcbsrv\HPCHEM1\FID_E\methods\Aliphatic EPH 071323.M
 Quant Title : GC Extractables
 QLast Update : Thu Jul 13 03:02:53 2023
 Response via : Initial Calibration
 Integrator: ChemStation

Volume Inj. : 1 ul
 Signal Phase : Rxi-1ms
 Signal Info : 20M x 0.18mm x 0.18um

Compound	R.T.	Response	Conc Units

System Monitoring Compounds			
9) S ortho-Terphenyl (SURR)	11.886	6907393	38.574 ug/ml
Spiked Amount	50.000	Recovery	= 77.15%
12) S 1-chlorooctadecane (S...	13.323	5194050	39.530 ug/ml
Spiked Amount	50.000	Recovery	= 79.06%

Target Compounds

(f)=RT Delta > 1/2 Window

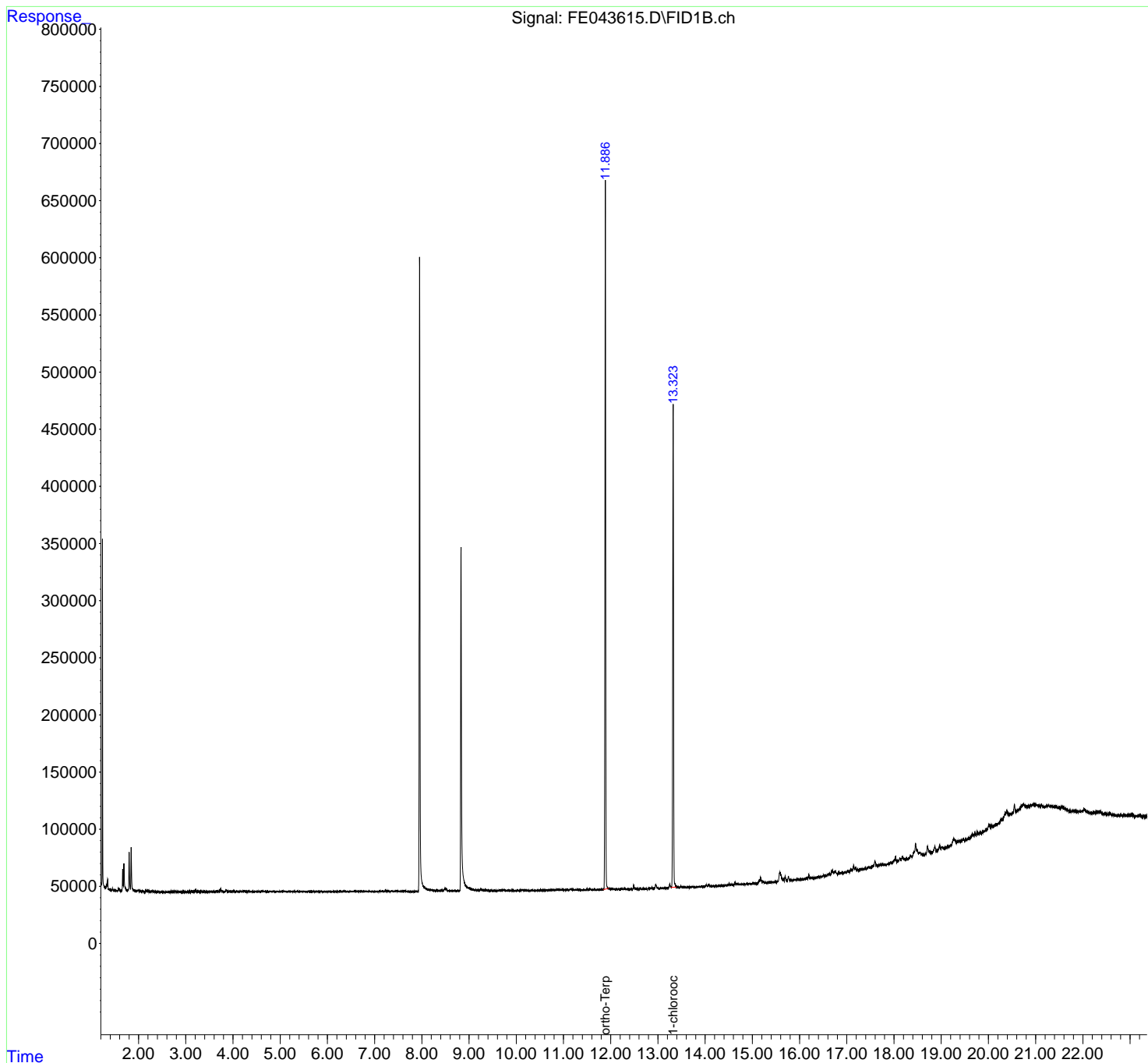
(m)=manual int.

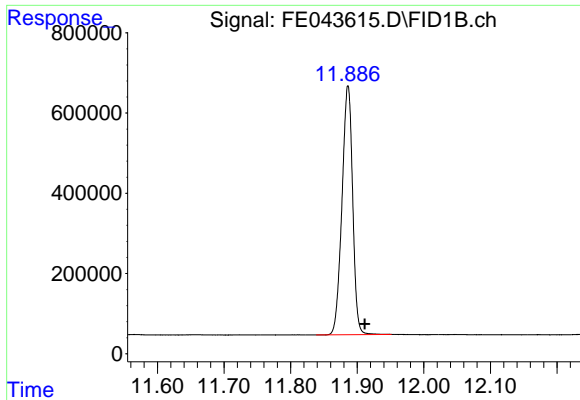
Data Path : Z:\pestpcbsrv\HPCHEM1\FID_E\Data\FE072823AL\
 Data File : FE043615.D
 Signal(s) : FID1B.ch
 Acq On : 29 Jul 2023 00:29
 Operator : YP\AJ
 Sample : 03813-06
 Misc :
 ALS Vial : 36 Sample Multiplier: 1

Instrument :
 FID_E
 ClientSampleId :
 PLAUDERVILLE-2-EPH-2

Integration File: sample.E
 Quant Time: Jul 29 04:26:36 2023
 Quant Method : Z:\pestpcbsrv\HPCHEM1\FID_E\methods\Aliphatic EPH 071323.M
 Quant Title : GC Extractables
 QLast Update : Thu Jul 13 03:02:53 2023
 Response via : Initial Calibration
 Integrator: ChemStation

Volume Inj. : 1 ul
 Signal Phase : Rxi-1ms
 Signal Info : 20M x 0.18mm x 0.18um

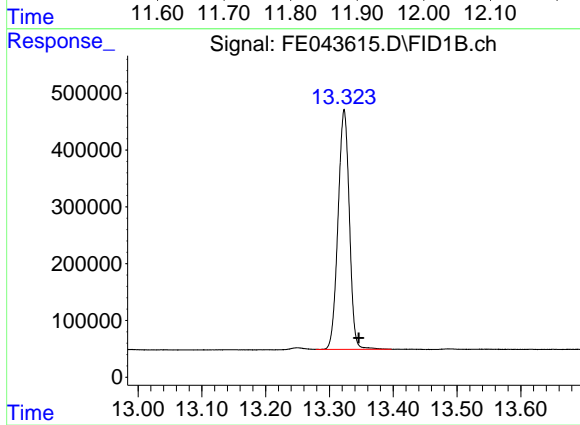




#9 ortho-Terphenyl (SURR)

R.T.: 11.886 min
Delta R.T.: -0.025 min
Response: 6907393
Conc: 38.57 ug/ml

Instrument :
FID_E
ClientSampleId :
PLAUDERVILLE-2-EPH-2



#12 1-chlorooctadecane (SURR)

R.T.: 13.323 min
Delta R.T.: -0.023 min
Response: 5194050
Conc: 39.53 ug/ml