

Data Path : Z:\pestpcbsrv\HPCHEM1\FID\_E\Data\FE073125AL\  
 Data File : FE055087.D  
 Signal(s) : FID1B.ch  
 Acq On : 31 Jul 2025 10:00  
 Operator : YP\AJ  
 Sample : I.BLK  
 Misc :  
 ALS Vial : 1 Sample Multiplier: 1

Integration File: autoint1.e  
 Quant Time: Aug 01 00:22:42 2025  
 Quant Method : Z:\pestpcbsrv\HPCHEM1\FID\_E\methods\Aliphatic EPH 072625.M  
 Quant Title : GC Extractables  
 QLast Update : Sat Jul 26 03:55:28 2025  
 Response via : Initial Calibration  
 Integrator: ChemStation

Volume Inj. : 1 ul  
 Signal Phase : Rxi-1ms  
 Signal Info : 20M x 0.18mm x 0.18um

Compound	R.T.	Response	Conc	Units
-----				
System Monitoring Compounds				
Target Compounds				
-----				

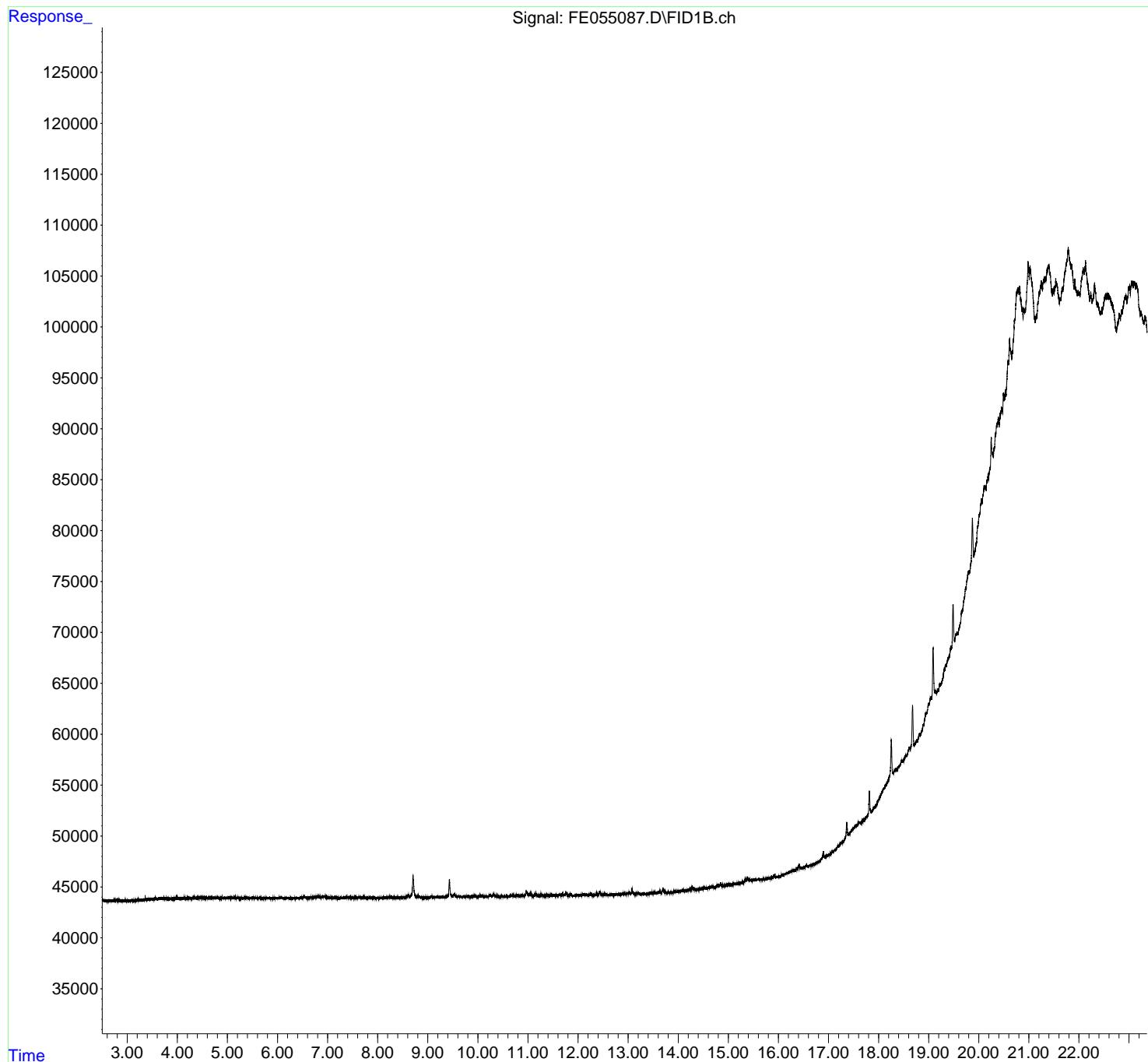
(f)=RT Delta > 1/2 Window

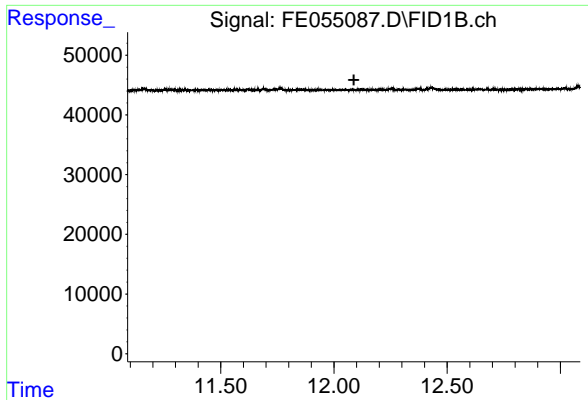
(m)=manual int.

Data Path : Z:\pestpcbsrv\HPCHEM1\FID\_E\Data\FE073125AL\  
 Data File : FE055087.D  
 Signal(s) : FID1B.ch  
 Acq On : 31 Jul 2025 10:00  
 Operator : YP\AJ  
 Sample : I.BLK  
 Misc :  
 ALS Vial : 1 Sample Multiplier: 1

Integration File: autoint1.e  
 Quant Time: Aug 01 00:22:42 2025  
 Quant Method : Z:\pestpcbsrv\HPCHEM1\FID\_E\methods\Aliphatic EPH 072625.M  
 Quant Title : GC Extractables  
 QLast Update : Sat Jul 26 03:55:28 2025  
 Response via : Initial Calibration  
 Integrator: ChemStation

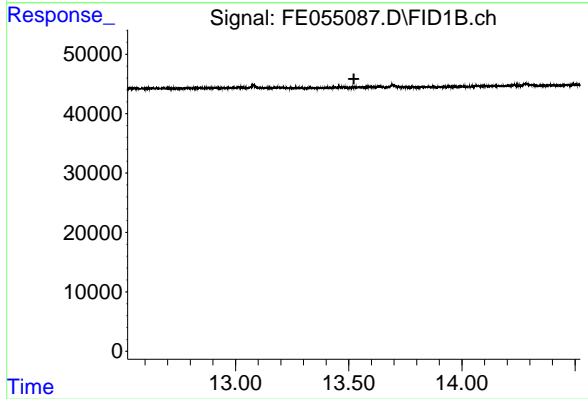
Volume Inj. : 1 ul  
 Signal Phase : Rxi-1ms  
 Signal Info : 20M x 0.18mm x 0.18um





#9 ortho-Terphenyl (SURRE)

R.T.: 0.000 min  
Exp R.T. : 12.088 min  
Response: 0  
Conc: N.D.



#12 1-chlorooctadecane (SURRE)

R.T.: 0.000 min  
Exp R.T. : 13.523 min  
Response: 0  
Conc: N.D.