

Data Path : Z:\pestpcbsrv\HPCHEM1\FID_E\Data\FE080525AL\
 Data File : FE055140.D
 Signal(s) : FID1B.ch
 Acq On : 05 Aug 2025 20:26
 Operator : YP\AJ
 Sample : I.BLK
 Misc :
 ALS Vial : 1 Sample Multiplier: 1

Integration File: autoint1.e
 Quant Time: Aug 06 00:55:07 2025
 Quant Method : Z:\pestpcbsrv\HPCHEM1\FID_E\methods\Aliphatic EPH 080125.M
 Quant Title : GC Extractables
 QLast Update : Fri Aug 01 13:47:09 2025
 Response via : Initial Calibration
 Integrator: ChemStation

Volume Inj. : 1 ul
 Signal Phase : Rxi-1ms
 Signal Info : 20M x 0.18mm x 0.18um

Compound	R.T.	Response	Conc Units

System Monitoring Compounds			
Target Compounds			
16) T n-Octacosane (C28)	17.357	32405	0.273 ug/ml
17) T n-Tricontane (C30)	18.246	118748	0.965 ug/ml
18) T n-Dotriacontane (C32)	19.079	122556	1.004 ug/ml
19) T n-Tetratriacontane (C34)	19.864	85327	0.730 ug/ml
20) T n-Hexatriacontane (C36)	20.607	75286	0.689 ug/ml
21) T n-Octatriacontane (C38)	21.383	134905	1.248 ug/ml

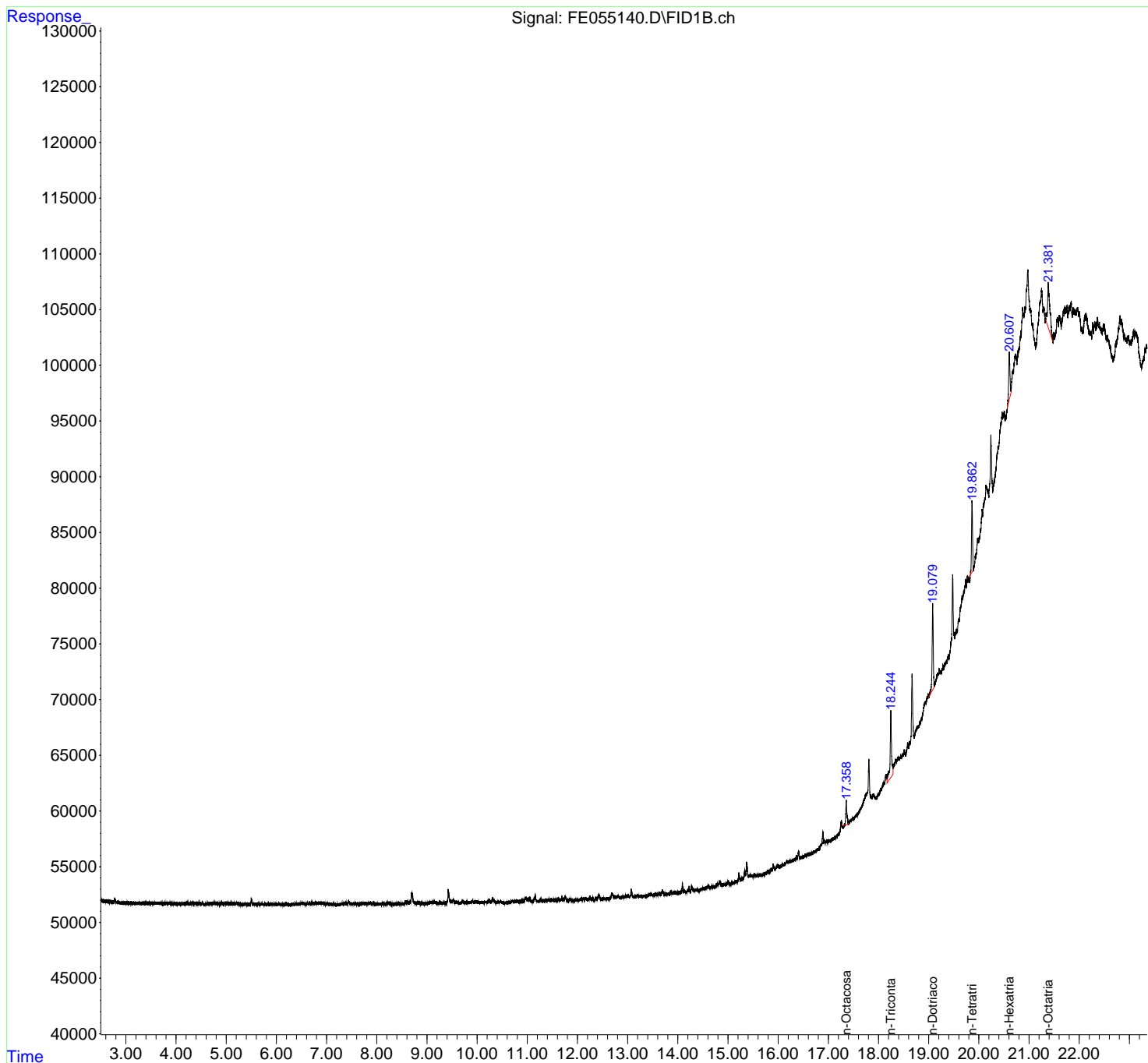
(f)=RT Delta > 1/2 Window

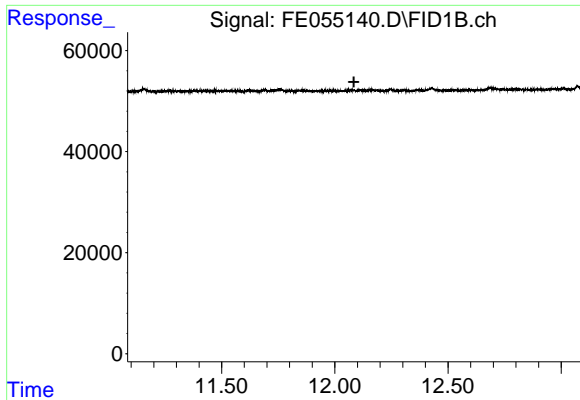
(m)=manual int.

Data Path : Z:\pestpcbsrv\HPCHEM1\FID_E\Data\FE080525AL\
Data File : FE055140.D
Signal(s) : FID1B.ch
Acq On : 05 Aug 2025 20:26
Operator : YP\AJ
Sample : I.BLK
Misc :
ALS Vial : 1 Sample Multiplier: 1

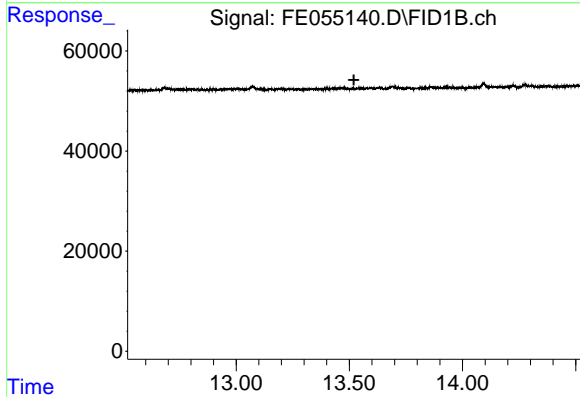
Integration File: autoint1.e
Quant Time: Aug 06 00:55:07 2025
Quant Method : Z:\pestpcbsrv\HPCHEM1\FID_E\methods\Aliphatic EPH 080125.M
Quant Title : GC Extractables
QLast Update : Fri Aug 01 13:47:09 2025
Response via : Initial Calibration
Integrator: ChemStation

Volume Inj. : 1 ul
Signal Phase : Rxi-1ms
Signal Info : 20M x 0.18mm x 0.18um

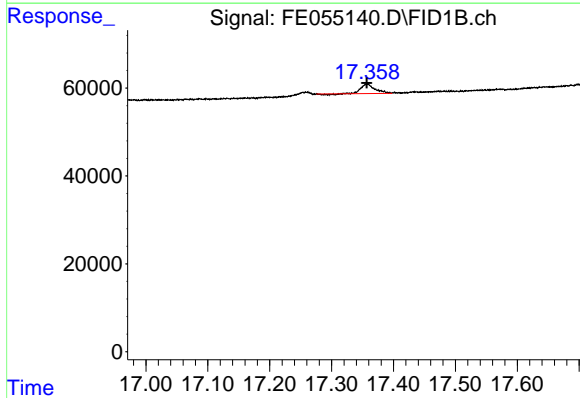




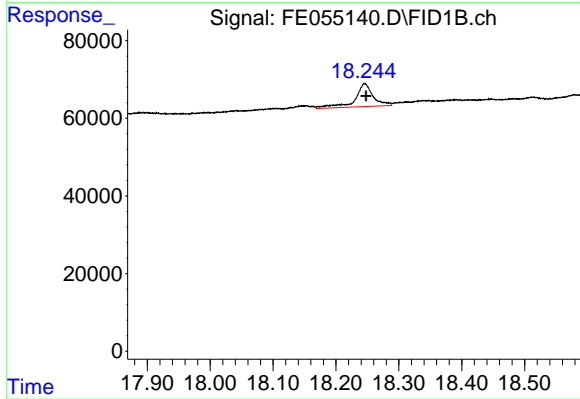
#9 ortho-Terphenyl (SURR)
 R.T.: 0.000 min
 Exp R.T. : 12.084 min
 Response: 0
 Conc: N.D.



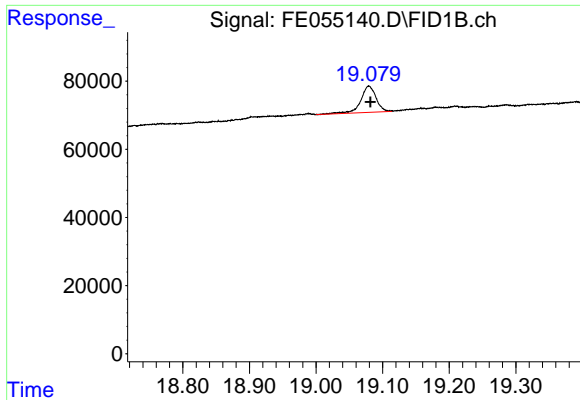
#12 1-chlorooctadecane (SURR)
 R.T.: 0.000 min
 Exp R.T. : 13.520 min
 Response: 0
 Conc: N.D.



#16 n-Octacosane (C28)
 R.T.: 17.357 min
 Delta R.T.: 0.000 min
 Response: 32405
 Conc: 0.27 ug/ml

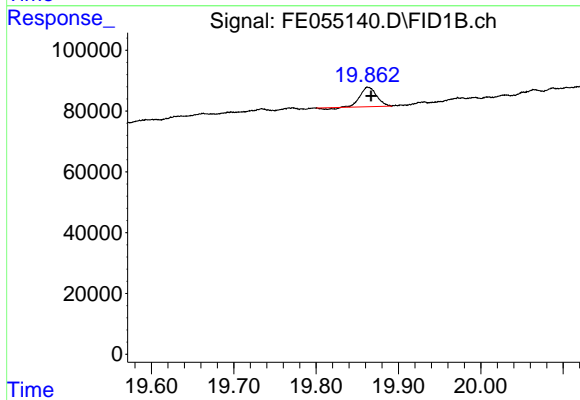


#17 n-Tricontane (C30)
 R.T.: 18.246 min
 Delta R.T.: -0.002 min
 Response: 118748
 Conc: 0.97 ug/ml



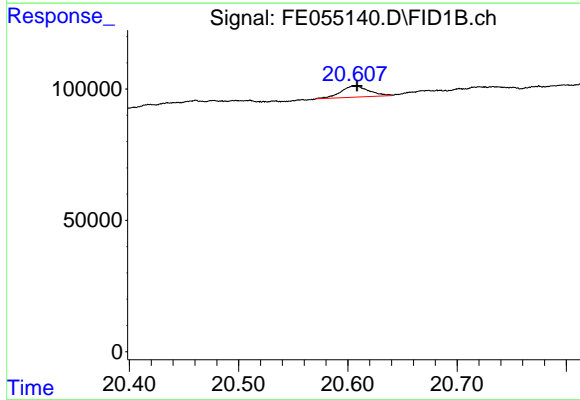
#18 n-Dotriacontane (C32)

R.T.: 19.079 min
Delta R.T.: -0.002 min
Response: 122556
Conc: 1.00 ug/ml



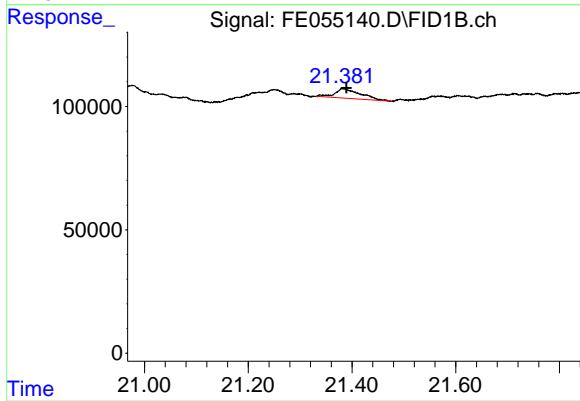
#19 n-Tetracontane (C34)

R.T.: 19.864 min
Delta R.T.: -0.003 min
Response: 85327
Conc: 0.73 ug/ml



#20 n-Hexatriacontane (C36)

R.T.: 20.607 min
Delta R.T.: -0.002 min
Response: 75286
Conc: 0.69 ug/ml



#21 n-Octatriacontane (C38)

R.T.: 21.383 min
Delta R.T.: -0.007 min
Response: 134905
Conc: 1.25 ug/ml