

Data Path : Z:\pestpcbsrv\HPCHEM1\FID\_E\Data\FE080624AL\  
 Data File : FE049473.D  
 Signal(s) : FID1B.ch  
 Acq On : 06 Aug 2024 13:25  
 Operator : YP\AJ  
 Sample : 20 PPM ALIPHATIC HC STD  
 Misc :  
 ALS Vial : 3 Sample Multiplier: 1

Instrument :  
 FID\_E  
 ClientSampleId :

Integration File: autoint1.e  
 Quant Time: Aug 07 01:56:49 2024  
 Quant Method : Z:\pestpcbsrv\HPCHEM1\FID\_E\methods\Aliphatic EPH 071724.M  
 Quant Title : GC Extractables  
 QLast Update : Wed Jul 17 14:26:40 2024  
 Response via : Initial Calibration  
 Integrator: ChemStation

Volume Inj. : 1 ul  
 Signal Phase : Rxi-1ms  
 Signal Info : 20M x 0.18mm x 0.18um

Compound	R.T.	Response	Conc Units
-----			
System Monitoring Compounds			
9) S ortho-Terphenyl (SURR)	11.893	3128351	20.169 ug/ml
Spiked Amount	50.000	Recovery	= 40.34%
12) S 1-chlorooctadecane (S...	13.328	2377805	20.352 ug/ml
Spiked Amount	50.000	Recovery	= 40.70%
Target Compounds			
1) T n-Nonane (C9)	3.282	2926833	19.462 ug/ml
2) T n-Decane (C10)	4.532	3016065	19.527 ug/ml
3) T A~Naphthalene (C11.7)	6.239	3063066	19.660 ug/ml
4) T n-Dodecane (C12)	6.699	3006914	19.528 ug/ml
5) T A~2-methylnaphthalene...	7.334	2799097	19.234 ug/ml
6) T n-Tetradecane (C14)	8.527	2994957	19.733 ug/ml
7) T n-Hexadecane (C16)	10.134	3031463	19.989 ug/ml
8) T n-Octadecane (C18)	11.575	3048034	20.075 ug/ml
10) T n-Eicosane (C20)	12.884	2898237	20.042 ug/ml
11) T n-Heneicosane (C21)	13.494	2845545	20.066 ug/ml
13) T n-Docosane (C22)	14.081	2839134	20.208 ug/ml
14) T n-Tetracosane (C24)	15.182	2857998	20.392 ug/ml
15) T n-Hexacosane (C26)	16.202	2851526	20.336 ug/ml
16) T n-Octacosane (C28)	17.150	2911809	20.804 ug/ml
17) T n-Tricontane (C30)	18.037	3112876	21.340 ug/ml
18) T n-Dotriacontane (C32)	18.867	3168718	21.550 ug/ml
19) T n-Tetratriacontane (C34)	19.650	3159859	21.633 ug/ml
20) T n-Hexatriacontane (C36)	20.389	3129145	21.706 ug/ml
21) T n-Octatriacontane (C38)	21.118	3120893	20.849 ug/ml
22) T n-Tetracontane (C40)	22.015	3048570	20.202 ug/ml

(f)=RT Delta > 1/2 Window

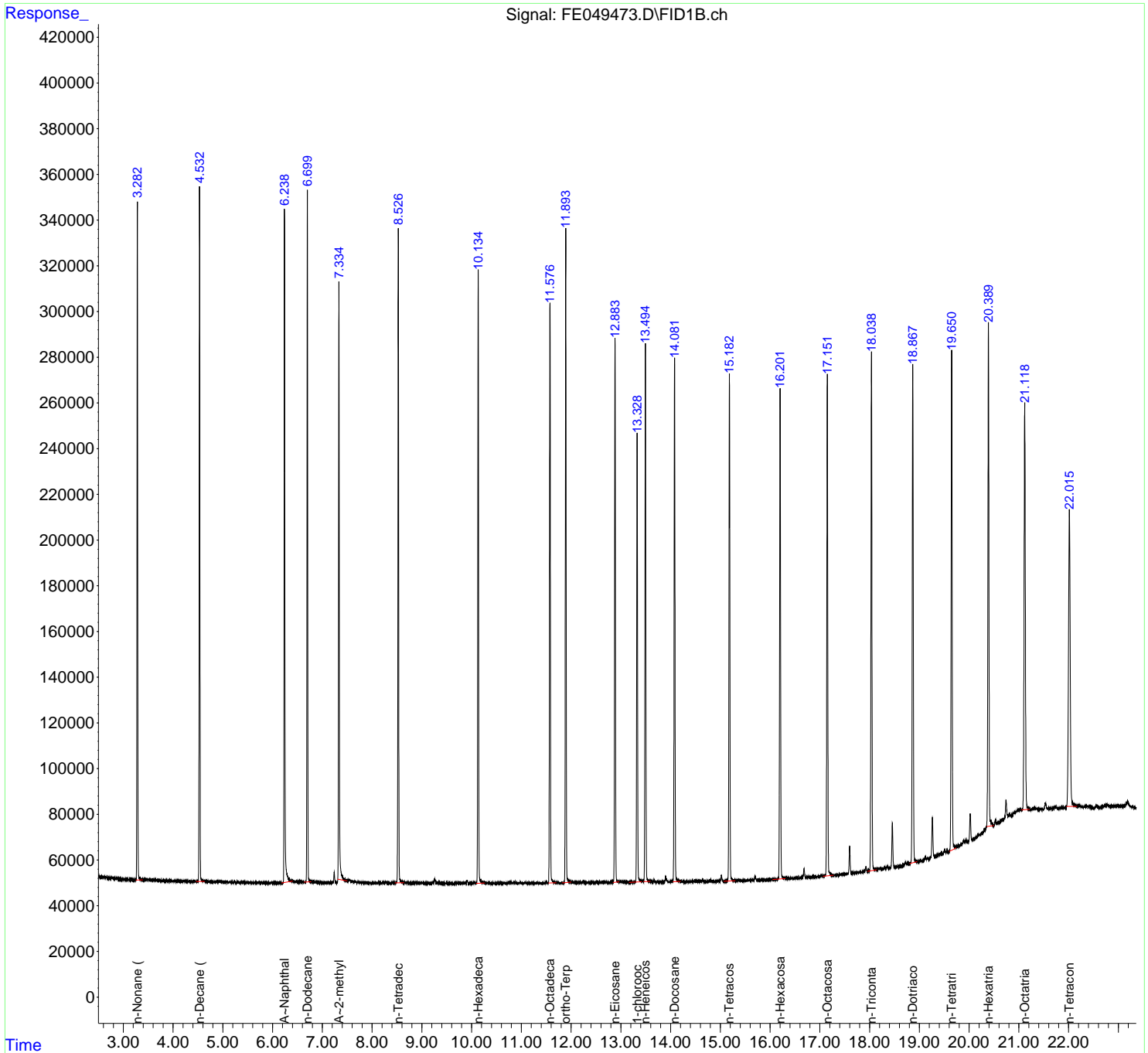
(m)=manual int.

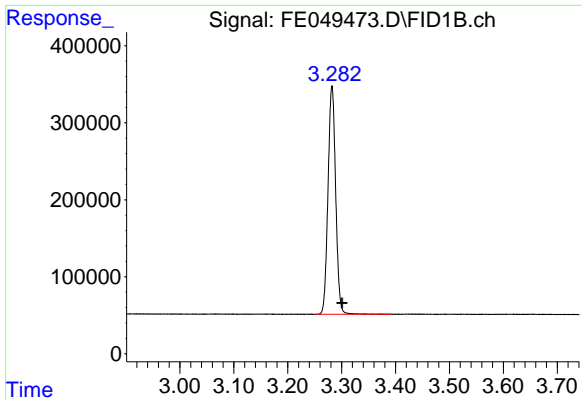
Data Path : Z:\pestpcbsrv\HPCHEM1\FID\_E\Data\FE080624AL\  
 Data File : FE049473.D  
 Signal(s) : FID1B.ch  
 Acq On : 06 Aug 2024 13:25  
 Operator : YP\AJ  
 Sample : 20 PPM ALIPHATIC HC STD  
 Misc :  
 ALS Vial : 3 Sample Multiplier: 1

Instrument :  
 FID\_E  
 ClientSampleId :

Integration File: autoint1.e  
 Quant Time: Aug 07 01:56:49 2024  
 Quant Method : Z:\pestpcbsrv\HPCHEM1\FID\_E\methods\Aliphatic EPH 071724.M  
 Quant Title : GC Extractables  
 QLast Update : Wed Jul 17 14:26:40 2024  
 Response via : Initial Calibration  
 Integrator: ChemStation

Volume Inj. : 1 ul  
 Signal Phase : Rxi-1ms  
 Signal Info : 20M x 0.18mm x 0.18um

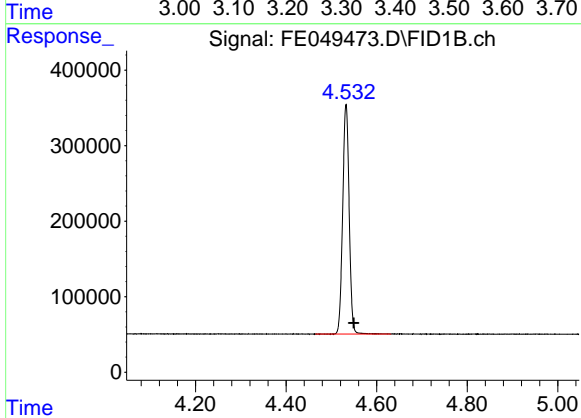




#1 n-Nonane (C9)

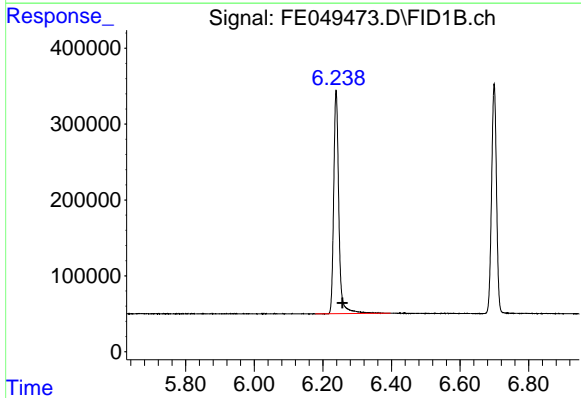
R.T.: 3.282 min  
 Delta R.T.: -0.019 min  
 Response: 2926833  
 Conc: 19.46 ug/ml

Instrument :  
 FID\_E  
 ClientSampleId :



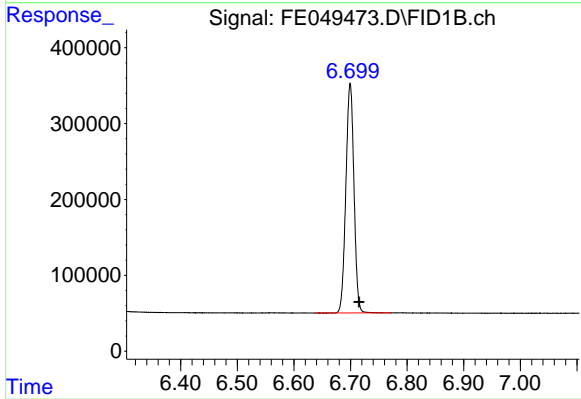
#2 n-Decane (C10)

R.T.: 4.532 min  
 Delta R.T.: -0.017 min  
 Response: 3016065  
 Conc: 19.53 ug/ml



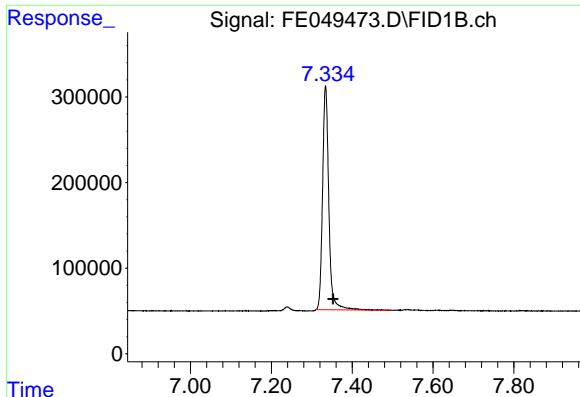
#3 A~Naphthalene (C11.7)

R.T.: 6.239 min  
 Delta R.T.: -0.018 min  
 Response: 3063066  
 Conc: 19.66 ug/ml



#4 n-Dodecane (C12)

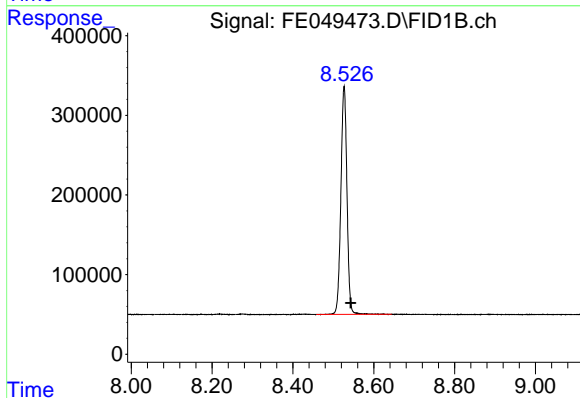
R.T.: 6.699 min  
 Delta R.T.: -0.016 min  
 Response: 3006914  
 Conc: 19.53 ug/ml



#5 A~2-methylnaphthalene (C12.89)

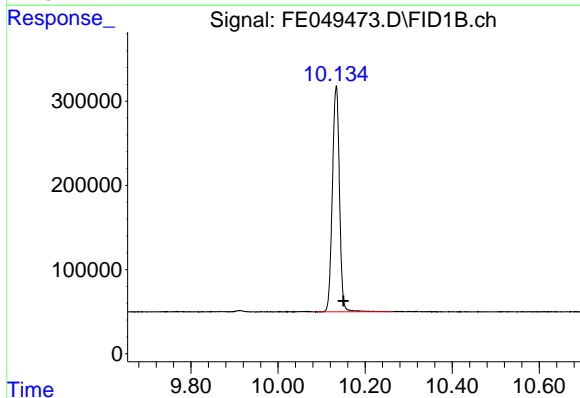
R.T.: 7.334 min  
 Delta R.T.: -0.018 min  
 Response: 2799097  
 Conc: 19.23 ug/ml

Instrument :  
 FID\_E  
 ClientSampleId :



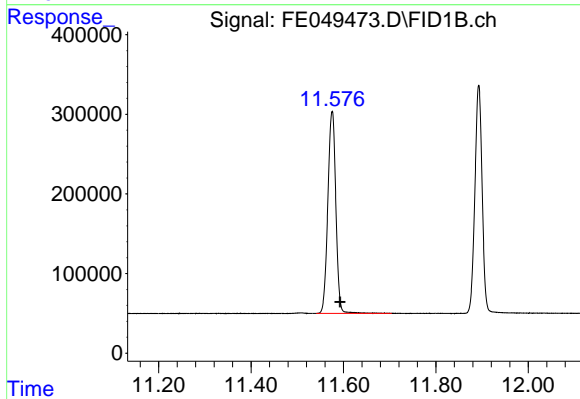
#6 n-Tetradecane (C14)

R.T.: 8.527 min  
 Delta R.T.: -0.016 min  
 Response: 2994957  
 Conc: 19.73 ug/ml



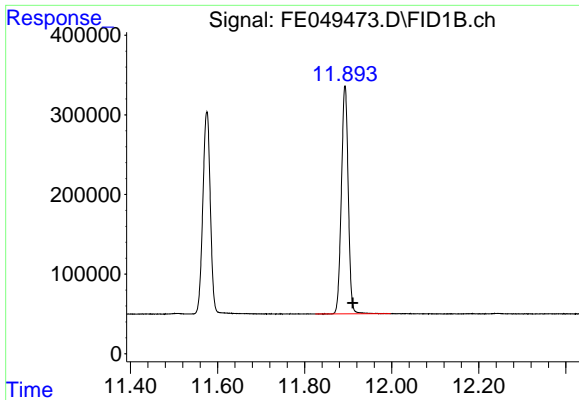
#7 n-Hexadecane (C16)

R.T.: 10.134 min  
 Delta R.T.: -0.016 min  
 Response: 3031463  
 Conc: 19.99 ug/ml



#8 n-Octadecane (C18)

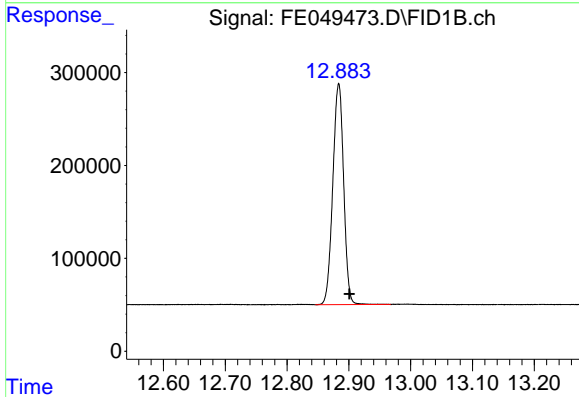
R.T.: 11.575 min  
 Delta R.T.: -0.018 min  
 Response: 3048034  
 Conc: 20.08 ug/ml



#9 ortho-Terphenyl (SURR)

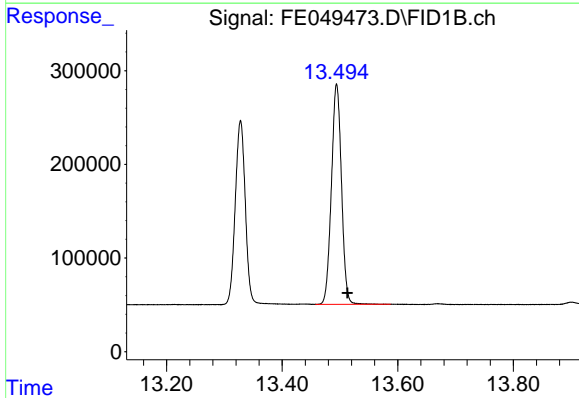
R.T.: 11.893 min  
 Delta R.T.: -0.018 min  
 Response: 3128351  
 Conc: 20.17 ug/ml

Instrument :  
 FID\_E  
 ClientSampleId :



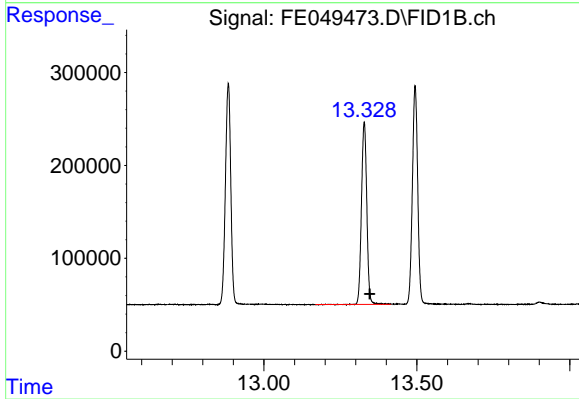
#10 n-Eicosane (C20)

R.T.: 12.884 min  
 Delta R.T.: -0.018 min  
 Response: 2898237  
 Conc: 20.04 ug/ml



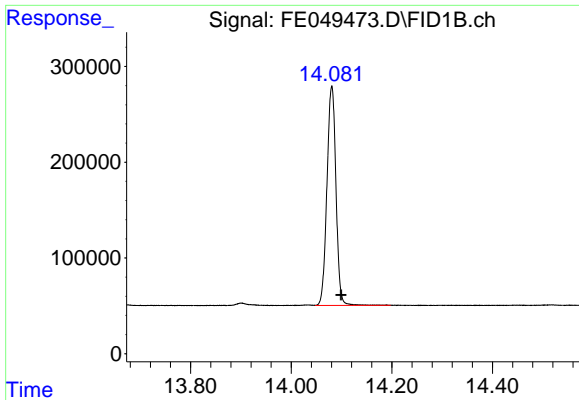
#11 n-Heneicosane (C21)

R.T.: 13.494 min  
 Delta R.T.: -0.019 min  
 Response: 2845545  
 Conc: 20.07 ug/ml



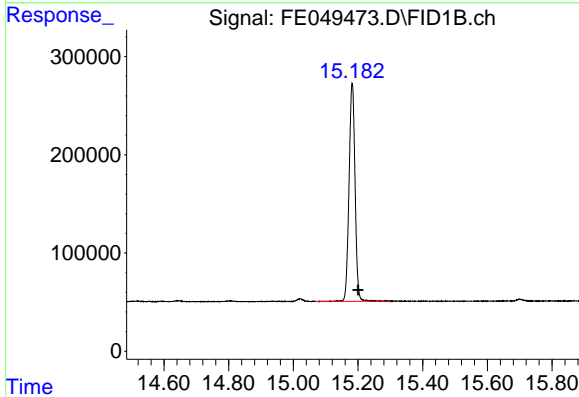
#12 1-chlorooctadecane (SURR)

R.T.: 13.328 min  
 Delta R.T.: -0.018 min  
 Response: 2377805  
 Conc: 20.35 ug/ml

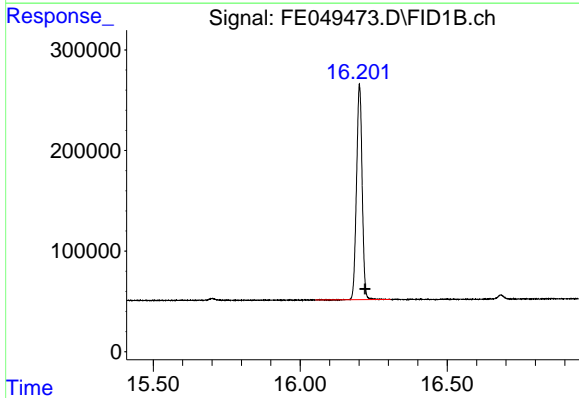


#13 n-Docosane (C22)  
 R.T.: 14.081 min  
 Delta R.T.: -0.018 min  
 Response: 2839134  
 Conc: 20.21 ug/ml

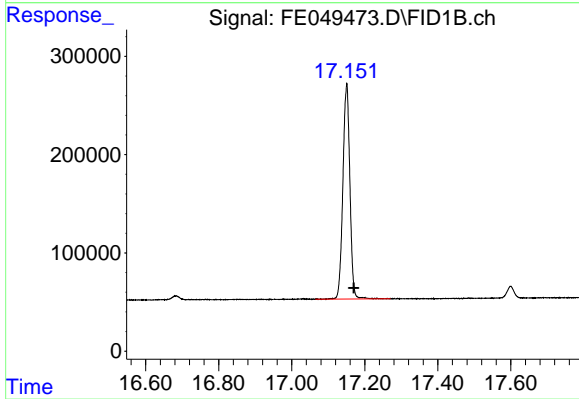
Instrument :  
 FID\_E  
 ClientSampleId :



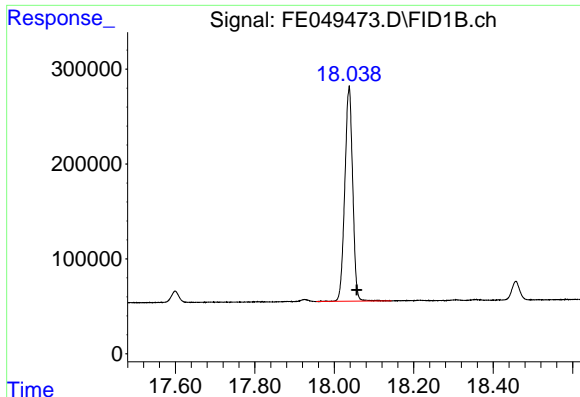
#14 n-Tetracosane (C24)  
 R.T.: 15.182 min  
 Delta R.T.: -0.018 min  
 Response: 2857998  
 Conc: 20.39 ug/ml



#15 n-Hexacosane (C26)  
 R.T.: 16.202 min  
 Delta R.T.: -0.019 min  
 Response: 2851526  
 Conc: 20.34 ug/ml



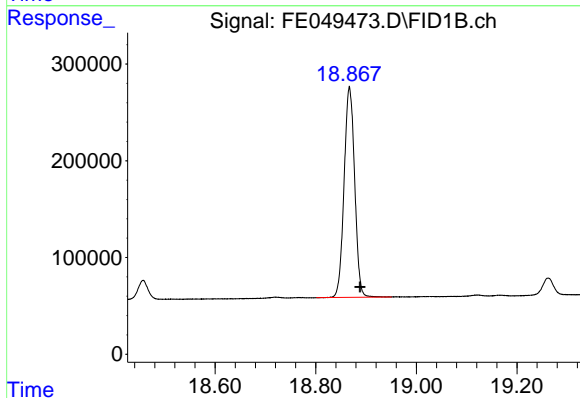
#16 n-Octacosane (C28)  
 R.T.: 17.150 min  
 Delta R.T.: -0.020 min  
 Response: 2911809  
 Conc: 20.80 ug/ml



#17 n-Tricontane (C30)

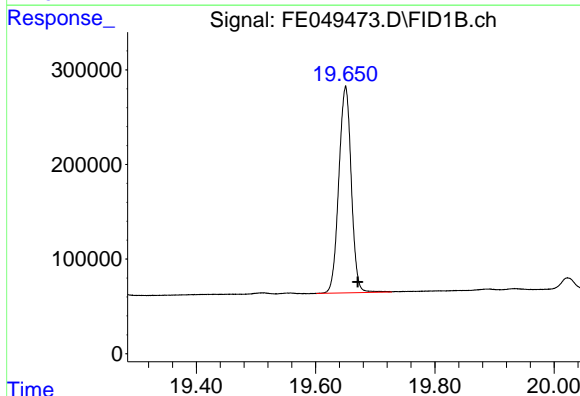
R.T.: 18.037 min  
Delta R.T.: -0.020 min  
Response: 3112876  
Conc: 21.34 ug/ml

Instrument :  
FID\_E  
ClientSampleId :



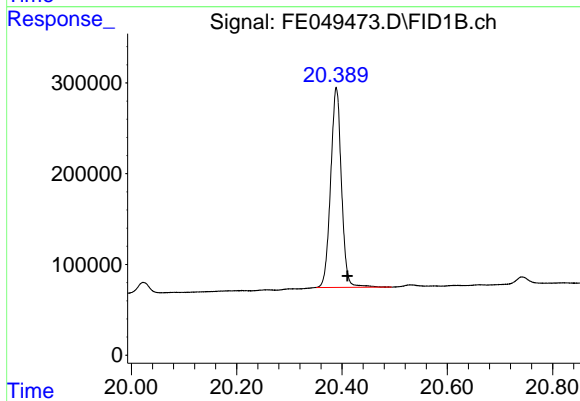
#18 n-Dotriacontane (C32)

R.T.: 18.867 min  
Delta R.T.: -0.021 min  
Response: 3168718  
Conc: 21.55 ug/ml



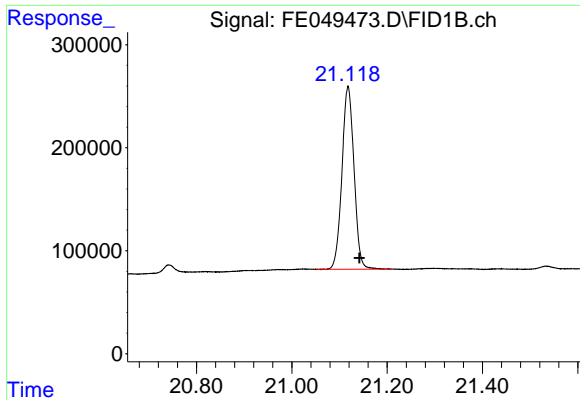
#19 n-Tetratriacontane (C34)

R.T.: 19.650 min  
Delta R.T.: -0.021 min  
Response: 3159859  
Conc: 21.63 ug/ml



#20 n-Hexatriacontane (C36)

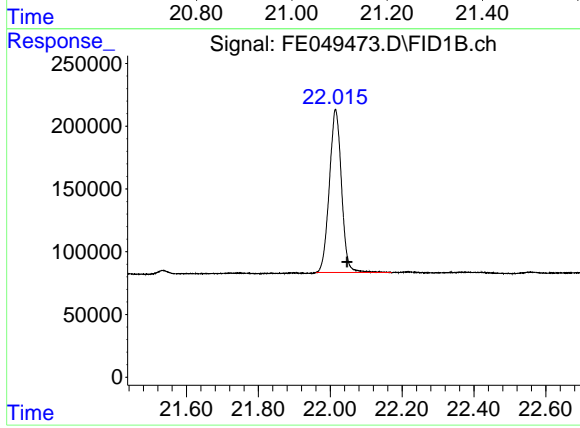
R.T.: 20.389 min  
Delta R.T.: -0.021 min  
Response: 3129145  
Conc: 21.71 ug/ml



#21 n-Octatriacontane (C38)

R.T.: 21.118 min  
Delta R.T.: -0.024 min  
Response: 3120893  
Conc: 20.85 ug/ml

Instrument :  
FID\_E  
ClientSampleId :



#22 n-Tetracontane (C40)

R.T.: 22.015 min  
Delta R.T.: -0.032 min  
Response: 3048570  
Conc: 20.20 ug/ml