

Data Path : Z:\pestpcbsrv\HPCHEM1\FID\_E\Data\FE080924AL\  
 Data File : FE049542.D  
 Signal(s) : FID1B.ch  
 Acq On : 09 Aug 2024 19:04  
 Operator : YP\AJ  
 Sample : P3478-09  
 Misc :  
 ALS Vial : 11 Sample Multiplier: 1

Instrument :  
 FID\_E  
 ClientSampleId :

Integration File: autoint1.e  
 Quant Time: Aug 10 01:22:29 2024  
 Quant Method : Z:\pestpcbsrv\HPCHEM1\FID\_E\methods\Aliphatic EPH 071724.M  
 Quant Title : GC Extractables  
 QLast Update : Wed Jul 17 14:26:40 2024  
 Response via : Initial Calibration  
 Integrator: ChemStation

Volume Inj. : 1 ul  
 Signal Phase : Rxi-1ms  
 Signal Info : 20M x 0.18mm x 0.18um

Compound	R.T.	Response	Conc Units
-----			
System Monitoring Compounds			
12) S 1-chlorooctadecane (S... Spiked Amount 50.000	13.325	3223973 Recovery =	27.594 ug/ml 55.19%
Target Compounds			
4) T n-Dodecane (C12)	6.696	58961	0.383 ug/ml
6) T n-Tetradecane (C14)	8.523	81008	0.534 ug/ml
-----			

(f)=RT Delta > 1/2 Window

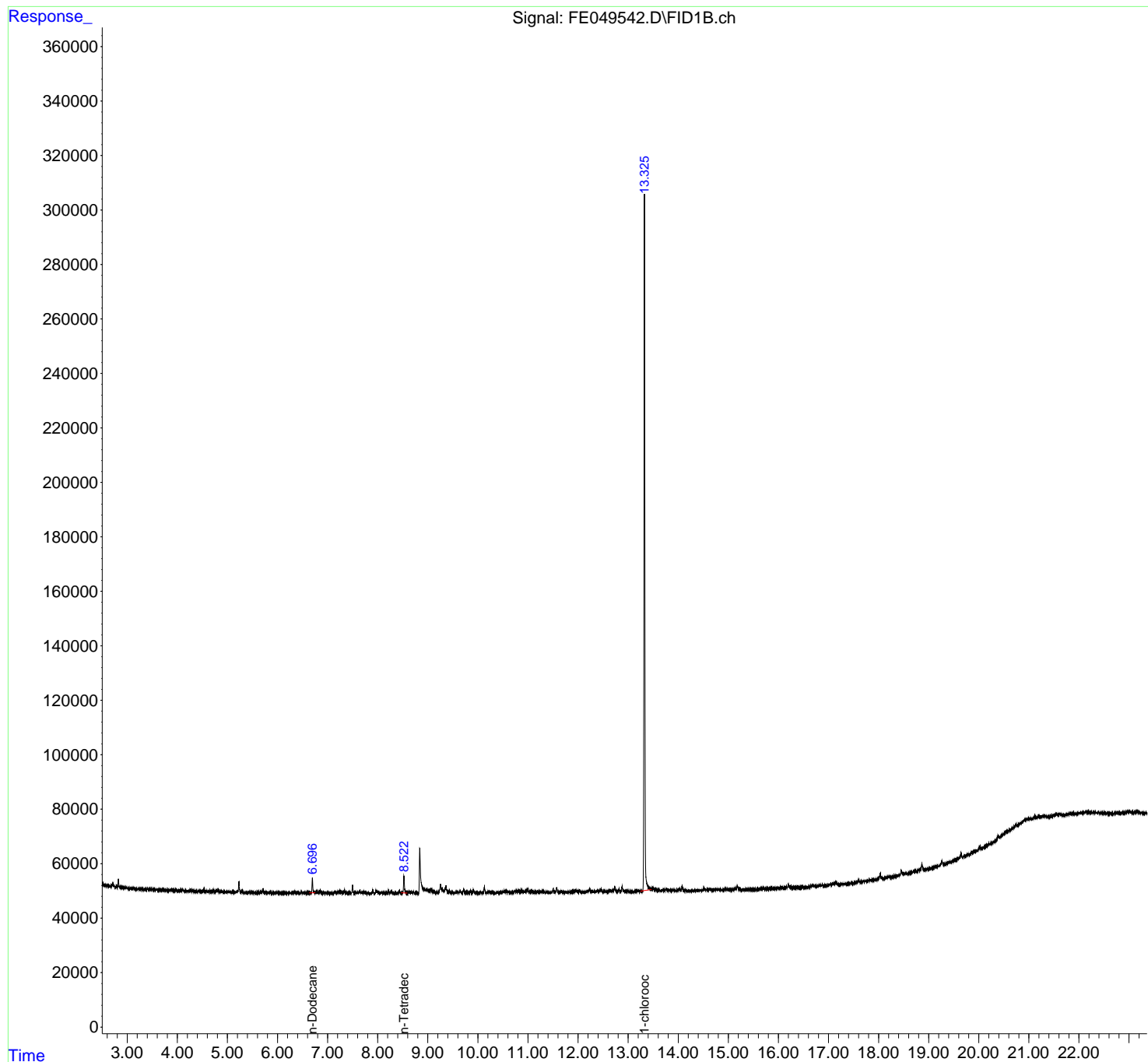
(m)=manual int.

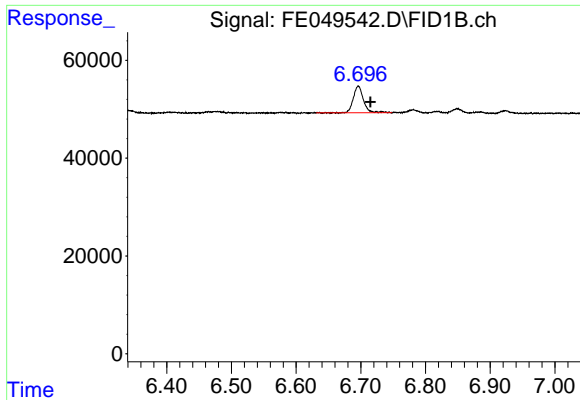
Data Path : Z:\pestpcbsrv\HPCHEM1\FID\_E\Data\FE080924AL\  
Data File : FE049542.D  
Signal(s) : FID1B.ch  
Acq On : 09 Aug 2024 19:04  
Operator : YP\AJ  
Sample : P3478-09  
Misc :  
ALS Vial : 11 Sample Multiplier: 1

Instrument :  
FID\_E  
ClientSampleId :

Integration File: autoint1.e  
Quant Time: Aug 10 01:22:29 2024  
Quant Method : Z:\pestpcbsrv\HPCHEM1\FID\_E\methods\Aliphatic EPH 071724.M  
Quant Title : GC Extractables  
QLast Update : Wed Jul 17 14:26:40 2024  
Response via : Initial Calibration  
Integrator: ChemStation

Volume Inj. : 1 ul  
Signal Phase : Rxi-1ms  
Signal Info : 20M x 0.18mm x 0.18um

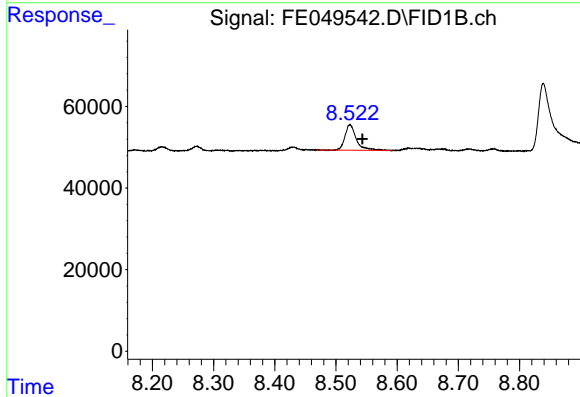




#4 n-Dodecane (C12)

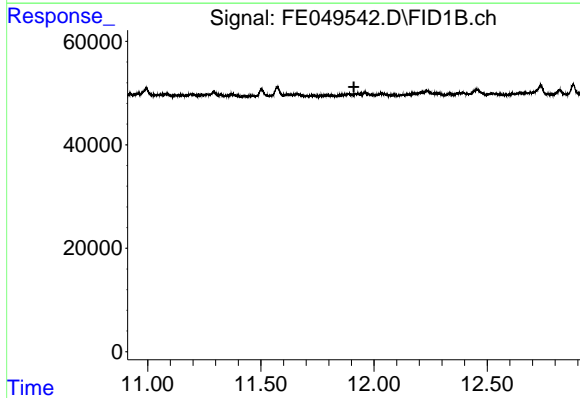
R.T.: 6.696 min  
 Delta R.T.: -0.019 min  
 Response: 58961  
 Conc: 0.38 ug/ml

Instrument :  
 FID\_E  
 ClientSampleId :



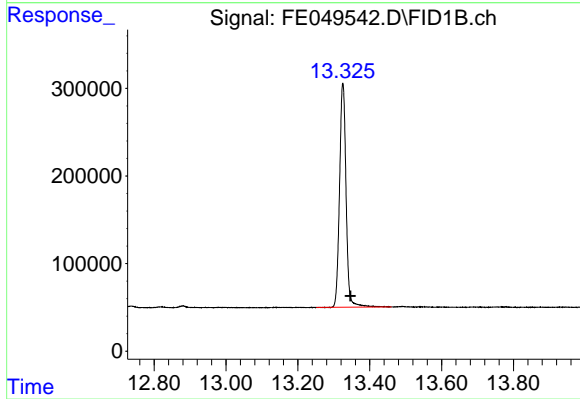
#6 n-Tetradecane (C14)

R.T.: 8.523 min  
 Delta R.T.: -0.020 min  
 Response: 81008  
 Conc: 0.53 ug/ml



#9 ortho-Terphenyl (SURR)

R.T.: 0.000 min  
 Exp R.T. : 11.911 min  
 Response: 0  
 Conc: N.D.



#12 1-chlorooctadecane (SURR)

R.T.: 13.325 min  
 Delta R.T.: -0.021 min  
 Response: 3223973  
 Conc: 27.59 ug/ml