

Data Path : Z:\pestpcbsrv\HPCHEM1\FID_E\Data\FE080924AL\
 Data File : FE049539.D
 Signal(s) : FID1B.ch
 Acq On : 09 Aug 2024 17:33
 Operator : YP\AJ
 Sample : P3476-05
 Misc :
 ALS Vial : 8 Sample Multiplier: 1

Instrument :
 FID_E
 ClientSampleId :
 MUL06

Integration File: autoint1.e
 Quant Time: Aug 10 01:22:04 2024
 Quant Method : Z:\pestpcbsrv\HPCHEM1\FID_E\methods\Aliphatic EPH 071724.M
 Quant Title : GC Extractables
 QLast Update : Wed Jul 17 14:26:40 2024
 Response via : Initial Calibration
 Integrator: ChemStation

Volume Inj. : 1 ul
 Signal Phase : Rxi-1ms
 Signal Info : 20M x 0.18mm x 0.18um

Compound	R.T.	Response	Conc Units

System Monitoring Compounds			
12) S 1-chlorooctadecane (S...	13.325	2650076	22.682 ug/ml
Spiked Amount	50.000	Recovery =	45.36%

Target Compounds

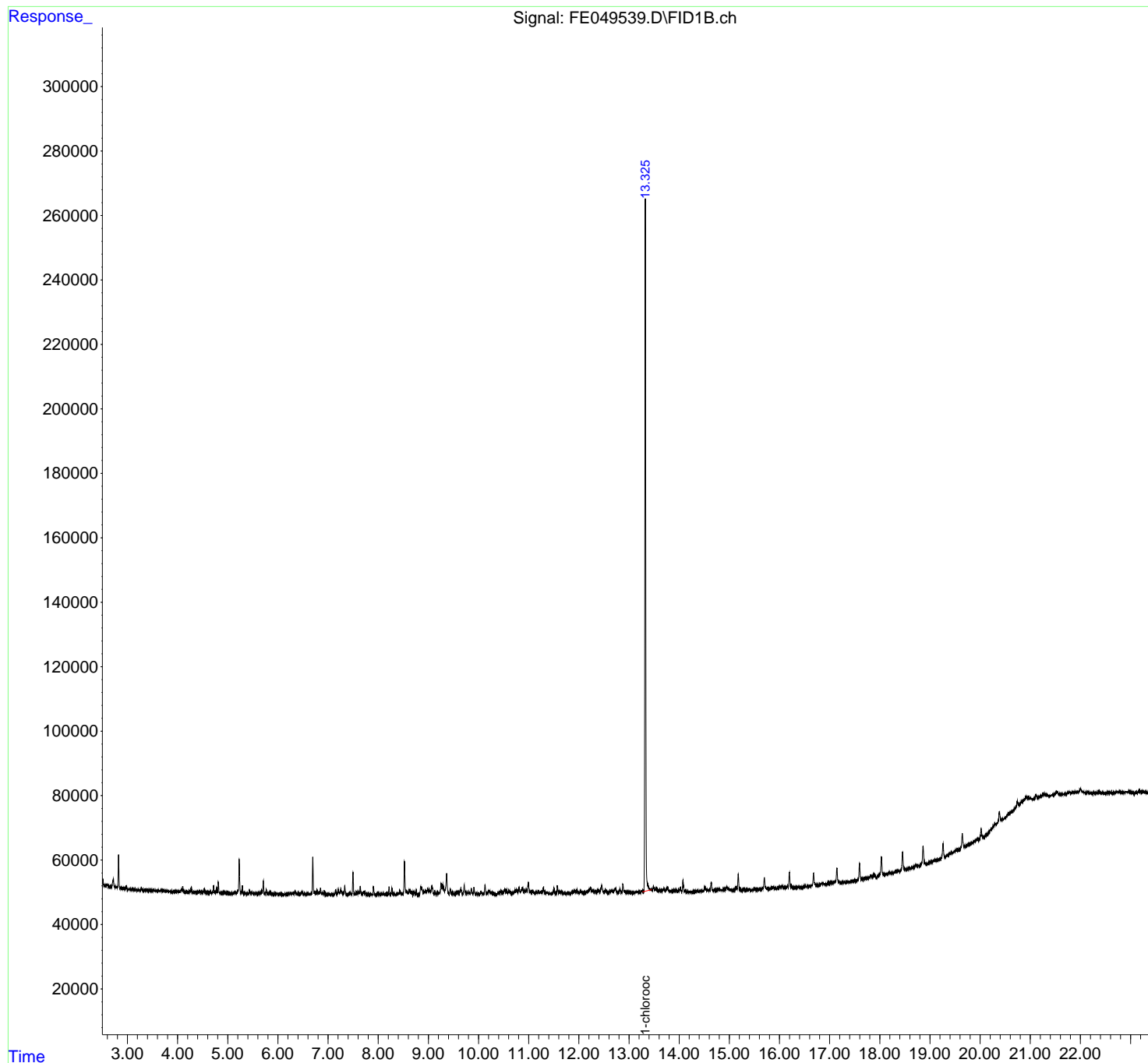
(f)=RT Delta > 1/2 Window (m)=manual int.

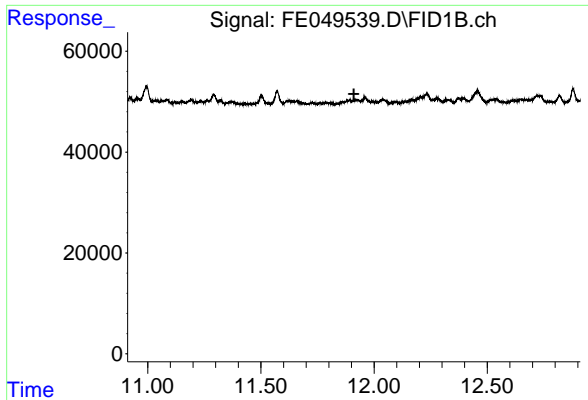
Data Path : Z:\pestpcbsrv\HPCHEM1\FID_E\Data\FE080924AL\
Data File : FE049539.D
Signal(s) : FID1B.ch
Acq On : 09 Aug 2024 17:33
Operator : YP\AJ
Sample : P3476-05
Misc :
ALS Vial : 8 Sample Multiplier: 1

Instrument :
FID_E
ClientSampleId :
MUL06

Integration File: autoint1.e
Quant Time: Aug 10 01:22:04 2024
Quant Method : Z:\pestpcbsrv\HPCHEM1\FID_E\methods\Aliphatic EPH 071724.M
Quant Title : GC Extractables
QLast Update : Wed Jul 17 14:26:40 2024
Response via : Initial Calibration
Integrator: ChemStation

Volume Inj. : 1 ul
Signal Phase : Rxi-1ms
Signal Info : 20M x 0.18mm x 0.18um

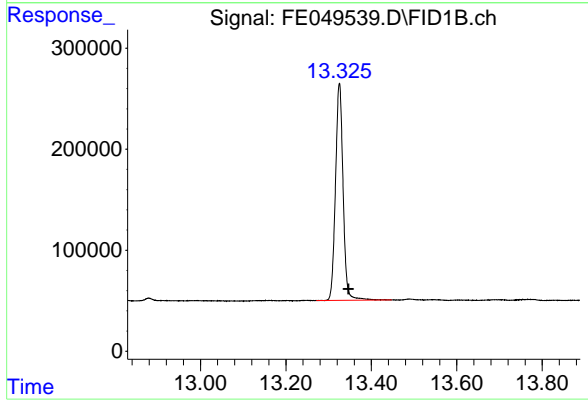




#9 ortho-Terphenyl (SURR)

R.T.: 0.000 min
Exp R.T.: 11.911 min
Response: 0
Conc: N.D.

Instrument : FID_E
ClientSampleId : MUL06



#12 1-chlorooctadecane (SURR)

R.T.: 13.325 min
Delta R.T.: -0.021 min
Response: 2650076
Conc: 22.68 ug/ml