

Data Path : Z:\pestpcbsrv\HPCHEM1\FID_E\Data\FE081023AL\
 Data File : FE043886.D
 Signal(s) : FID1B.ch
 Acq On : 11 Aug 2023 09:31
 Operator : YP\AJ
 Sample : 03955-18
 Misc :
 ALS Vial : 42 Sample Multiplier: 1

Instrument :
 FID_E
ClientSampleId :
 WC-27-EPH-2

Integration File: autoint1.e
 Quant Time: Aug 11 15:11:47 2023
 Quant Method : Z:\pestpcbsrv\HPCHEM1\FID_E\methods\Aliphatic EPH 080323.M
 Quant Title : GC Extractables
 QLast Update : Wed Aug 02 09:56:52 2023
 Response via : Initial Calibration
 Integrator: ChemStation

Volume Inj. : 1 ul
 Signal Phase : Rxi-1ms
 Signal Info : 20M x 0.18mm x 0.18um

Compound	R.T.	Response	Conc Units

System Monitoring Compounds			
9) S ortho-Terphenyl (SURR)	11.941	4296066	20.847 ug/ml
Spiked Amount	50.000	Recovery	= 41.69%
12) S 1-chlorooctadecane (S...	13.380	3359361	21.528 ug/ml
Spiked Amount	50.000	Recovery	= 43.06%

Target Compounds

(f)=RT Delta > 1/2 Window

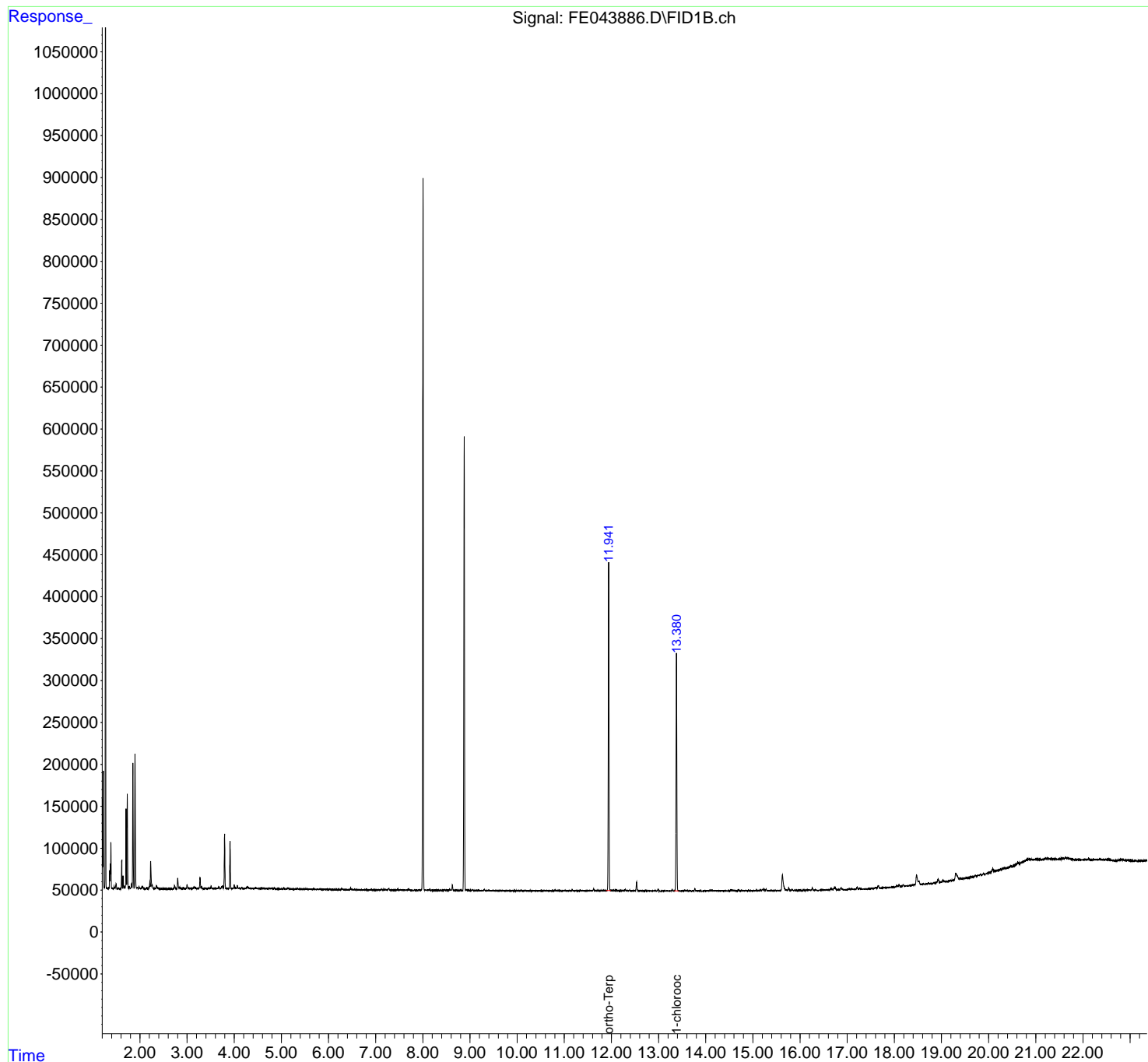
(m)=manual int.

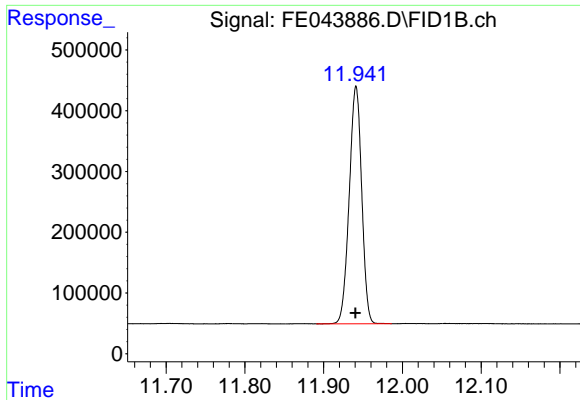
Data Path : Z:\pestpcbsrv\HPCHEM1\FID_E\Data\FE081023AL\
 Data File : FE043886.D
 Signal(s) : FID1B.ch
 Acq On : 11 Aug 2023 09:31
 Operator : YP\AJ
 Sample : 03955-18
 Misc :
 ALS Vial : 42 Sample Multiplier: 1

Instrument :
 FID_E
 ClientSampleId :
 WC-27-EPH-2

Integration File: autoint1.e
 Quant Time: Aug 11 15:11:47 2023
 Quant Method : Z:\pestpcbsrv\HPCHEM1\FID_E\methods\Aliphatic EPH 080323.M
 Quant Title : GC Extractables
 QLast Update : Wed Aug 02 09:56:52 2023
 Response via : Initial Calibration
 Integrator: ChemStation

Volume Inj. : 1 ul
 Signal Phase : Rxi-1ms
 Signal Info : 20M x 0.18mm x 0.18um

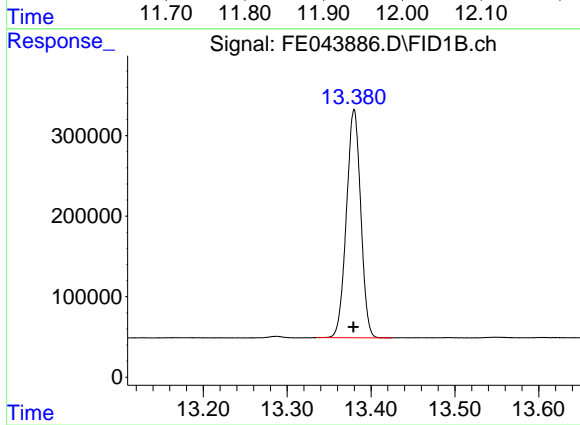




#9 ortho-Terphenyl (SURR)

R.T.: 11.941 min
Delta R.T.: 0.000 min
Response: 4296066
Conc: 20.85 ug/ml

Instrument :
FID_E
ClientSampleId :
WC-27-EPH-2



#12 1-chlorooctadecane (SURR)

R.T.: 13.380 min
Delta R.T.: 0.000 min
Response: 3359361
Conc: 21.53 ug/ml