

Data Path : Z:\pestpcbsrv\HPCHEM1\FID_E\Data\FE081125AL\
 Data File : FE055222.D
 Signal(s) : FID1B.ch
 Acq On : 11 Aug 2025 08:29
 Operator : YP\AJ
 Sample : MECL2
 Misc :
 ALS Vial : 1 Sample Multiplier: 1

Instrument :
 FID_E
 ClientSampleId :
 MECL2

Integration File: autoint1.e
 Quant Time: Aug 12 01:19:52 2025
 Quant Method : Z:\pestpcbsrv\HPCHEM1\FID_E\methods\Aliphatic EPH 080125.M
 Quant Title : GC Extractables
 QLast Update : Fri Aug 01 13:47:09 2025
 Response via : Initial Calibration
 Integrator: ChemStation

Volume Inj. : 1 ul
 Signal Phase : Rxi-1ms
 Signal Info : 20M x 0.18mm x 0.18um

Compound	R.T.	Response	Conc Units

System Monitoring Compounds			
Target Compounds			

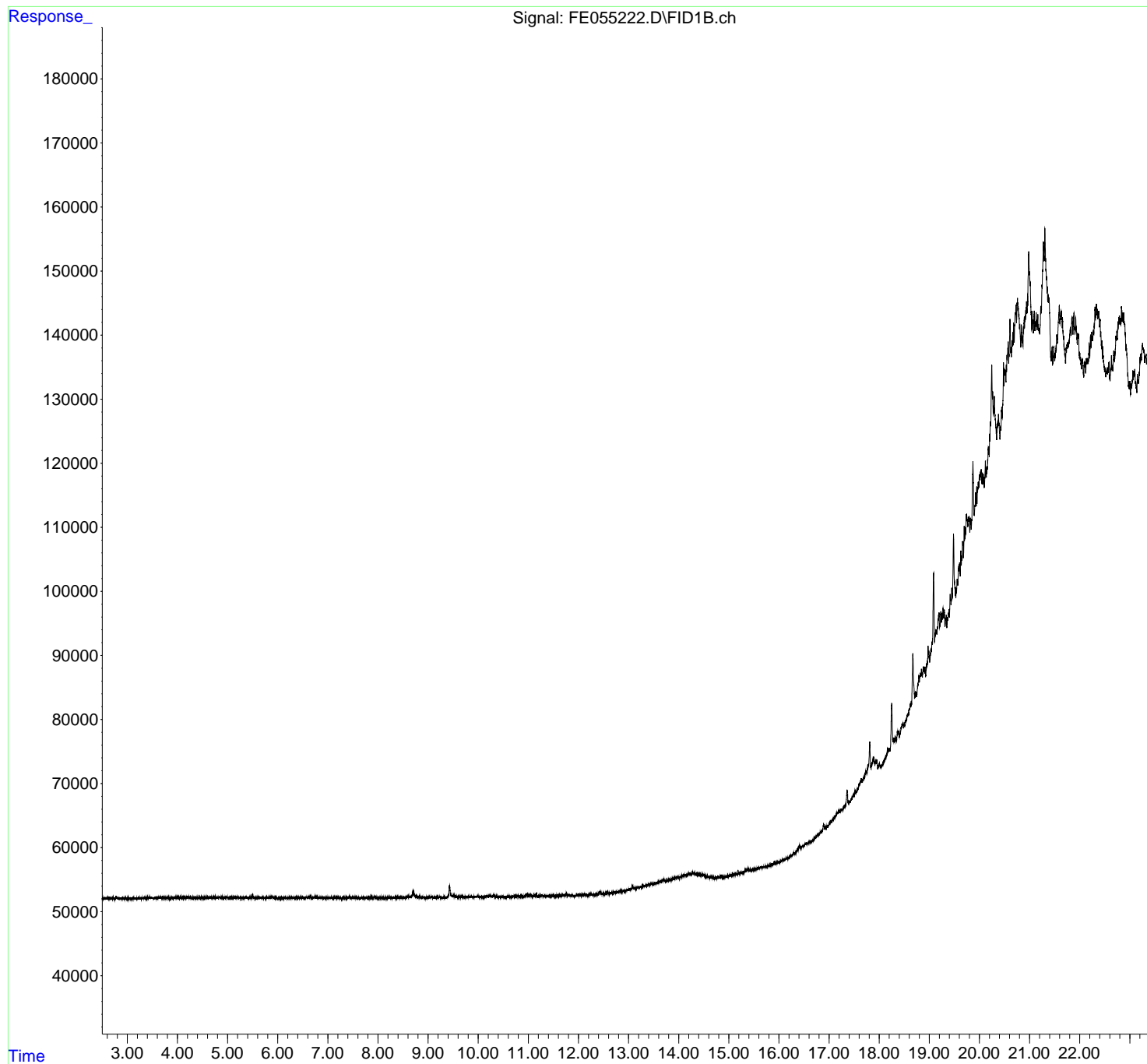
(f)=RT Delta > 1/2 Window (m)=manual int.

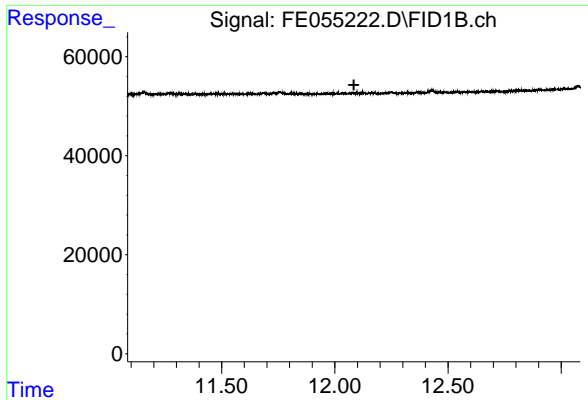
Data Path : Z:\pestpcbsrv\HPCHEM1\FID_E\Data\FE081125AL\
Data File : FE055222.D
Signal(s) : FID1B.ch
Acq On : 11 Aug 2025 08:29
Operator : YP\AJ
Sample : MECL2
Misc :
ALS Vial : 1 Sample Multiplier: 1

Instrument :
FID_E
ClientSampleId :
MECL2

Integration File: autoint1.e
Quant Time: Aug 12 01:19:52 2025
Quant Method : Z:\pestpcbsrv\HPCHEM1\FID_E\methods\Aliphatic EPH 080125.M
Quant Title : GC Extractables
QLast Update : Fri Aug 01 13:47:09 2025
Response via : Initial Calibration
Integrator: ChemStation

Volume Inj. : 1 ul
Signal Phase : Rxi-1ms
Signal Info : 20M x 0.18mm x 0.18um

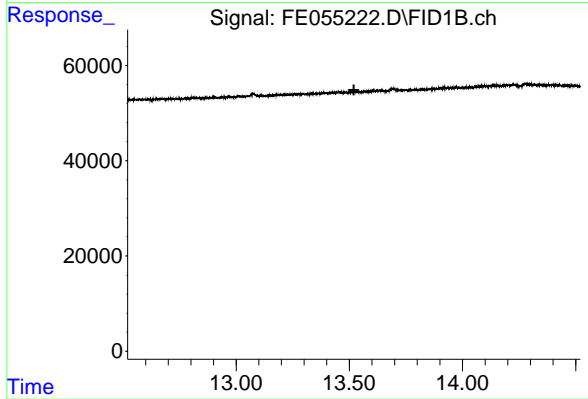




#9 ortho-Terphenyl (SURR)

R.T.: 0.000 min
Exp R.T. : 12.084 min
Response: 0
Conc: N.D.

Instrument :
FID_E
ClientSampleId :
MECL2



#12 1-chlorooctadecane (SURR)

R.T.: 0.000 min
Exp R.T. : 13.520 min
Response: 0
Conc: N.D.