

Data Path : Z:\pestpcbsrv\HPCHEM1\FID_E\Data\FE081125AL\
 Data File : FE055234.D
 Signal(s) : FID1B.ch
 Acq On : 11 Aug 2025 17:56
 Operator : YP\AJ
 Sample : Q2809-01
 Misc :
 ALS Vial : 16 Sample Multiplier: 1

Instrument :
 FID_E
ClientSampleId :
 OR-03-08082025

Manual Integrations
APPROVED

Reviewed By :Yogesh Patel 08/12/2025
 Supervised By :mohammad ahmed 08/13/2025

Integration File: autoint1.e
 Quant Time: Aug 12 01:24:11 2025
 Quant Method : Z:\pestpcbsrv\HPCHEM1\FID_E\methods\Aliphatic EPH 080125.M
 Quant Title : GC Extractables
 QLast Update : Fri Aug 01 13:47:09 2025
 Response via : Initial Calibration
 Integrator: ChemStation

Volume Inj. : 1 ul
 Signal Phase : Rxi-1ms
 Signal Info : 20M x 0.18mm x 0.18um

Compound	R.T.	Response	Conc Units

System Monitoring Compounds			
9) S ortho-Terphenyl (SURR)	12.088	5331449	37.334 ug/ml
Spiked Amount	50.000	Recovery	= 74.67%
12) S 1-chlorooctadecane (S...	13.525	4652700	43.271 ug/mlm
Spiked Amount	50.000	Recovery	= 86.54%

Target Compounds

(f)=RT Delta > 1/2 Window

(m)=manual int.

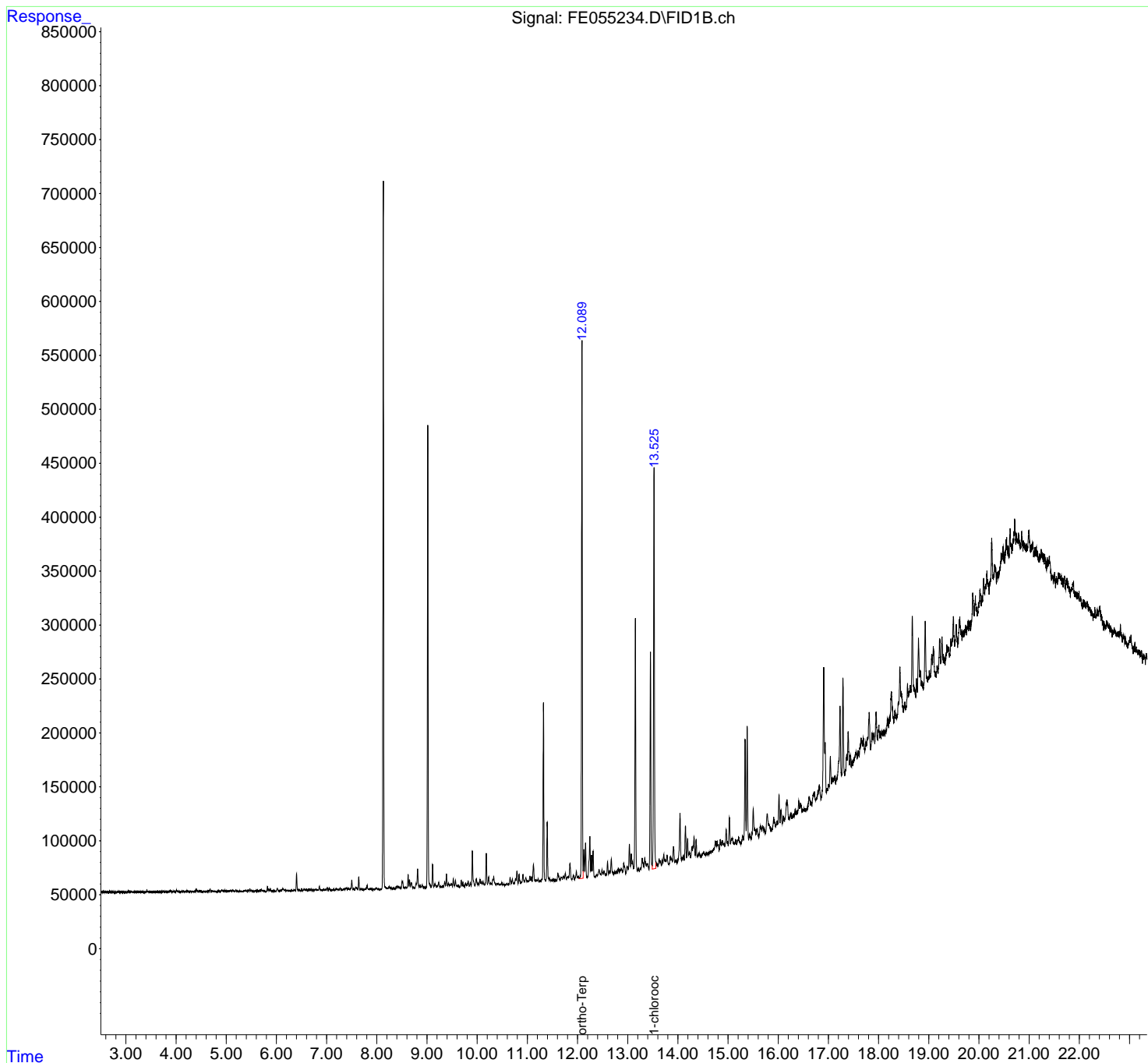
Data Path : Z:\pestpcbsrv\HPCHEM1\FID_E\Data\FE081125AL\
Data File : FE055234.D
Signal(s) : FID1B.ch
Acq On : 11 Aug 2025 17:56
Operator : YP\AJ
Sample : Q2809-01
Misc :
ALS Vial : 16 Sample Multiplier: 1

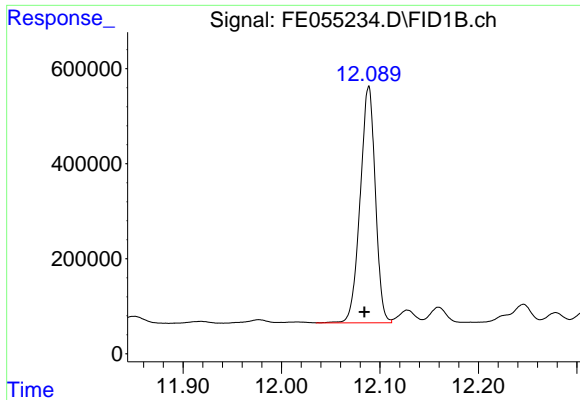
Instrument :
FID_E
ClientSampleId :
OR-03-08082025

Manual Integrations
APPROVED
Reviewed By :Yogesh Patel 08/12/2025
Supervised By :mohammad ahmed 08/13/2025

Integration File: autoint1.e
Quant Time: Aug 12 01:24:11 2025
Quant Method : Z:\pestpcbsrv\HPCHEM1\FID_E\methods\Aliphatic EPH 080125.M
Quant Title : GC Extractables
QLast Update : Fri Aug 01 13:47:09 2025
Response via : Initial Calibration
Integrator: ChemStation

Volume Inj. : 1 ul
Signal Phase : Rxi-1ms
Signal Info : 20M x 0.18mm x 0.18um





#9 ortho-Terphenyl (SURR)

R.T.: 12.088 min
 Delta R.T.: 0.004 min
 Response: 5331449
 Conc: 37.33 ug/ml

Instrument :

FID_E

ClientSampleId :

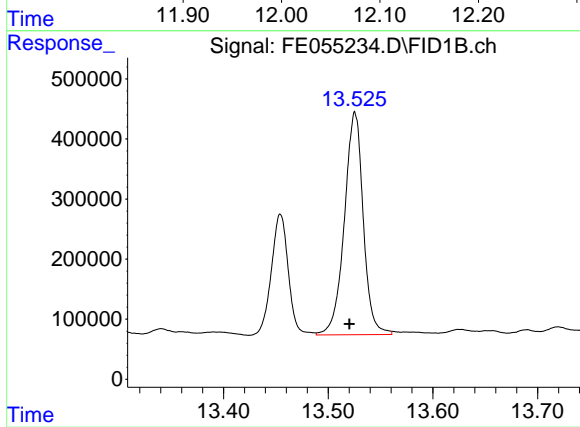
OR-03-08082025

Manual Integrations

APPROVED

Reviewed By :Yogesh Patel 08/12/2025

Supervised By :mohammad ahmed 08/13/2025



#12 1-chlorooctadecane (SURR)

R.T.: 13.525 min
 Delta R.T.: 0.005 min
 Response: 4652700
 Conc: 43.27 ug/ml m