

Data Path : Z:\pestpcbsrv\HPCHEM1\FID\_E\Data\FE081125AL\  
 Data File : FE055240.D  
 Signal(s) : FID1B.ch  
 Acq On : 11 Aug 2025 21:30  
 Operator : YP\AJ  
 Sample : 20 PPM ALIPHATIC HC STD  
 Misc :  
 ALS Vial : 2 Sample Multiplier: 1

Instrument :  
 FID\_E  
 ClientSampleId :  
 20 PPM ALIPHATIC HC STD

Manual Integrations  
 APPROVED

Reviewed By :Yogesh Patel 08/12/2025  
 Supervised By :mohammad ahmed 08/13/2025

Integration File: autoint1.e  
 Quant Time: Aug 12 01:26:29 2025  
 Quant Method : Z:\pestpcbsrv\HPCHEM1\FID\_E\methods\Aliphatic EPH 080125.M  
 Quant Title : GC Extractables  
 QLast Update : Fri Aug 01 13:47:09 2025  
 Response via : Initial Calibration  
 Integrator: ChemStation

Volume Inj. : 1 ul  
 Signal Phase : Rxi-1ms  
 Signal Info : 20M x 0.18mm x 0.18um

Compound	R.T.	Response	Conc Units
-----			
System Monitoring Compounds			
9) S ortho-Terphenyl (SURR)	12.090	2587107	18.117 ug/ml
Spiked Amount	50.000	Recovery	= 36.23%
12) S 1-chlorooctadecane (S...	13.526	1975830	18.376 ug/ml
Spiked Amount	50.000	Recovery	= 36.75%
Target Compounds			
1) T n-Nonane (C9)	3.423	2025203	17.646 ug/ml
2) T n-Decane (C10)	4.682	2135102	18.328 ug/ml
3) T A~Naphthalene (C11.7)	6.404	2446323	18.225 ug/ml
4) T n-Dodecane (C12)	6.858	2217169	18.619 ug/ml
5) T A~2-methylnaphthalene...	7.505	2400038	18.408 ug/ml
6) T n-Tetradecane (C14)	8.696	2282277	18.614 ug/ml
7) T n-Hexadecane (C16)	10.312	2381205	18.626 ug/ml
8) T n-Octadecane (C18)	11.762	2417931	18.532 ug/ml
10) T n-Eicosane (C20)	13.077	2325175	18.531 ug/ml
11) T n-Heneicosane (C21)	13.692	2253975	18.285 ug/ml
13) T n-Docosane (C22)	14.280	2318353	18.984 ug/ml
14) T n-Tetracosane (C24)	15.387	2471718	20.321 ug/ml
15) T n-Hexacosane (C26)	16.412	2546342	21.282 ug/ml
16) T n-Octacosane (C28)	17.364	2607963	21.985 ug/ml
17) T n-Tricontane (C30)	18.254	2832727	23.021 ug/mlm
18) T n-Dotriacontane (C32)	19.088	2892536	23.707 ug/ml
19) T n-Tetratriacontane (C34)	19.874	2579967	22.066 ug/mlm
20) T n-Hexatriacontane (C36)	20.616	2330697	21.324 ug/ml
21) T n-Octatriacontane (C38)	21.398	2535283	23.459 ug/ml
22) T n-Tetracontane (C40)	22.392	2066777	19.764 ug/ml
-----			

(f)=RT Delta > 1/2 Window

(m)=manual int.

Data Path : Z:\pestpcbsrv\HPCHEM1\FID\_E\Data\FE081125AL\  
 Data File : FE055240.D  
 Signal(s) : FID1B.ch  
 Acq On : 11 Aug 2025 21:30  
 Operator : YP\AJ  
 Sample : 20 PPM ALIPHATIC HC STD  
 Misc :  
 ALS Vial : 2 Sample Multiplier: 1

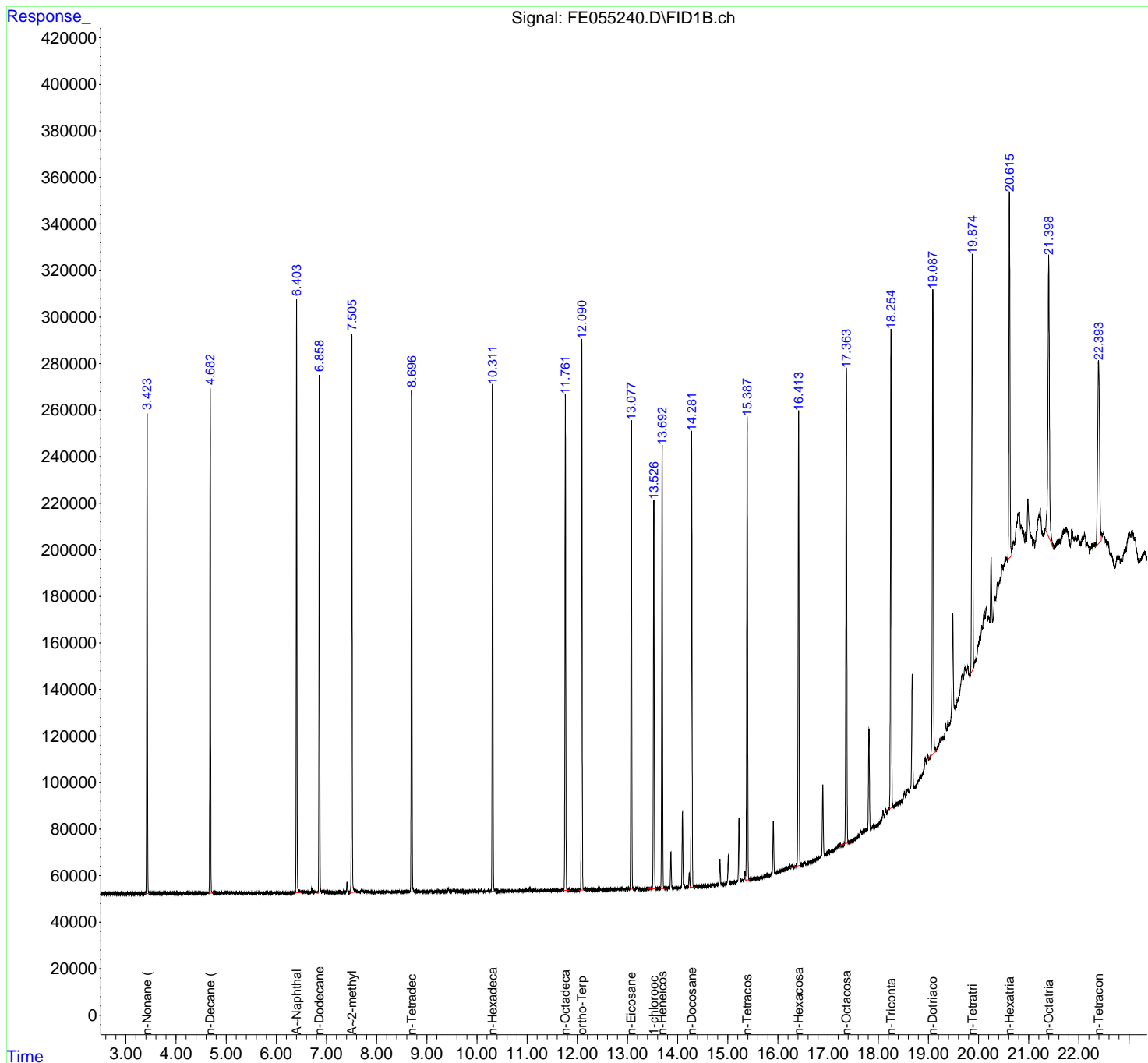
**Instrument :**  
 FID\_E  
**ClientSampleId :**  
 20 PPM ALIPHATIC HC STD

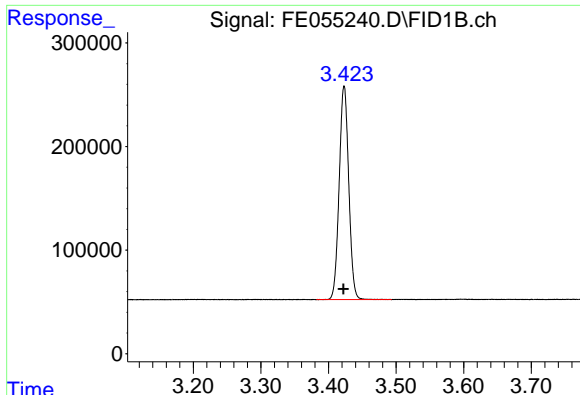
**Manual Integrations  
 APPROVED**

Reviewed By :Yogesh Patel 08/12/2025  
 Supervised By :mohammad ahmed 08/13/2025

Integration File: autoint1.e  
 Quant Time: Aug 12 01:26:29 2025  
 Quant Method : Z:\pestpcbsrv\HPCHEM1\FID\_E\methods\Aliphatic EPH 080125.M  
 Quant Title : GC Extractables  
 QLast Update : Fri Aug 01 13:47:09 2025  
 Response via : Initial Calibration  
 Integrator: ChemStation

Volume Inj. : 1 ul  
 Signal Phase : Rxi-1ms  
 Signal Info : 20M x 0.18mm x 0.18um





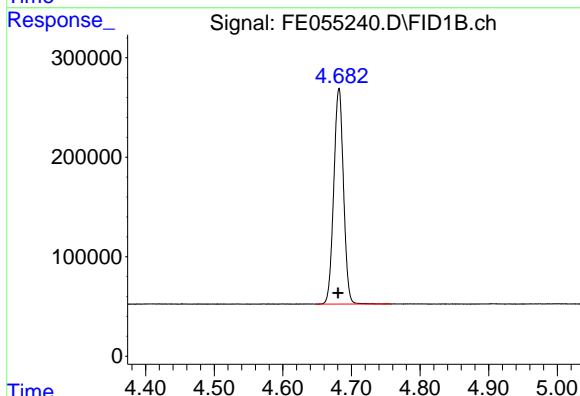
#1 n-Nonane (C9)

R.T.: 3.423 min  
 Delta R.T.: 0.001 min  
 Response: 2025203  
 Conc: 17.65 ug/ml

Instrument : FID\_E  
 Client Sample Id : 20 PPM ALIPHATIC HC STD

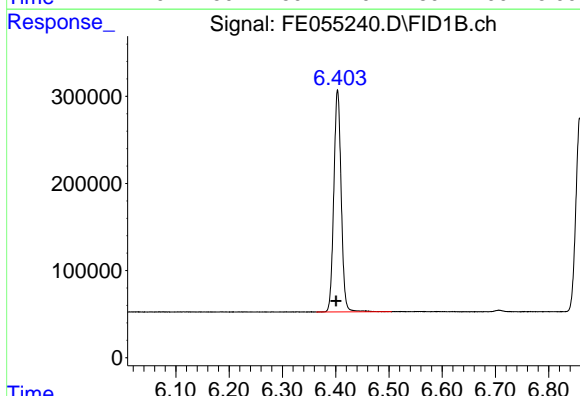
Manual Integrations  
 APPROVED

Reviewed By :Yogesh Patel 08/12/2025  
 Supervised By :mohammad ahmed 08/13/2025



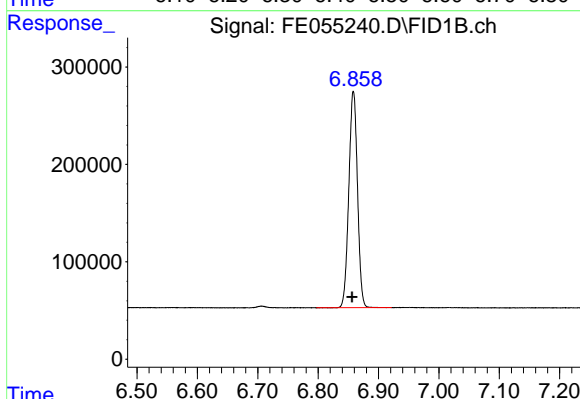
#2 n-Decane (C10)

R.T.: 4.682 min  
 Delta R.T.: 0.001 min  
 Response: 2135102  
 Conc: 18.33 ug/ml



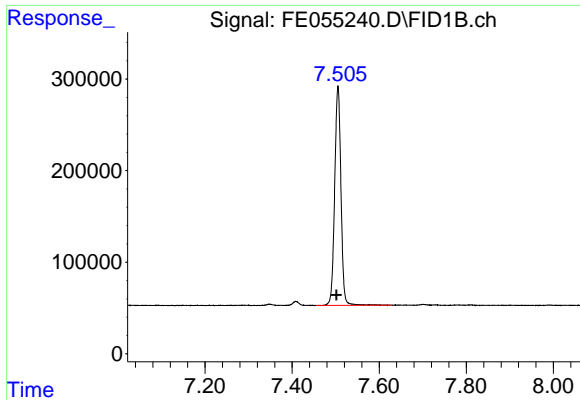
#3 A~Naphthalene (C11.7)

R.T.: 6.404 min  
 Delta R.T.: 0.003 min  
 Response: 2446323  
 Conc: 18.22 ug/ml



#4 n-Dodecane (C12)

R.T.: 6.858 min  
 Delta R.T.: 0.002 min  
 Response: 2217169  
 Conc: 18.62 ug/ml



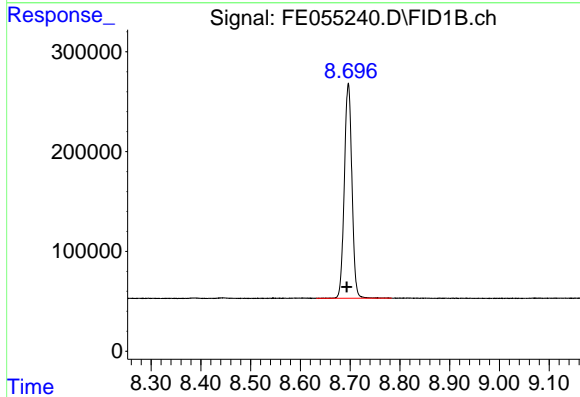
#5 A~2-methylnaphthalene (C12.89)

R.T.: 7.505 min  
 Delta R.T.: 0.004 min  
 Response: 2400038  
 Conc: 18.41 ug/ml

Instrument : FID\_E  
 ClientSampleId : 20 PPM ALIPHATIC HC STD

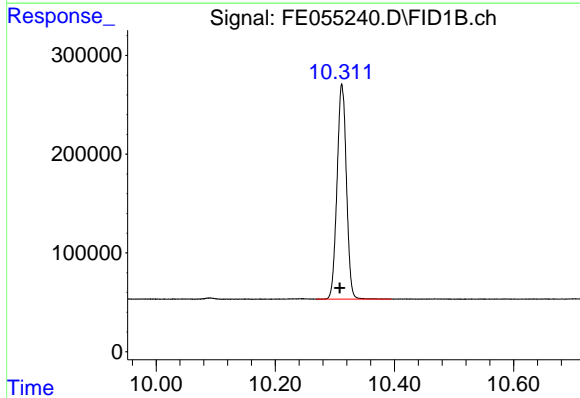
Manual Integrations  
 APPROVED

Reviewed By :Yogesh Patel 08/12/2025  
 Supervised By :mohammad ahmed 08/13/2025



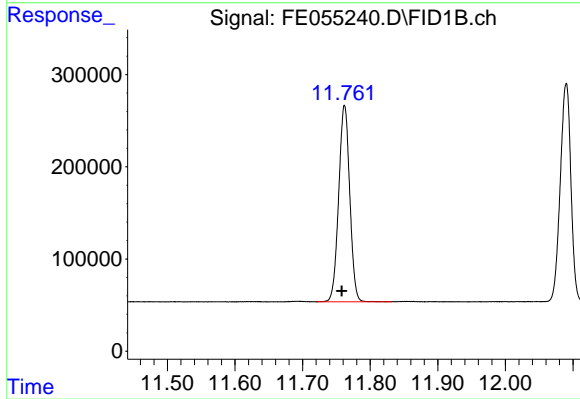
#6 n-Tetradecane (C14)

R.T.: 8.696 min  
 Delta R.T.: 0.003 min  
 Response: 2282277  
 Conc: 18.61 ug/ml



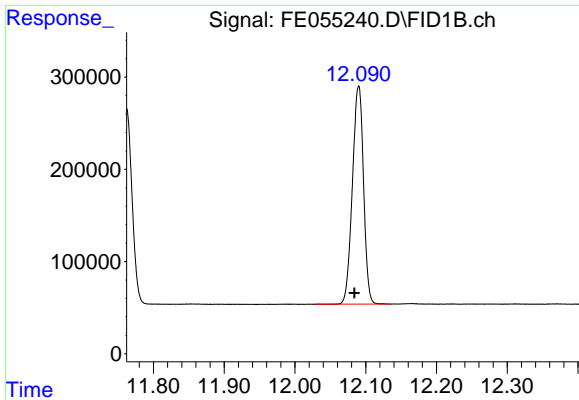
#7 n-Hexadecane (C16)

R.T.: 10.312 min  
 Delta R.T.: 0.004 min  
 Response: 2381205  
 Conc: 18.63 ug/ml



#8 n-Octadecane (C18)

R.T.: 11.762 min  
 Delta R.T.: 0.004 min  
 Response: 2417931  
 Conc: 18.53 ug/ml



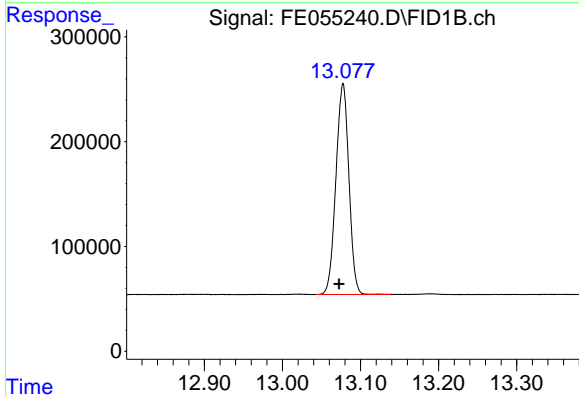
#9 ortho-Terphenyl (SURR)

R.T.: 12.090 min  
 Delta R.T.: 0.006 min  
 Response: 2587107  
 Conc: 18.12 ug/ml

Instrument : FID\_E  
 ClientSampleId : 20 PPM ALIPHATIC HC STD

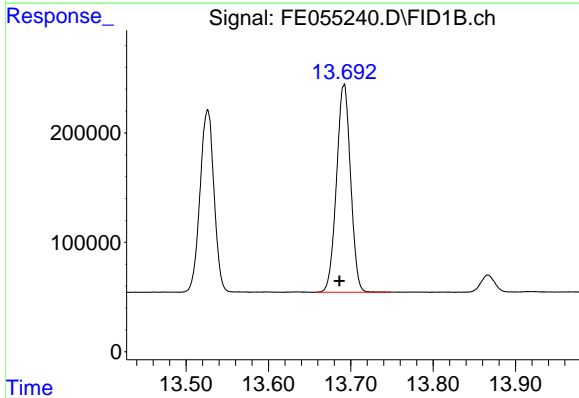
Manual Integrations  
 APPROVED

Reviewed By :Yogesh Patel 08/12/2025  
 Supervised By :mohammad ahmed 08/13/2025



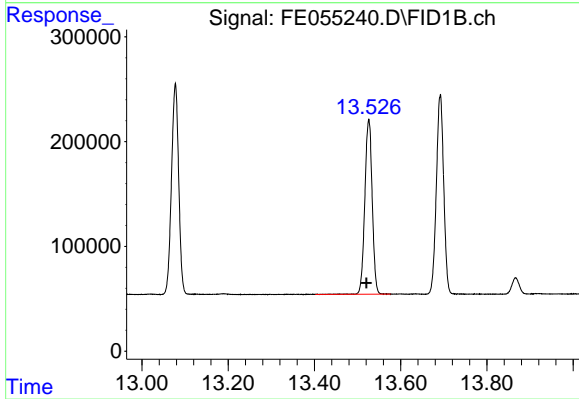
#10 n-Eicosane (C20)

R.T.: 13.077 min  
 Delta R.T.: 0.005 min  
 Response: 2325175  
 Conc: 18.53 ug/ml



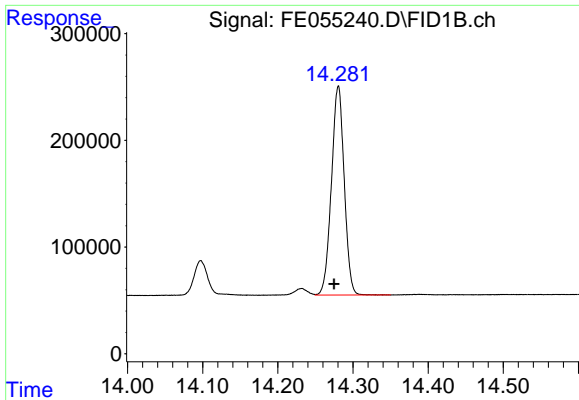
#11 n-Heneicosane (C21)

R.T.: 13.692 min  
 Delta R.T.: 0.005 min  
 Response: 2253975  
 Conc: 18.29 ug/ml



#12 1-chlorooctadecane (SURR)

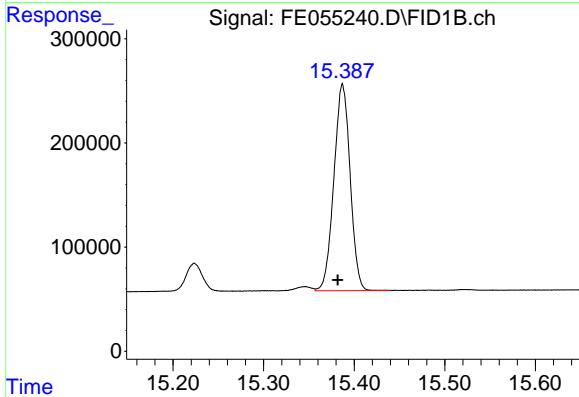
R.T.: 13.526 min  
 Delta R.T.: 0.006 min  
 Response: 1975830  
 Conc: 18.38 ug/ml



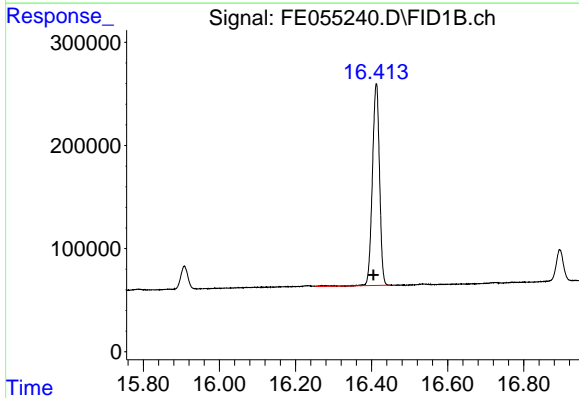
#13 n-Docosane (C22)  
 R.T.: 14.280 min  
 Delta R.T.: 0.006 min  
 Response: 2318353  
 Conc: 18.98 ug/ml

Instrument : FID\_E  
 Client Sample Id : 20 PPM ALIPHATIC HC STD

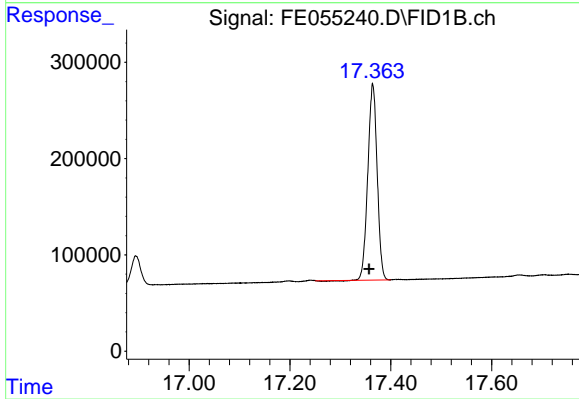
Manual Integrations  
**APPROVED**  
 Reviewed By :Yogesh Patel 08/12/2025  
 Supervised By :mohammad ahmed 08/13/2025



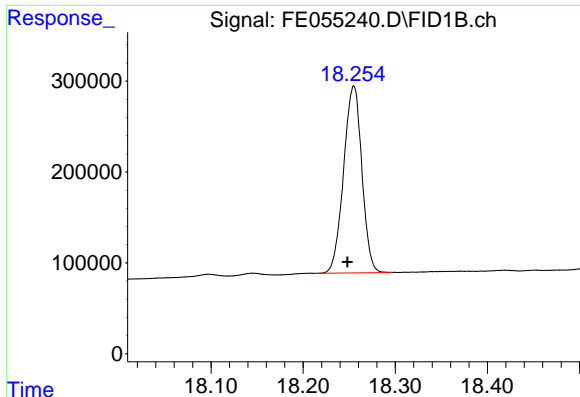
#14 n-Tetracosane (C24)  
 R.T.: 15.387 min  
 Delta R.T.: 0.005 min  
 Response: 2471718  
 Conc: 20.32 ug/ml



#15 n-Hexacosane (C26)  
 R.T.: 16.412 min  
 Delta R.T.: 0.007 min  
 Response: 2546342  
 Conc: 21.28 ug/ml



#16 n-Octacosane (C28)  
 R.T.: 17.364 min  
 Delta R.T.: 0.007 min  
 Response: 2607963  
 Conc: 21.99 ug/ml



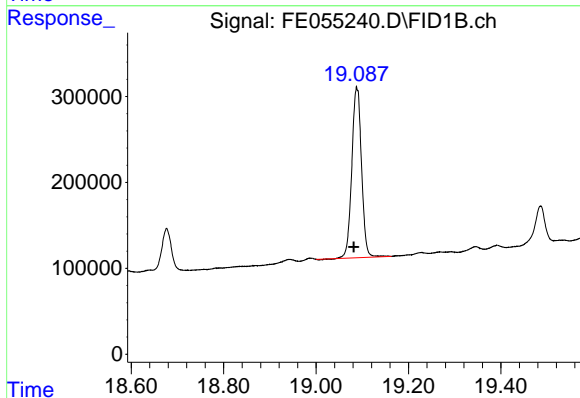
#17 n-Tricontane (C30)

R.T.: 18.254 min  
 Delta R.T.: 0.006 min  
 Response: 2832727  
 Conc: 23.02 ug/ml

Instrument : FID\_E  
 ClientSampleId : 20 PPM ALIPHATIC HC STD

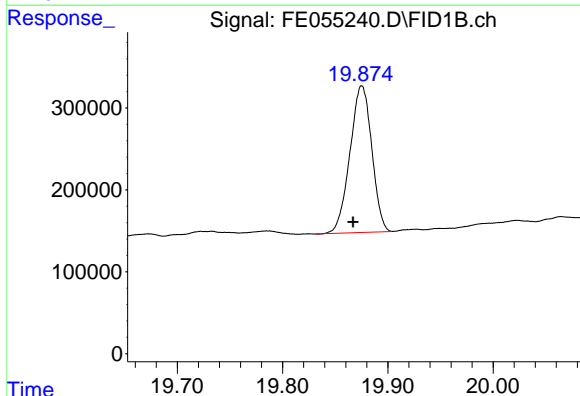
Manual Integrations  
 APPROVED

Reviewed By :Yogesh Patel 08/12/2025  
 Supervised By :mohammad ahmed 08/13/2025



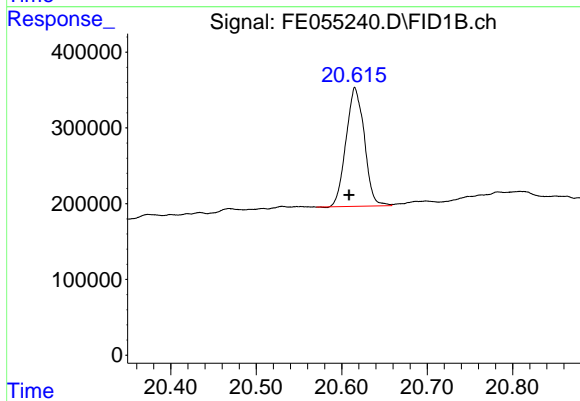
#18 n-Dotriacontane (C32)

R.T.: 19.088 min  
 Delta R.T.: 0.007 min  
 Response: 2892536  
 Conc: 23.71 ug/ml



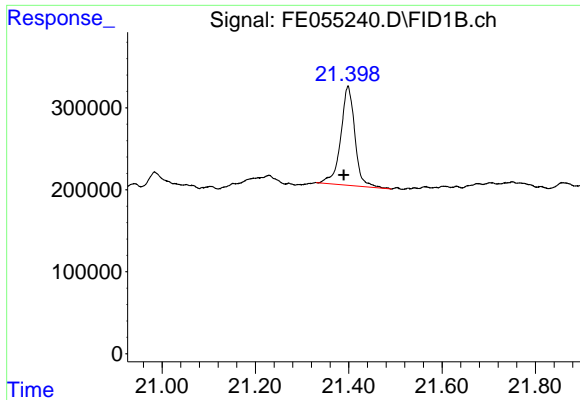
#19 n-Tetratriacontane (C34)

R.T.: 19.874 min  
 Delta R.T.: 0.007 min  
 Response: 2579967  
 Conc: 22.07 ug/ml m



#20 n-Hexatriacontane (C36)

R.T.: 20.616 min  
 Delta R.T.: 0.007 min  
 Response: 2330697  
 Conc: 21.32 ug/ml



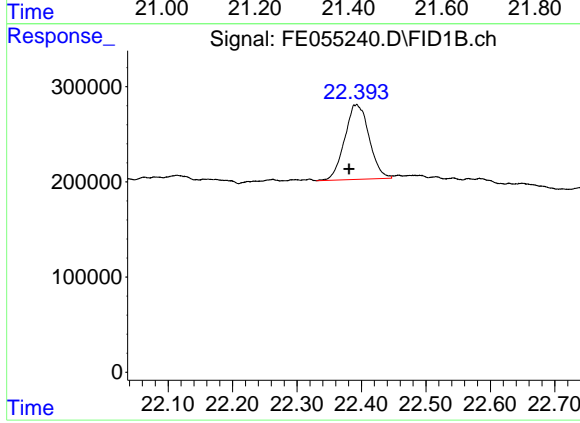
#21 n-Octatriacontane (C38)

R.T.: 21.398 min  
 Delta R.T.: 0.009 min  
 Response: 2535283  
 Conc: 23.46 ug/ml

Instrument : FID\_E  
 ClientSampleId : 20 PPM ALIPHATIC HC STD

Manual Integrations  
 APPROVED

Reviewed By :Yogesh Patel 08/12/2025  
 Supervised By :mohammad ahmed 08/13/2025



#22 n-Tetracontane (C40)

R.T.: 22.392 min  
 Delta R.T.: 0.011 min  
 Response: 2066777  
 Conc: 19.76 ug/ml