

Data Path : Z:\pestpcbsrv\HPCHEM1\FID\_E\Data\FE081224AL\  
 Data File : FE049567.D  
 Signal(s) : FID1B.ch  
 Acq On : 12 Aug 2024 17:34  
 Operator : YP\AJ  
 Sample : P3548-10  
 Misc :  
 ALS Vial : 19 Sample Multiplier: 1

Instrument :  
 FID\_E  
 ClientSampleId :

Integration File: autoint1.e  
 Quant Time: Aug 13 01:43:31 2024  
 Quant Method : Z:\pestpcbsrv\HPCHEM1\FID\_E\methods\Aliphatic EPH 071724.M  
 Quant Title : GC Extractables  
 QLast Update : Wed Jul 17 14:26:40 2024  
 Response via : Initial Calibration  
 Integrator: ChemStation

Volume Inj. : 1 ul  
 Signal Phase : Rxi-1ms  
 Signal Info : 20M x 0.18mm x 0.18um

Compound	R.T.	Response	Conc Units
-----			
System Monitoring Compounds			
9) S ortho-Terphenyl (SURR)	11.888	4229096	27.266 ug/ml
Spiked Amount	50.000	Recovery	= 54.53%
12) S 1-chlorooctadecane (S...	13.324	3004106	25.712 ug/ml
Spiked Amount	50.000	Recovery	= 51.42%
Target Compounds			
10) T n-Eicosane (C20)	12.947	99660	0.689 ug/ml
17) T n-Tricontane (C30)	18.029	8161	0.056 ug/ml
18) T n-Dotriacontane (C32)	18.861	64374	0.438 ug/ml
-----			

(f)=RT Delta > 1/2 Window

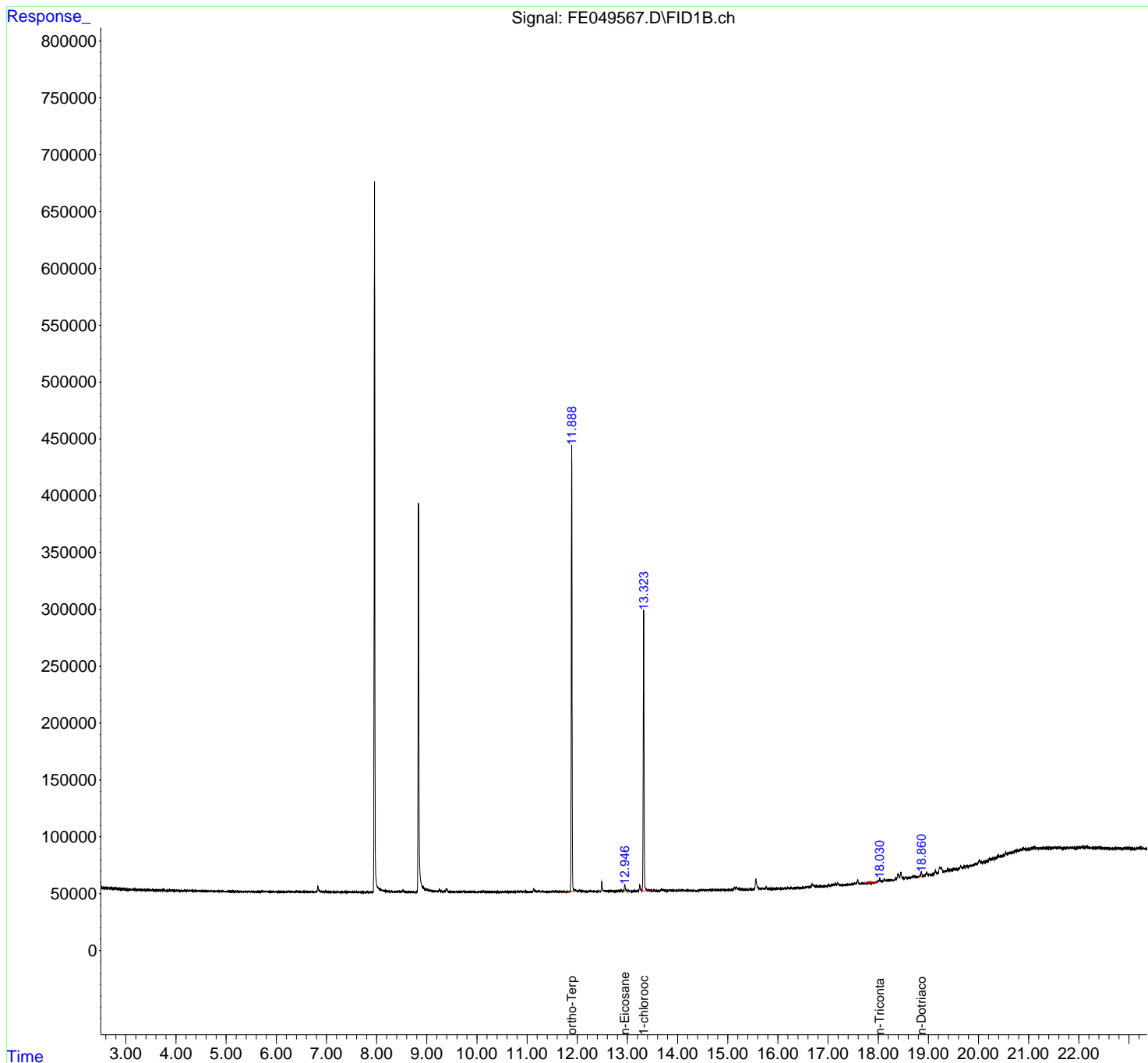
(m)=manual int.

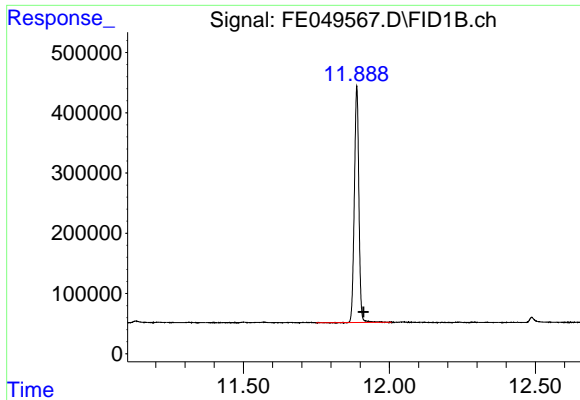
Data Path : Z:\pestpcbsrv\HPCHEM1\FID\_E\Data\FE081224AL\  
Data File : FE049567.D  
Signal(s) : FID1B.ch  
Acq On : 12 Aug 2024 17:34  
Operator : YP\AJ  
Sample : P3548-10  
Misc :  
ALS Vial : 19 Sample Multiplier: 1

Instrument :  
FID\_E  
ClientSampleId :

Integration File: autoint1.e  
Quant Time: Aug 13 01:43:31 2024  
Quant Method : Z:\pestpcbsrv\HPCHEM1\FID\_E\methods\Aliphatic EPH 071724.M  
Quant Title : GC Extractables  
QLast Update : Wed Jul 17 14:26:40 2024  
Response via : Initial Calibration  
Integrator: ChemStation

Volume Inj. : 1 ul  
Signal Phase : Rxi-1ms  
Signal Info : 20M x 0.18mm x 0.18um

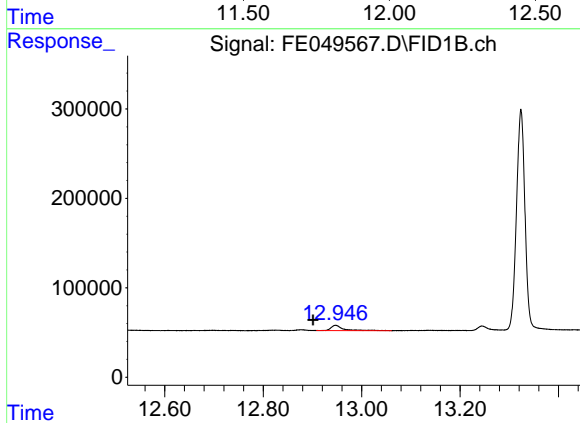




#9 ortho-Terphenyl (SURR)

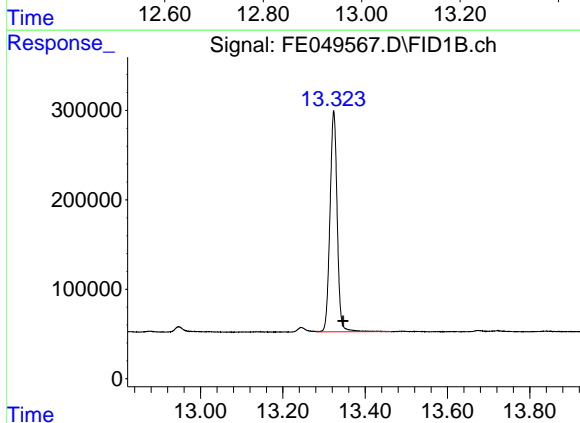
R.T.: 11.888 min  
 Delta R.T.: -0.023 min  
 Response: 4229096  
 Conc: 27.27 ug/ml

Instrument :  
 FID\_E  
 ClientSampleId :



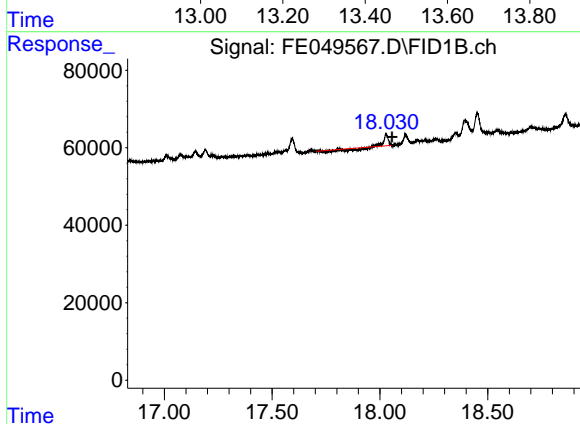
#10 n-Eicosane (C20)

R.T.: 12.947 min  
 Delta R.T.: 0.046 min  
 Response: 99660  
 Conc: 0.69 ug/ml



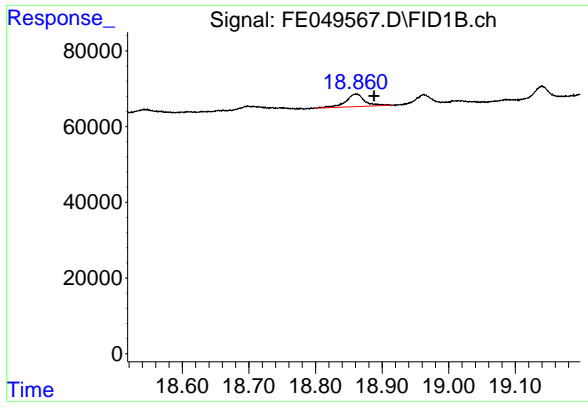
#12 1-chlorooctadecane (SURR)

R.T.: 13.324 min  
 Delta R.T.: -0.023 min  
 Response: 3004106  
 Conc: 25.71 ug/ml



#17 n-Tricontane (C30)

R.T.: 18.029 min  
 Delta R.T.: -0.028 min  
 Response: 8161  
 Conc: 0.06 ug/ml



#18 n-Dotriacontane (C32)

R.T.: 18.861 min  
Delta R.T.: -0.027 min  
Response: 64374  
Conc: 0.44 ug/ml

Instrument :  
FID\_E  
ClientSampleId :