

Data Path : Z:\pestpcbsrv\HPCHEM1\FID_E\Data\FE081318\
 Data File : FE028545.D
 Signal(s) : FID1B.CH
 Acq On : 13 Aug 2018 13:52
 Operator : AJ\SJ
 Sample : J4447-19
 Misc :
 ALS Vial : 10 Sample Multiplier: 1

Integration File: autoint1.e
 Quant Time: Aug 14 03:40:33 2018
 Quant Method : Z:\pestpcbsrv\HPCHEM1\FID_E\methods\C44-FE071918.M
 Quant Title :
 QLast Update : Fri Jul 20 01:13:49 2018
 Response via : Initial Calibration
 Integrator: ChemStation 6890 Scale Mode: Large solvent peaks clipped

Volume Inj. : 1 ul
 Signal Phase : Rxi-lms
 Signal Info : 20m x 0.18mm x 0.18um

Compound	R.T.	Response	Conc Units

System Monitoring Compounds			
13) S TETRACOSANE-d50 (SURR...	14.975	1815312	10.655 ug/ml
Target Compounds			
6) N-TETRADECANE	8.560	440656	3.804 ug/ml
11) N-OCTACOSANE	17.209	244374	2.006 ug/ml
12) N-DOTRIACONTANE	18.881	202551	1.771 ug/ml

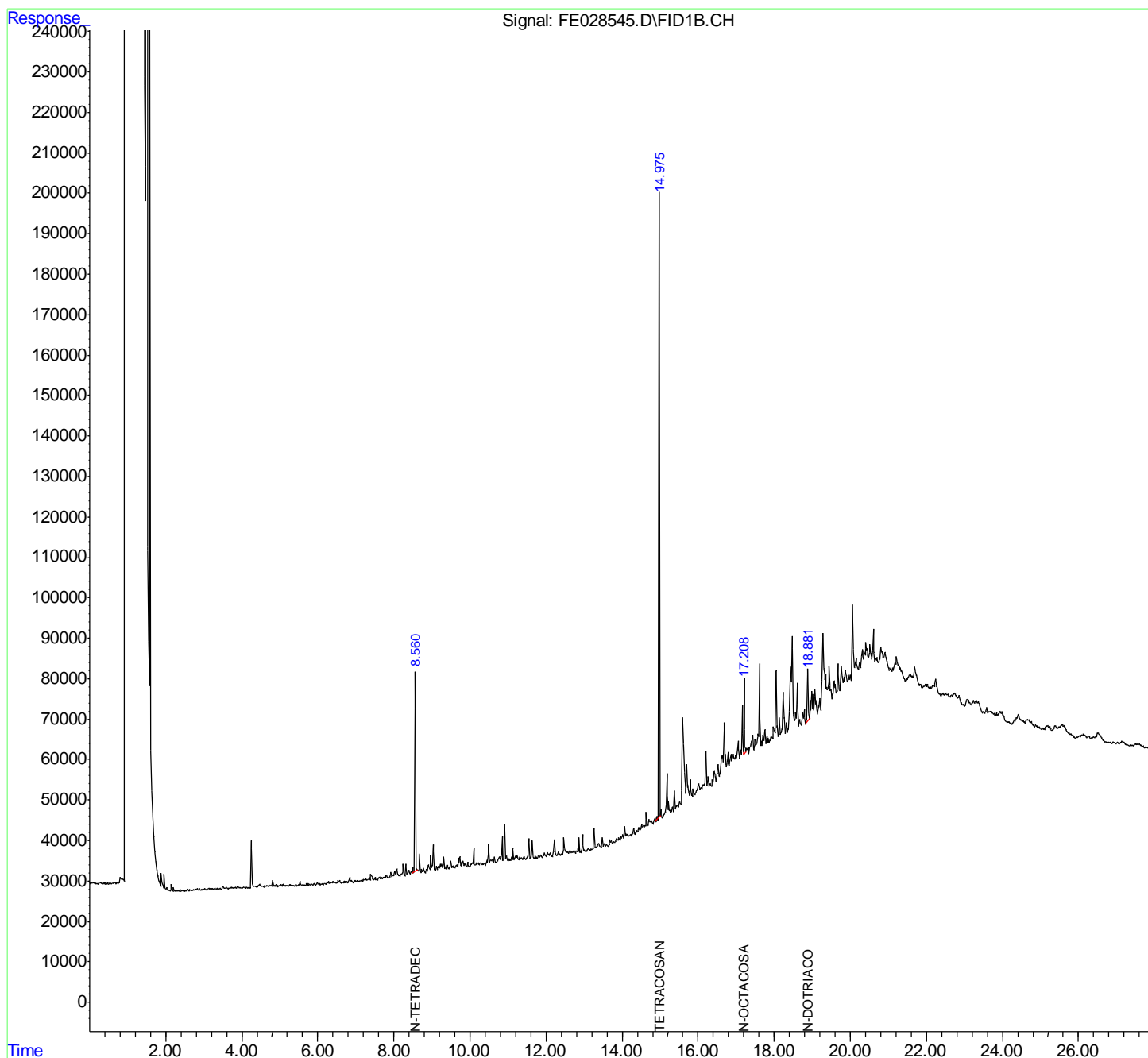
(f)=RT Delta > 1/2 Window

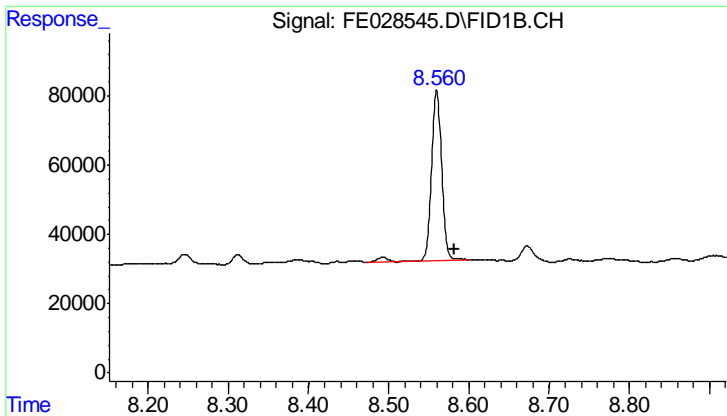
(m)=manual int.

Data Path : Z:\pestpcbsrv\HPCHEM1\FID_E\Data\FE081318\
Data File : FE028545.D
Signal(s) : FID1B.CH
Acq On : 13 Aug 2018 13:52
Operator : AJ\SJ
Sample : J4447-19
Misc :
ALS Vial : 10 Sample Multiplier: 1

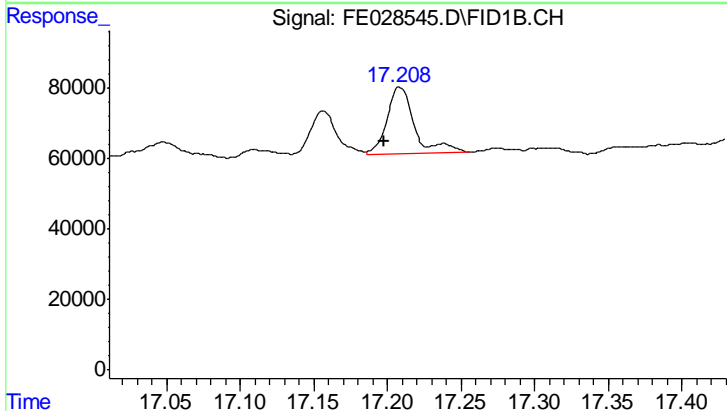
Integration File: autoint1.e
Quant Time: Aug 14 03:40:33 2018
Quant Method : Z:\pestpcbsrv\HPCHEM1\FID_E\methods\C44-FE071918.M
Quant Title :
QLast Update : Fri Jul 20 01:13:49 2018
Response via : Initial Calibration
Integrator: ChemStation 6890 Scale Mode: Large solvent peaks clipped

Volume Inj. : 1 ul
Signal Phase : Rxi-lms
Signal Info : 20m x 0.18mm x 0.18um

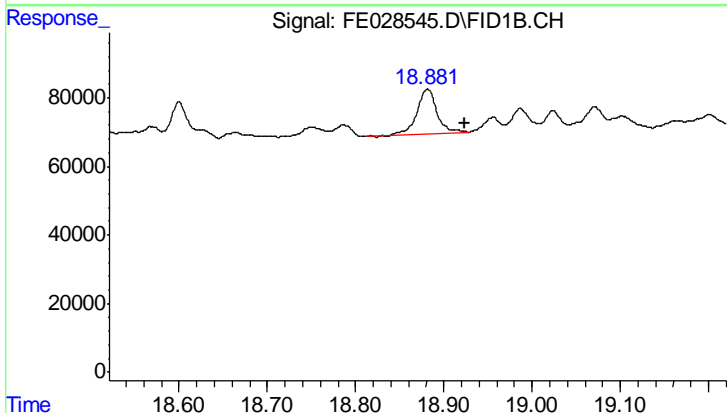




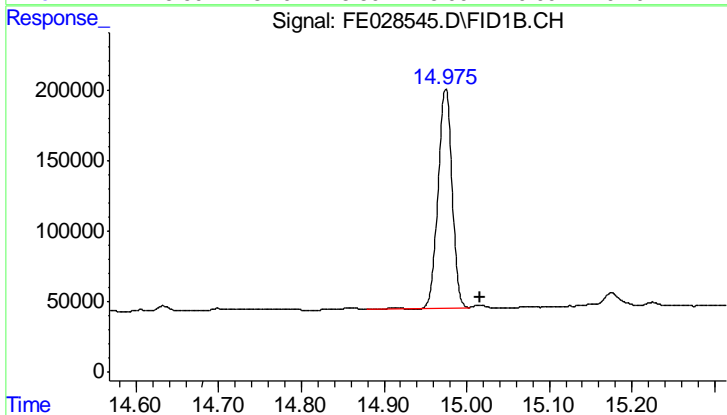
#6 N-TETRADECANE
R.T.: 8.560 min
Delta R.T.: -0.023 min
Response: 440656
Conc: 3.80 ug/ml



#11 N-OCTACOSANE
R.T.: 17.209 min
Delta R.T.: 0.011 min
Response: 244374
Conc: 2.01 ug/ml



#12 N-DOTRIACONTANE
R.T.: 18.881 min
Delta R.T.: -0.042 min
Response: 202551
Conc: 1.77 ug/ml



#13 TETRACOSANE-d50 (SURROGATE)
R.T.: 14.975 min
Delta R.T.: -0.042 min
Response: 1815312
Conc: 10.65 ug/ml