

Data Path : Z:\pestpcbsrv\HPCHEM1\FID\_E\Data\FE081425AL\  
 Data File : FE055299.D  
 Signal(s) : FID1B.ch  
 Acq On : 14 Aug 2025 11:35  
 Operator : YP\AJ  
 Sample : 20 PPM ALIPHATIC HC STD  
 Misc :  
 ALS Vial : 2 Sample Multiplier: 1

Instrument :  
 FID\_E  
 ClientSampleId :  
 20 PPM ALIPHATIC HC STD

Integration File: autoint1.e  
 Quant Time: Aug 14 18:03:20 2025  
 Quant Method : Z:\pestpcbsrv\HPCHEM1\FID\_E\methods\Aliphatic EPH 080125.M  
 Quant Title : GC Extractables  
 QLast Update : Fri Aug 01 13:47:09 2025  
 Response via : Initial Calibration  
 Integrator: ChemStation

Volume Inj. : 1 ul  
 Signal Phase : Rxi-1ms  
 Signal Info : 20M x 0.18mm x 0.18um

Compound	R.T.	Response	Conc Units
-----			
System Monitoring Compounds			
9) S ortho-Terphenyl (SURR)	12.089	2561934	17.940 ug/ml
Spiked Amount	50.000	Recovery	= 35.88%
12) S 1-chlorooctadecane (S...	13.526	1935498	18.001 ug/ml
Spiked Amount	50.000	Recovery	= 36.00%
Target Compounds			
1) T n-Nonane (C9)	3.425	1932582	16.839 ug/ml
2) T n-Decane (C10)	4.683	2035673	17.474 ug/ml
3) T A~Naphthalene (C11.7)	6.403	2307393	17.190 ug/ml
4) T n-Dodecane (C12)	6.859	2100798	17.642 ug/ml
5) T A~2-methylnaphthalene...	7.505	2259595	17.330 ug/ml
6) T n-Tetradecane (C14)	8.697	2132155	17.390 ug/ml
7) T n-Hexadecane (C16)	10.313	2259031	17.670 ug/ml
8) T n-Octadecane (C18)	11.762	2364886	18.125 ug/ml
10) T n-Eicosane (C20)	13.078	2316400	18.461 ug/ml
11) T n-Heneicosane (C21)	13.692	2259825	18.333 ug/ml
13) T n-Docosane (C22)	14.281	2320873	19.005 ug/ml
14) T n-Tetracosane (C24)	15.388	2486793	20.445 ug/ml
15) T n-Hexacosane (C26)	16.412	2545080	21.272 ug/ml
16) T n-Octacosane (C28)	17.365	2681729	22.607 ug/ml
17) T n-Tricontane (C30)	18.255	2951913	23.990 ug/ml
18) T n-Dotriacontane (C32)	19.089	3001345	24.599 ug/ml
19) T n-Tetratriacontane (C34)	19.875	2678146	22.906 ug/ml
20) T n-Hexatriacontane (C36)	20.617	2332482	21.340 ug/ml
21) T n-Octatriacontane (C38)	21.400	2133720	19.744 ug/ml
22) T n-Tetracontane (C40)	22.392	2043139	19.538 ug/ml
-----			

(f)=RT Delta > 1/2 Window

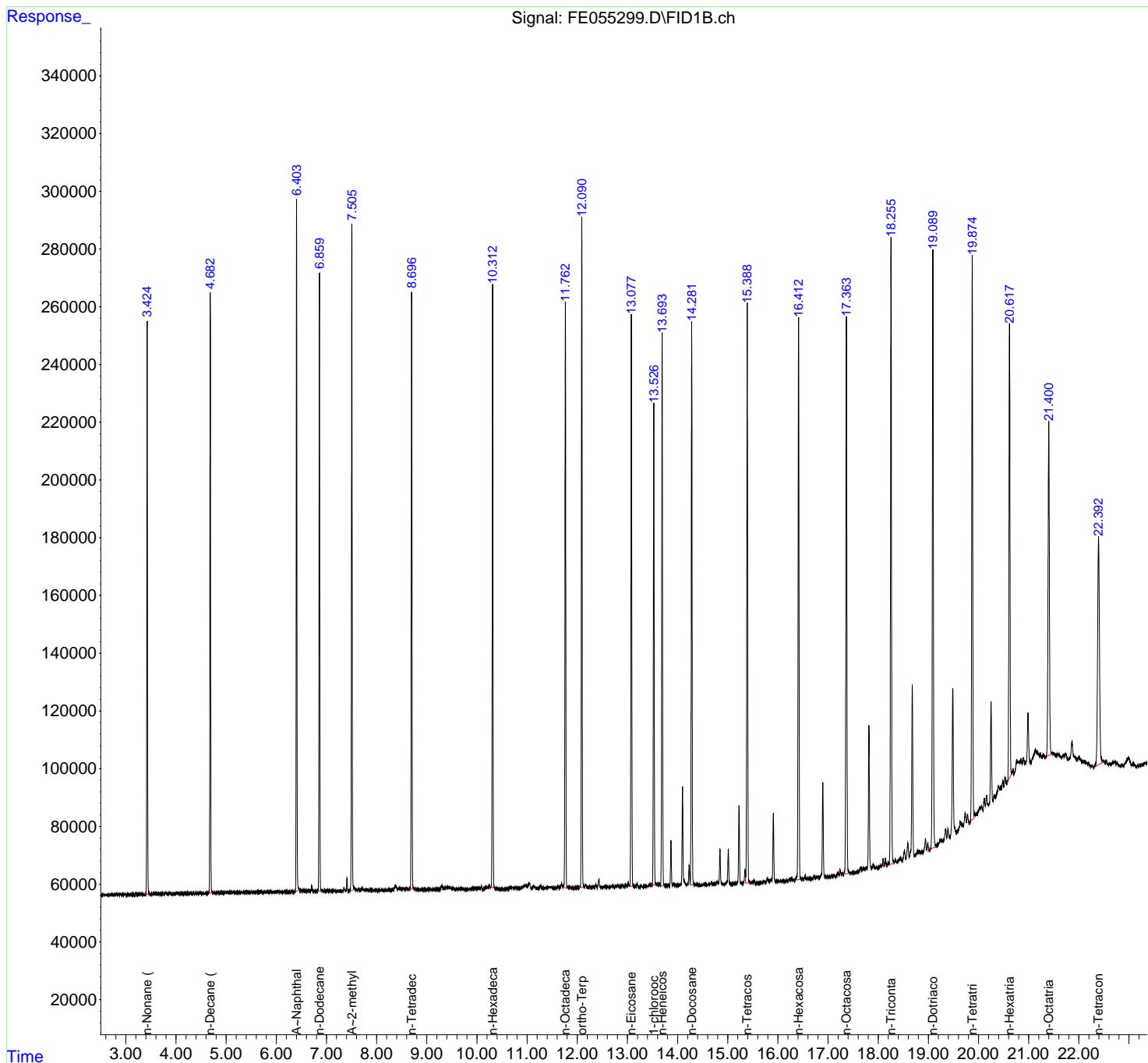
(m)=manual int.

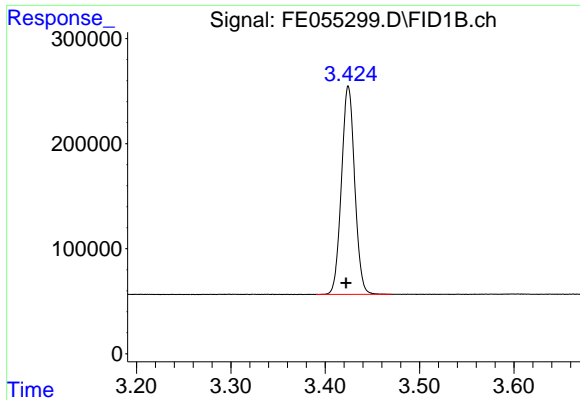
Data Path : Z:\pestpcbsrv\HPCHEM1\FID\_E\Data\FE081425AL\  
 Data File : FE055299.D  
 Signal(s) : FID1B.ch  
 Acq On : 14 Aug 2025 11:35  
 Operator : YP\AJ  
 Sample : 20 PPM ALIPHATIC HC STD  
 Misc :  
 ALS Vial : 2 Sample Multiplier: 1

Instrument :  
 FID\_E  
 ClientSampleId :  
 20 PPM ALIPHATIC HC STD

Integration File: autoint1.e  
 Quant Time: Aug 14 18:03:20 2025  
 Quant Method : Z:\pestpcbsrv\HPCHEM1\FID\_E\methods\Aliphatic EPH 080125.M  
 Quant Title : GC Extractables  
 QLast Update : Fri Aug 01 13:47:09 2025  
 Response via : Initial Calibration  
 Integrator: ChemStation

Volume Inj. : 1 ul  
 Signal Phase : Rxi-1ms  
 Signal Info : 20M x 0.18mm x 0.18um

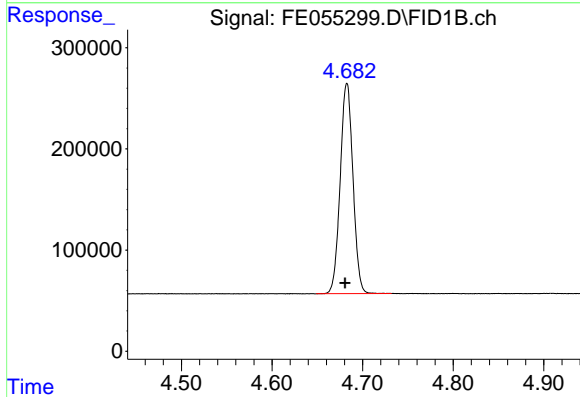




#1 n-Nonane (C9)

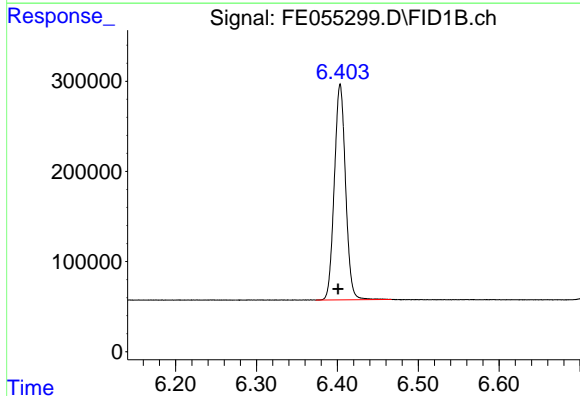
R.T.: 3.425 min  
 Delta R.T.: 0.003 min  
 Response: 1932582  
 Conc: 16.84 ug/ml

Instrument : FID\_E  
 ClientSampleId : 20 PPM ALIPHATIC HC STD



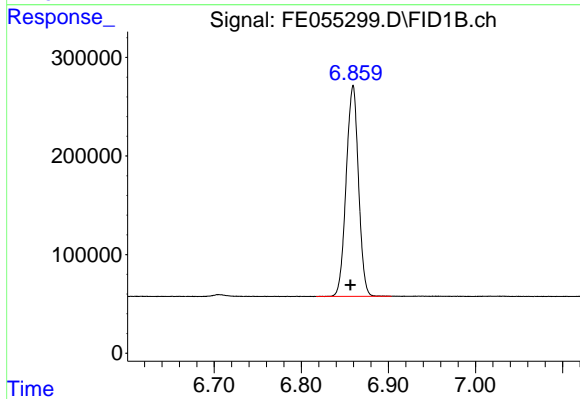
#2 n-Decane (C10)

R.T.: 4.683 min  
 Delta R.T.: 0.002 min  
 Response: 2035673  
 Conc: 17.47 ug/ml



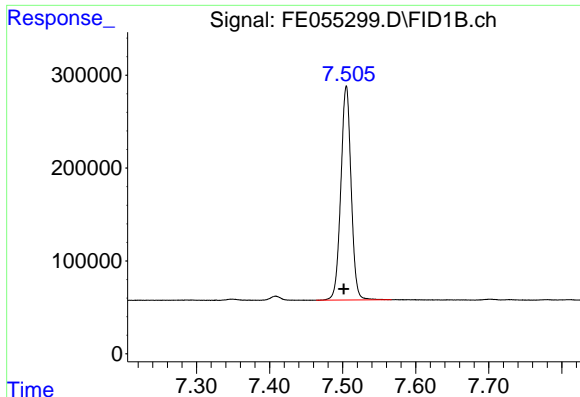
#3 A~Naphthalene (C11.7)

R.T.: 6.403 min  
 Delta R.T.: 0.003 min  
 Response: 2307393  
 Conc: 17.19 ug/ml



#4 n-Dodecane (C12)

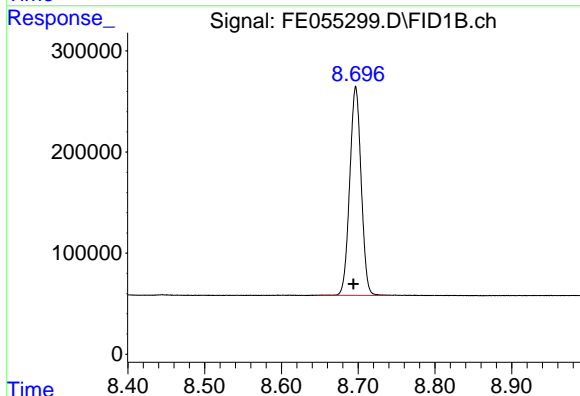
R.T.: 6.859 min  
 Delta R.T.: 0.003 min  
 Response: 2100798  
 Conc: 17.64 ug/ml



#5 A~2-methylnaphthalene (C12.89)

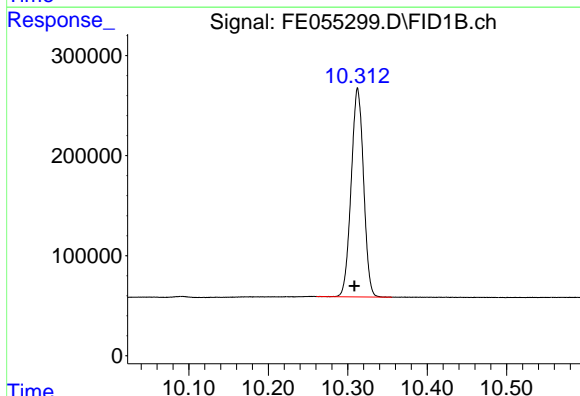
R.T.: 7.505 min  
 Delta R.T.: 0.004 min  
 Response: 2259595  
 Conc: 17.33 ug/ml

Instrument : FID\_E  
 ClientSampleId : 20 PPM ALIPHATIC HC STD



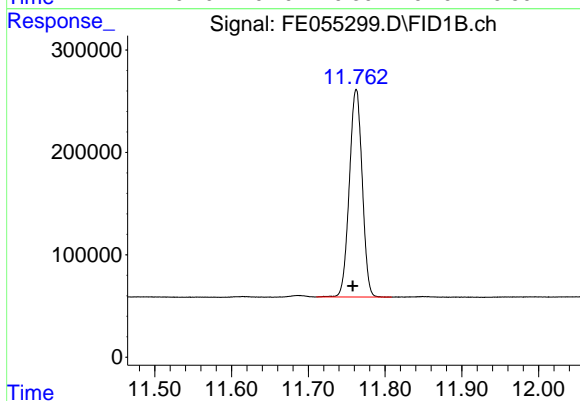
#6 n-Tetradecane (C14)

R.T.: 8.697 min  
 Delta R.T.: 0.003 min  
 Response: 2132155  
 Conc: 17.39 ug/ml



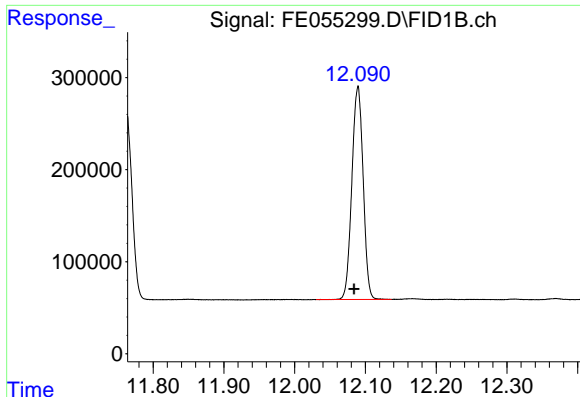
#7 n-Hexadecane (C16)

R.T.: 10.313 min  
 Delta R.T.: 0.004 min  
 Response: 2259031  
 Conc: 17.67 ug/ml



#8 n-Octadecane (C18)

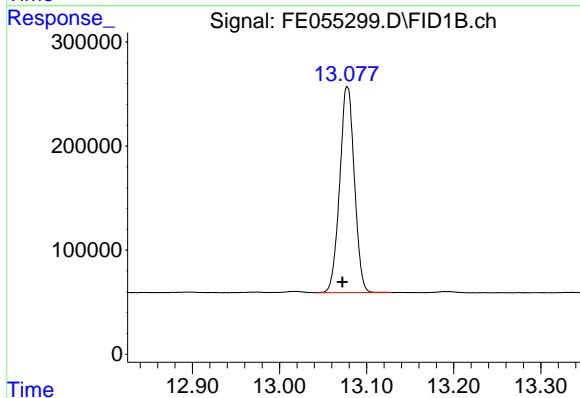
R.T.: 11.762 min  
 Delta R.T.: 0.005 min  
 Response: 2364886  
 Conc: 18.13 ug/ml



#9 ortho-Terphenyl (SURR)

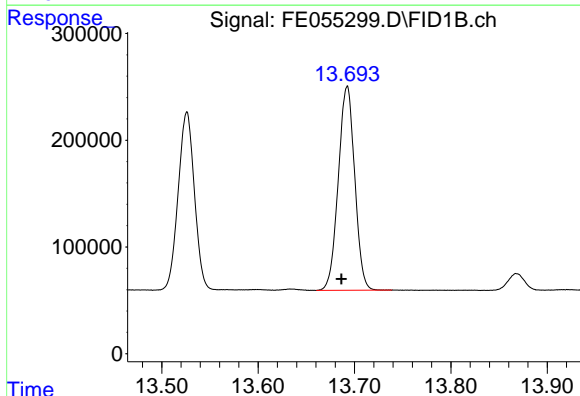
R.T.: 12.089 min  
 Delta R.T.: 0.005 min  
 Response: 2561934  
 Conc: 17.94 ug/ml

Instrument :  
 FID\_E  
 ClientSampleId :  
 20 PPM ALIPHATIC HC STD



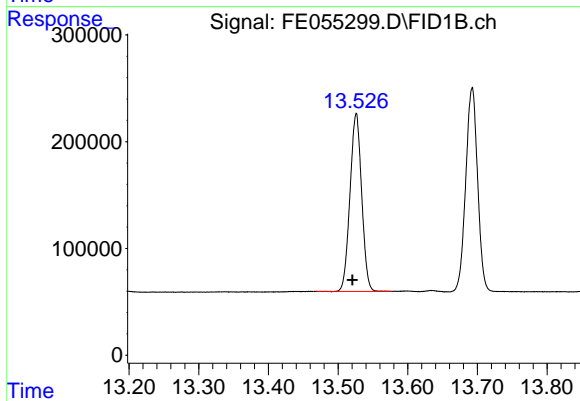
#10 n-Eicosane (C20)

R.T.: 13.078 min  
 Delta R.T.: 0.006 min  
 Response: 2316400  
 Conc: 18.46 ug/ml



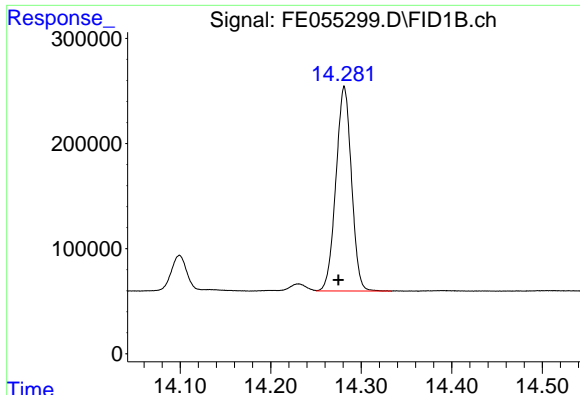
#11 n-Heneicosane (C21)

R.T.: 13.692 min  
 Delta R.T.: 0.006 min  
 Response: 2259825  
 Conc: 18.33 ug/ml



#12 1-chlorooctadecane (SURR)

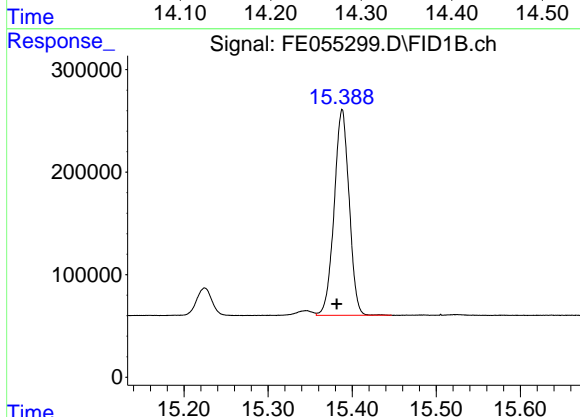
R.T.: 13.526 min  
 Delta R.T.: 0.006 min  
 Response: 1935498  
 Conc: 18.00 ug/ml



#13 n-Docosane (C22)

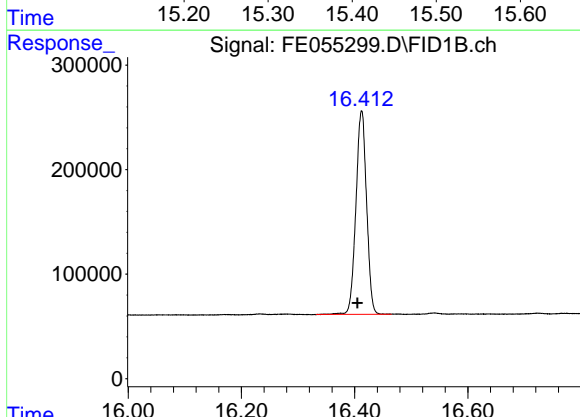
R.T.: 14.281 min  
 Delta R.T.: 0.006 min  
 Response: 2320873  
 Conc: 19.00 ug/ml

Instrument : FID\_E  
 ClientSampleId : 20 PPM ALIPHATIC HC STD



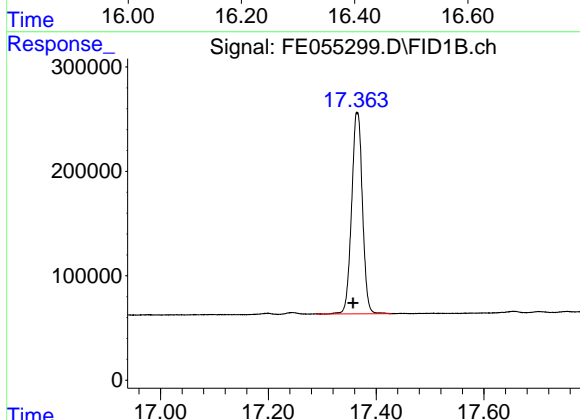
#14 n-Tetracosane (C24)

R.T.: 15.388 min  
 Delta R.T.: 0.006 min  
 Response: 2486793  
 Conc: 20.44 ug/ml



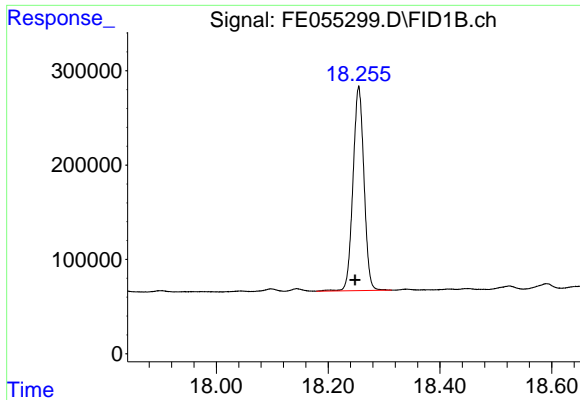
#15 n-Hexacosane (C26)

R.T.: 16.412 min  
 Delta R.T.: 0.007 min  
 Response: 2545080  
 Conc: 21.27 ug/ml



#16 n-Octacosane (C28)

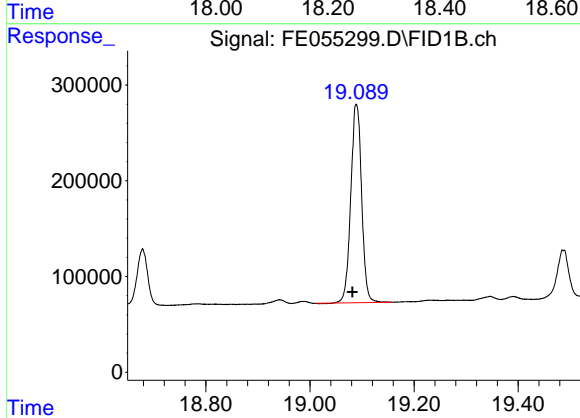
R.T.: 17.365 min  
 Delta R.T.: 0.008 min  
 Response: 2681729  
 Conc: 22.61 ug/ml



#17 n-Tricontane (C30)

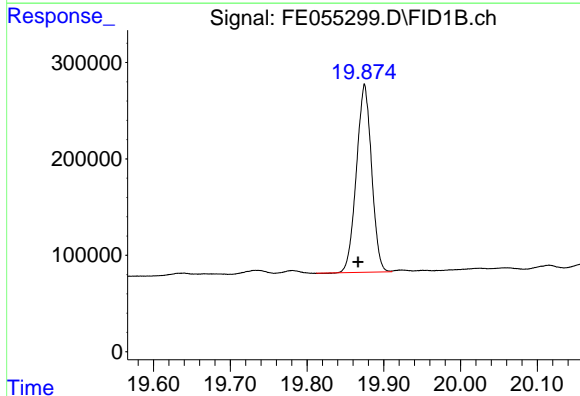
R.T.: 18.255 min  
 Delta R.T.: 0.007 min  
 Response: 2951913  
 Conc: 23.99 ug/ml

Instrument : FID\_E  
 ClientSampleId : 20 PPM ALIPHATIC HC STD



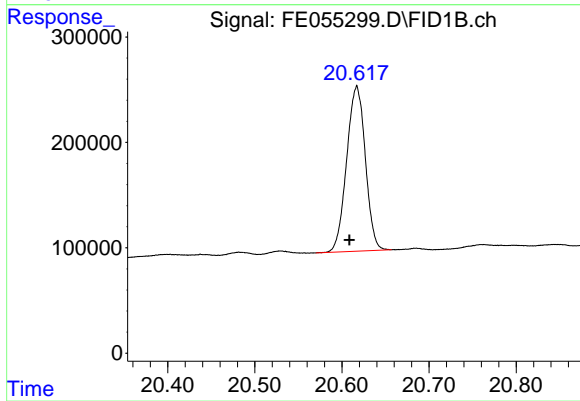
#18 n-Dotriacontane (C32)

R.T.: 19.089 min  
 Delta R.T.: 0.008 min  
 Response: 3001345  
 Conc: 24.60 ug/ml



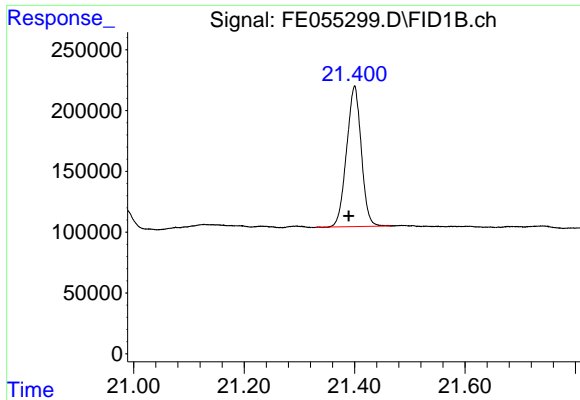
#19 n-Tetratriacontane (C34)

R.T.: 19.875 min  
 Delta R.T.: 0.008 min  
 Response: 2678146  
 Conc: 22.91 ug/ml



#20 n-Hexatriacontane (C36)

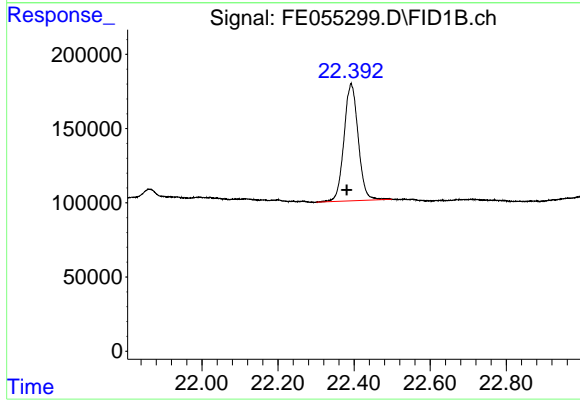
R.T.: 20.617 min  
 Delta R.T.: 0.008 min  
 Response: 2332482  
 Conc: 21.34 ug/ml



#21 n-Octatriacontane (C38)

R.T.: 21.400 min  
Delta R.T.: 0.010 min  
Response: 2133720  
Conc: 19.74 ug/ml

Instrument :  
FID\_E  
ClientSampleId :  
20 PPM ALIPHATIC HC STD



#22 n-Tetracontane (C40)

R.T.: 22.392 min  
Delta R.T.: 0.011 min  
Response: 2043139  
Conc: 19.54 ug/ml