

Data Path : Z:\pestpcbsrv\HPCHEM1\FID_E\Data\FE081425AL\
 Data File : FE055307.D
 Signal(s) : FID1B.ch
 Acq On : 14 Aug 2025 19:01
 Operator : YP\AJ
 Sample : Q2853-02
 Misc :
 ALS Vial : 18 Sample Multiplier: 1

Instrument :
 FID_E
 ClientSampleId :
 Tr-5-081325-E2

Integration File: autoint1.e
 Quant Time: Aug 15 11:58:59 2025
 Quant Method : Z:\pestpcbsrv\HPCHEM1\FID_E\methods\Aliphatic EPH 080125.M
 Quant Title : GC Extractables
 QLast Update : Fri Aug 01 13:47:09 2025
 Response via : Initial Calibration
 Integrator: ChemStation

Volume Inj. : 1 ul
 Signal Phase : Rxi-1ms
 Signal Info : 20M x 0.18mm x 0.18um

Compound	R.T.	Response	Conc Units

System Monitoring Compounds			
9) S ortho-Terphenyl (SURR)	12.087	3715761	26.020 ug/ml
Spiked Amount	50.000	Recovery	= 52.04%
12) S 1-chlorooctadecane (S...	13.524	2717327	25.272 ug/ml
Spiked Amount	50.000	Recovery	= 50.54%

Target Compounds

(f)=RT Delta > 1/2 Window

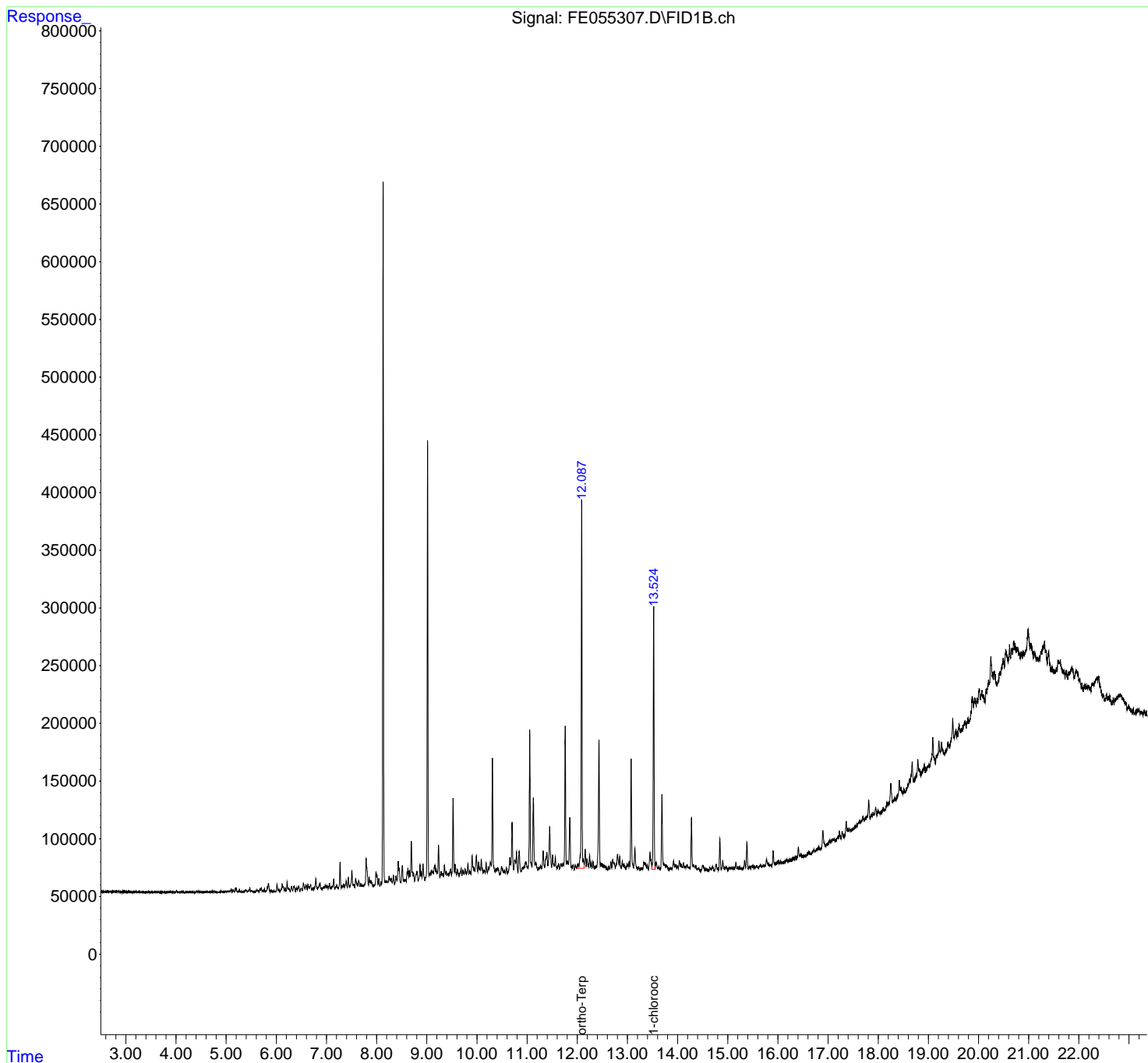
(m)=manual int.

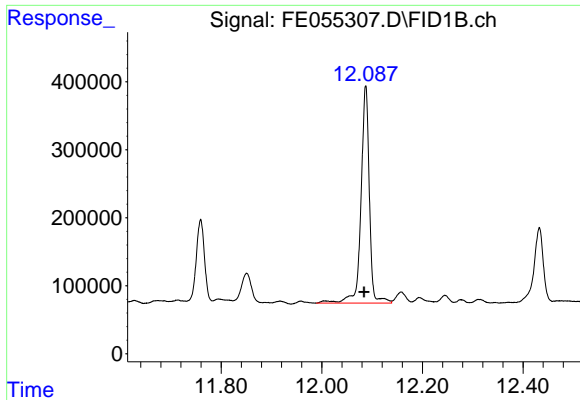
Data Path : Z:\pestpcbsrv\HPCHEM1\FID_E\Data\FE081425AL\
 Data File : FE055307.D
 Signal(s) : FID1B.ch
 Acq On : 14 Aug 2025 19:01
 Operator : YP\AJ
 Sample : Q2853-02
 Misc :
 ALS Vial : 18 Sample Multiplier: 1

Instrument :
 FID_E
 ClientSampleId :
 Tr-5-081325-E2

Integration File: autoint1.e
 Quant Time: Aug 15 11:58:59 2025
 Quant Method : Z:\pestpcbsrv\HPCHEM1\FID_E\methods\Aliphatic EPH 080125.M
 Quant Title : GC Extractables
 QLast Update : Fri Aug 01 13:47:09 2025
 Response via : Initial Calibration
 Integrator: ChemStation

Volume Inj. : 1 ul
 Signal Phase : Rxi-1ms
 Signal Info : 20M x 0.18mm x 0.18um

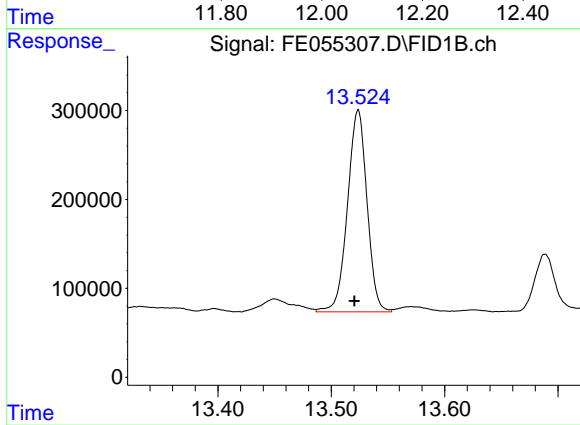




#9 ortho-Terphenyl (SURR)

R.T.: 12.087 min
Delta R.T.: 0.003 min
Response: 3715761
Conc: 26.02 ug/ml

Instrument :
FID_E
ClientSampleId :
Tr-5-081325-E2



#12 1-chlorooctadecane (SURR)

R.T.: 13.524 min
Delta R.T.: 0.003 min
Response: 2717327
Conc: 25.27 ug/ml