

Data Path : Z:\pestpcbsrv\HPCHEM1\FID\_E\Data\FE081522AL\  
 Data File : FE037068.D  
 Signal(s) : FID1B.ch  
 Acq On : 15 Aug 2022 20:51  
 Operator : YP\AJ  
 Sample : N4188-15  
 Misc :  
 ALS Vial : 21 Sample Multiplier: 1

Instrument :  
 FID\_E  
 ClientSampleId :  
 S14-EPH-2

Integration File: sample.E  
 Quant Time: Aug 16 02:58:12 2022  
 Quant Method : Z:\pestpcbsrv\HPCHEM1\FID\_E\methods\Aliphatic EPH 081222.M  
 Quant Title : GC Extractables  
 QLast Update : Fri Aug 12 07:36:15 2022  
 Response via : Initial Calibration  
 Integrator: ChemStation

Volume Inj. : 1 ul  
 Signal Phase : Rxi-1ms  
 Signal Info : 20M x 0.18mm x 0.18um

Compound	R.T.	Response	Conc Units
-----			
System Monitoring Compounds			
9) S ortho-Terphenyl (SURR)	11.818	4706818	25.590 ug/ml
Spiked Amount	50.000	Recovery	= 51.18%
12) S 1-chlorooctadecane (S...	13.256	3711322	25.429 ug/ml
Spiked Amount	50.000	Recovery	= 50.86%

Target Compounds

-----

(f)=RT Delta > 1/2 Window

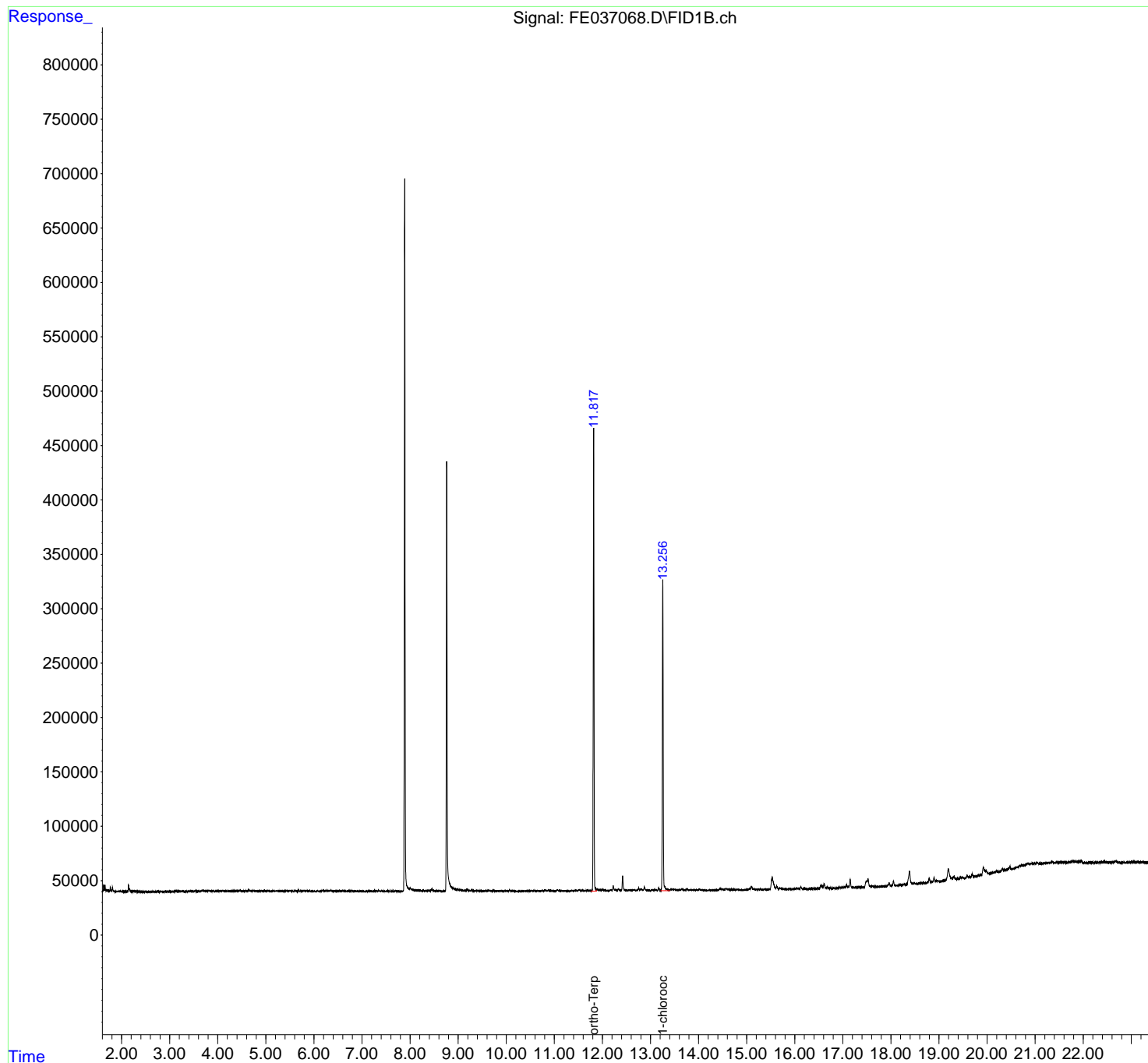
(m)=manual int.

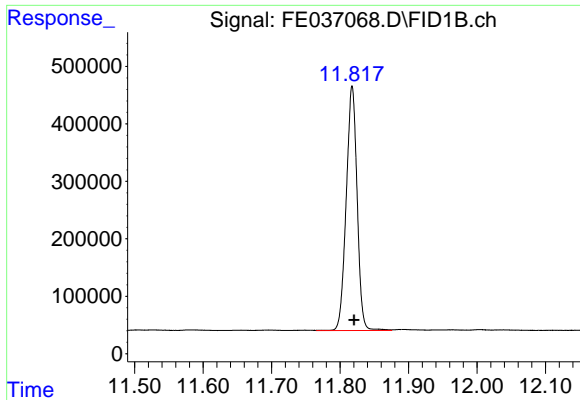
Data Path : Z:\pestpcbsrv\HPCHEM1\FID\_E\Data\FE081522AL\  
Data File : FE037068.D  
Signal(s) : FID1B.ch  
Acq On : 15 Aug 2022 20:51  
Operator : YP\AJ  
Sample : N4188-15  
Misc :  
ALS Vial : 21 Sample Multiplier: 1

Instrument :  
FID\_E  
ClientSampleId :  
S14-EPH-2

Integration File: sample.E  
Quant Time: Aug 16 02:58:12 2022  
Quant Method : Z:\pestpcbsrv\HPCHEM1\FID\_E\methods\Aliphatic EPH 081222.M  
Quant Title : GC Extractables  
QLast Update : Fri Aug 12 07:36:15 2022  
Response via : Initial Calibration  
Integrator: ChemStation

Volume Inj. : 1 ul  
Signal Phase : Rxi-1ms  
Signal Info : 20M x 0.18mm x 0.18um

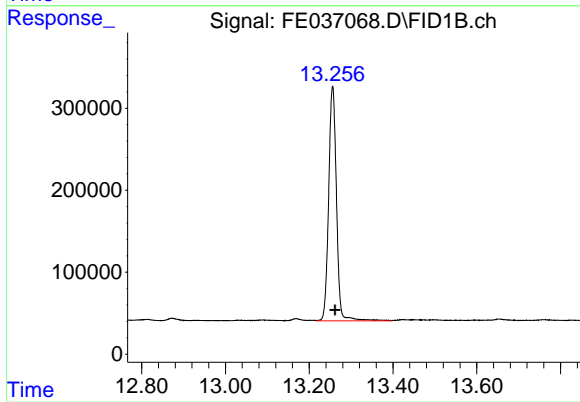




#9 ortho-Terphenyl (SURR)

R.T.: 11.818 min  
Delta R.T.: -0.003 min  
Response: 4706818  
Conc: 25.59 ug/ml

Instrument :  
FID\_E  
ClientSampleId :  
S14-EPH-2



#12 1-chlorooctadecane (SURR)

R.T.: 13.256 min  
Delta R.T.: -0.006 min  
Response: 3711322  
Conc: 25.43 ug/ml