

Data Path : Z:\pestpcbsrv\HPCHEM1\FID_E\Data\FE081522AL\
 Data File : FE037070.D
 Signal(s) : FID1B.ch
 Acq On : 15 Aug 2022 21:52
 Operator : YP\AJ
 Sample : N4188-18
 Misc :
 ALS Vial : 23 Sample Multiplier: 1

Instrument :
 FID_E
 ClientSampleId :
 S10-EPH-2

Integration File: sample.E
 Quant Time: Aug 16 02:58:37 2022
 Quant Method : Z:\pestpcbsrv\HPCHEM1\FID_E\methods\Aliphatic EPH 081222.M
 Quant Title : GC Extractables
 QLast Update : Fri Aug 12 07:36:15 2022
 Response via : Initial Calibration
 Integrator: ChemStation

Volume Inj. : 1 ul
 Signal Phase : Rxi-1ms
 Signal Info : 20M x 0.18mm x 0.18um

Compound	R.T.	Response	Conc Units

System Monitoring Compounds			
9) S ortho-Terphenyl (SURR)	11.817	4270010	23.215 ug/ml
Spiked Amount	50.000	Recovery	= 46.43%
12) S 1-chlorooctadecane (S...	13.255	3226539	22.108 ug/ml
Spiked Amount	50.000	Recovery	= 44.22%

Target Compounds

(f)=RT Delta > 1/2 Window

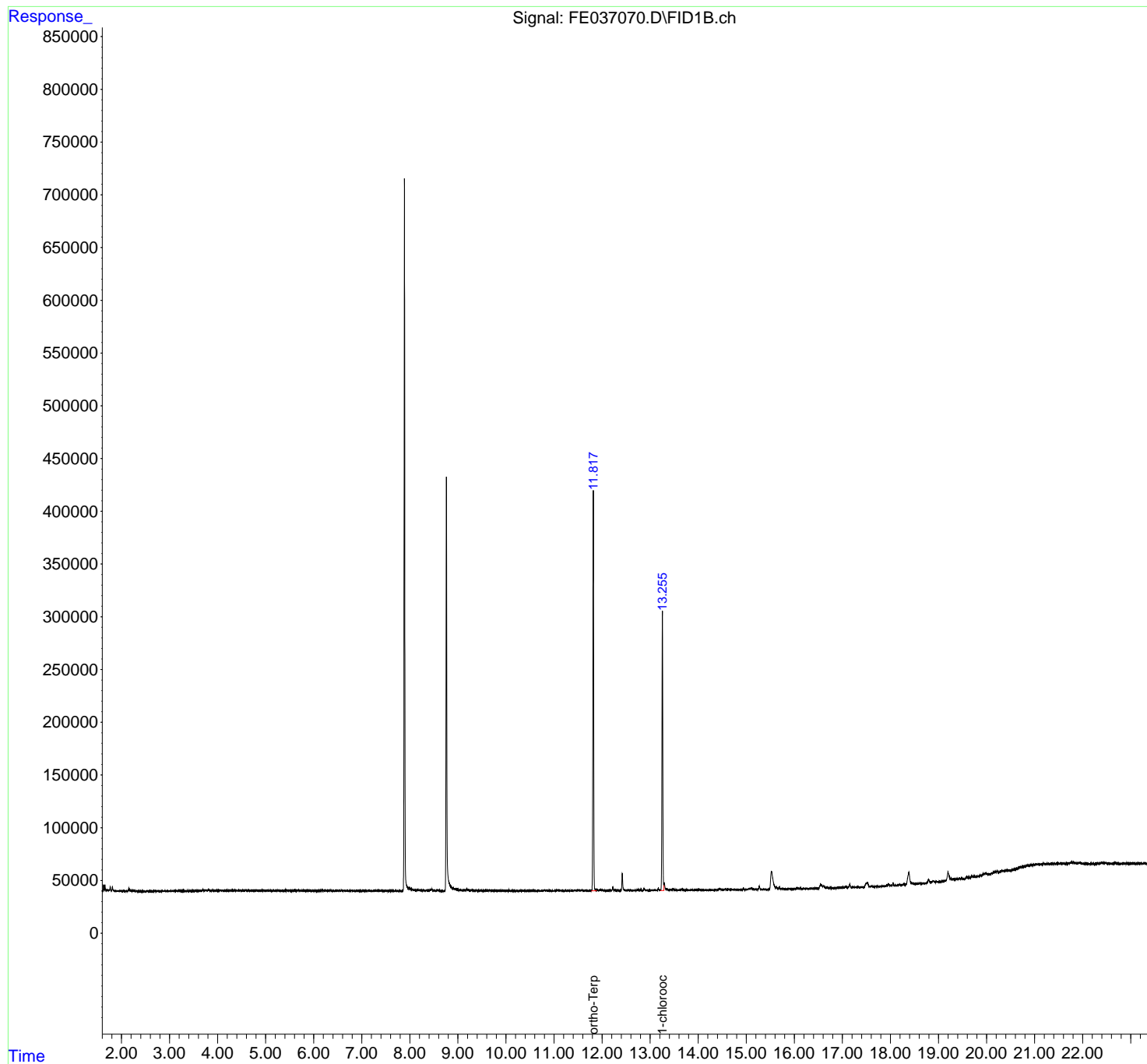
(m)=manual int.

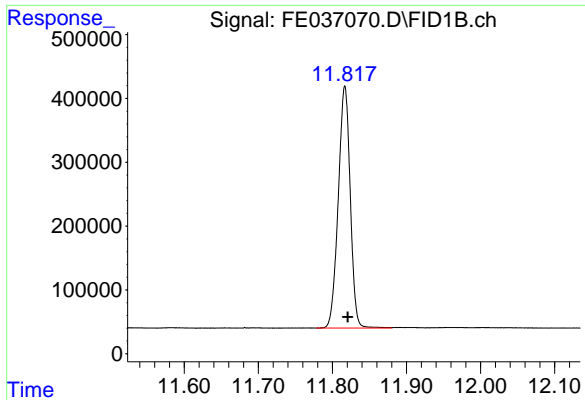
Data Path : Z:\pestpcbsrv\HPCHEM1\FID_E\Data\FE081522AL\
Data File : FE037070.D
Signal(s) : FID1B.ch
Acq On : 15 Aug 2022 21:52
Operator : YP\AJ
Sample : N4188-18
Misc :
ALS Vial : 23 Sample Multiplier: 1

Instrument :
FID_E
ClientSampleId :
S10-EPH-2

Integration File: sample.E
Quant Time: Aug 16 02:58:37 2022
Quant Method : Z:\pestpcbsrv\HPCHEM1\FID_E\methods\Aliphatic EPH 081222.M
Quant Title : GC Extractables
QLast Update : Fri Aug 12 07:36:15 2022
Response via : Initial Calibration
Integrator: ChemStation

Volume Inj. : 1 ul
Signal Phase : Rxi-1ms
Signal Info : 20M x 0.18mm x 0.18um

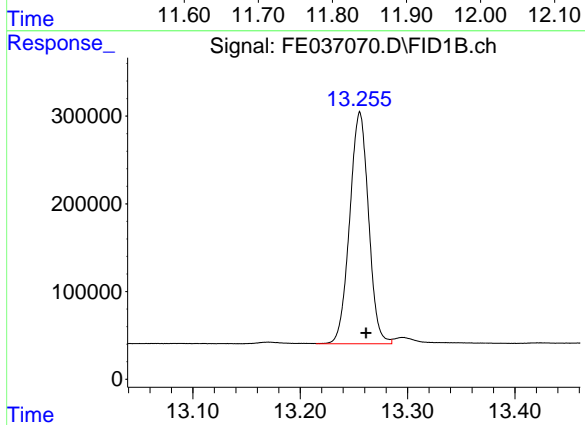




#9 ortho-Terphenyl (SURR)

R.T.: 11.817 min
Delta R.T.: -0.004 min
Response: 4270010
Conc: 23.21 ug/ml

Instrument :
FID_E
ClientSampleId :
S10-EPH-2



#12 1-chlorooctadecane (SURR)

R.T.: 13.255 min
Delta R.T.: -0.006 min
Response: 3226539
Conc: 22.11 ug/ml