

Data Path : Z:\pestpcbsrv\HPCHEM1\FID\_E\Data\FE081622AL\  
 Data File : FE037093.D  
 Signal(s) : FID1B.ch  
 Acq On : 16 Aug 2022 19:09  
 Operator : YP\AJ  
 Sample : N4205-06  
 Misc :  
 ALS Vial : 8 Sample Multiplier: 1

Instrument :  
 FID\_E  
 ClientSampleId :

Integration File: autoint1.e  
 Quant Time: Aug 17 06:01:45 2022  
 Quant Method : Z:\pestpcbsrv\HPCHEM1\FID\_E\methods\Aliphatic EPH 081222.M  
 Quant Title : GC Extractables  
 QLast Update : Fri Aug 12 07:36:15 2022  
 Response via : Initial Calibration  
 Integrator: ChemStation

Volume Inj. : 1 ul  
 Signal Phase : Rxi-1ms  
 Signal Info : 20M x 0.18mm x 0.18um

Compound	R.T.	Response	Conc Units
-----			
System Monitoring Compounds			
9) S ortho-Terphenyl (SURR)	11.816	4228557	22.989 ug/ml
Spiked Amount	50.000	Recovery	= 45.98%
12) S 1-chlorooctadecane (S...	13.256	3308896	22.672 ug/ml
Spiked Amount	50.000	Recovery	= 45.34%
Target Compounds			
10) T n-Eicosane (C20)	12.867	374137	2.279 ug/ml
-----			

(f)=RT Delta > 1/2 Window

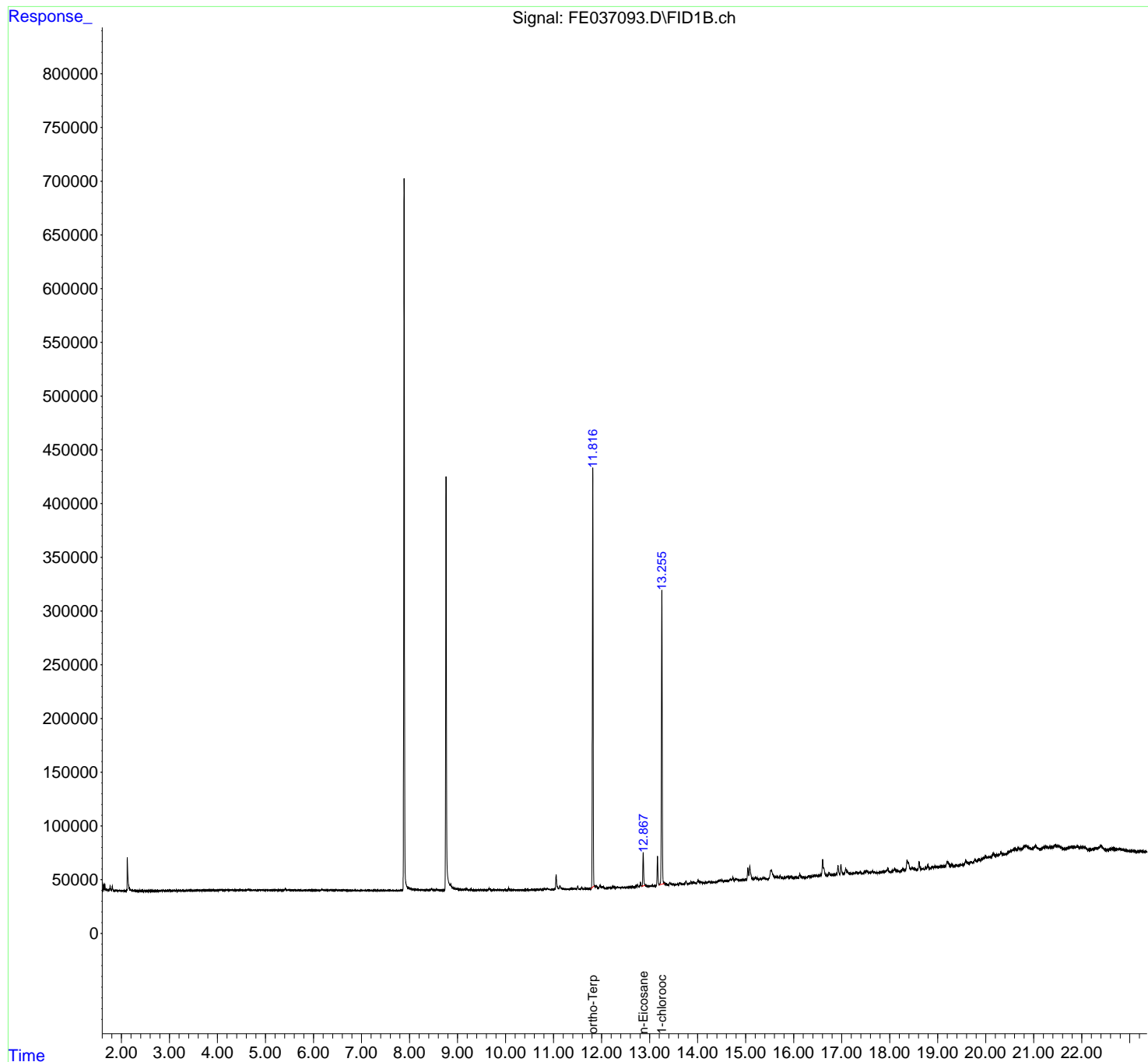
(m)=manual int.

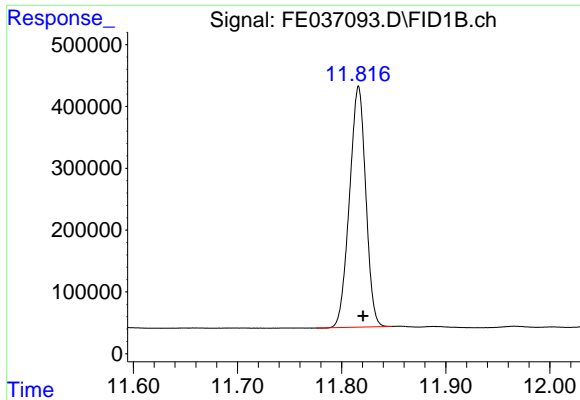
Data Path : Z:\pestpcbsrv\HPCHEM1\FID\_E\Data\FE081622AL\  
Data File : FE037093.D  
Signal(s) : FID1B.ch  
Acq On : 16 Aug 2022 19:09  
Operator : YP\AJ  
Sample : N4205-06  
Misc :  
ALS Vial : 8 Sample Multiplier: 1

Instrument :  
FID\_E  
ClientSampleId :

Integration File: autoint1.e  
Quant Time: Aug 17 06:01:45 2022  
Quant Method : Z:\pestpcbsrv\HPCHEM1\FID\_E\methods\Aliphatic EPH 081222.M  
Quant Title : GC Extractables  
QLast Update : Fri Aug 12 07:36:15 2022  
Response via : Initial Calibration  
Integrator: ChemStation

Volume Inj. : 1 ul  
Signal Phase : Rxi-1ms  
Signal Info : 20M x 0.18mm x 0.18um

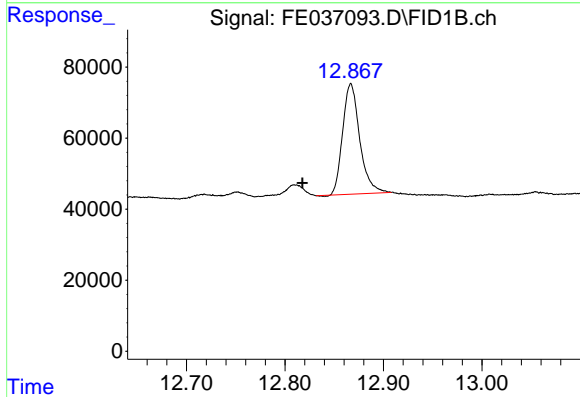




#9 ortho-Terphenyl (SURR)

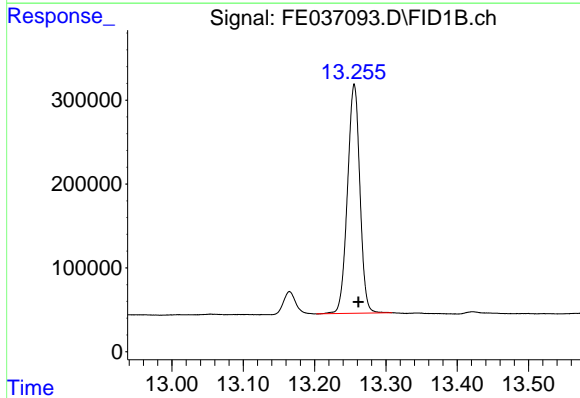
R.T.: 11.816 min  
 Delta R.T.: -0.004 min  
 Response: 4228557  
 Conc: 22.99 ug/ml

Instrument :  
 FID\_E  
 ClientSampleId :



#10 n-Eicosane (C20)

R.T.: 12.867 min  
 Delta R.T.: 0.049 min  
 Response: 374137  
 Conc: 2.28 ug/ml



#12 1-chlorooctadecane (SURR)

R.T.: 13.256 min  
 Delta R.T.: -0.006 min  
 Response: 3308896  
 Conc: 22.67 ug/ml