

Data Path : Z:\pestpcbsrv\HPCHEM1\FID_E\Data\FE081722AL\
 Data File : FE037138.D
 Signal(s) : FID1B.ch
 Acq On : 18 Aug 2022 01:13
 Operator : YP\AJ
 Sample : N4217-05
 Misc :
 ALS Vial : 22 Sample Multiplier: 1

Instrument :
 FID_E
 ClientSampleId :

Integration File: autoint1.e
 Quant Time: Aug 18 02:23:55 2022
 Quant Method : Z:\pestpcbsrv\HPCHEM1\FID_E\methods\Aliphatic EPH 081222.M
 Quant Title : GC Extractables
 QLast Update : Fri Aug 12 07:36:15 2022
 Response via : Initial Calibration
 Integrator: ChemStation

Volume Inj. : 1 ul
 Signal Phase : Rxi-1ms
 Signal Info : 20M x 0.18mm x 0.18um

Compound	R.T.	Response	Conc Units

System Monitoring Compounds			
9) S ortho-Terphenyl (SURR)	11.815	6692333	36.384 ug/ml
Spiked Amount	50.000	Recovery	= 72.77%
12) S 1-chlorooctadecane (S...	13.254	5254180	36.001 ug/ml
Spiked Amount	50.000	Recovery	= 72.00%

Target Compounds

(f)=RT Delta > 1/2 Window

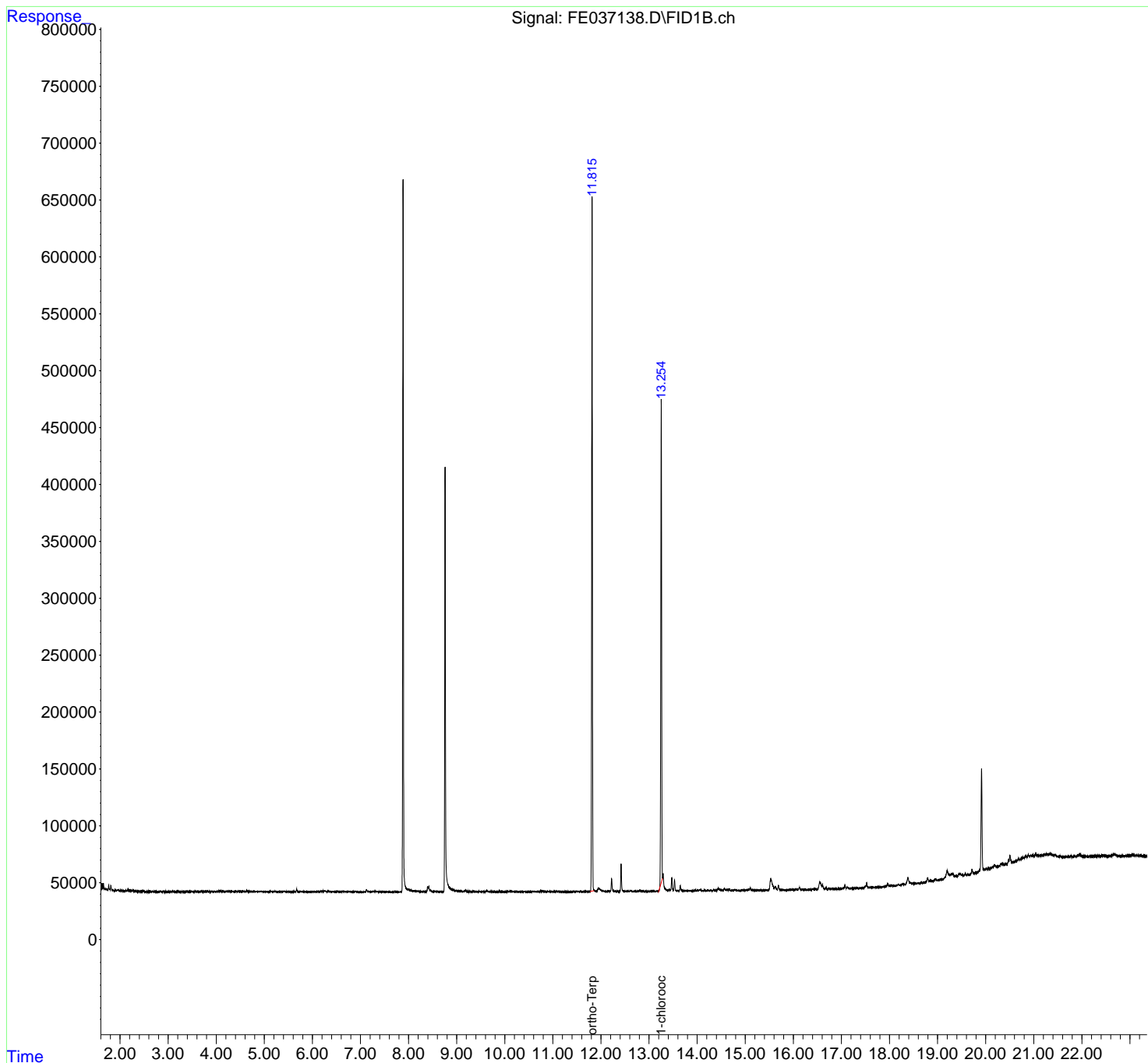
(m)=manual int.

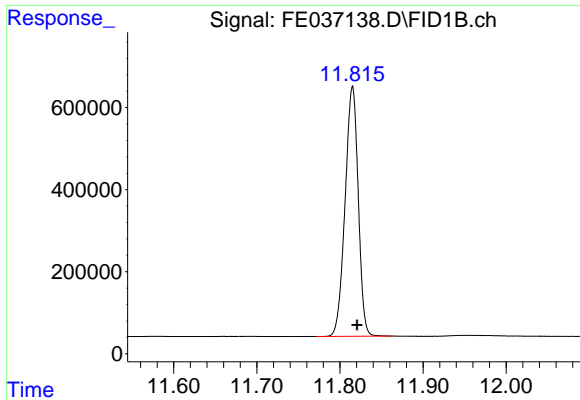
Data Path : Z:\pestpcbsrv\HPCHEM1\FID_E\Data\FE081722AL\
Data File : FE037138.D
Signal(s) : FID1B.ch
Acq On : 18 Aug 2022 01:13
Operator : YP\AJ
Sample : N4217-05
Misc :
ALS Vial : 22 Sample Multiplier: 1

Instrument :
FID_E
ClientSampleId :

Integration File: autoint1.e
Quant Time: Aug 18 02:23:55 2022
Quant Method : Z:\pestpcbsrv\HPCHEM1\FID_E\methods\Aliphatic EPH 081222.M
Quant Title : GC Extractables
QLast Update : Fri Aug 12 07:36:15 2022
Response via : Initial Calibration
Integrator: ChemStation

Volume Inj. : 1 ul
Signal Phase : Rxi-1ms
Signal Info : 20M x 0.18mm x 0.18um

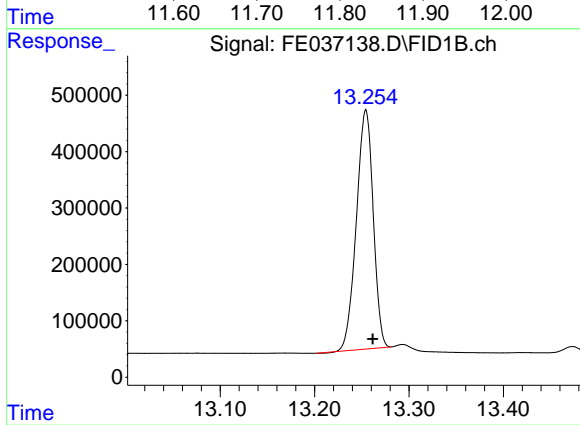




#9 ortho-Terphenyl (SURR)

R.T.: 11.815 min
Delta R.T.: -0.005 min
Response: 6692333
Conc: 36.38 ug/ml

Instrument :
FID_E
ClientSampleId :



#12 1-chlorooctadecane (SURR)

R.T.: 13.254 min
Delta R.T.: -0.007 min
Response: 5254180
Conc: 36.00 ug/ml