

Data Path : Z:\pestpcbsrv\HPCHEM1\FID\_E\Data\FE081722AL\  
 Data File : FE037148.D  
 Signal(s) : FID1B.ch  
 Acq On : 18 Aug 2022 06:17  
 Operator : YP\AJ  
 Sample : N4124-05DL 5X  
 Misc :  
 ALS Vial : 32 Sample Multiplier: 1

Instrument :  
 FID\_E  
 ClientSampleId :  
 SSP5DL

Integration File: autoint1.e  
 Quant Time: Aug 18 06:46:27 2022  
 Quant Method : Z:\pestpcbsrv\HPCHEM1\FID\_E\methods\Aliphatic EPH 081222.M  
 Quant Title : GC Extractables  
 QLast Update : Fri Aug 12 07:36:15 2022  
 Response via : Initial Calibration  
 Integrator: ChemStation

Volume Inj. : 1 ul  
 Signal Phase : Rxi-1ms  
 Signal Info : 20M x 0.18mm x 0.18um

Compound	R.T.	Response	Conc Units
-----			
System Monitoring Compounds			
12) S 1-chlorooctadecane (S...	13.257	790145	5.414 ug/ml
Spiked Amount	50.000	Recovery =	10.83%

Target Compounds

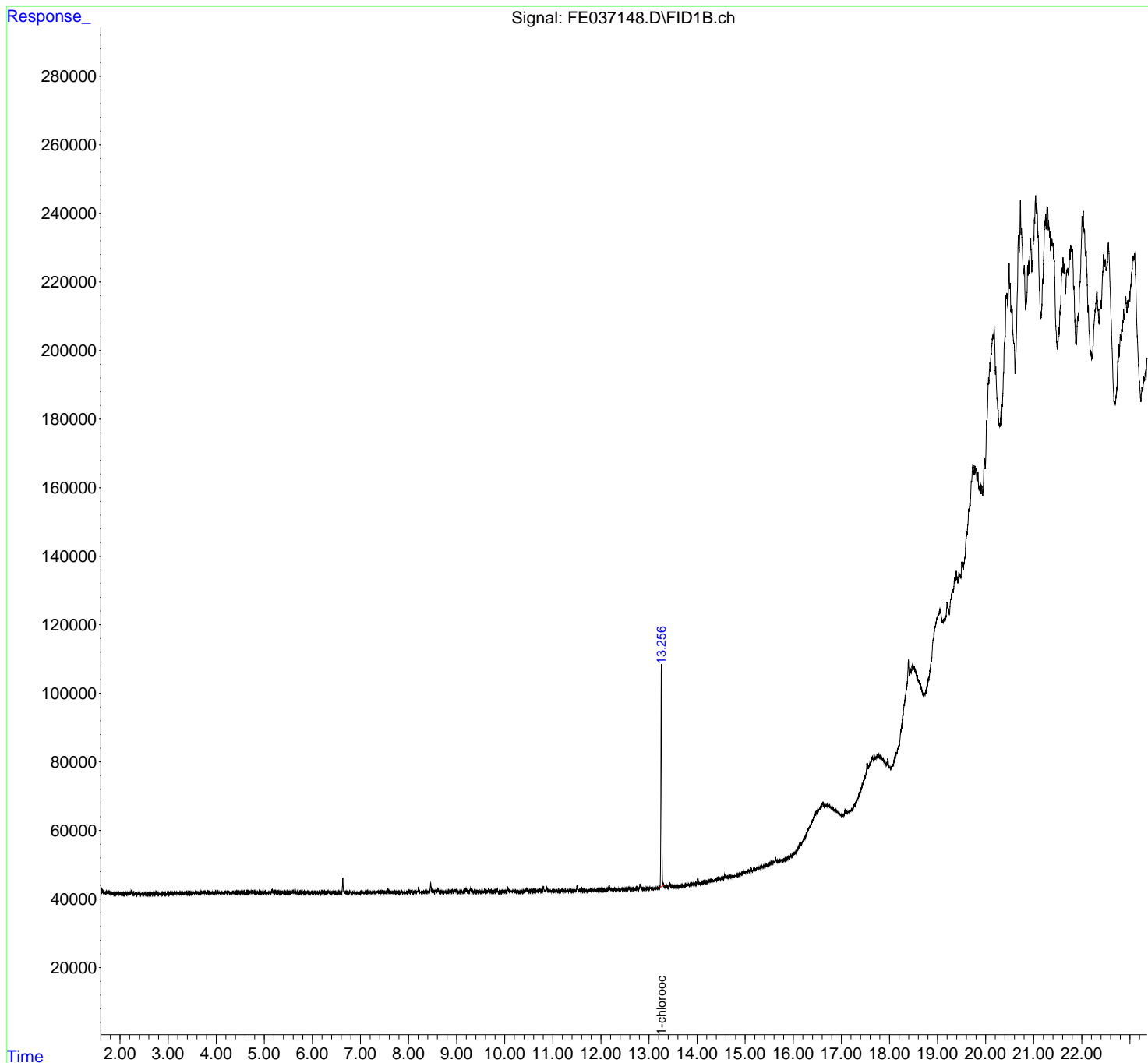
(f)=RT Delta > 1/2 Window (m)=manual int.

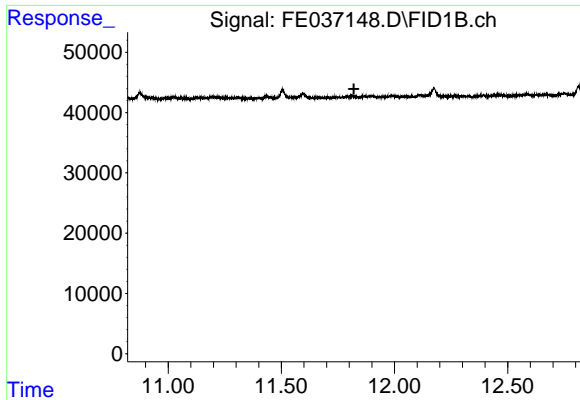
Data Path : Z:\pestpcbsrv\HPCHEM1\FID\_E\Data\FE081722AL\  
 Data File : FE037148.D  
 Signal(s) : FID1B.ch  
 Acq On : 18 Aug 2022 06:17  
 Operator : YP\AJ  
 Sample : N4124-05DL 5X  
 Misc :  
 ALS Vial : 32 Sample Multiplier: 1

Instrument :  
 FID\_E  
 ClientSampleId :  
 SSP5DL

Integration File: autoint1.e  
 Quant Time: Aug 18 06:46:27 2022  
 Quant Method : Z:\pestpcbsrv\HPCHEM1\FID\_E\methods\Aliphatic EPH 081222.M  
 Quant Title : GC Extractables  
 QLast Update : Fri Aug 12 07:36:15 2022  
 Response via : Initial Calibration  
 Integrator: ChemStation

Volume Inj. : 1 ul  
 Signal Phase : Rxi-1ms  
 Signal Info : 20M x 0.18mm x 0.18um

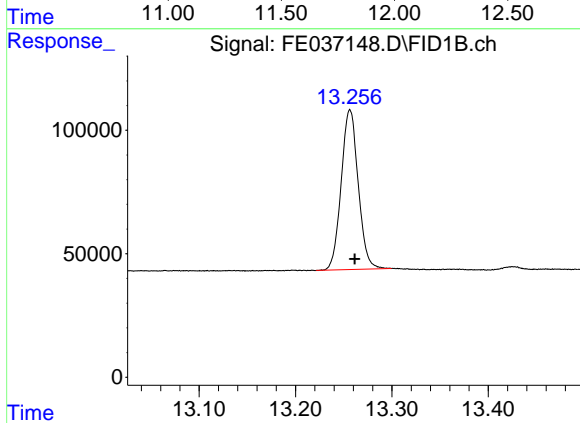




#9 ortho-Terphenyl (SURR)

R.T.: 0.000 min  
Exp R.T.: 11.821 min  
Response: 0  
Conc: N.D.

Instrument :  
FID\_E  
ClientSampleId :  
SSP5DL



#12 1-chlorooctadecane (SURR)

R.T.: 13.257 min  
Delta R.T.: -0.005 min  
Response: 790145  
Conc: 5.41 ug/ml