

Data Path : Z:\pestpcbsrv\HPCHEM1\FID_E\Data\FE081723AL\
 Data File : FE044017.D
 Signal(s) : FID1B.ch
 Acq On : 17 Aug 2023 11:17
 Operator : YP\AJ
 Sample : 20 PPM ALIPHATIC HC STD
 Misc :
 ALS Vial : 2 Sample Multiplier: 1

Instrument :
 FID_E
 ClientSampleId :
 20 PPM ALIPHATIC HC STD

Integration File: autoint1.e
 Quant Time: Aug 17 23:43:31 2023
 Quant Method : Z:\pestpcbsrv\HPCHEM1\FID_E\methods\Aliphatic EPH 080323.M
 Quant Title : GC Extractables
 QLast Update : Wed Aug 02 09:56:52 2023
 Response via : Initial Calibration
 Integrator: ChemStation

Volume Inj. : 1 ul
 Signal Phase : Rxi-1ms
 Signal Info : 20M x 0.18mm x 0.18um

Compound	R.T.	Response	Conc Units

System Monitoring Compounds			
9) S ortho-Terphenyl (SURR)	11.946	4002134	19.421 ug/ml
Spiked Amount	50.000	Recovery =	38.84%
12) S 1-chlorooctadecane (S...	13.384	2986619	19.139 ug/ml
Spiked Amount	50.000	Recovery =	38.28%
Target Compounds			
1) T n-Nonane (C9)	3.339	3381474	20.940 ug/ml
2) T n-Decane (C10)	4.589	3478029	21.103 ug/ml
3) T A~Naphthalene (C11.7)	6.289	3838915	21.085 ug/ml
4) T n-Dodecane (C12)	6.751	3531936	21.103 ug/ml
5) T A~2-methylnaphthalene...	7.383	3688440	20.718 ug/ml
6) T n-Tetradecane (C14)	8.577	3521340	20.900 ug/ml
7) T n-Hexadecane (C16)	10.185	3620394	20.524 ug/ml
8) T n-Octadecane (C18)	11.629	3642801	20.110 ug/ml
10) T n-Eicosane (C20)	12.939	3471753	19.618 ug/ml
11) T n-Heneicosane (C21)	13.550	3389208	19.141 ug/ml
13) T n-Docosane (C22)	14.138	3340828	19.047 ug/ml
14) T n-Tetracosane (C24)	15.242	3282570	18.683 ug/ml
15) T n-Hexacosane (C26)	16.263	3183926	18.422 ug/ml
16) T n-Octacosane (C28)	17.213	3040464	18.172 ug/ml
17) T n-Tricontane (C30)	18.102	3059694	18.473 ug/ml
18) T n-Dotriacontane (C32)	18.935	2979609	18.871 ug/ml
19) T n-Tetratriacontane (C34)	19.720	2896451	19.492 ug/ml
20) T n-Hexatriacontane (C36)	20.461	2839615	20.315 ug/ml
21) T n-Octatriacontane (C38)	21.205	2874498	21.547 ug/ml
22) T n-Tetracontane (C40)	22.132	2952061	22.879 ug/ml

(f)=RT Delta > 1/2 Window

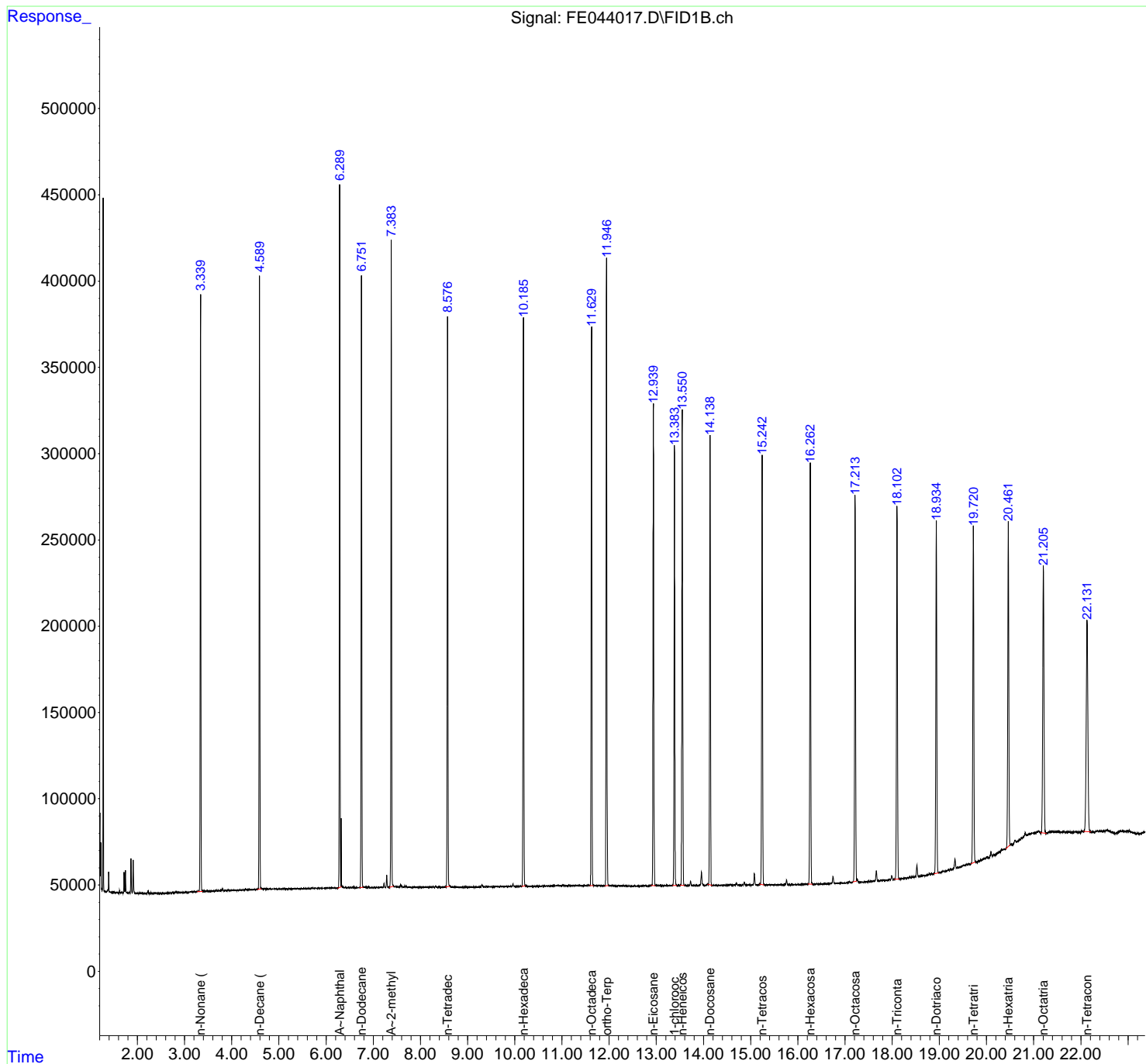
(m)=manual int.

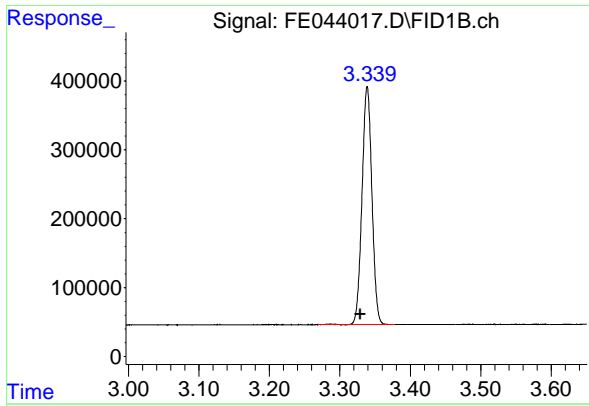
Data Path : Z:\pestpcbsrv\HPCHEM1\FID_E\Data\FE081723AL\
 Data File : FE044017.D
 Signal(s) : FID1B.ch
 Acq On : 17 Aug 2023 11:17
 Operator : YP\AJ
 Sample : 20 PPM ALIPHATIC HC STD
 Misc :
 ALS Vial : 2 Sample Multiplier: 1

Instrument :
 FID_E
 ClientSampleId :
 20 PPM ALIPHATIC HC STD

Integration File: autoint1.e
 Quant Time: Aug 17 23:43:31 2023
 Quant Method : Z:\pestpcbsrv\HPCHEM1\FID_E\methods\Aliphatic EPH 080323.M
 Quant Title : GC Extractables
 QLast Update : Wed Aug 02 09:56:52 2023
 Response via : Initial Calibration
 Integrator: ChemStation

Volume Inj. : 1 ul
 Signal Phase : Rxi-1ms
 Signal Info : 20M x 0.18mm x 0.18um

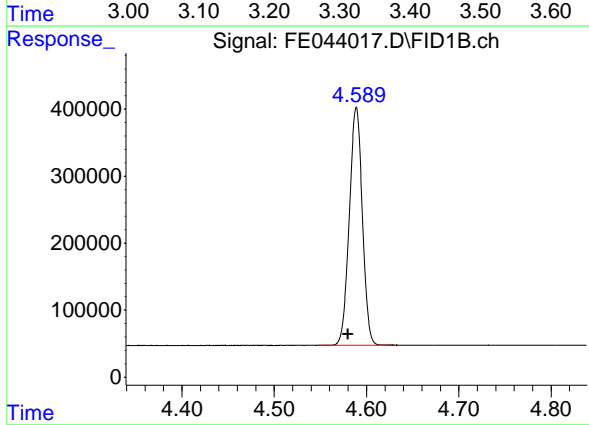




#1 n-Nonane (C9)

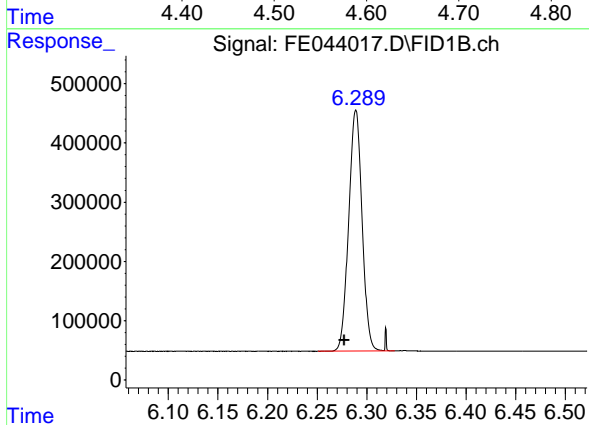
R.T.: 3.339 min
 Delta R.T.: 0.010 min
 Response: 3381474
 Conc: 20.94 ug/ml

Instrument : FID_E
 ClientSampleId : 20 PPM ALIPHATIC HC STD



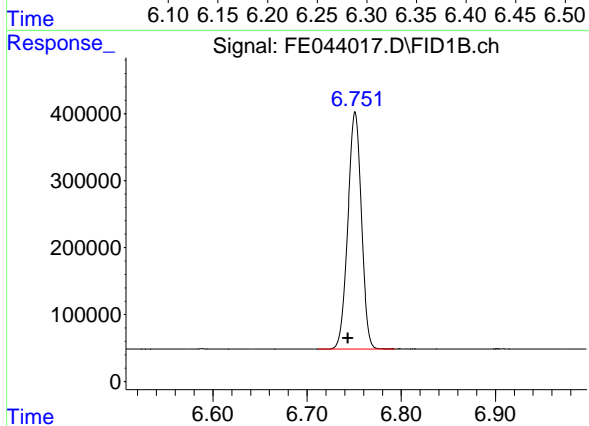
#2 n-Decane (C10)

R.T.: 4.589 min
 Delta R.T.: 0.009 min
 Response: 3478029
 Conc: 21.10 ug/ml



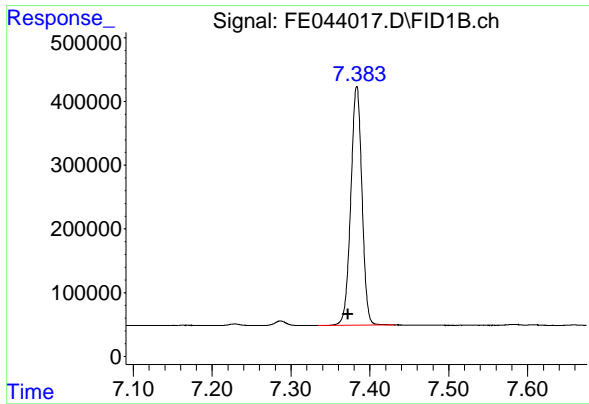
#3 A~Naphthalene (C11.7)

R.T.: 6.289 min
 Delta R.T.: 0.012 min
 Response: 3838915
 Conc: 21.08 ug/ml



#4 n-Dodecane (C12)

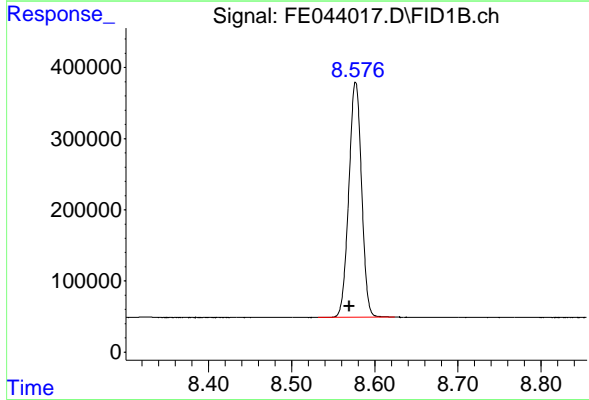
R.T.: 6.751 min
 Delta R.T.: 0.008 min
 Response: 3531936
 Conc: 21.10 ug/ml



#5 A~2-methylnaphthalene (C12.89)

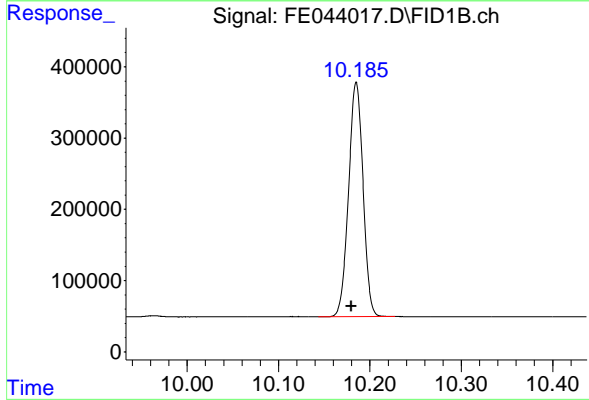
R.T.: 7.383 min
 Delta R.T.: 0.011 min
 Response: 3688440
 Conc: 20.72 ug/ml

Instrument : FID_E
 ClientSampleId : 20 PPM ALIPHATIC HC STD



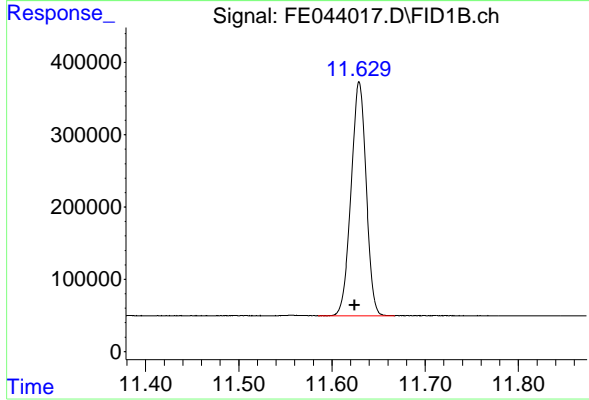
#6 n-Tetradecane (C14)

R.T.: 8.577 min
 Delta R.T.: 0.007 min
 Response: 3521340
 Conc: 20.90 ug/ml



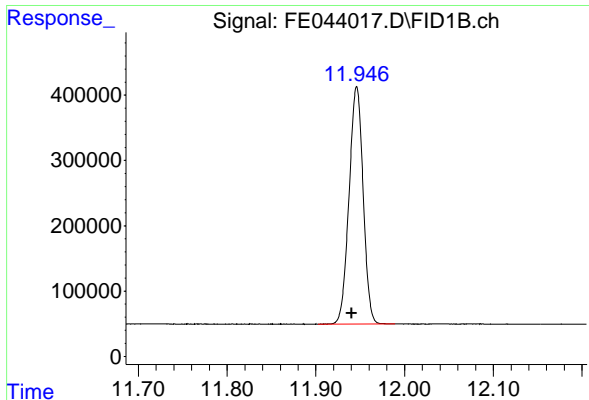
#7 n-Hexadecane (C16)

R.T.: 10.185 min
 Delta R.T.: 0.005 min
 Response: 3620394
 Conc: 20.52 ug/ml



#8 n-Octadecane (C18)

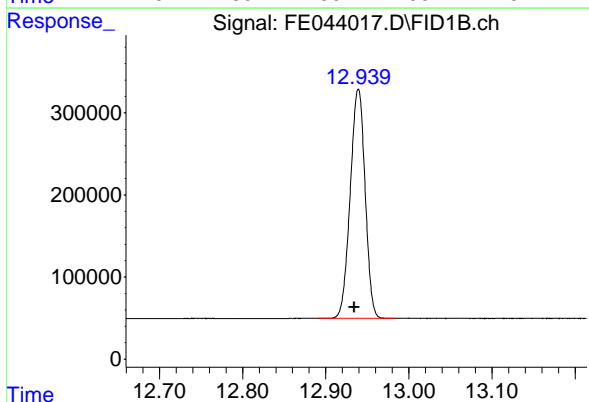
R.T.: 11.629 min
 Delta R.T.: 0.005 min
 Response: 3642801
 Conc: 20.11 ug/ml



#9 ortho-Terphenyl (SURR)

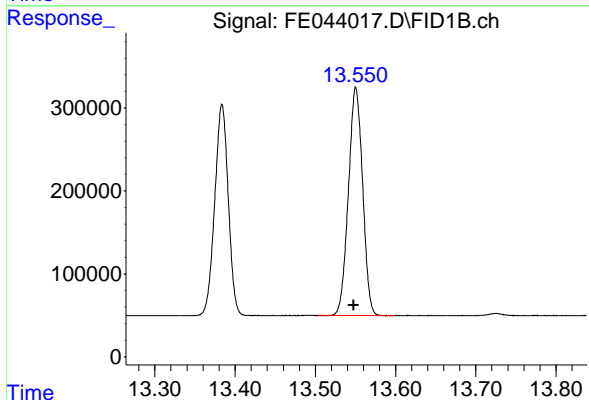
R.T.: 11.946 min
 Delta R.T.: 0.006 min
 Response: 4002134
 Conc: 19.42 ug/ml

Instrument : FID_E
 ClientSampleId : 20 PPM ALIPHATIC HC STD



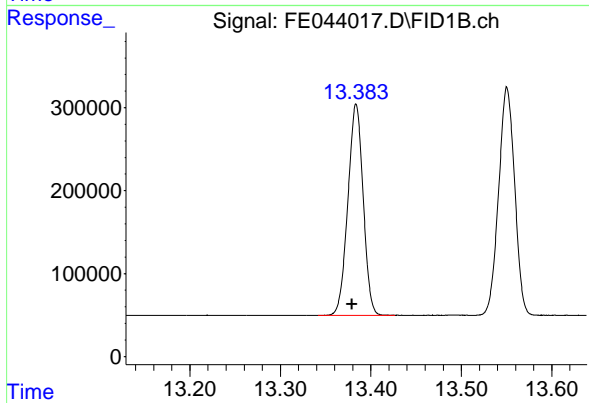
#10 n-Eicosane (C20)

R.T.: 12.939 min
 Delta R.T.: 0.005 min
 Response: 3471753
 Conc: 19.62 ug/ml



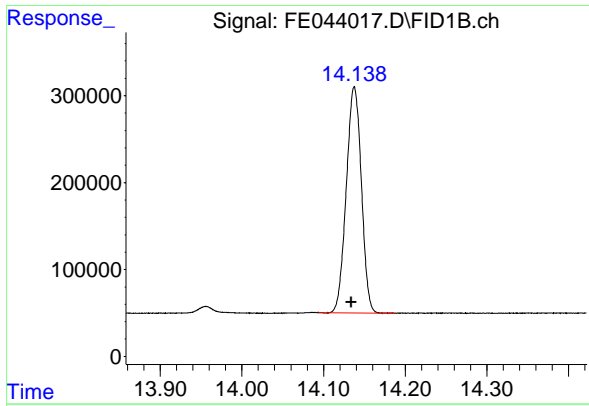
#11 n-Heneicosane (C21)

R.T.: 13.550 min
 Delta R.T.: 0.002 min
 Response: 3389208
 Conc: 19.14 ug/ml



#12 1-chlorooctadecane (SURR)

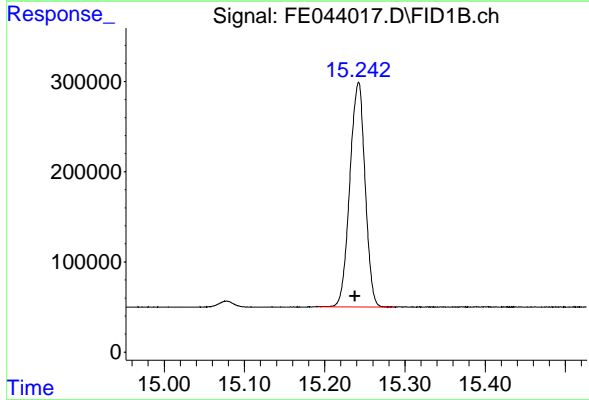
R.T.: 13.384 min
 Delta R.T.: 0.005 min
 Response: 2986619
 Conc: 19.14 ug/ml



#13 n-Docosane (C22)

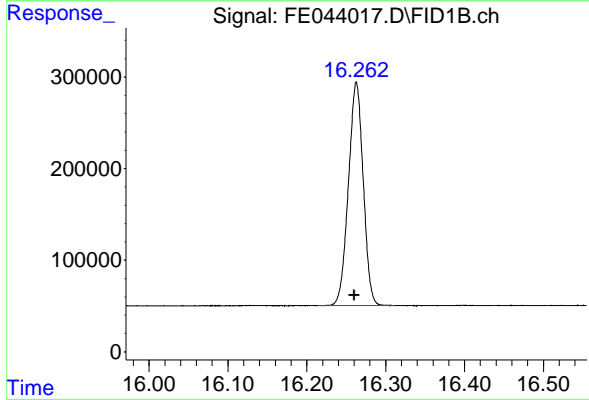
R.T.: 14.138 min
 Delta R.T.: 0.004 min
 Response: 3340828
 Conc: 19.05 ug/ml

Instrument : FID_E
 ClientSampleId : 20 PPM ALIPHATIC HC STD



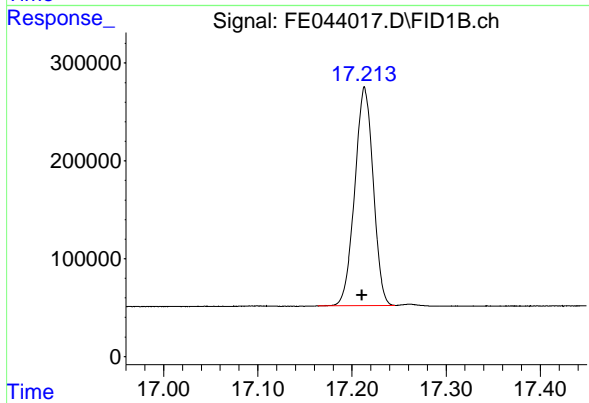
#14 n-Tetracosane (C24)

R.T.: 15.242 min
 Delta R.T.: 0.005 min
 Response: 3282570
 Conc: 18.68 ug/ml



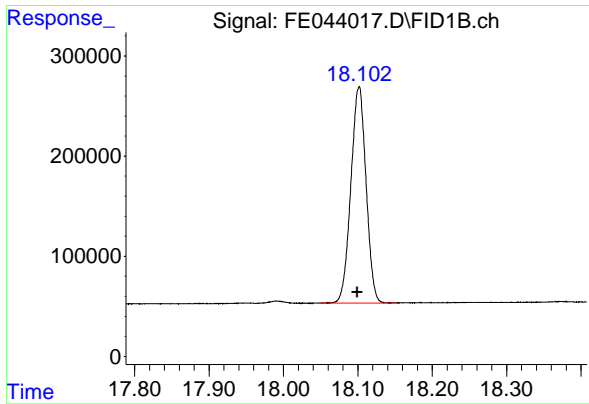
#15 n-Hexacosane (C26)

R.T.: 16.263 min
 Delta R.T.: 0.003 min
 Response: 3183926
 Conc: 18.42 ug/ml



#16 n-Octacosane (C28)

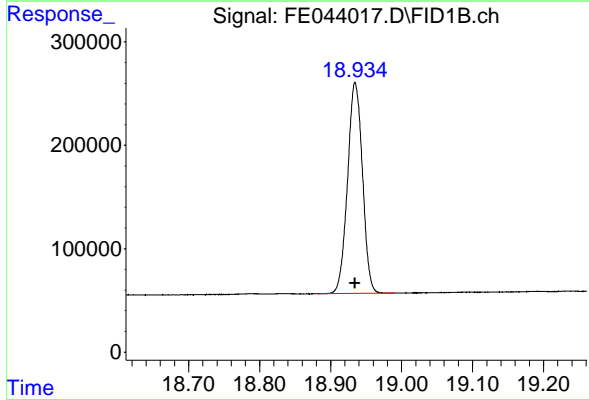
R.T.: 17.213 min
 Delta R.T.: 0.003 min
 Response: 3040464
 Conc: 18.17 ug/ml



#17 n-Tricontane (C30)

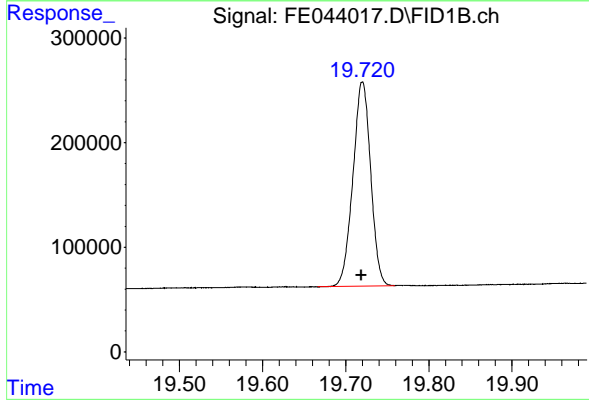
R.T.: 18.102 min
Delta R.T.: 0.002 min
Response: 3059694
Conc: 18.47 ug/ml

Instrument : FID_E
ClientSampleId : 20 PPM ALIPHATIC HC STD



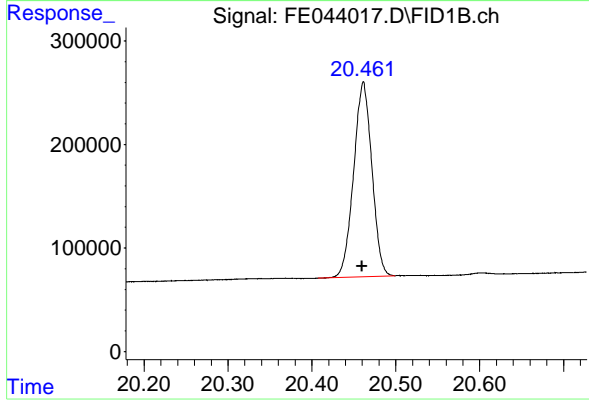
#18 n-Dotriacontane (C32)

R.T.: 18.935 min
Delta R.T.: 0.000 min
Response: 2979609
Conc: 18.87 ug/ml



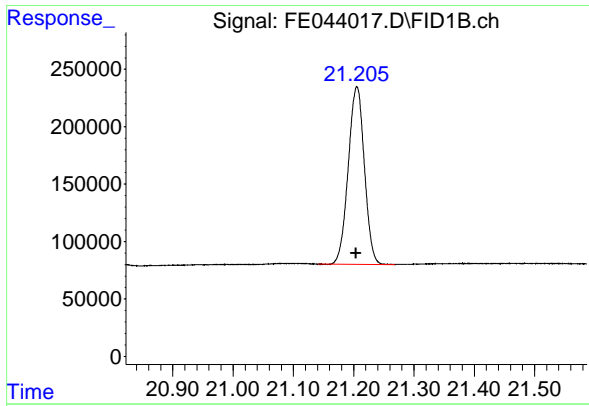
#19 n-Tetraatriacontane (C34)

R.T.: 19.720 min
Delta R.T.: 0.001 min
Response: 2896451
Conc: 19.49 ug/ml



#20 n-Hexatriacontane (C36)

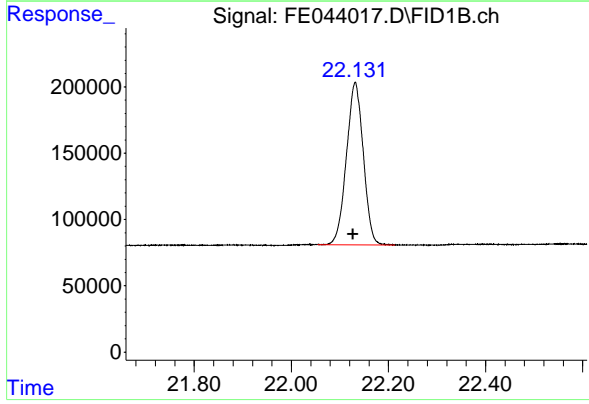
R.T.: 20.461 min
Delta R.T.: 0.002 min
Response: 2839615
Conc: 20.32 ug/ml



#21 n-Octatriacontane (C38)

R.T.: 21.205 min
Delta R.T.: 0.002 min
Response: 2874498
Conc: 21.55 ug/ml

Instrument :
FID_E
ClientSampleId :
20 PPM ALIPHATIC HC STD



#22 n-Tetracontane (C40)

R.T.: 22.132 min
Delta R.T.: 0.005 min
Response: 2952061
Conc: 22.88 ug/ml