

Data Path : Z:\pestpcbsrv\HPCHEM1\FID\_E\Data\FE081822AL\  
 Data File : FE037164.D  
 Signal(s) : FID1B.ch  
 Acq On : 18 Aug 2022 16:24  
 Operator : YP\AJ  
 Sample : N4227-05  
 Misc :  
 ALS Vial : 13 Sample Multiplier: 1

Instrument :  
 FID\_E  
 ClientSampleId :  
 SP-1C

Integration File: autoint1.e  
 Quant Time: Aug 18 17:45:43 2022  
 Quant Method : Z:\pestpcbsrv\HPCHEM1\FID\_E\methods\Aliphatic EPH 081222.M  
 Quant Title : GC Extractables  
 QLast Update : Fri Aug 12 07:36:15 2022  
 Response via : Initial Calibration  
 Integrator: ChemStation

Volume Inj. : 1 ul  
 Signal Phase : Rxi-1ms  
 Signal Info : 20M x 0.18mm x 0.18um

Compound	R.T.	Response	Conc Units
-----			
System Monitoring Compounds			
9) S ortho-Terphenyl (SURR)	11.820	9773820	53.137 ug/ml
Spiked Amount	50.000	Recovery	= 106.27%
12) S 1-chlorooctadecane (S...	13.258	7647676	52.400 ug/ml
Spiked Amount	50.000	Recovery	= 104.80%

Target Compounds

(f)=RT Delta > 1/2 Window

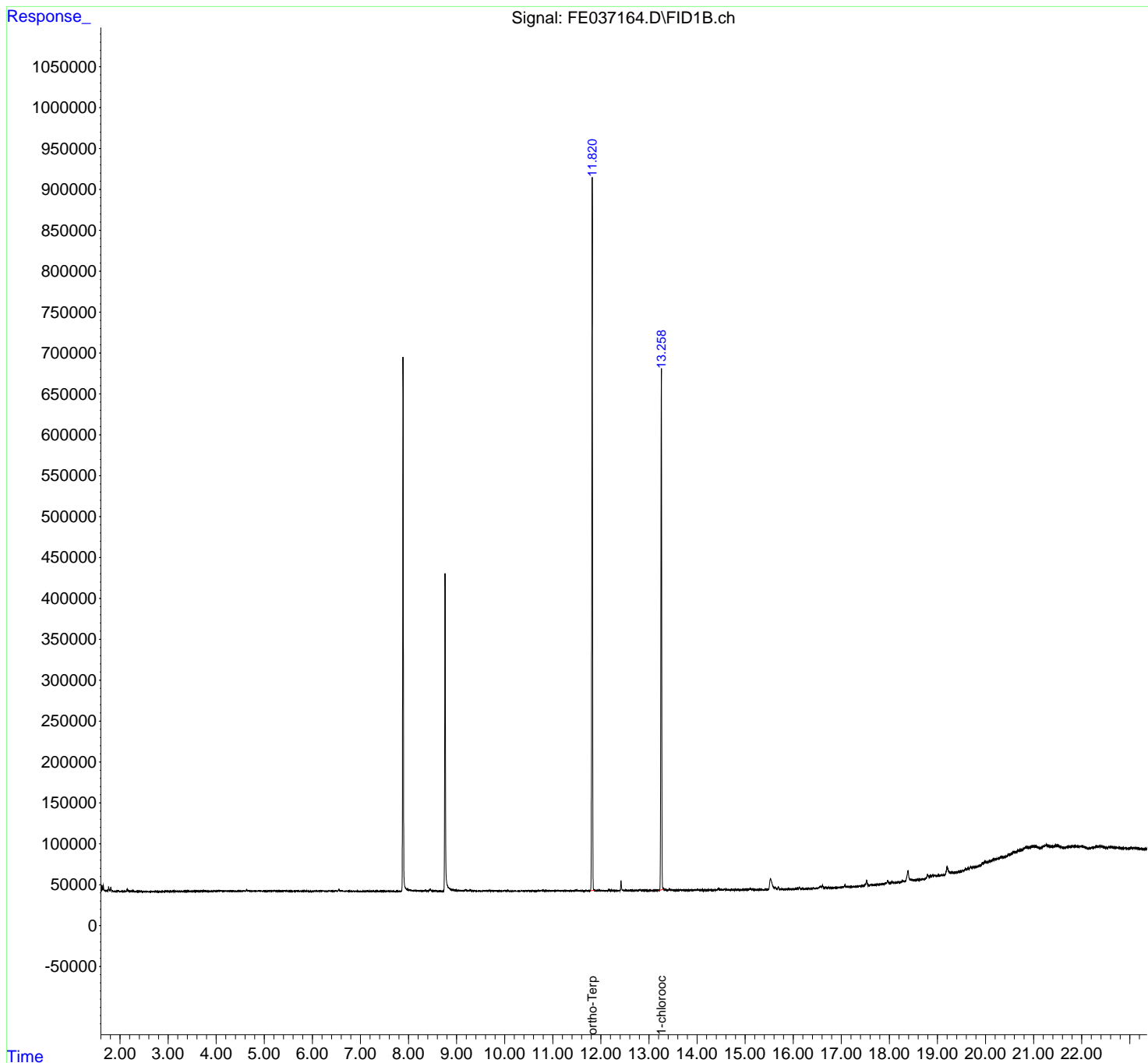
(m)=manual int.

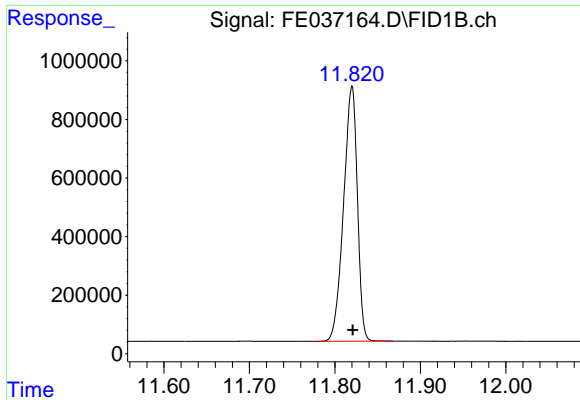
Data Path : Z:\pestpcbsrv\HPCHEM1\FID\_E\Data\FE081822AL\  
 Data File : FE037164.D  
 Signal(s) : FID1B.ch  
 Acq On : 18 Aug 2022 16:24  
 Operator : YP\AJ  
 Sample : N4227-05  
 Misc :  
 ALS Vial : 13 Sample Multiplier: 1

Instrument :  
 FID\_E  
 ClientSampleId :  
 SP-1C

Integration File: autoint1.e  
 Quant Time: Aug 18 17:45:43 2022  
 Quant Method : Z:\pestpcbsrv\HPCHEM1\FID\_E\methods\Aliphatic EPH 081222.M  
 Quant Title : GC Extractables  
 QLast Update : Fri Aug 12 07:36:15 2022  
 Response via : Initial Calibration  
 Integrator: ChemStation

Volume Inj. : 1 ul  
 Signal Phase : Rxi-1ms  
 Signal Info : 20M x 0.18mm x 0.18um

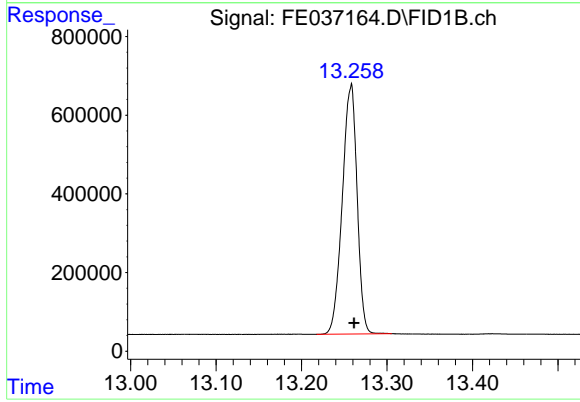




#9 ortho-Terphenyl (SURR)

R.T.: 11.820 min  
 Delta R.T.: 0.000 min  
 Response: 9773820  
 Conc: 53.14 ug/ml

Instrument :  
 FID\_E  
 ClientSampleId :  
 SP-1C



#12 1-chlorooctadecane (SURR)

R.T.: 13.258 min  
 Delta R.T.: -0.003 min  
 Response: 7647676  
 Conc: 52.40 ug/ml