

Data Path : Z:\pestpcbsrv\HPCHEM1\FID\_E\Data\FE081922AL\  
 Data File : FE037186.D  
 Signal(s) : FID1B.ch  
 Acq On : 19 Aug 2022 13:06  
 Operator : YP\AJ  
 Sample : PB146674BL  
 Misc :  
 ALS Vial : 5 Sample Multiplier: 1

Instrument :  
 FID\_E  
 ClientSampleId :

Integration File: autoint1.e  
 Quant Time: Aug 19 16:22:55 2022  
 Quant Method : Z:\pestpcbsrv\HPCHEM1\FID\_E\methods\Aliphatic EPH 081222.M  
 Quant Title : GC Extractables  
 QLast Update : Fri Aug 12 07:36:15 2022  
 Response via : Initial Calibration  
 Integrator: ChemStation

Volume Inj. : 1 ul  
 Signal Phase : Rxi-1ms  
 Signal Info : 20M x 0.18mm x 0.18um

Compound	R.T.	Response	Conc Units
-----			
System Monitoring Compounds			
12) S 1-chlorooctadecane (S...	13.249	4169243	28.567 ug/ml
Spiked Amount	50.000	Recovery	= 57.13%

Target Compounds

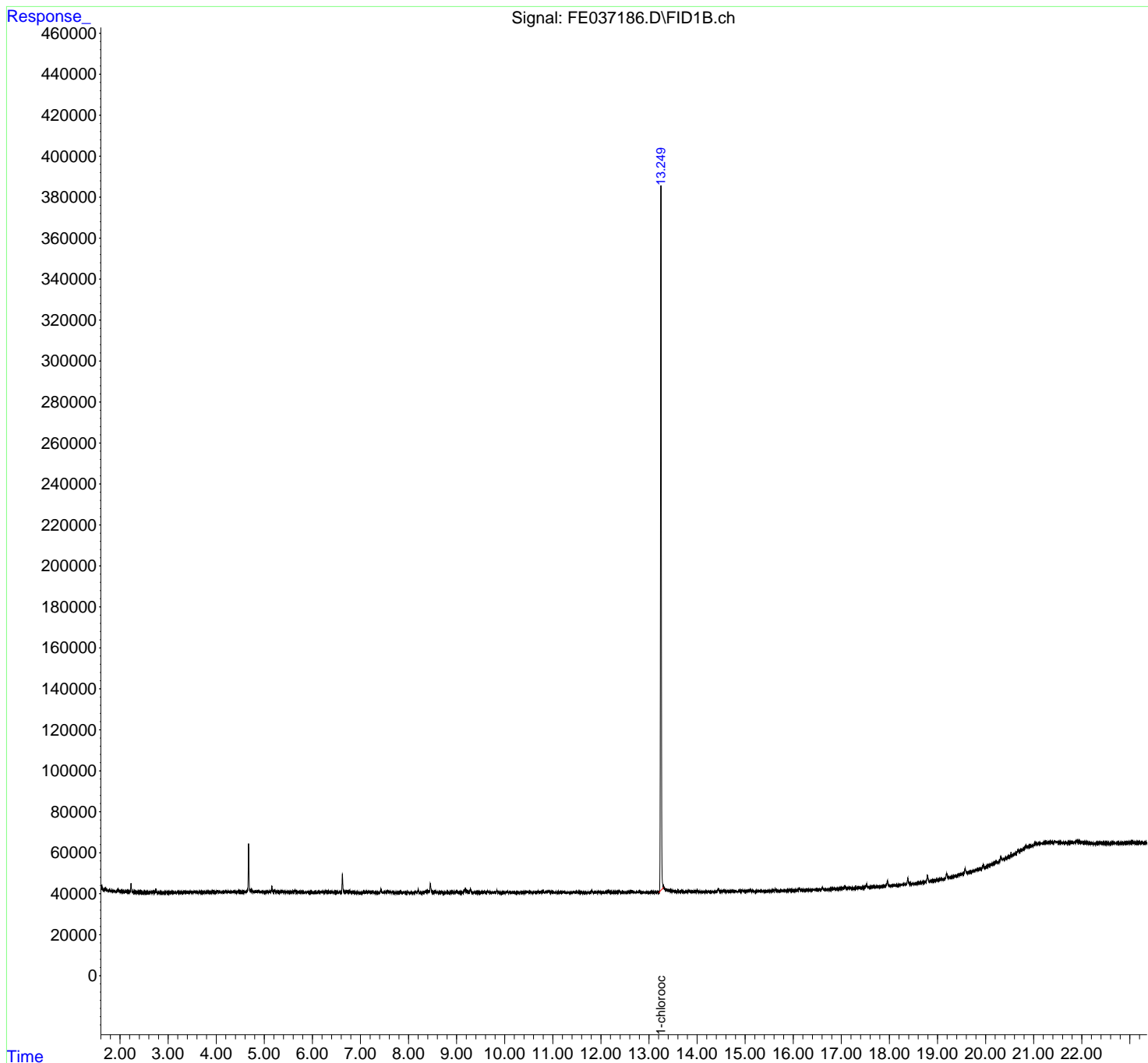
(f)=RT Delta > 1/2 Window (m)=manual int.

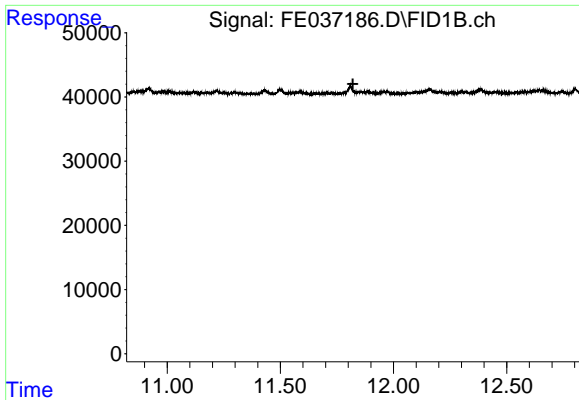
Data Path : Z:\pestpcbsrv\HPCHEM1\FID\_E\Data\FE081922AL\  
Data File : FE037186.D  
Signal(s) : FID1B.ch  
Acq On : 19 Aug 2022 13:06  
Operator : YP\AJ  
Sample : PB146674BL  
Misc :  
ALS Vial : 5 Sample Multiplier: 1

Instrument :  
FID\_E  
ClientSampleId :

Integration File: autoint1.e  
Quant Time: Aug 19 16:22:55 2022  
Quant Method : Z:\pestpcbsrv\HPCHEM1\FID\_E\methods\Aliphatic EPH 081222.M  
Quant Title : GC Extractables  
QLast Update : Fri Aug 12 07:36:15 2022  
Response via : Initial Calibration  
Integrator: ChemStation

Volume Inj. : 1 ul  
Signal Phase : Rxi-1ms  
Signal Info : 20M x 0.18mm x 0.18um

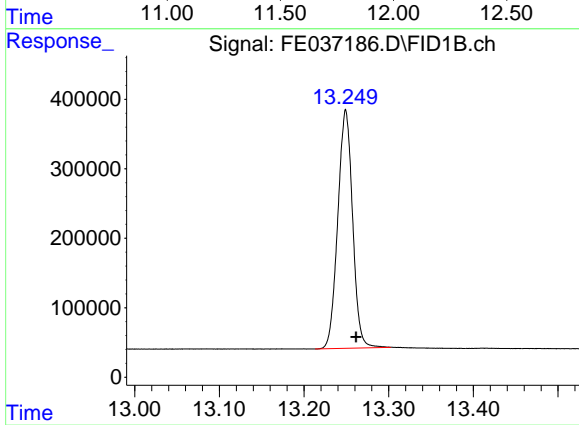




#9 ortho-Terphenyl (SURR)

R.T.: 0.000 min  
Exp R.T.: 11.821 min  
Response: 0  
Conc: N.D.

Instrument :  
FID\_E  
ClientSampleId :



#12 1-chlorooctadecane (SURR)

R.T.: 13.249 min  
Delta R.T.: -0.012 min  
Response: 4169243  
Conc: 28.57 ug/ml