

Data Path : Z:\pestpcbsrv\HPCHEM1\FID_E\Data\FE082422AL\
 Data File : FE037238.D
 Signal(s) : FID1B.ch
 Acq On : 24 Aug 2022 23:38
 Operator : YP\AJ
 Sample : N4327-03
 Misc :
 ALS Vial : 20 Sample Multiplier: 1

Instrument :
 FID_E
 ClientSampleId :

Integration File: autoint1.e
 Quant Time: Aug 25 02:00:37 2022
 Quant Method : Z:\pestpcbsrv\HPCHEM1\FID_D\methods\Aliphatic EPH 082322.M
 Quant Title : GC Extractables
 QLast Update : Thu Aug 25 01:38:38 2022
 Response via : Initial Calibration
 Integrator: ChemStation

Volume Inj. : 1 ul
 Signal Phase : Rxi-1ms
 Signal Info : 20M x 0.18mm x 0.18um

Compound	R.T.	Response	Conc Units

System Monitoring Compounds			
9) S ortho-Terphenyl (SURR)	11.670	3996019	23.122 ug/ml
Spiked Amount	50.000	Recovery	= 46.24%
12) S 1-chlorooctadecane (S...	13.143	107460	0.786 ug/ml
Spiked Amount	50.000	Recovery	= 1.57%
Target Compounds			
14) T n-Tetracosane (C24)	14.934	52695	0.319 ug/ml
16) T n-Octacosane (C28)	16.948	232415	1.464 ug/ml
17) T n-Tricontane (C30)	17.856	140498	0.905 ug/ml
18) T n-Dotriacontane (C32)	18.626	265228	1.778 ug/ml
19) T n-Tetraatriacontane (C34)	19.402	80651	0.600 ug/ml
20) T n-Hexatriacontane (C36)	20.169	89283	0.695 ug/ml
21) T n-Octatriacontane (C38)	20.829	48344	0.403 ug/ml

(f)=RT Delta > 1/2 Window

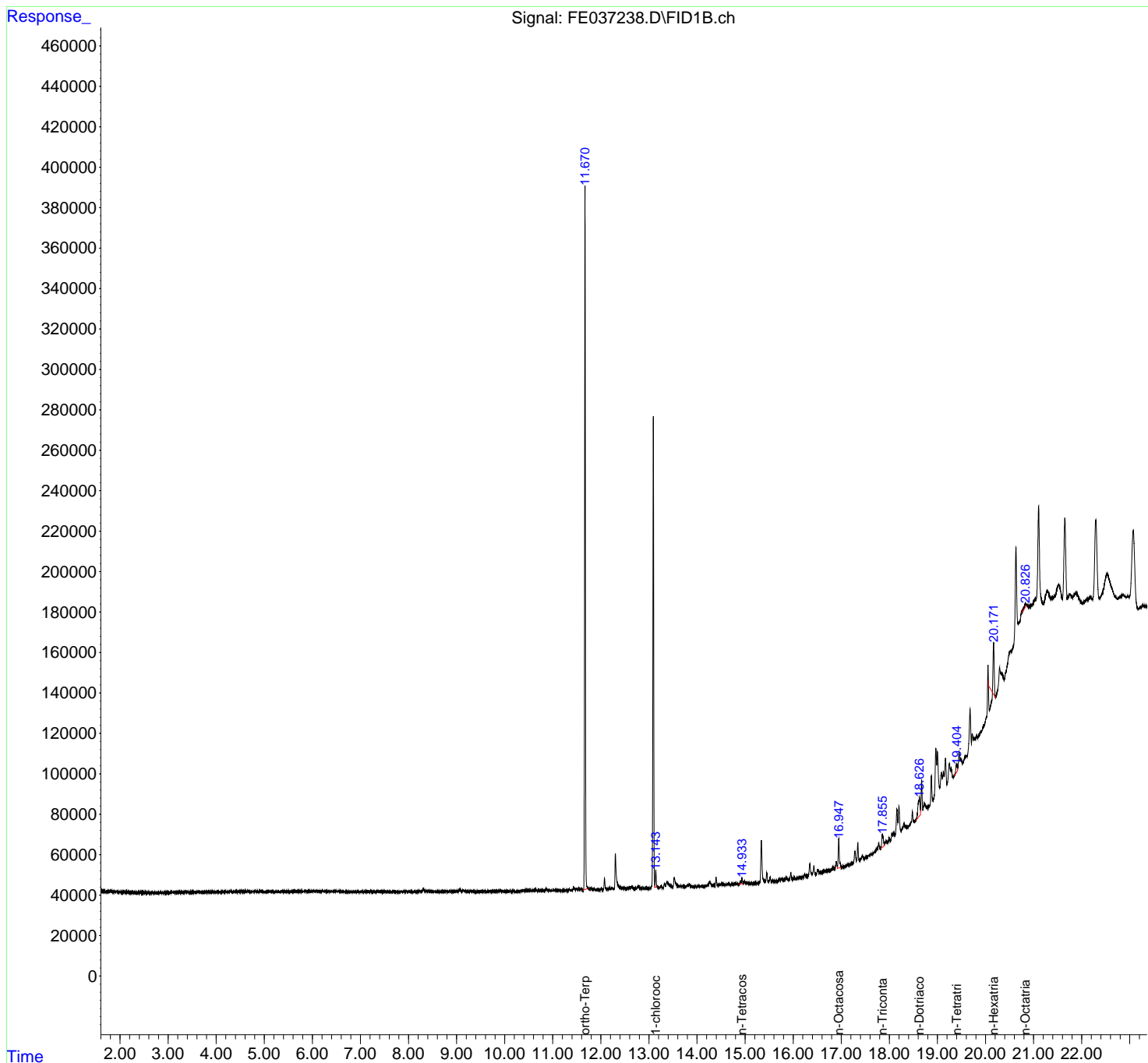
(m)=manual int.

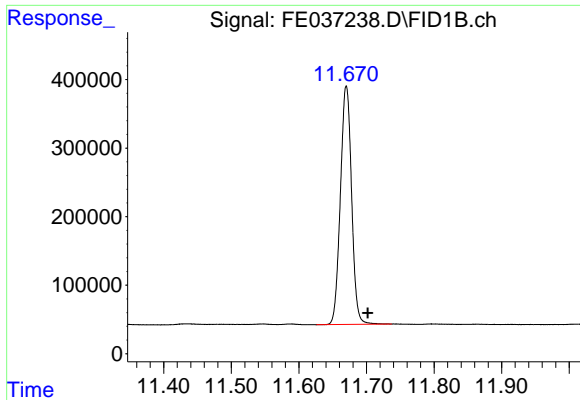
Data Path : Z:\pestpcbsrv\HPCHEM1\FID_E\Data\FE082422AL\
 Data File : FE037238.D
 Signal(s) : FID1B.ch
 Acq On : 24 Aug 2022 23:38
 Operator : YP\AJ
 Sample : N4327-03
 Misc :
 ALS Vial : 20 Sample Multiplier: 1

Instrument :
 FID_E
 ClientSampleId :

Integration File: autoint1.e
 Quant Time: Aug 25 02:00:37 2022
 Quant Method : Z:\pestpcbsrv\HPCHEM1\FID_D\methods\Aliphatic EPH 082322.M
 Quant Title : GC Extractables
 QLast Update : Thu Aug 25 01:38:38 2022
 Response via : Initial Calibration
 Integrator: ChemStation

Volume Inj. : 1 ul
 Signal Phase : Rxi-1ms
 Signal Info : 20M x 0.18mm x 0.18um

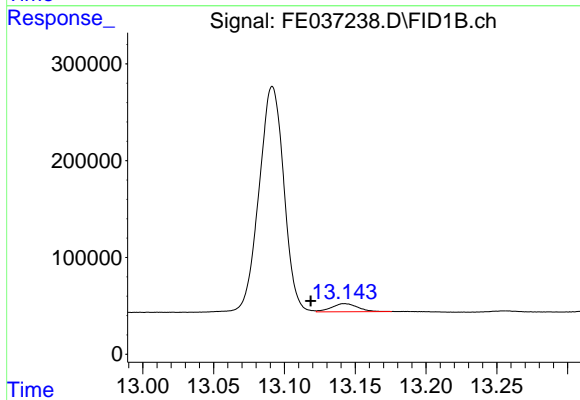




#9 ortho-Terphenyl (SURR)

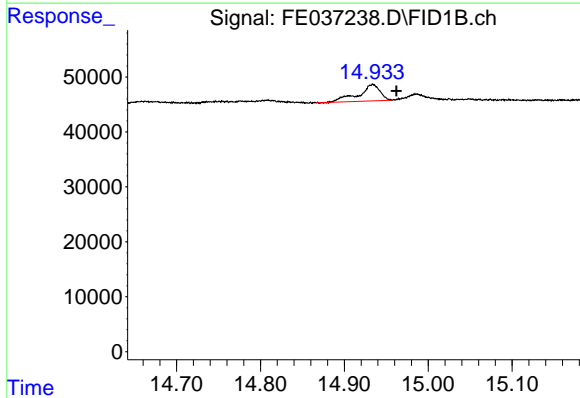
R.T.: 11.670 min
 Delta R.T.: -0.032 min
 Response: 3996019
 Conc: 23.12 ug/ml

Instrument :
 FID_E
 ClientSampleId :



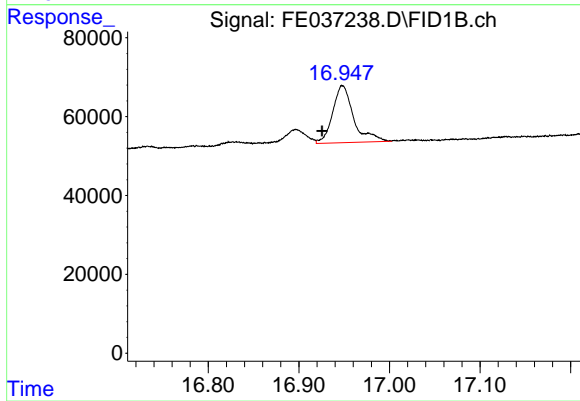
#12 1-chlorooctadecane (SURR)

R.T.: 13.143 min
 Delta R.T.: 0.024 min
 Response: 107460
 Conc: 0.79 ug/ml



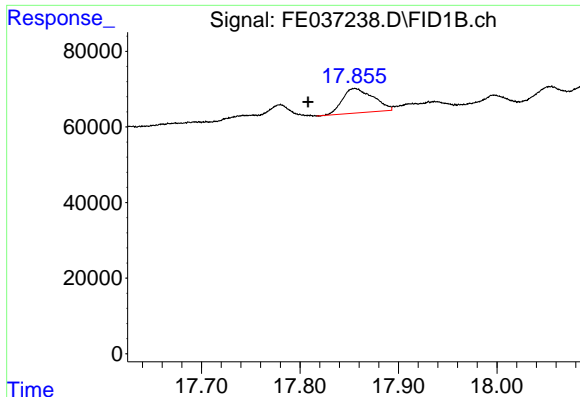
#14 n-Tetracosane (C24)

R.T.: 14.934 min
 Delta R.T.: -0.028 min
 Response: 52695
 Conc: 0.32 ug/ml



#16 n-Octacosane (C28)

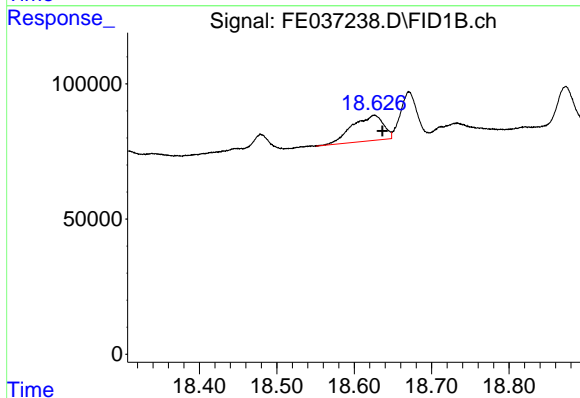
R.T.: 16.948 min
 Delta R.T.: 0.022 min
 Response: 232415
 Conc: 1.46 ug/ml



#17 n-Tricontane (C30)

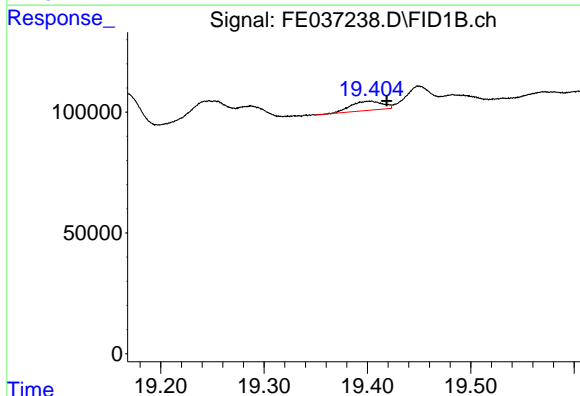
R.T.: 17.856 min
 Delta R.T.: 0.048 min
 Response: 140498
 Conc: 0.90 ug/ml

Instrument :
 FID_E
 ClientSampleId :



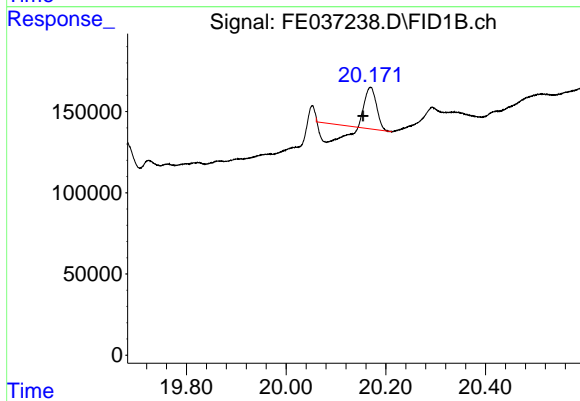
#18 n-Dotriacontane (C32)

R.T.: 18.626 min
 Delta R.T.: -0.010 min
 Response: 265228
 Conc: 1.78 ug/ml



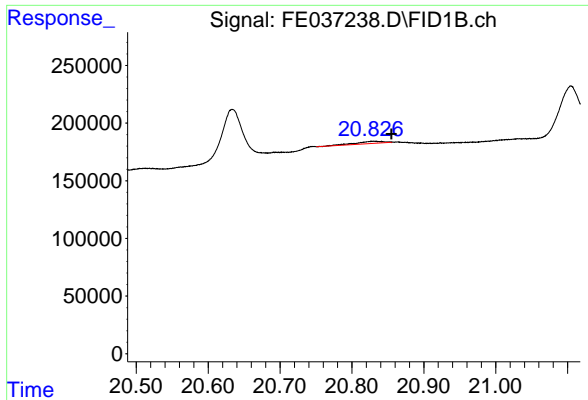
#19 n-Tetratriacontane (C34)

R.T.: 19.402 min
 Delta R.T.: -0.017 min
 Response: 80651
 Conc: 0.60 ug/ml



#20 n-Hexatriacontane (C36)

R.T.: 20.169 min
 Delta R.T.: 0.015 min
 Response: 89283
 Conc: 0.70 ug/ml



#21 n-Octatriacontane (C38)

R.T.: 20.829 min
Delta R.T.: -0.026 min
Response: 48344
Conc: 0.40 ug/ml

Instrument :
FID_E
ClientSampleId :