

Data Path : Z:\pestpcbsrv\HPCHEM1\FID_E\Data\FE082724AL\
 Data File : FE049778.D
 Signal(s) : FID1B.ch
 Acq On : 27 Aug 2024 12:57
 Operator : YP\AJ
 Sample : 20 PPM ALIPHATIC HC STD
 Misc :
 ALS Vial : 3 Sample Multiplier: 1

Instrument :
 FID_E
ClientSampleId :
 20 PPM ALIPHATIC HC STD

Manual Integrations
APPROVED

Reviewed By :Yogesh Patel 08/28/2024
 Supervised By :Ankita Jodhani 08/28/2024

Integration File: autoint1.e
 Quant Time: Aug 28 01:30:31 2024
 Quant Method : Z:\pestpcbsrv\HPCHEM1\FID_E\methods\Aliphatic EPH 081424.M
 Quant Title : GC Extractables
 QLast Update : Wed Aug 14 11:05:17 2024
 Response via : Initial Calibration
 Integrator: ChemStation

Volume Inj. : 1 ul
 Signal Phase : Rxi-1ms
 Signal Info : 20M x 0.18mm x 0.18um

Compound	R.T.	Response	Conc Units

System Monitoring Compounds			
9) S ortho-Terphenyl (SURR)	11.885	3033143	18.757 ug/ml
Spiked Amount	50.000	Recovery =	37.51%
12) S 1-chlorooctadecane (S...	13.321	2309072	18.926 ug/ml
Spiked Amount	50.000	Recovery =	37.85%
Target Compounds			
1) T n-Nonane (C9)	3.273	2750363	17.772 ug/ml
2) T n-Decane (C10)	4.524	2826341	17.901 ug/ml
3) T A~Naphthalene (C11.7)	6.232	2939689	18.321 ug/ml
4) T n-Dodecane (C12)	6.692	2867870	18.242 ug/ml
5) T A~2-methylnaphthalene...	7.328	2790793	18.636 ug/ml
6) T n-Tetradecane (C14)	8.519	2839483	18.393 ug/ml
7) T n-Hexadecane (C16)	10.125	2913898	18.657 ug/ml
8) T n-Octadecane (C18)	11.567	2935163	18.689 ug/ml
10) T n-Eicosane (C20)	12.876	2814809	18.853 ug/ml
11) T n-Heneicosane (C21)	13.487	2760677	18.819 ug/ml
13) T n-Docosane (C22)	14.072	2737534	18.782 ug/ml
14) T n-Tetracosane (C24)	15.173	2742401	18.853 ug/ml
15) T n-Hexacosane (C26)	16.194	2703605	18.733 ug/ml
16) T n-Octacosane (C28)	17.142	2765693	19.201 ug/ml
17) T n-Tricontane (C30)	18.029	2969646	19.837 ug/ml
18) T n-Dotriacontane (C32)	18.860	3088125	20.413 ug/ml
19) T n-Tetratriacontane (C34)	19.643	3116753	20.387 ug/ml
20) T n-Hexatriacontane (C36)	20.383	3034791	19.985 ug/ml
21) T n-Octatriacontane (C38)	21.111	2984240	19.014 ug/ml
22) T n-Tetracontane (C40)	22.006	2847368	18.649 ug/ml

(f)=RT Delta > 1/2 Window

(m)=manual int.

Data Path : Z:\pestpcbsrv\HPCHEM1\FID_E\Data\FE082724AL\
 Data File : FE049778.D
 Signal(s) : FID1B.ch
 Acq On : 27 Aug 2024 12:57
 Operator : YP\AJ
 Sample : 20 PPM ALIPHATIC HC STD
 Misc :
 ALS Vial : 3 Sample Multiplier: 1

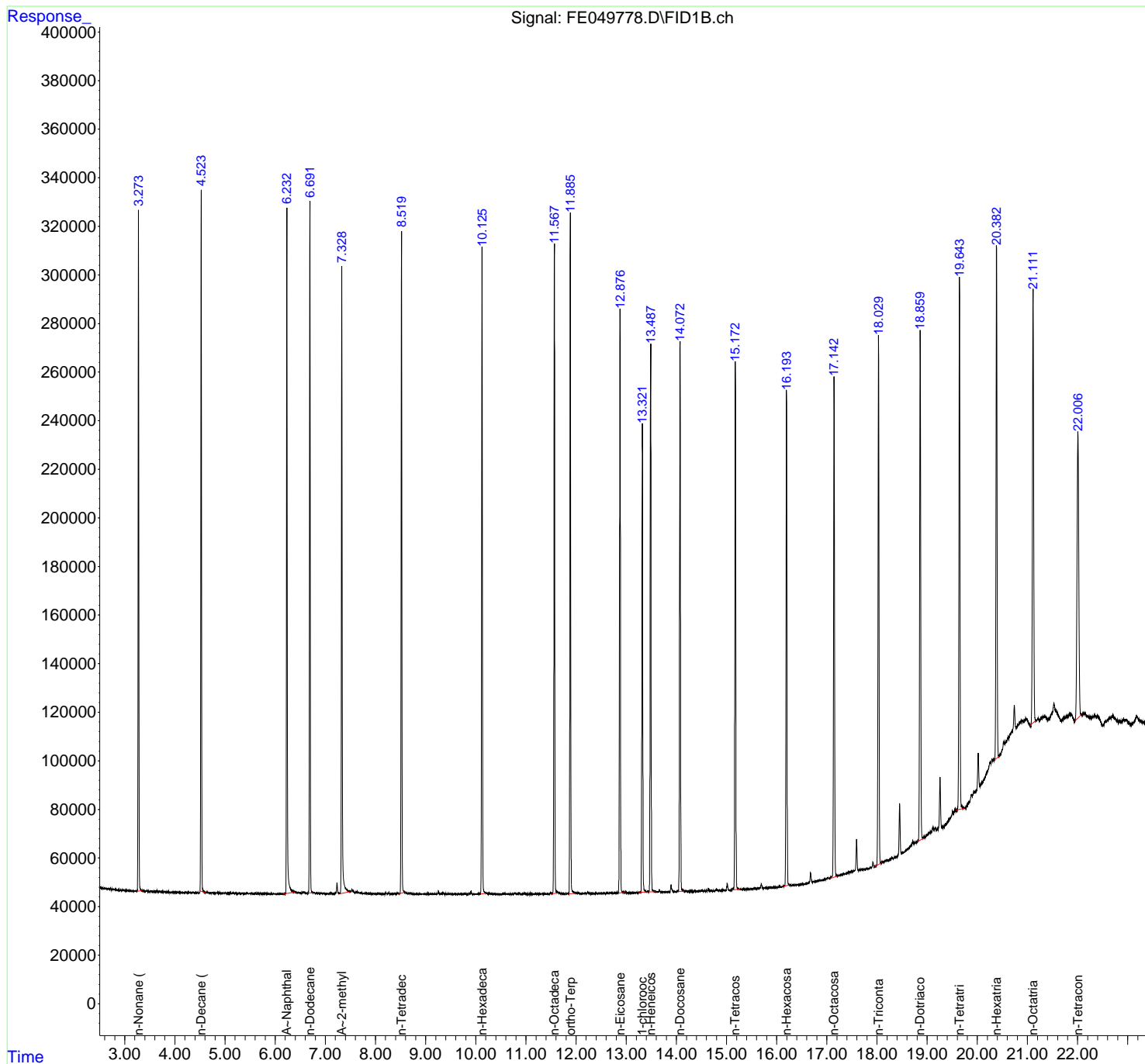
Instrument :
 FID_E
ClientSampleId :
 20 PPM ALIPHATIC HC STD

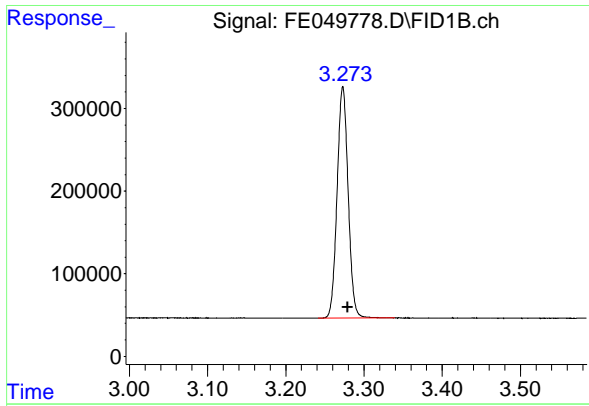
Manual Integrations
APPROVED

Reviewed By :Yogesh Patel 08/28/2024
 Supervised By :Ankita Jodhani 08/28/2024

Integration File: autoint1.e
 Quant Time: Aug 28 01:30:31 2024
 Quant Method : Z:\pestpcbsrv\HPCHEM1\FID_E\methods\Aliphatic EPH 081424.
 Quant Title : GC Extractables
 QLast Update : Wed Aug 14 11:05:17 2024
 Response via : Initial Calibration
 Integrator: ChemStation

Volume Inj. : 1 ul
 Signal Phase : Rxi-1ms
 Signal Info : 20M x 0.18mm x 0.18um





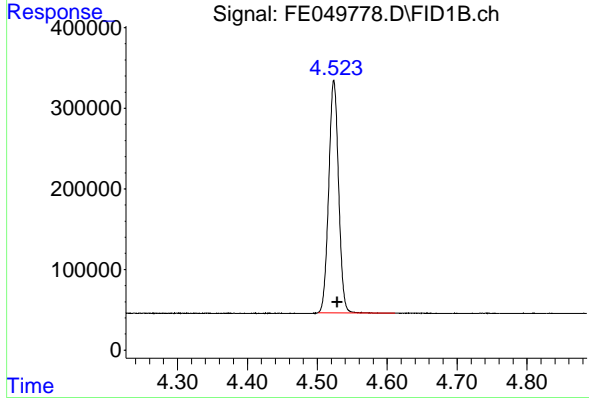
#1 n-Nonane (C9)

R.T.: 3.273 min
 Delta R.T.: -0.006 min
 Response: 2750363
 Conc: 17.77 ug/ml

Instrument : FID_E
 Client Sample Id : 20 PPM ALIPHATIC HC STD

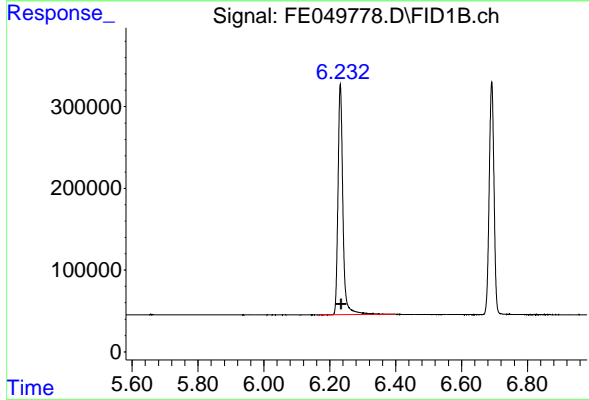
Manual Integrations
 APPROVED

Reviewed By :Yogesh Patel 08/28/2024
 Supervised By :Ankita Jodhani 08/28/2024



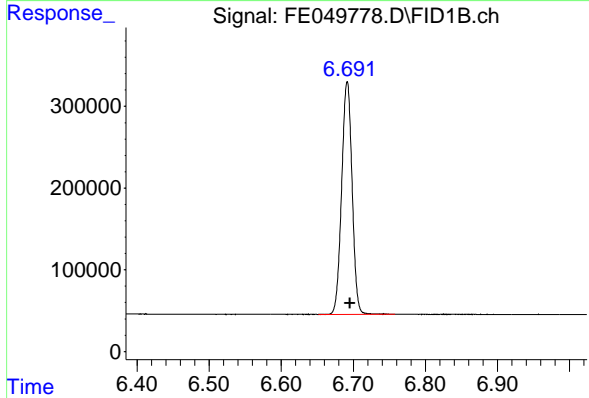
#2 n-Decane (C10)

R.T.: 4.524 min
 Delta R.T.: -0.005 min
 Response: 2826341
 Conc: 17.90 ug/ml



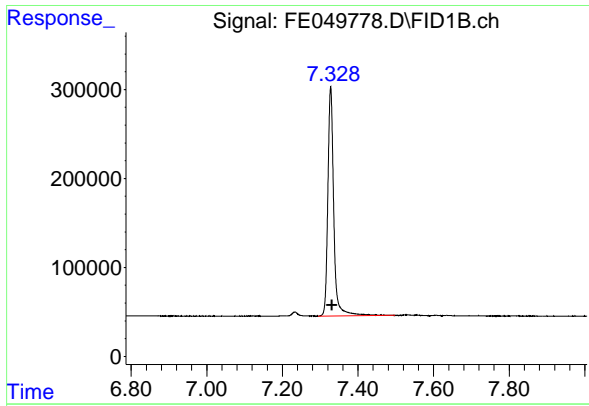
#3 A~Naphthalene (C11.7)

R.T.: 6.232 min
 Delta R.T.: -0.003 min
 Response: 2939689
 Conc: 18.32 ug/ml



#4 n-Dodecane (C12)

R.T.: 6.692 min
 Delta R.T.: -0.004 min
 Response: 2867870
 Conc: 18.24 ug/ml



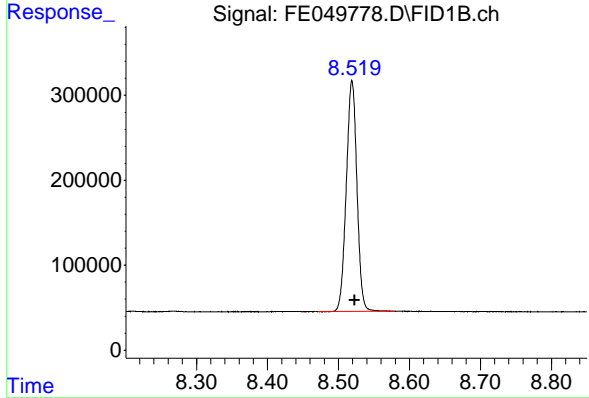
#5 A~2-methylnaphthalene (C12.89)

R.T.: 7.328 min
 Delta R.T.: -0.003 min
 Response: 2790793
 Conc: 18.64 ug/ml

Instrument : FID_E
 ClientSampleId : 20 PPM ALIPHATIC HC STD

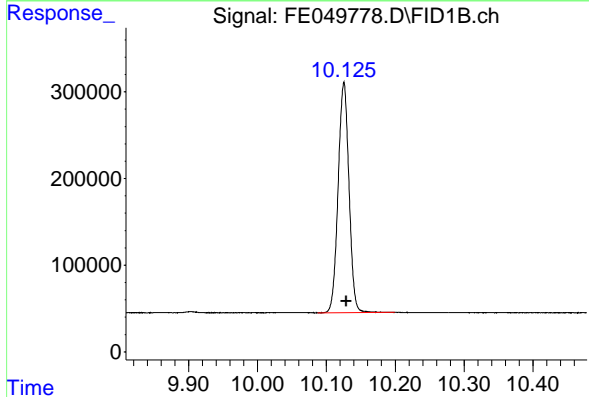
Manual Integrations
 APPROVED

Reviewed By :Yogesh Patel 08/28/2024
 Supervised By :Ankita Jodhani 08/28/2024



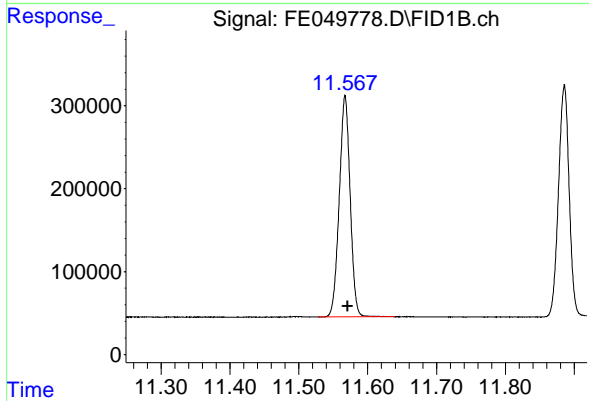
#6 n-Tetradecane (C14)

R.T.: 8.519 min
 Delta R.T.: -0.003 min
 Response: 2839483
 Conc: 18.39 ug/ml



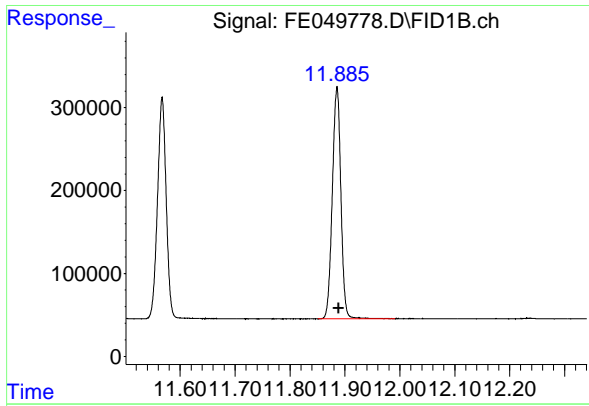
#7 n-Hexadecane (C16)

R.T.: 10.125 min
 Delta R.T.: -0.004 min
 Response: 2913898
 Conc: 18.66 ug/ml



#8 n-Octadecane (C18)

R.T.: 11.567 min
 Delta R.T.: -0.003 min
 Response: 2935163
 Conc: 18.69 ug/ml



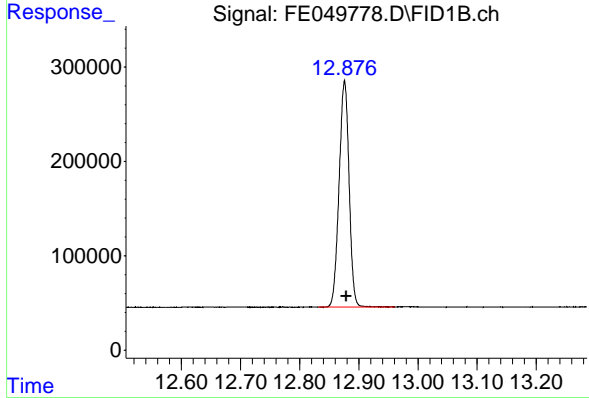
#9 ortho-Terphenyl (SURR)

R.T.: 11.885 min
 Delta R.T.: -0.003 min
 Response: 3033143
 Conc: 18.76 ug/ml

Instrument : FID_E
 Client Sample Id : 20 PPM ALIPHATIC HC STD

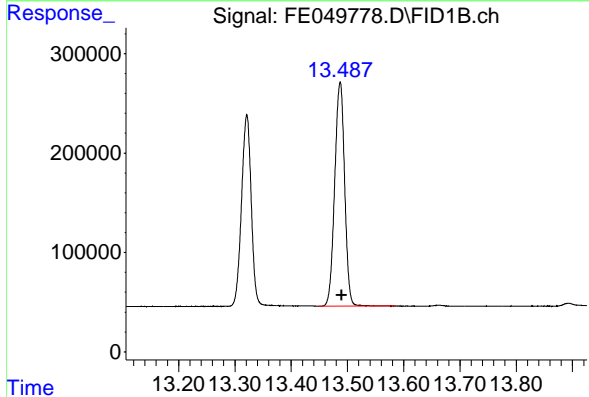
Manual Integrations
 APPROVED

Reviewed By :Yogesh Patel 08/28/2024
 Supervised By :Ankita Jodhani 08/28/2024



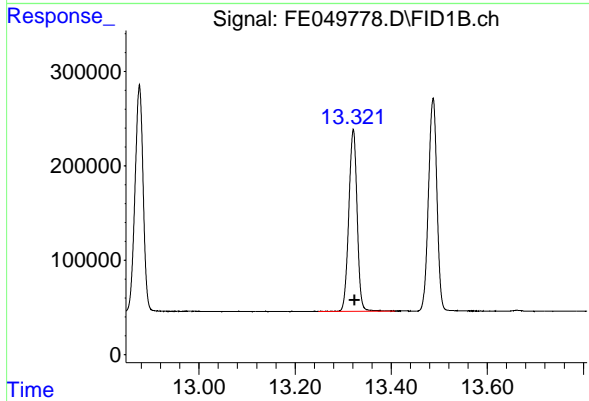
#10 n-Eicosane (C20)

R.T.: 12.876 min
 Delta R.T.: -0.003 min
 Response: 2814809
 Conc: 18.85 ug/ml



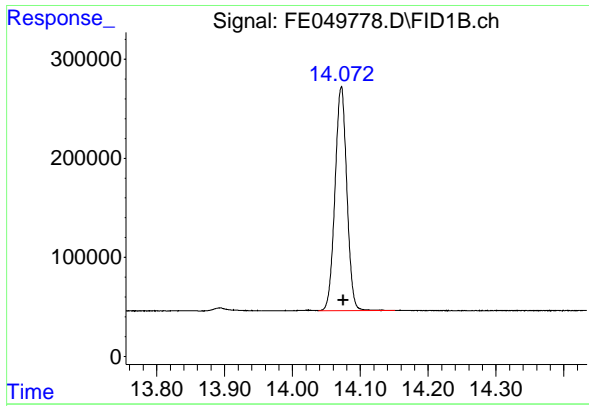
#11 n-Heneicosane (C21)

R.T.: 13.487 min
 Delta R.T.: -0.003 min
 Response: 2760677
 Conc: 18.82 ug/ml



#12 1-chlorooctadecane (SURR)

R.T.: 13.321 min
 Delta R.T.: -0.002 min
 Response: 2309072
 Conc: 18.93 ug/ml



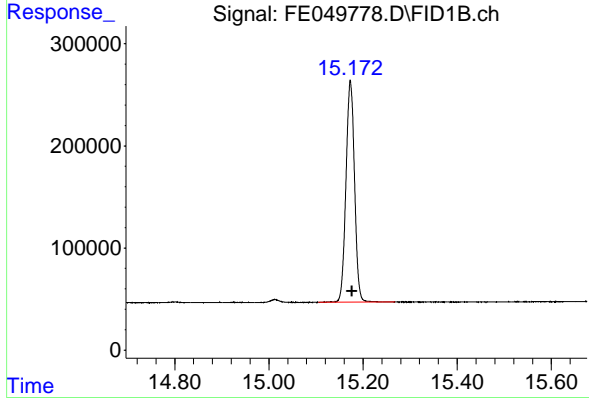
#13 n-Docosane (C22)

R.T.: 14.072 min
 Delta R.T.: -0.003 min
 Response: 2737534
 Conc: 18.78 ug/ml

Instrument : FID_E
 ClientSampleId : 20 PPM ALIPHATIC HC STD

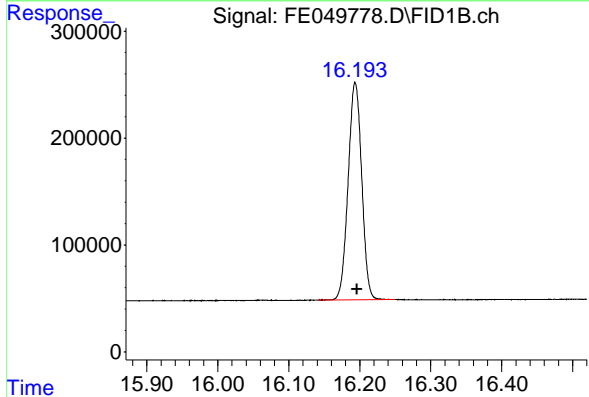
Manual Integrations
 APPROVED

Reviewed By :Yogesh Patel 08/28/2024
 Supervised By :Ankita Jodhani 08/28/2024



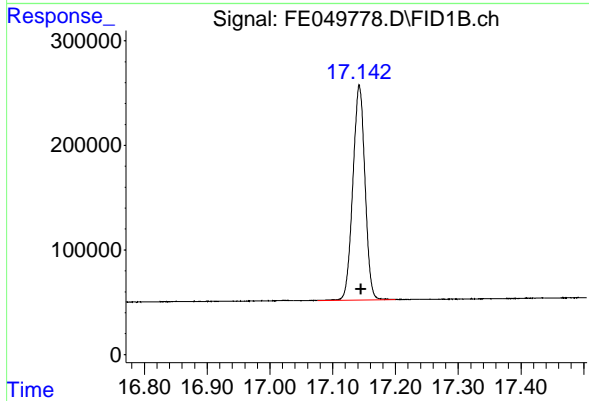
#14 n-Tetracosane (C24)

R.T.: 15.173 min
 Delta R.T.: -0.004 min
 Response: 2742401
 Conc: 18.85 ug/ml



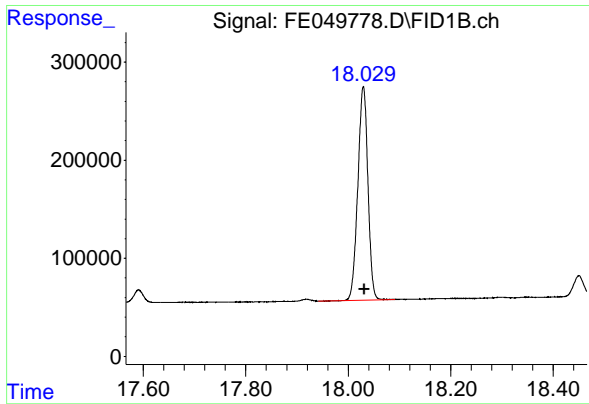
#15 n-Hexacosane (C26)

R.T.: 16.194 min
 Delta R.T.: -0.003 min
 Response: 2703605
 Conc: 18.73 ug/ml



#16 n-Octacosane (C28)

R.T.: 17.142 min
 Delta R.T.: -0.003 min
 Response: 2765693
 Conc: 19.20 ug/ml m



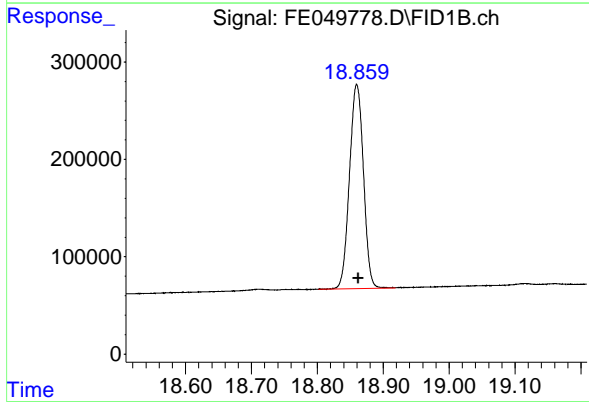
#17 n-Tricontane (C30)

R.T.: 18.029 min
Delta R.T.: -0.002 min
Response: 2969646
Conc: 19.84 ug/ml

Instrument : FID_E
ClientSampleId : 20 PPM ALIPHATIC HC STD

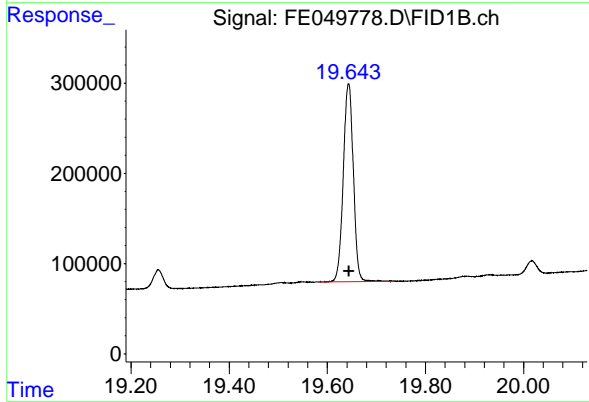
Manual Integrations
APPROVED

Reviewed By :Yogesh Patel 08/28/2024
Supervised By :Ankita Jodhani 08/28/2024



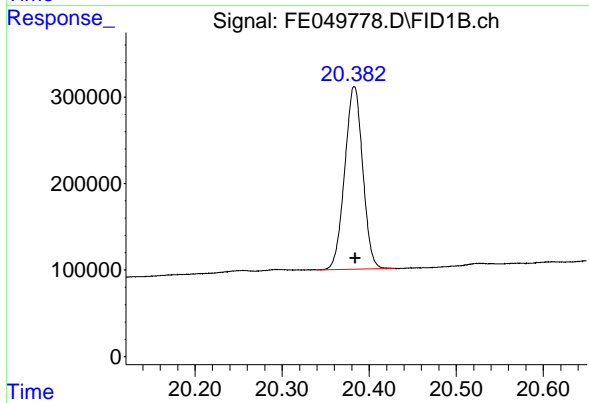
#18 n-Dotriacontane (C32)

R.T.: 18.860 min
Delta R.T.: -0.002 min
Response: 3088125
Conc: 20.41 ug/ml



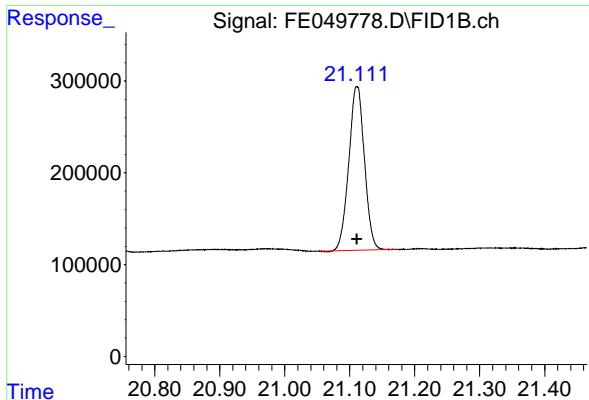
#19 n-Tetracontane (C34)

R.T.: 19.643 min
Delta R.T.: -0.001 min
Response: 3116753
Conc: 20.39 ug/ml



#20 n-Hexatriacontane (C36)

R.T.: 20.383 min
Delta R.T.: -0.001 min
Response: 3034791
Conc: 19.99 ug/ml



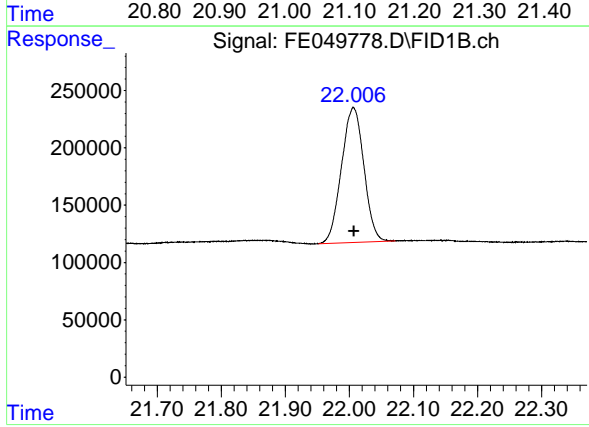
#21 n-Octatriacontane (C38)

R.T.: 21.111 min
 Delta R.T.: 0.000 min
 Response: 2984240
 Conc: 19.01 ug/ml

Instrument : FID_E
 ClientSampleId : 20 PPM ALIPHATIC HC STD

Manual Integrations
 APPROVED

Reviewed By :Yogesh Patel 08/28/2024
 Supervised By :Ankita Jodhani 08/28/2024



#22 n-Tetracontane (C40)

R.T.: 22.006 min
 Delta R.T.: 0.000 min
 Response: 2847368
 Conc: 18.65 ug/ml