

Data Path : Z:\pestpcbsrv\HPCHEM1\FID_E\Data\FE082724AL\
 Data File : FE049806.D
 Signal(s) : FID1B.ch
 Acq On : 28 Aug 2024 05:51
 Operator : YP\AJ
 Sample : P3739-14
 Misc :
 ALS Vial : 31 Sample Multiplier: 1

Instrument :
 FID_E
ClientSampleId :
 WC-3-EPH

Integration File: autoint1.e
 Quant Time: Aug 28 07:26:17 2024
 Quant Method : Z:\pestpcbsrv\HPCHEM1\FID_E\methods\Aliphatic EPH 081424.M
 Quant Title : GC Extractables
 QLast Update : Wed Aug 14 11:05:17 2024
 Response via : Initial Calibration
 Integrator: ChemStation

Volume Inj. : 1 ul
 Signal Phase : Rxi-1ms
 Signal Info : 20M x 0.18mm x 0.18um

Compound	R.T.	Response	Conc Units
System Monitoring Compounds			
9) S ortho-Terphenyl (SURR)	11.884	6617095	40.919 ug/ml
Spiked Amount	50.000	Recovery	= 81.84%
12) S 1-chlorooctadecane (S...	13.319	5571519	45.666 ug/ml
Spiked Amount	50.000	Recovery	= 91.33%

Target Compounds

(f)=RT Delta > 1/2 Window

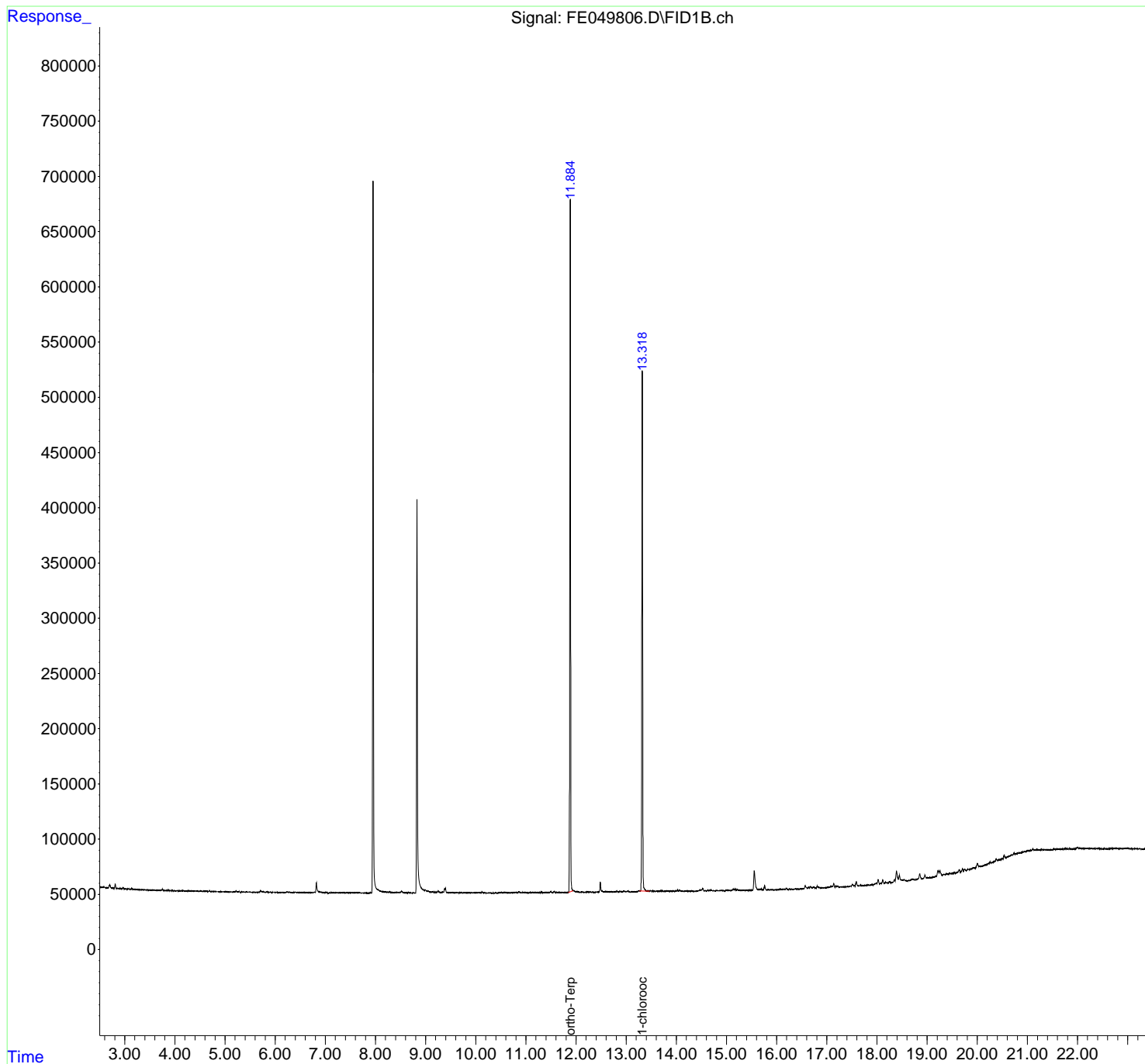
(m)=manual int.

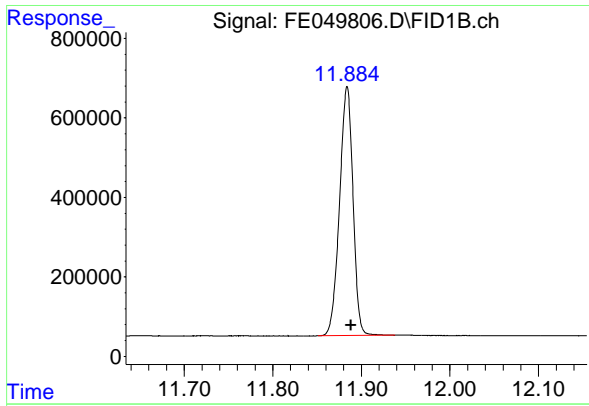
Data Path : Z:\pestpcbsrv\HPCHEM1\FID_E\Data\FE082724AL\
 Data File : FE049806.D
 Signal(s) : FID1B.ch
 Acq On : 28 Aug 2024 05:51
 Operator : YP\AJ
 Sample : P3739-14
 Misc :
 ALS Vial : 31 Sample Multiplier: 1

Instrument :
 FID_E
 ClientSampleId :
 WC-3-EPH

Integration File: autoint1.e
 Quant Time: Aug 28 07:26:17 2024
 Quant Method : Z:\pestpcbsrv\HPCHEM1\FID_E\methods\Aliphatic EPH 081424.M
 Quant Title : GC Extractables
 QLast Update : Wed Aug 14 11:05:17 2024
 Response via : Initial Calibration
 Integrator: ChemStation

Volume Inj. : 1 ul
 Signal Phase : Rxi-1ms
 Signal Info : 20M x 0.18mm x 0.18um

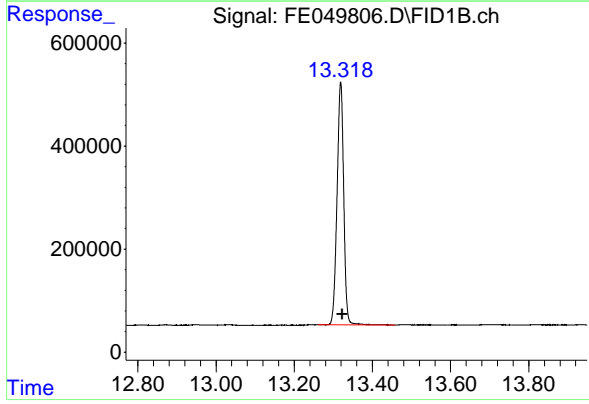




#9 ortho-Terphenyl (SURR)

R.T.: 11.884 min
Delta R.T.: -0.005 min
Response: 6617095
Conc: 40.92 ug/ml

Instrument :
FID_E
ClientSampleId :
WC-3-EPH



#12 1-chlorooctadecane (SURR)

R.T.: 13.319 min
Delta R.T.: -0.005 min
Response: 5571519
Conc: 45.67 ug/ml