

Data Path : Z:\pestpcbsrv\HPCHEM1\FID\_E\Data\FE082724AL\  
 Data File : FE049807.D  
 Signal(s) : FID1B.ch  
 Acq On : 28 Aug 2024 06:52  
 Operator : YP\AJ  
 Sample : I.BLK  
 Misc :  
 ALS Vial : 1 Sample Multiplier: 1

Instrument :  
 FID\_E  
 ClientSampleId :  
 I.BLK

Integration File: autoint1.e  
 Quant Time: Aug 28 07:26:23 2024  
 Quant Method : Z:\pestpcbsrv\HPCHEM1\FID\_E\methods\Aliphatic EPH 081424.M  
 Quant Title : GC Extractables  
 QLast Update : Wed Aug 14 11:05:17 2024  
 Response via : Initial Calibration  
 Integrator: ChemStation

Volume Inj. : 1 ul  
 Signal Phase : Rxi-1ms  
 Signal Info : 20M x 0.18mm x 0.18um

Compound	R.T.	Response	Conc Units
----------	------	----------	------------

-----  
 System Monitoring Compounds

Target Compounds  
 -----

(f)=RT Delta > 1/2 Window

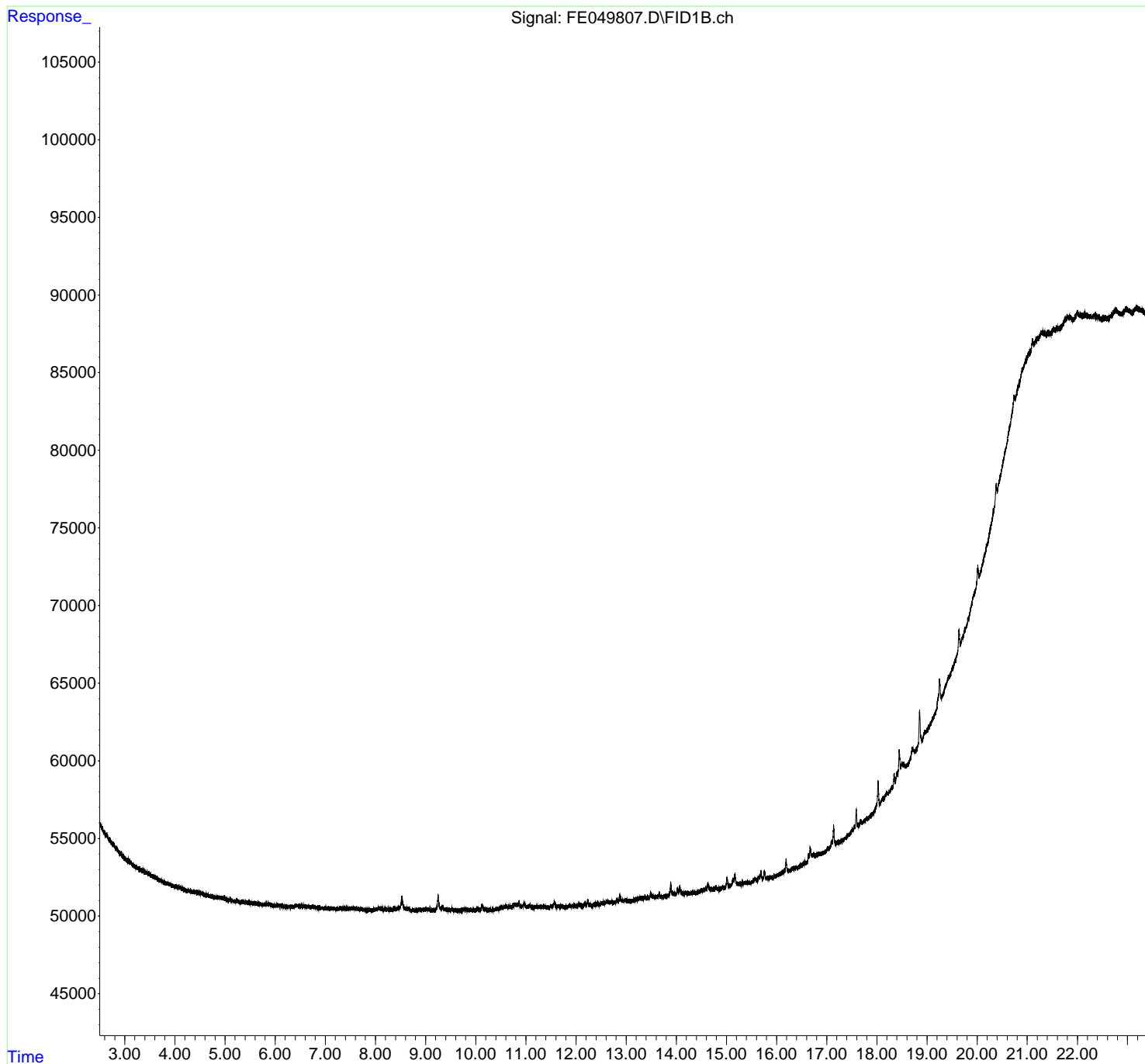
(m)=manual int.

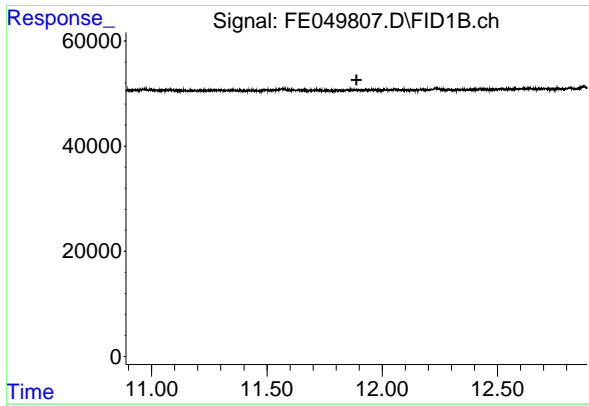
Data Path : Z:\pestpcbsrv\HPCHEM1\FID\_E\Data\FE082724AL\  
Data File : FE049807.D  
Signal(s) : FID1B.ch  
Acq On : 28 Aug 2024 06:52  
Operator : YP\AJ  
Sample : I.BLK  
Misc :  
ALS Vial : 1 Sample Multiplier: 1

Instrument :  
FID\_E  
ClientSampleId :  
I.BLK

Integration File: autoint1.e  
Quant Time: Aug 28 07:26:23 2024  
Quant Method : Z:\pestpcbsrv\HPCHEM1\FID\_E\methods\Aliphatic EPH 081424.M  
Quant Title : GC Extractables  
QLast Update : Wed Aug 14 11:05:17 2024  
Response via : Initial Calibration  
Integrator: ChemStation

Volume Inj. : 1 ul  
Signal Phase : Rxi-1ms  
Signal Info : 20M x 0.18mm x 0.18um

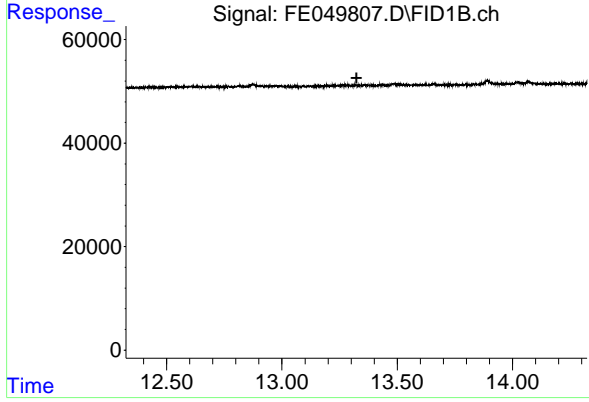




#9 ortho-Terphenyl (SURR)

R.T.: 0.000 min  
 Exp R.T. : 11.888 min  
 Response: 0  
 Conc: N.D.

Instrument :  
 FID\_E  
 ClientSampleId :  
 I.BLK



#12 1-chlorooctadecane (SURR)

R.T.: 0.000 min  
 Exp R.T. : 13.323 min  
 Response: 0  
 Conc: N.D.