

Data Path : Z:\pestpcbsrv\HPCHEM1\FID_E\Data\FE083124AL\
 Data File : FE049875.D
 Signal(s) : FID1B.ch
 Acq On : 31 Aug 2024 06:28
 Operator : YP\AJ
 Sample : P3799-08
 Misc :
 ALS Vial : 32 Sample Multiplier: 1

Instrument :
 FID_E
 ClientSampleId :
 WELL-2

Integration File: autoint1.e
 Quant Time: Aug 31 07:11:07 2024
 Quant Method : Z:\pestpcbsrv\HPCHEM1\FID_E\methods\Aliphatic EPH 081424.M
 Quant Title : GC Extractables
 QLast Update : Wed Aug 14 11:05:17 2024
 Response via : Initial Calibration
 Integrator: ChemStation

Volume Inj. : 1 ul
 Signal Phase : Rxi-1ms
 Signal Info : 20M x 0.18mm x 0.18um

Compound	R.T.	Response	Conc Units

System Monitoring Compounds			
12) S 1-chlorooctadecane (S... Spiked Amount 50.000	13.312	3504703 Recovery =	28.726 ug/ml 57.45%
Target Compounds			
4) T n-Dodecane (C12)	6.686	54855	0.349 ug/ml
6) T n-Tetradecane (C14)	8.512	65387	0.424 ug/ml

(f)=RT Delta > 1/2 Window

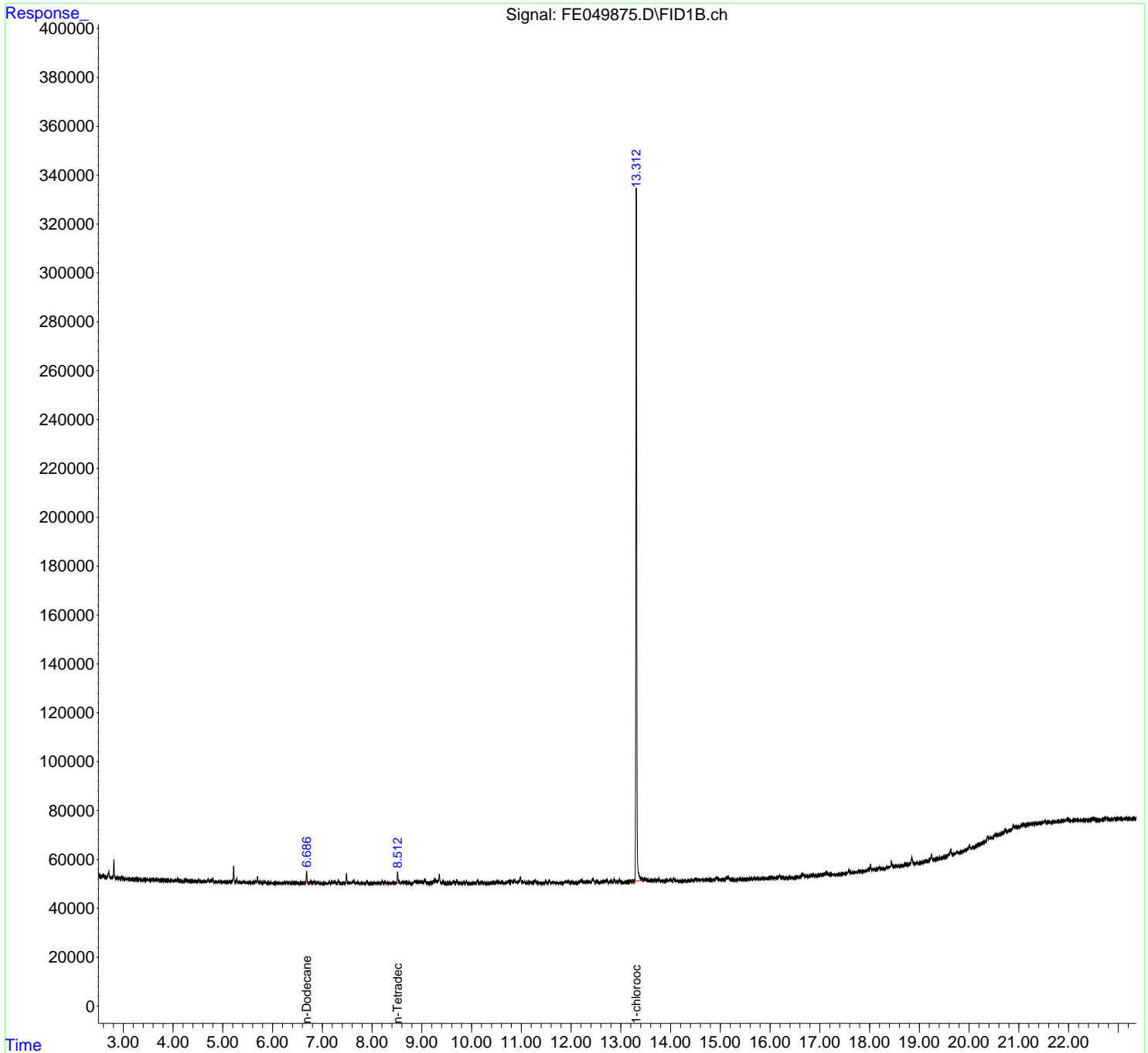
(m)=manual int.

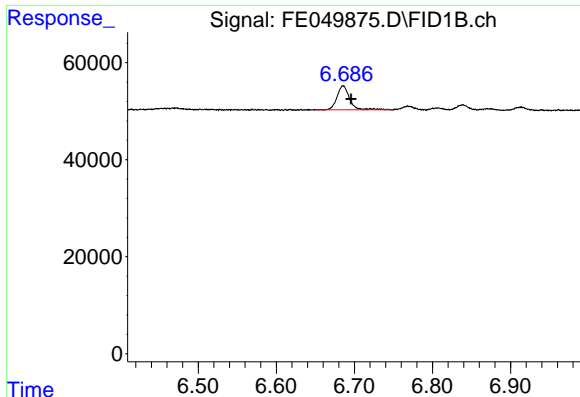
Data Path : Z:\pestpcbsrv\HPCHEM1\FID_E\Data\FE083124AL\
Data File : FE049875.D
Signal(s) : FID1B.ch
Acq On : 31 Aug 2024 06:28
Operator : YP\AJ
Sample : P3799-08
Misc :
ALS Vial : 32 Sample Multiplier: 1

Instrument :
FID_E
ClientSampleId :
WELL-2

Integration File: autoint1.e
Quant Time: Aug 31 07:11:07 2024
Quant Method : Z:\pestpcbsrv\HPCHEM1\FID_E\methods\Aliphatic EPH 081424.M
Quant Title : GC Extractables
QLast Update : Wed Aug 14 11:05:17 2024
Response via : Initial Calibration
Integrator: ChemStation

Volume Inj. : 1 ul
Signal Phase : Rxi-1ms
Signal Info : 20M x 0.18mm x 0.18um

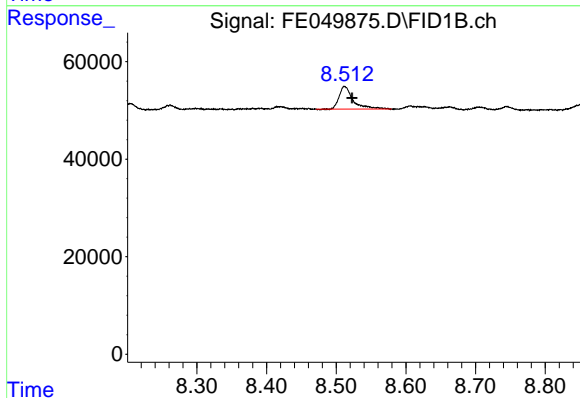




#4 n-Dodecane (C12)

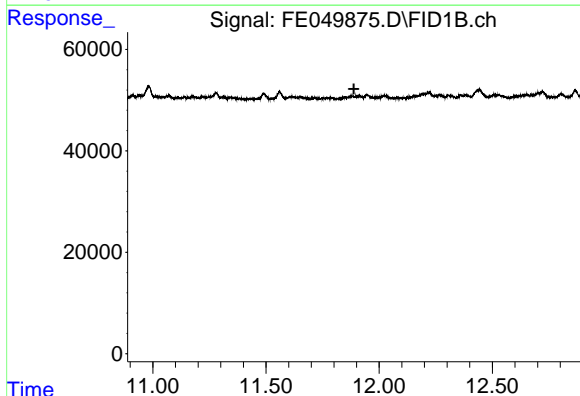
R.T.: 6.686 min
 Delta R.T.: -0.010 min
 Response: 54855
 Conc: 0.35 ug/ml

Instrument :
 FID_E
 ClientSampleId :
 WELL-2



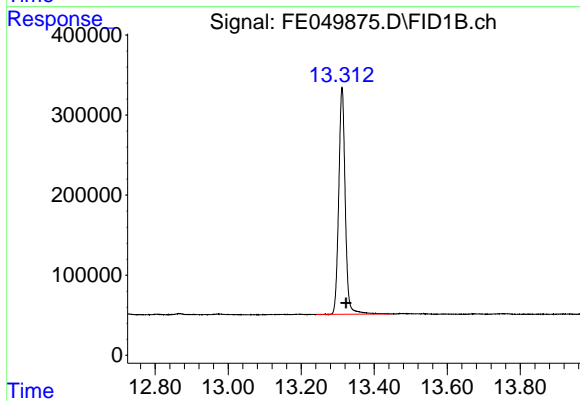
#6 n-Tetradecane (C14)

R.T.: 8.512 min
 Delta R.T.: -0.010 min
 Response: 65387
 Conc: 0.42 ug/ml



#9 ortho-Terphenyl (SURR)

R.T.: 0.000 min
 Exp R.T. : 11.888 min
 Response: 0
 Conc: N.D.



#12 1-chlorooctadecane (SURR)

R.T.: 13.312 min
 Delta R.T.: -0.012 min
 Response: 3504703
 Conc: 28.73 ug/ml