

Data Path : Z:\pestpcbsrv\HPCHEM1\FID_E\Data\FE090122AL\
 Data File : FE037388.D
 Signal(s) : FID1B.ch
 Acq On : 01 Sep 2022 18:43
 Operator : YP\AJ
 Sample : N4464-03D
 Misc :
 ALS Vial : 19 Sample Multiplier: 1

Instrument :
 FID_E
 ClientSampleId :

Integration File: autoint1.e
 Quant Time: Sep 02 02:21:34 2022
 Quant Method : Z:\pestpcbsrv\HPCHEM1\FID_D\methods\Aliphatic EPH 082922.M
 Quant Title : GC Extractables
 QLast Update : Tue Aug 30 06:54:11 2022
 Response via : Initial Calibration
 Integrator: ChemStation

Volume Inj. : 1 ul
 Signal Phase : Rxi-1ms
 Signal Info : 20M x 0.18mm x 0.18um

Compound	R.T.	Response	Conc Units

System Monitoring Compounds			
9) S ortho-Terphenyl (SURR)	11.639	4581851	27.113 ug/ml
Spiked Amount	50.000	Recovery	= 54.23%
12) S 1-chlorooctadecane (S...	13.060	3555238	27.624 ug/ml
Spiked Amount	50.000	Recovery	= 55.25%
Target Compounds			
17) T n-Tricontane (C30)	17.746	87224	0.641 ug/ml
18) T n-Dotriacontane (C32)	18.572	126621	0.948 ug/ml
19) T n-Tetratriacontane (C34)	19.352	82488	0.652 ug/ml
20) T n-Hexatriacontane (C36)	20.088	52860	0.411 ug/ml

(f)=RT Delta > 1/2 Window

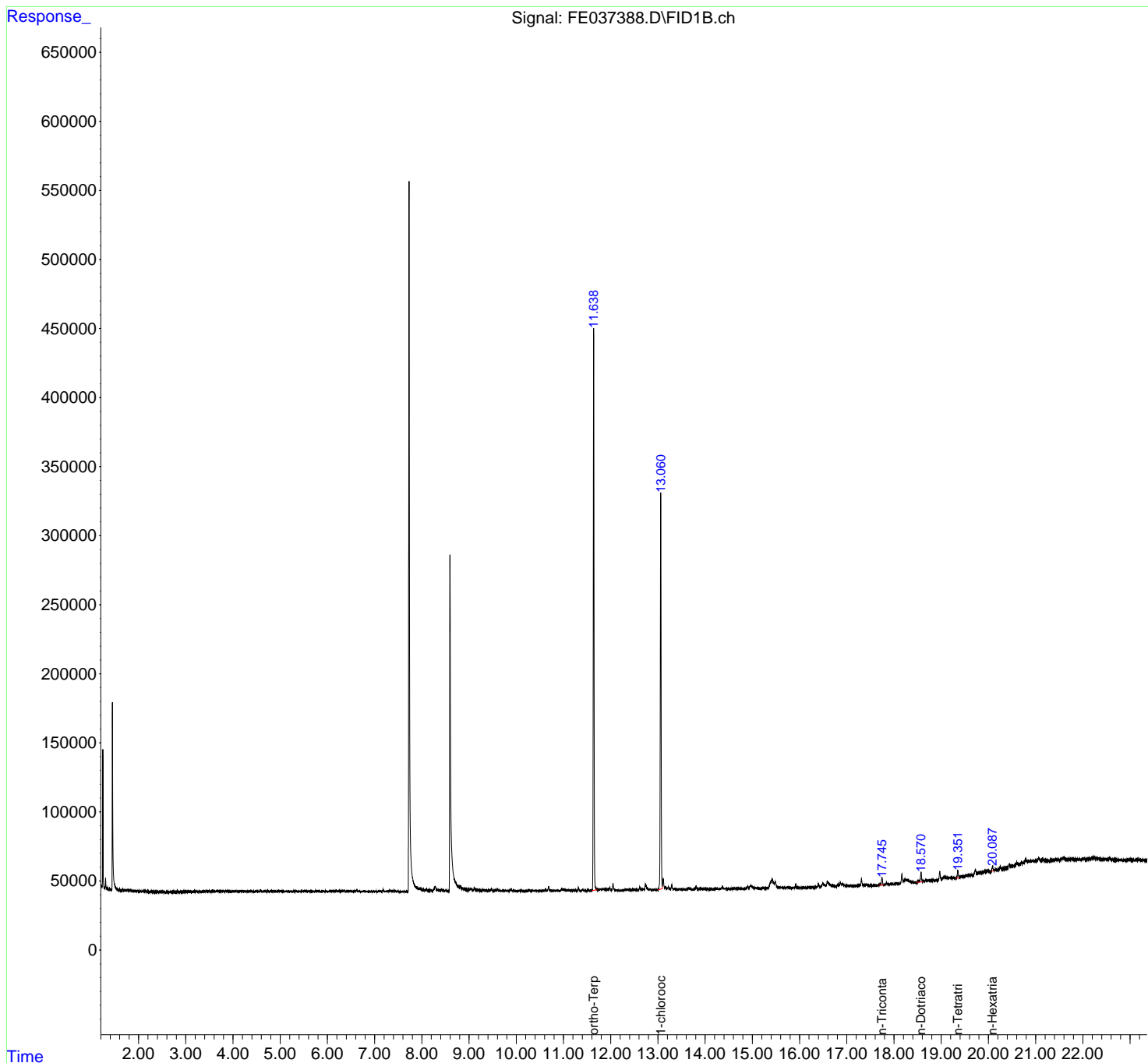
(m)=manual int.

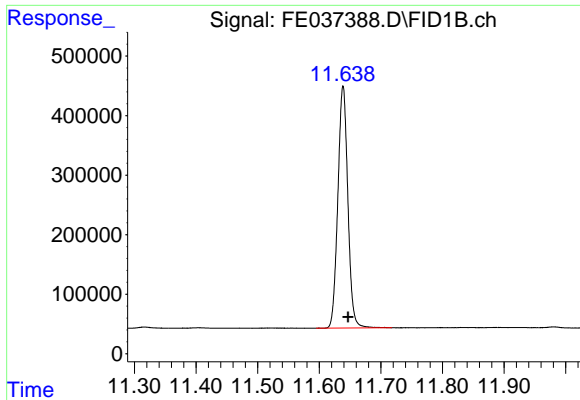
Data Path : Z:\pestpcbsrv\HPCHEM1\FID_E\Data\FE090122AL\
 Data File : FE037388.D
 Signal(s) : FID1B.ch
 Acq On : 01 Sep 2022 18:43
 Operator : YP\AJ
 Sample : N4464-03D
 Misc :
 ALS Vial : 19 Sample Multiplier: 1

Instrument :
 FID_E
 ClientSampleId :

Integration File: autoint1.e
 Quant Time: Sep 02 02:21:34 2022
 Quant Method : Z:\pestpcbsrv\HPCHEM1\FID_D\methods\Aliphatic EPH 082922.M
 Quant Title : GC Extractables
 QLast Update : Tue Aug 30 06:54:11 2022
 Response via : Initial Calibration
 Integrator: ChemStation

Volume Inj. : 1 ul
 Signal Phase : Rxi-1ms
 Signal Info : 20M x 0.18mm x 0.18um

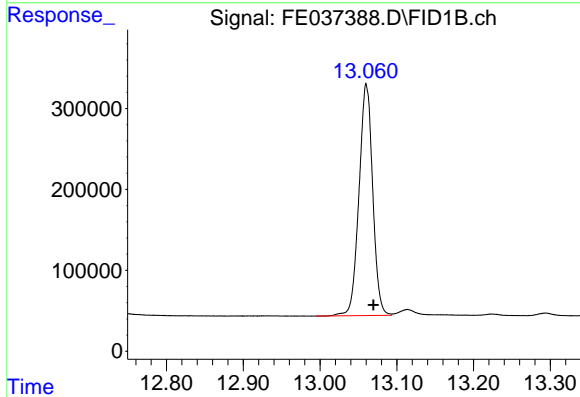




#9 ortho-Terphenyl (SURR)

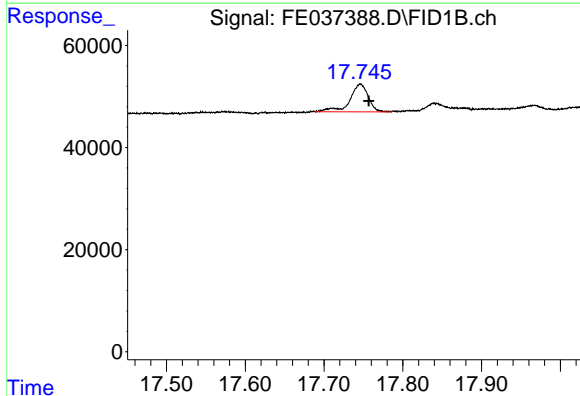
R.T.: 11.639 min
 Delta R.T.: -0.008 min
 Response: 4581851
 Conc: 27.11 ug/ml

Instrument :
 FID_E
 ClientSampleId :



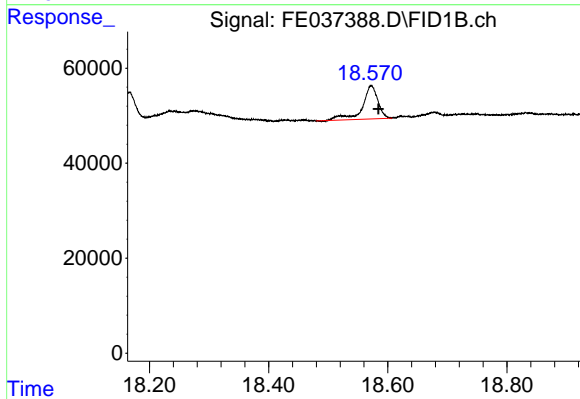
#12 1-chlorooctadecane (SURR)

R.T.: 13.060 min
 Delta R.T.: -0.009 min
 Response: 355238
 Conc: 27.62 ug/ml



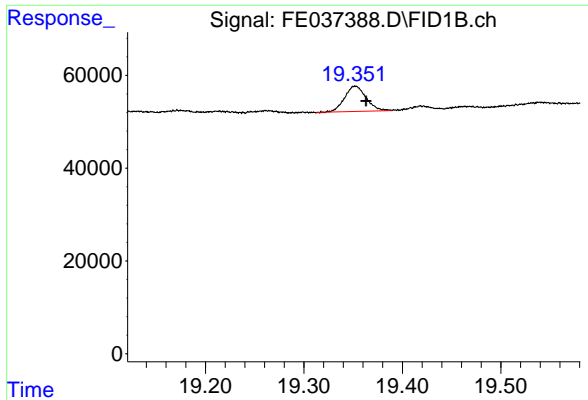
#17 n-Tricontane (C30)

R.T.: 17.746 min
 Delta R.T.: -0.011 min
 Response: 87224
 Conc: 0.64 ug/ml



#18 n-Dotriacontane (C32)

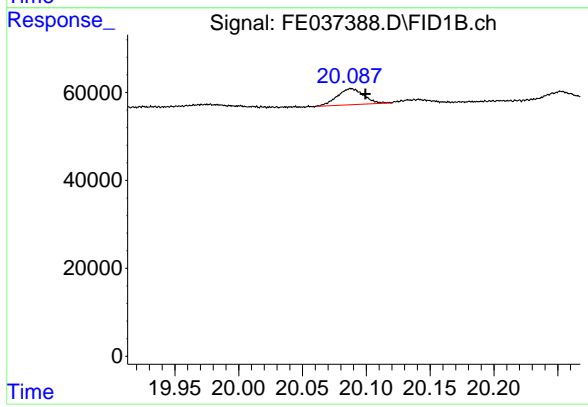
R.T.: 18.572 min
 Delta R.T.: -0.012 min
 Response: 126621
 Conc: 0.95 ug/ml



#19 n-Tetratriacontane (C34)

R.T.: 19.352 min
 Delta R.T.: -0.011 min
 Response: 82488
 Conc: 0.65 ug/ml

Instrument :
 FID_E
 ClientSampleId :



#20 n-Hexatriacontane (C36)

R.T.: 20.088 min
 Delta R.T.: -0.011 min
 Response: 52860
 Conc: 0.41 ug/ml