

Data Path : Z:\pestpcbsrv\HPCHEM1\FID_E\Data\FE090723AL\
Data File : FE044121.D
Signal(s) : FID1B.ch
Acq On : 07 Sep 2023 12:35
Operator : YP\AJ
Sample : I.BLK
Misc :
ALS Vial : 1 Sample Multiplier: 1

Instrument :
FID_E
ClientSampleId :
I.BLK

Integration File: autoint1.e
Quant Time: Sep 08 01:15:58 2023
Quant Method : Z:\pestpcbsrv\HPCHEM1\FID_E\methods\Aliphatic EPH 083023.M
Quant Title : GC Extractables
QLast Update : Thu Aug 31 03:37:37 2023
Response via : Initial Calibration
Integrator: ChemStation

Volume Inj. : 1 u1
Signal Phase : Rxi-1ms
Signal Info : 20M x 0.18mm x 0.18um

Compound	R.T.	Response	Conc Units

System Monitoring Compounds			
Target Compounds			

(f)=RT Delta > 1/2 Window

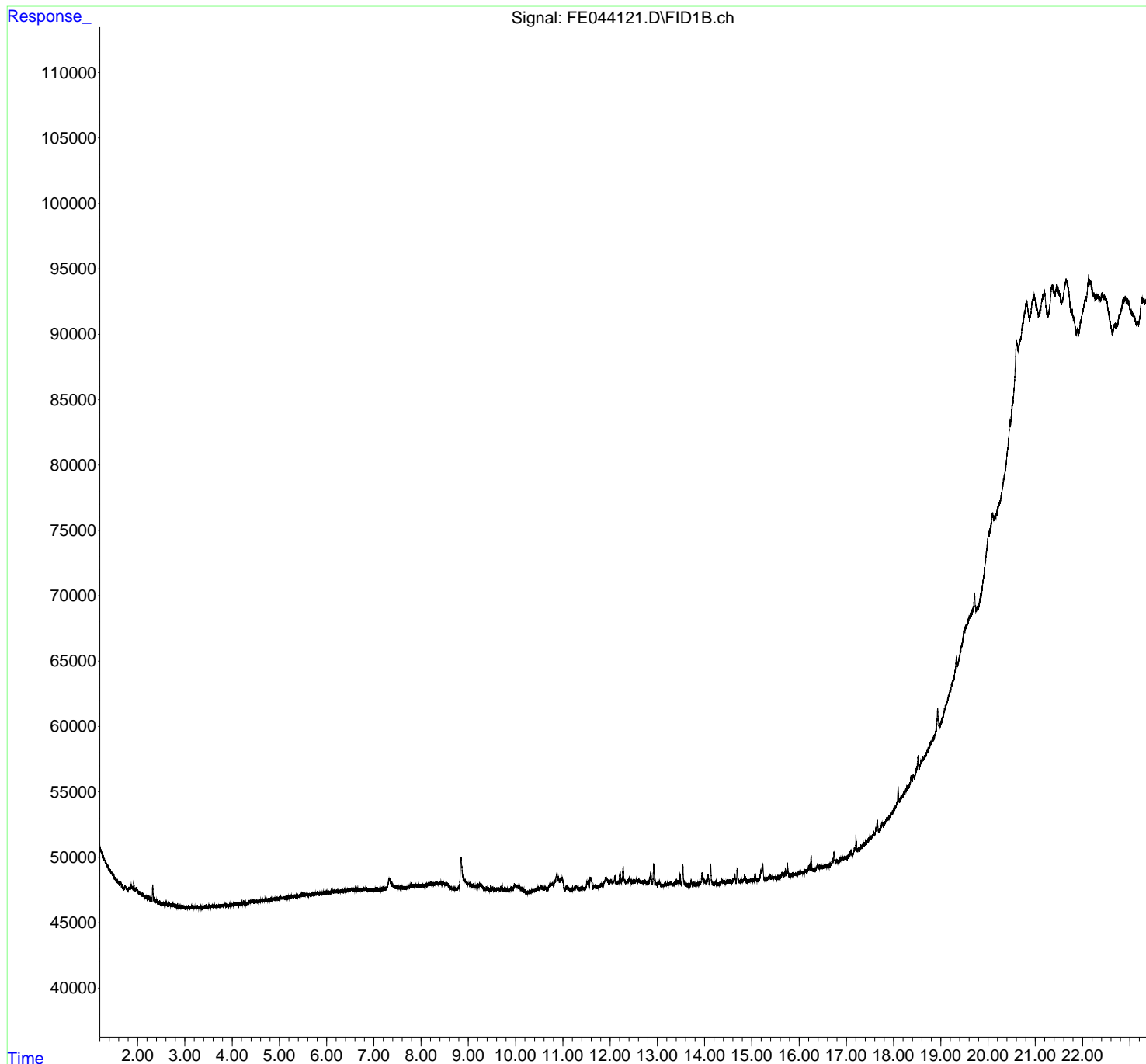
(m)=manual int.

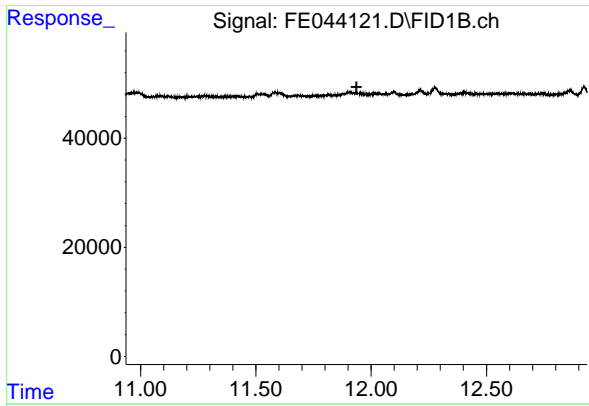
Data Path : Z:\pestpcbsrv\HPCHEM1\FID_E\Data\FE090723AL\
Data File : FE044121.D
Signal(s) : FID1B.ch
Acq On : 07 Sep 2023 12:35
Operator : YP\AJ
Sample : I.BLK
Misc :
ALS Vial : 1 Sample Multiplier: 1

Instrument :
FID_E
ClientSampleId :
I.BLK

Integration File: autoint1.e
Quant Time: Sep 08 01:15:58 2023
Quant Method : Z:\pestpcbsrv\HPCHEM1\FID_E\methods\Aliphatic EPH 083023.M
Quant Title : GC Extractables
QLast Update : Thu Aug 31 03:37:37 2023
Response via : Initial Calibration
Integrator: ChemStation

Volume Inj. : 1 ul
Signal Phase : Rxi-1ms
Signal Info : 20M x 0.18mm x 0.18um

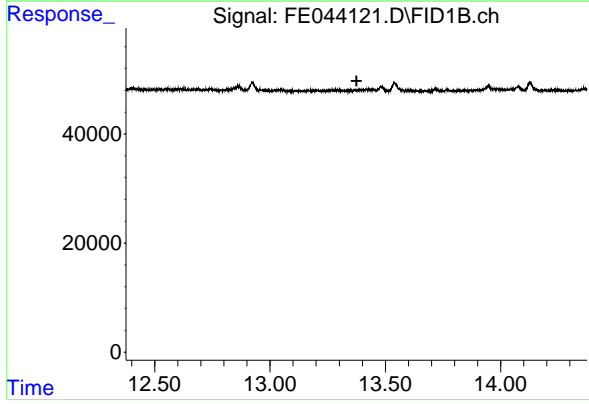




#9 ortho-Terphenyl (SURR)

R.T.: 0.000 min
 Exp R.T. : 11.937 min
 Response: 0
 Conc: N.D.

Instrument :
 FID_E
 ClientSampleId :
 I.BLK



#12 1-chlorooctadecane (SURR)

R.T.: 0.000 min
 Exp R.T. : 13.375 min
 Response: 0
 Conc: N.D.