

Data Path : Z:\pestpcbsrv\HPCHEM1\FID_E\Data\FE090723AL\
 Data File : FE044136.D
 Signal(s) : FID1B.ch
 Acq On : 07 Sep 2023 21:42
 Operator : YP\AJ
 Sample : 04314-01
 Misc :
 ALS Vial : 20 Sample Multiplier: 1

Instrument :
 FID_E
ClientSampleId :
 VNJ-201

Manual Integrations
APPROVED
 Reviewed By :Yogesh Patel 09/08/2023
 Supervised By :Ankita Jodhani 09/08/2023

Integration File: autoint1.e
 Quant Time: Sep 08 01:17:53 2023
 Quant Method : Z:\pestpcbsrv\HPCHEM1\FID_E\methods\Aliphatic EPH 083023.M
 Quant Title : GC Extractables
 QLast Update : Thu Aug 31 03:37:37 2023
 Response via : Initial Calibration
 Integrator: ChemStation

Volume Inj. : 1 ul
 Signal Phase : Rxi-1ms
 Signal Info : 20M x 0.18mm x 0.18um

Compound	R.T.	Response	Conc Units
System Monitoring Compounds			
9) S ortho-Terphenyl (SURR)	11.936	5788350	30.553 ug/mlm
Spiked Amount	50.000	Recovery =	61.11%
12) S 1-chlorooctadecane (S...	13.376	4582383	33.170 ug/ml
Spiked Amount	50.000	Recovery =	66.34%

Target Compounds

(f)=RT Delta > 1/2 Window

(m)=manual int.

Data Path : Z:\pestpcbsrv\HPCHEM1\FID_E\Data\FE090723AL\
 Data File : FE044136.D
 Signal(s) : FID1B.ch
 Acq On : 07 Sep 2023 21:42
 Operator : YP\AJ
 Sample : 04314-01
 Misc :
 ALS Vial : 20 Sample Multiplier: 1

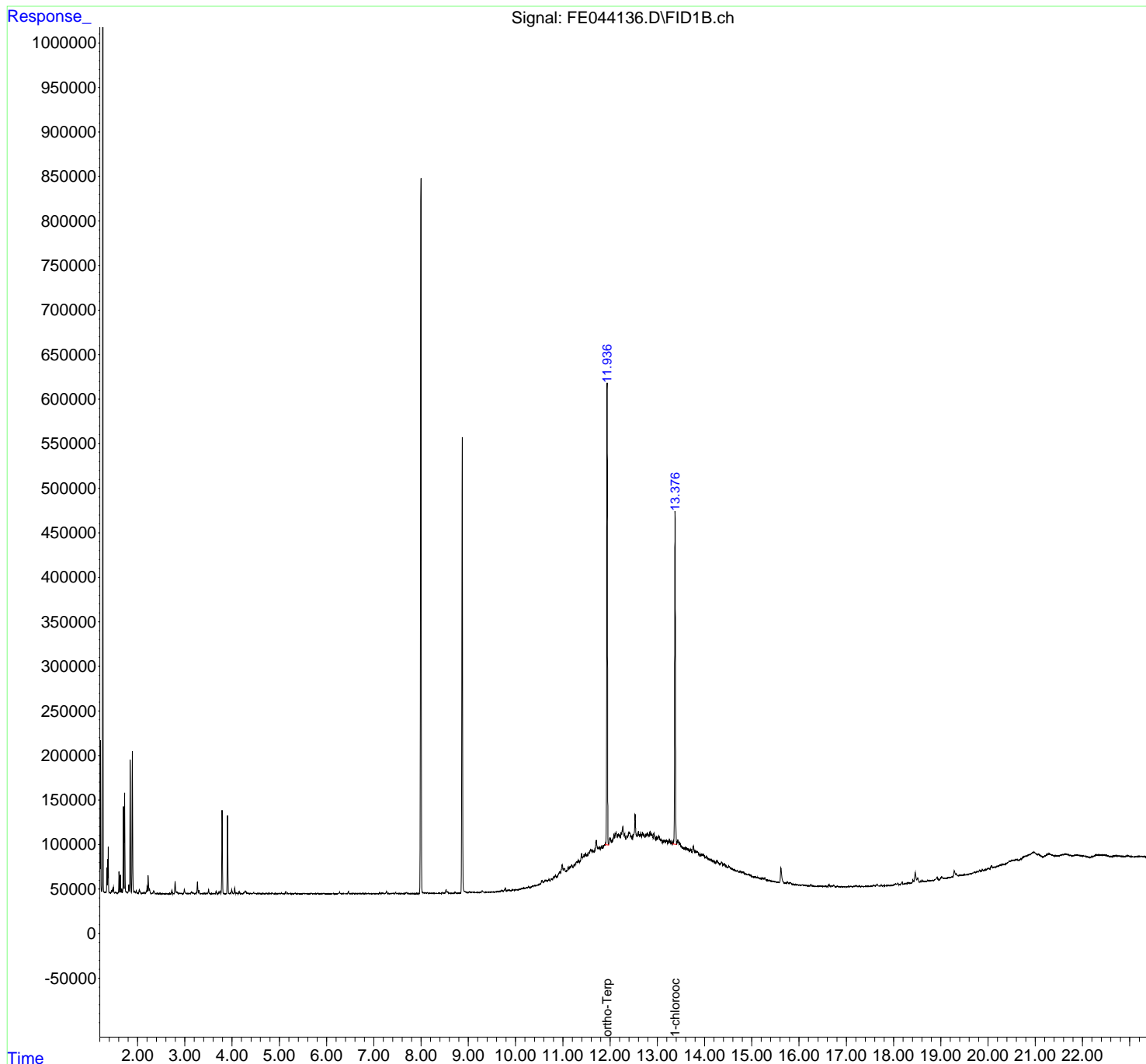
Instrument :
 FID_E
ClientSampleId :
 VNJ-201

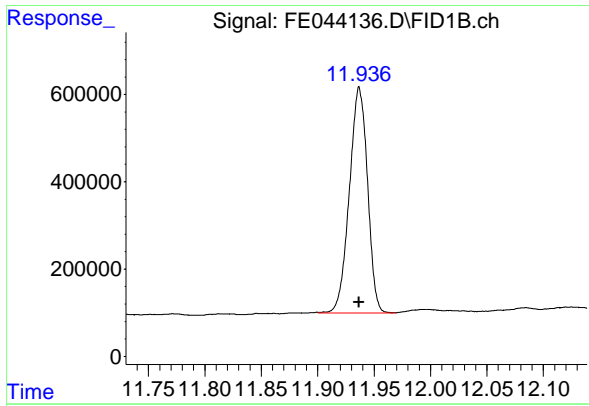
Manual Integrations
APPROVED

Reviewed By :Yogesh Patel 09/08/2023
 Supervised By :Ankita Jodhani 09/08/2023

Integration File: autoint1.e
 Quant Time: Sep 08 01:17:53 2023
 Quant Method : Z:\pestpcbsrv\HPCHEM1\FID_E\methods\Aliphatic EPH 083023.
 Quant Title : GC Extractables
 QLast Update : Thu Aug 31 03:37:37 2023
 Response via : Initial Calibration
 Integrator: ChemStation

Volume Inj. : 1 ul
 Signal Phase : Rxi-1ms
 Signal Info : 20M x 0.18mm x 0.18um





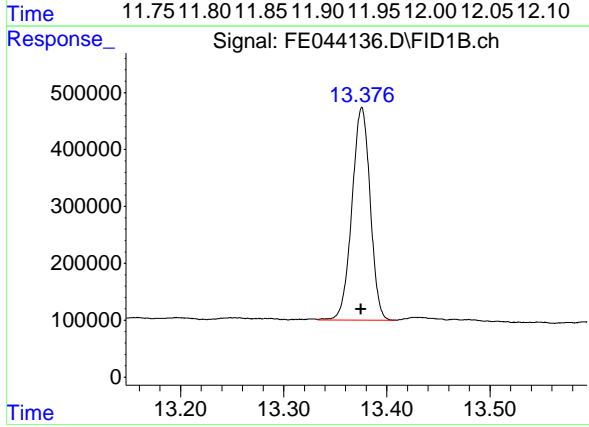
#9 ortho-Terphenyl (SURR)

R.T.: 11.936 min
Delta R.T.: 0.000 min
Response: 5788350
Conc: 30.55 ug/ml

Instrument :
FID_E
ClientSampleId :
VNJ-201

Manual Integrations
APPROVED

Reviewed By :Yogesh Patel 09/08/2023
Supervised By :Ankita Jodhani 09/08/2023



#12 1-chlorooctadecane (SURR)

R.T.: 13.376 min
Delta R.T.: 0.000 min
Response: 4582383
Conc: 33.17 ug/ml