

Data Path : Z:\pestpcbsrv\HPCHEM1\FID\_E\Data\FE090823AL\  
 Data File : FE044159.D  
 Signal(s) : FID1B.ch  
 Acq On : 08 Sep 2023 16:13  
 Operator : YP\AJ  
 Sample : 04335-01  
 Misc :  
 ALS Vial : 17 Sample Multiplier: 1

Instrument :  
 FID\_E  
 ClientSampleId :

Integration File: autoint1.e  
 Quant Time: Sep 08 16:48:45 2023  
 Quant Method : Z:\pestpcbsrv\HPCHEM1\FID\_E\methods\Aliphatic EPH 083023.M  
 Quant Title : GC Extractables  
 QLast Update : Thu Aug 31 03:37:37 2023  
 Response via : Initial Calibration  
 Integrator: ChemStation

Volume Inj. : 1 ul  
 Signal Phase : Rxi-1ms  
 Signal Info : 20M x 0.18mm x 0.18um

Compound	R.T.	Response	Conc Units
-----			
System Monitoring Compounds			
9) S ortho-Terphenyl (SURR)	11.932	4710834	24.866 ug/ml
Spiked Amount	50.000	Recovery	= 49.73%
12) S 1-chlorooctadecane (S...	13.370	3721974	26.942 ug/ml
Spiked Amount	50.000	Recovery	= 53.88%
Target Compounds			
1) T n-Nonane (C9)	3.264f	103624	0.635 ug/ml
-----			

(f)=RT Delta > 1/2 Window

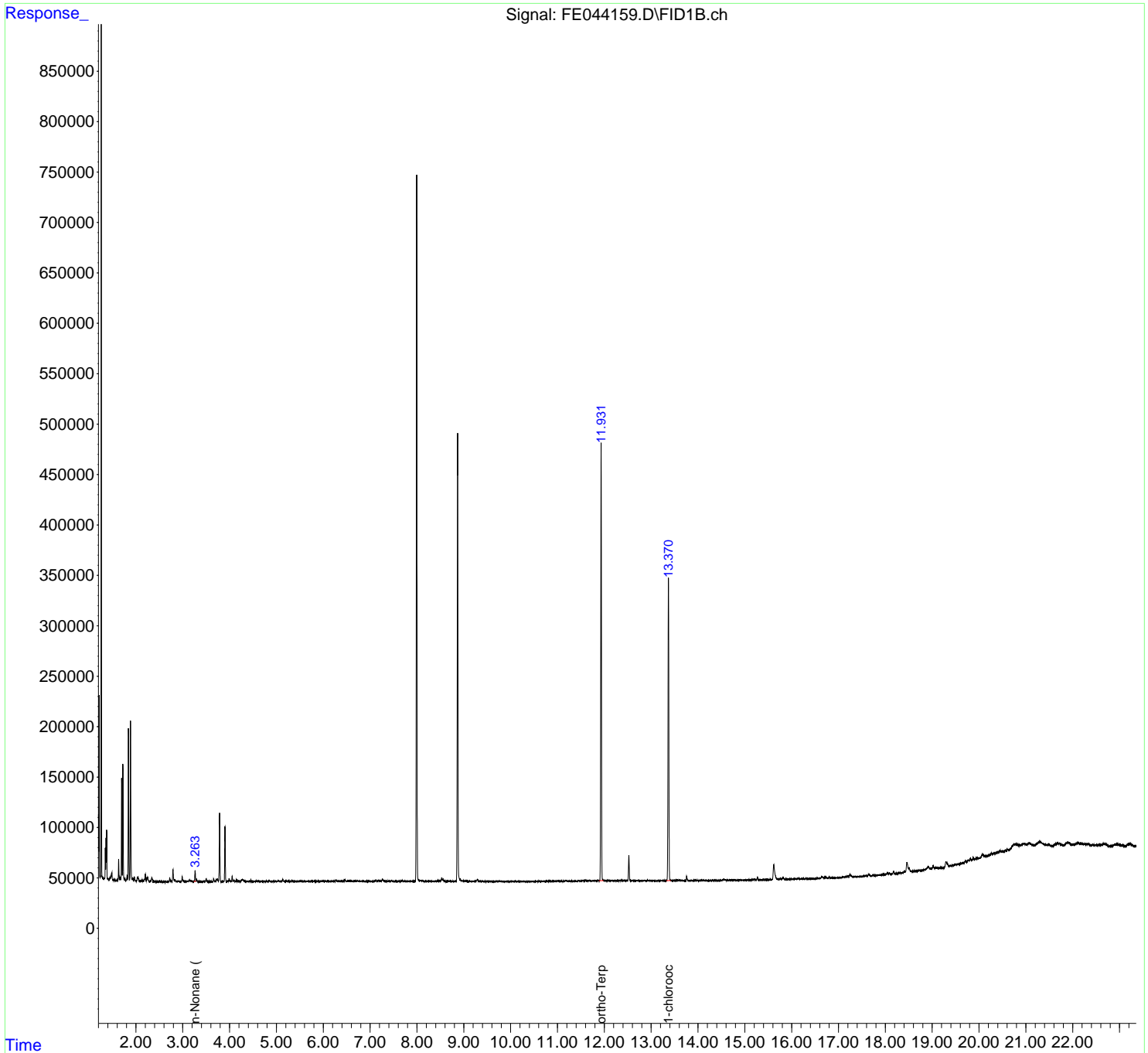
(m)=manual int.

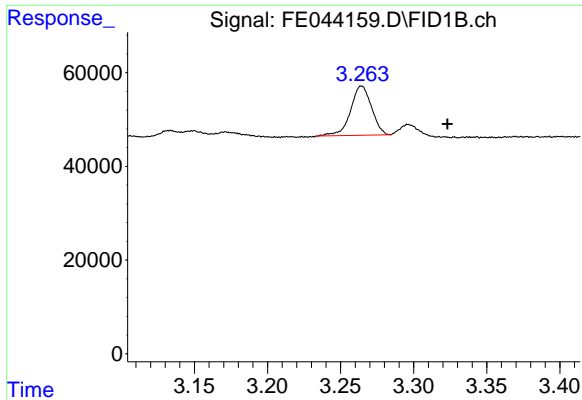
Data Path : Z:\pestpcbsrv\HPCHEM1\FID\_E\Data\FE090823AL\  
 Data File : FE044159.D  
 Signal(s) : FID1B.ch  
 Acq On : 08 Sep 2023 16:13  
 Operator : YP\AJ  
 Sample : 04335-01  
 Misc :  
 ALS Vial : 17 Sample Multiplier: 1

Instrument :  
 FID\_E  
 ClientSampleId :

Integration File: autoint1.e  
 Quant Time: Sep 08 16:48:45 2023  
 Quant Method : Z:\pestpcbsrv\HPCHEM1\FID\_E\methods\Aliphatic EPH 083023.M  
 Quant Title : GC Extractables  
 QLast Update : Thu Aug 31 03:37:37 2023  
 Response via : Initial Calibration  
 Integrator: ChemStation

Volume Inj. : 1 ul  
 Signal Phase : Rxi-1ms  
 Signal Info : 20M x 0.18mm x 0.18um

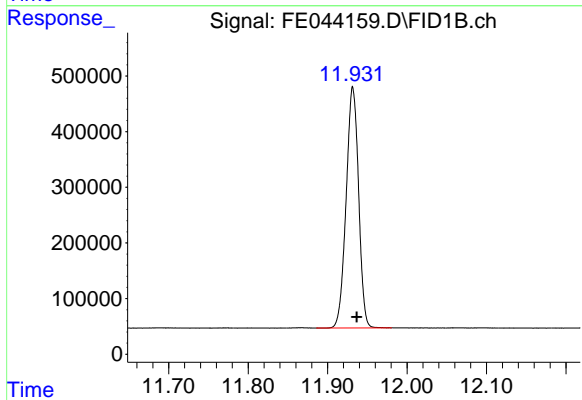




#1 n-Nonane (C9)

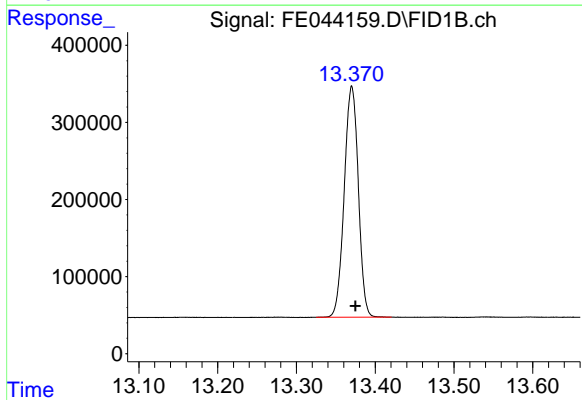
R.T.: 3.264 min  
Delta R.T.: -0.059 min  
Response: 103624  
Conc: 0.64 ug/ml

Instrument :  
FID\_E  
ClientSampleId :



#9 ortho-Terphenyl (SURR)

R.T.: 11.932 min  
Delta R.T.: -0.005 min  
Response: 4710834  
Conc: 24.87 ug/ml



#12 1-chlorooctadecane (SURR)

R.T.: 13.370 min  
Delta R.T.: -0.005 min  
Response: 3721974  
Conc: 26.94 ug/ml