

Data Path : Z:\pestpcbsrv\HPCHEM1\FID_E\Data\FE090823AL\
 Data File : FE044164.D
 Signal(s) : FID1B.ch
 Acq On : 08 Sep 2023 18:47
 Operator : YP\AJ
 Sample : 04336-02
 Misc :
 ALS Vial : 22 Sample Multiplier: 1

Instrument :
 FID_E
 ClientSampleId :

Integration File: autoint1.e
 Quant Time: Sep 09 06:16:04 2023
 Quant Method : Z:\pestpcbsrv\HPCHEM1\FID_E\methods\Aliphatic EPH 083023.M
 Quant Title : GC Extractables
 QLast Update : Thu Aug 31 03:37:37 2023
 Response via : Initial Calibration
 Integrator: ChemStation

Volume Inj. : 1 ul
 Signal Phase : Rxi-1ms
 Signal Info : 20M x 0.18mm x 0.18um

Compound	R.T.	Response	Conc Units

System Monitoring Compounds			
9) S ortho-Terphenyl (SURR)	11.931	4343144	22.925 ug/ml
Spiked Amount	50.000	Recovery	= 45.85%
12) S 1-chlorooctadecane (S...	13.370	3344782	24.212 ug/ml
Spiked Amount	50.000	Recovery	= 48.42%
Target Compounds			
1) T n-Nonane (C9)	3.265f	103505	0.634 ug/ml
10) T n-Eicosane (C20)	12.979	216795	1.311 ug/ml
14) T n-Tetracosane (C24)	15.197	102145	0.653 ug/ml

(f)=RT Delta > 1/2 Window

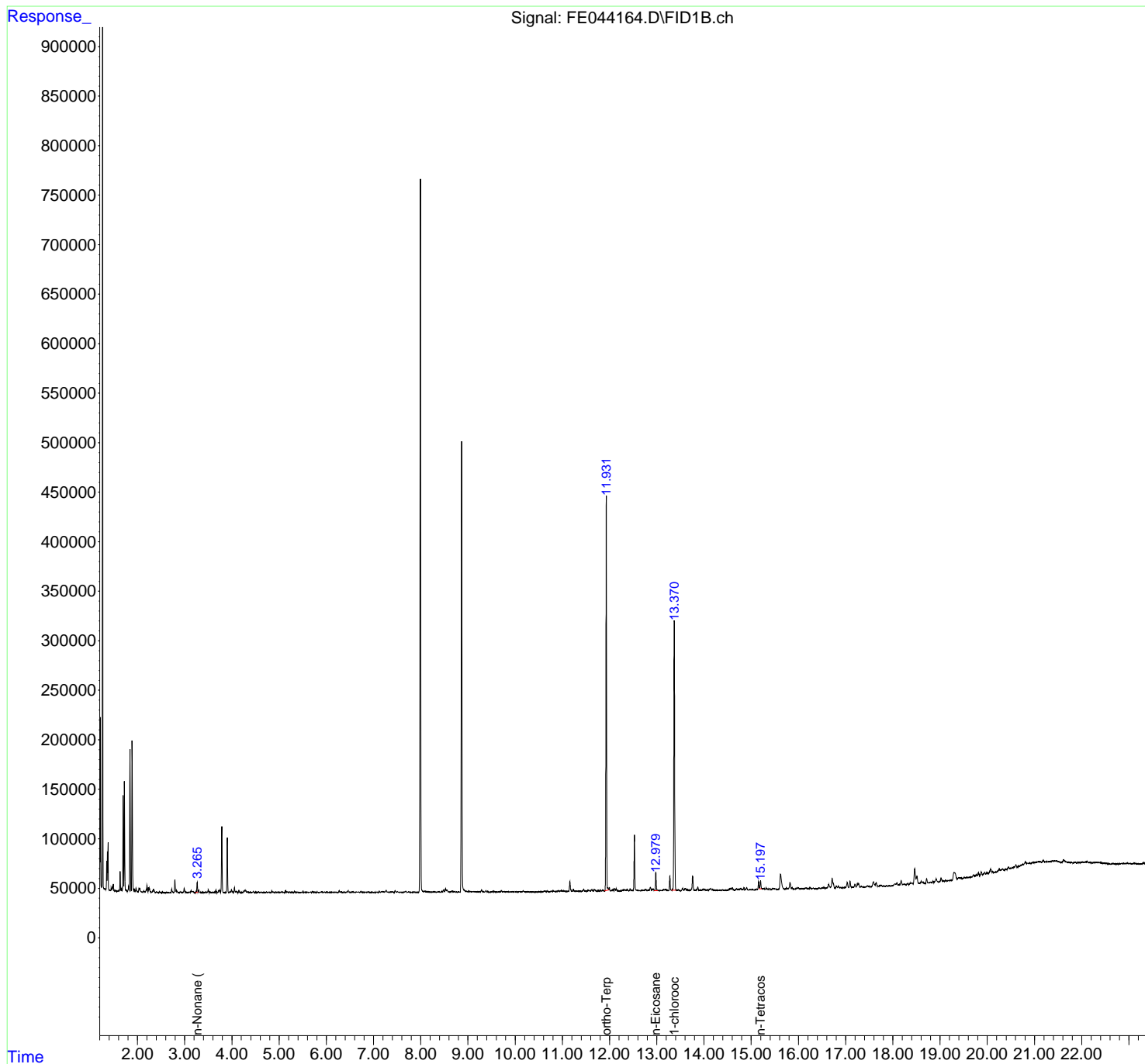
(m)=manual int.

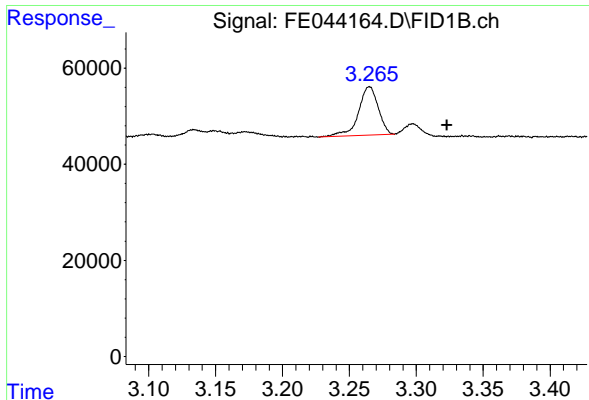
Data Path : Z:\pestpcbsrv\HPCHEM1\FID_E\Data\FE090823AL\
 Data File : FE044164.D
 Signal(s) : FID1B.ch
 Acq On : 08 Sep 2023 18:47
 Operator : YP\AJ
 Sample : 04336-02
 Misc :
 ALS Vial : 22 Sample Multiplier: 1

Instrument :
 FID_E
 ClientSampleId :

Integration File: autoint1.e
 Quant Time: Sep 09 06:16:04 2023
 Quant Method : Z:\pestpcbsrv\HPCHEM1\FID_E\methods\Aliphatic EPH 083023.M
 Quant Title : GC Extractables
 QLast Update : Thu Aug 31 03:37:37 2023
 Response via : Initial Calibration
 Integrator: ChemStation

Volume Inj. : 1 ul
 Signal Phase : Rxi-1ms
 Signal Info : 20M x 0.18mm x 0.18um

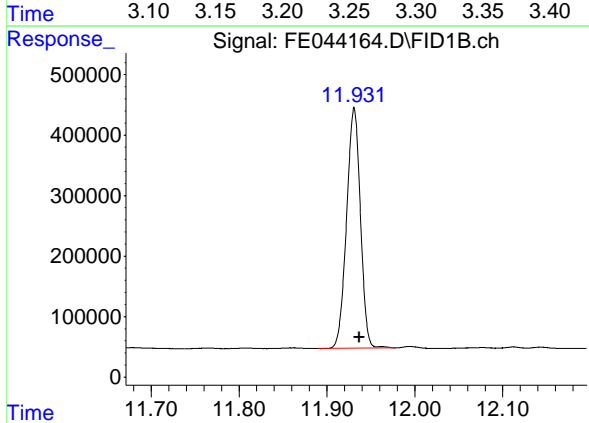




#1 n-Nonane (C9)

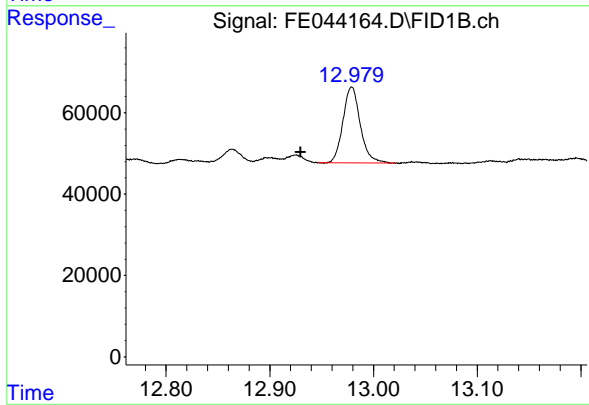
R.T.: 3.265 min
Delta R.T.: -0.058 min
Response: 103505
Conc: 0.63 ug/ml

Instrument :
FID_E
ClientSampleId :



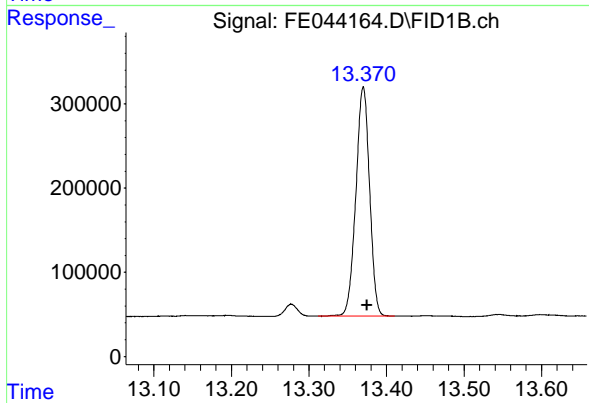
#9 ortho-Terphenyl (SURR)

R.T.: 11.931 min
Delta R.T.: -0.006 min
Response: 4343144
Conc: 22.92 ug/ml



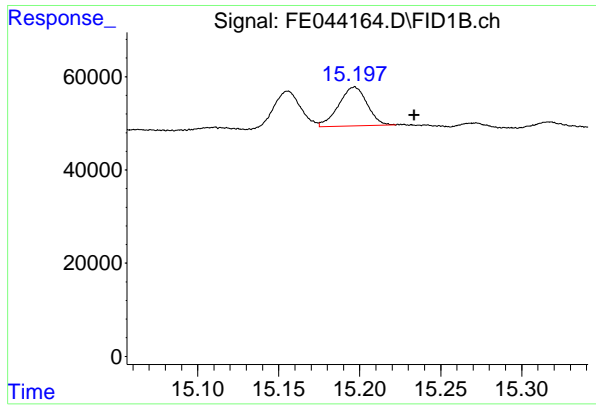
#10 n-Eicosane (C20)

R.T.: 12.979 min
Delta R.T.: 0.049 min
Response: 216795
Conc: 1.31 ug/ml



#12 1-chlorooctadecane (SURR)

R.T.: 13.370 min
Delta R.T.: -0.005 min
Response: 3344782
Conc: 24.21 ug/ml



#14 n-Tetracosane (C24)

R.T.: 15.197 min
Delta R.T.: -0.037 min
Response: 102145
Conc: 0.65 ug/ml

Instrument :
FID_E
ClientSampleId :