

Data Path : Z:\pestpcbsrv\HPCHEM1\FID_E\Data\FE090922AL\
 Data File : FE037478.D
 Signal(s) : FID1B.ch
 Acq On : 09 Sep 2022 11:40
 Operator : YP\AJ
 Sample : N4520-02DL 5X
 Misc :
 ALS Vial : 7 Sample Multiplier: 1

Instrument :
 FID_E
ClientSampleId :
 600535069-EPH-2DL

Integration File: autoint1.e
 Quant Time: Sep 12 02:41:36 2022
 Quant Method : Z:\pestpcbsrv\HPCHEM1\FID_D\methods\Aliphatic EPH 082922.M
 Quant Title : GC Extractables
 QLast Update : Tue Aug 30 06:54:11 2022
 Response via : Initial Calibration
 Integrator: ChemStation

Volume Inj. : 1 ul
 Signal Phase : Rxi-1ms
 Signal Info : 20M x 0.18mm x 0.18um

Compound	R.T.	Response	Conc Units

System Monitoring Compounds			
9) S ortho-Terphenyl (SURR)	11.641	829491	4.908 ug/ml
Spiked Amount	50.000	Recovery =	9.82%
12) S 1-chlorooctadecane (S...	13.065	610409	4.743 ug/ml
Spiked Amount	50.000	Recovery =	9.49%

Target Compounds

(f)=RT Delta > 1/2 Window

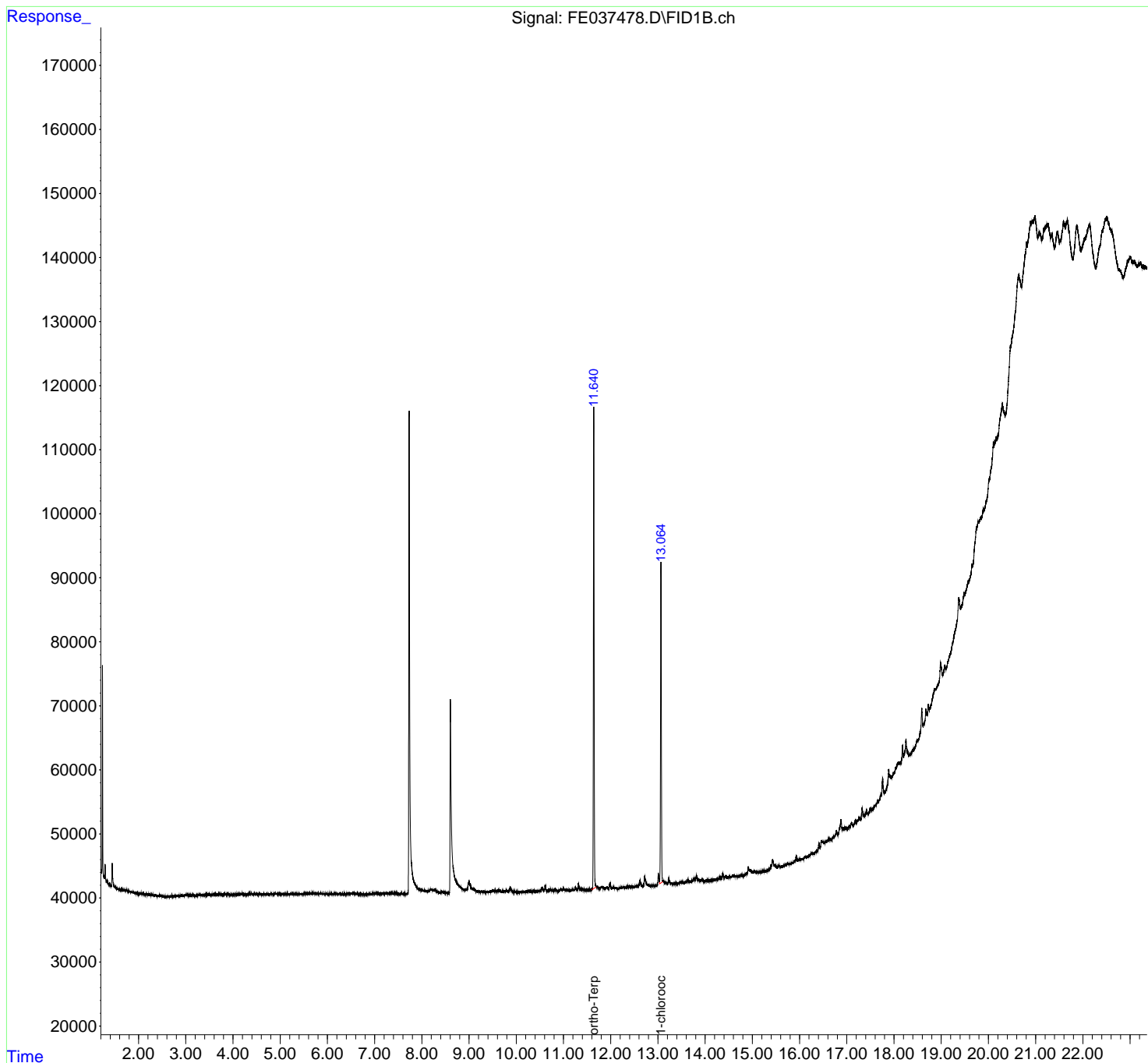
(m)=manual int.

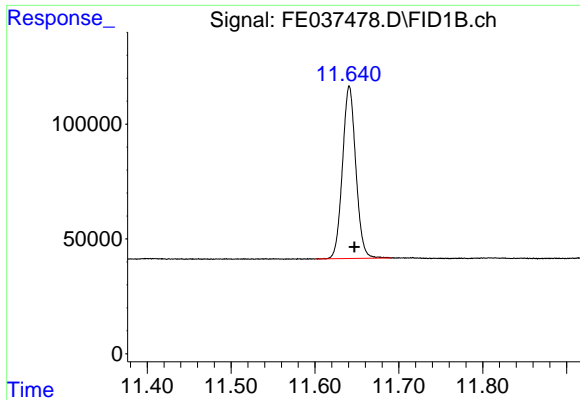
Data Path : Z:\pestpcbsrv\HPCHEM1\FID_E\Data\FE090922AL\
 Data File : FE037478.D
 Signal(s) : FID1B.ch
 Acq On : 09 Sep 2022 11:40
 Operator : YP\AJ
 Sample : N4520-02DL 5X
 Misc :
 ALS Vial : 7 Sample Multiplier: 1

Instrument :
 FID_E
 ClientSampleId :
 600535069-EPH-2DL

Integration File: autoint1.e
 Quant Time: Sep 12 02:41:36 2022
 Quant Method : Z:\pestpcbsrv\HPCHEM1\FID_D\methods\Aliphatic EPH 082922.M
 Quant Title : GC Extractables
 QLast Update : Tue Aug 30 06:54:11 2022
 Response via : Initial Calibration
 Integrator: ChemStation

Volume Inj. : 1 ul
 Signal Phase : Rxi-1ms
 Signal Info : 20M x 0.18mm x 0.18um

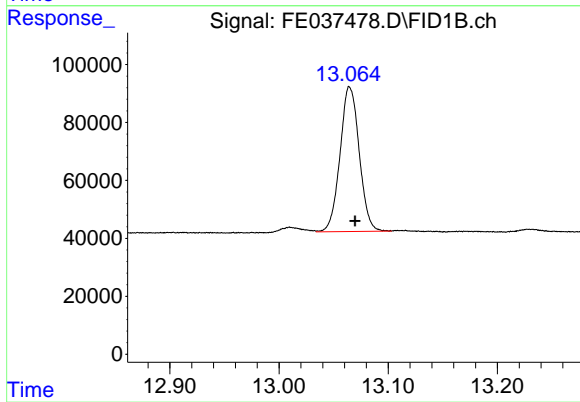




#9 ortho-Terphenyl (SURR)

R.T.: 11.641 min
Delta R.T.: -0.006 min
Response: 829491
Conc: 4.91 ug/ml

Instrument :
FID_E
ClientSampleId :
600535069-EPH-2DL



#12 1-chlorooctadecane (SURR)

R.T.: 13.065 min
Delta R.T.: -0.005 min
Response: 610409
Conc: 4.74 ug/ml