

Data Path : Z:\pestpcbsrv\HPCHEM1\FID_E\Data\FE091324AL\
 Data File : FE050068.D
 Signal(s) : FID1B.ch
 Acq On : 12 Sep 2024 14:13
 Operator : YP\AJ
 Sample : PB163324BS
 Misc :
 ALS Vial : 8 Sample Multiplier: 1

Instrument :

FID_E

ClientSampleId :

PB163324BS

Manual Integrations**APPROVED**

Reviewed By :Yogesh Patel 09/13/2024

Supervised By :Ankita Jodhani 09/13/2024

Integration File: autoint1.e
 Quant Time: Sep 13 01:20:05 2024
 Quant Method : Z:\pestpcbsrv\HPCHEM1\FID_E\methods\Aliphatic EPH 091024.M
 Quant Title : GC Extractables
 QLast Update : Mon Sep 09 17:11:47 2024
 Response via : Initial Calibration
 Integrator: ChemStation

Volume Inj. : 1 ul
 Signal Phase : Rxi-1ms
 Signal Info : 20M x 0.18mm x 0.18um

Compound	R.T.	Response	Conc Units

System Monitoring Compounds			
9) S ortho-Terphenyl (SURR)	11.877	5645061	37.942 ug/ml
Spiked Amount	50.000	Recovery	= 75.88%
12) S 1-chlorooctadecane (S...	13.310	4693530	41.784 ug/ml
Spiked Amount	50.000	Recovery	= 83.57%
Target Compounds			
1) T n-Nonane (C9)	3.270	4785429	35.305 ug/ml
2) T n-Decane (C10)	4.518	5056291	36.637 ug/ml
3) T A~Naphthalene (C11.7)	6.224	5382568	38.455 ug/ml
4) T n-Dodecane (C12)	6.683	5179076	37.453 ug/ml
5) T A~2-methylnaphthalene...	7.319	4864915	37.013 ug/ml
6) T n-Tetradecane (C14)	8.511	5438932	39.942 ug/ml
7) T n-Hexadecane (C16)	10.116	5485577	39.492 ug/ml
8) T n-Octadecane (C18)	11.557	5485607	39.154 ug/ml
10) T n-Eicosane (C20)	12.866	5496295	40.973 ug/ml
11) T n-Heneicosane (C21)	13.476	5331765	40.577 ug/ml
13) T n-Docosane (C22)	14.062	5248727	40.307 ug/ml
14) T n-Tetracosane (C24)	15.160	10086987	77.241 ug/ml
15) T n-Hexacosane (C26)	16.184	5146374	40.225 ug/ml
16) T n-Octacosane (C28)	17.132	5683601	44.124 ug/ml
17) T n-Tricontane (C30)	18.020	5287357	39.540 ug/ml
18) T n-Dotriacontane (C32)	18.850	5551810	41.663 ug/mlm
19) T n-Tetratriacontane (C34)	19.633	5508335	44.580 ug/ml
20) T n-Hexatriacontane (C36)	20.373	5404160	48.708 ug/mlm
21) T n-Octatriacontane (C38)	21.100	5331610	48.346 ug/ml
22) T n-Tetracontane (C40)	21.989	4831853	44.404 ug/ml

(f)=RT Delta > 1/2 Window

(m)=manual int.

Data Path : Z:\pestpcbsrv\HPCHEM1\FID_E\Data\FE091324AL\
 Data File : FE050068.D
 Signal(s) : FID1B.ch
 Acq On : 12 Sep 2024 14:13
 Operator : YP\AJ
 Sample : PB163324BS
 Misc :
 ALS Vial : 8 Sample Multiplier: 1

Instrument :

FID_E

ClientSampleId :

PB163324BS

Manual Integrations

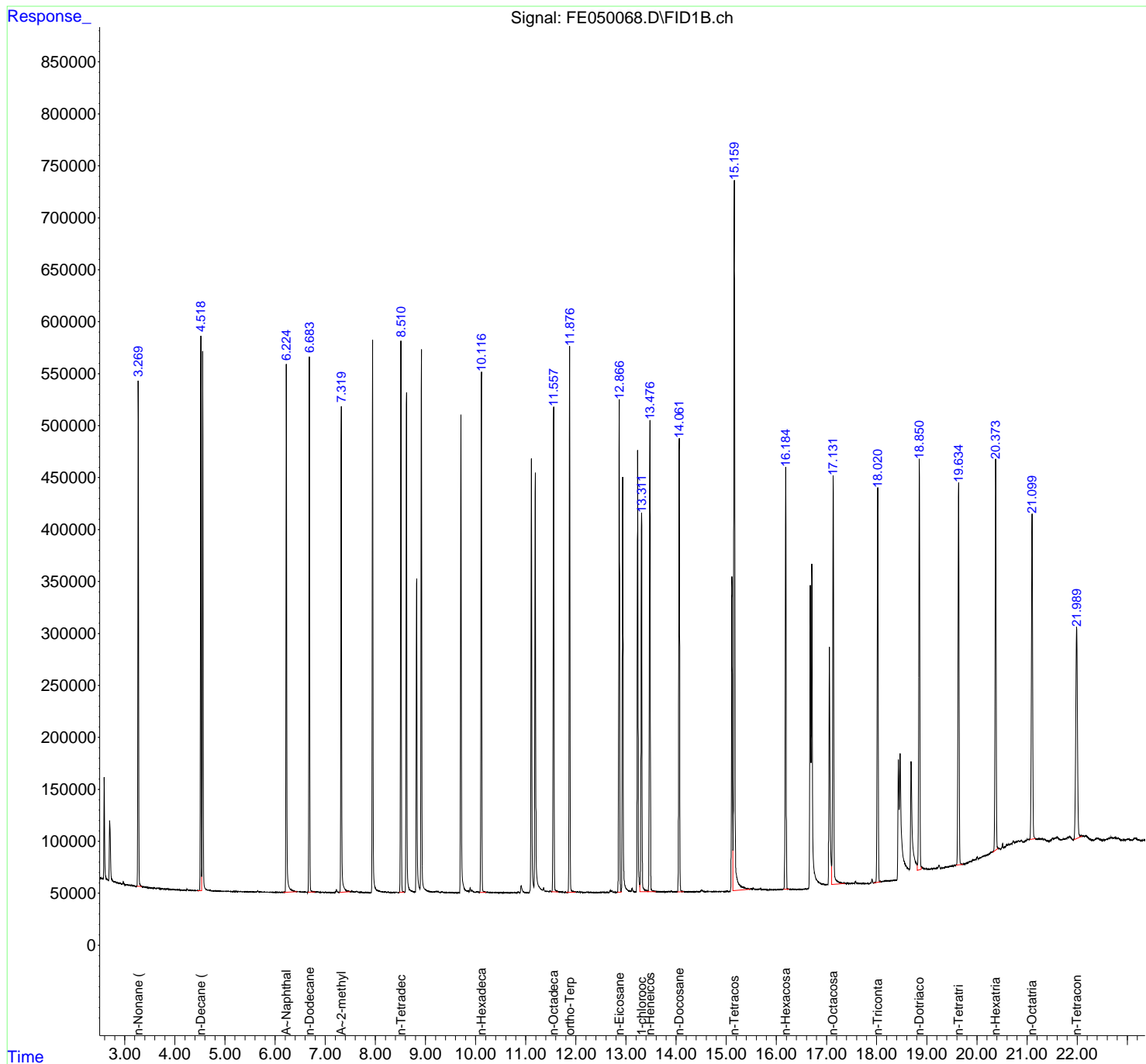
APPROVED

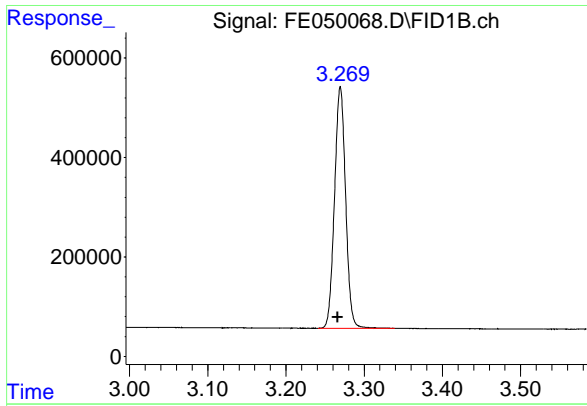
Reviewed By :Yogesh Patel 09/13/2024

Supervised By :Ankita Jodhani 09/13/2024

Integration File: autoint1.e
 Quant Time: Sep 13 01:20:05 2024
 Quant Method : Z:\pestpcbsrv\HPCHEM1\FID_E\methods\Aliphatic EPH 091024.M
 Quant Title : GC Extractables
 QLast Update : Mon Sep 09 17:11:47 2024
 Response via : Initial Calibration
 Integrator: ChemStation

Volume Inj. : 1 ul
 Signal Phase : Rxi-1ms
 Signal Info : 20M x 0.18mm x 0.18um





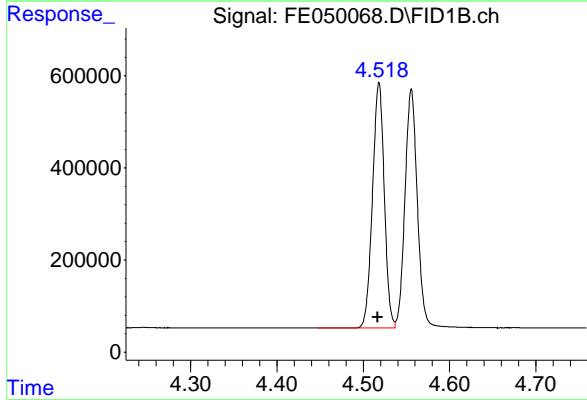
#1 n-Nonane (C9)

R.T.: 3.270 min
 Delta R.T.: 0.004 min
 Response: 4785429
 Conc: 35.30 ug/ml

Instrument : FID_E
 Client Sample Id : PB163324BS

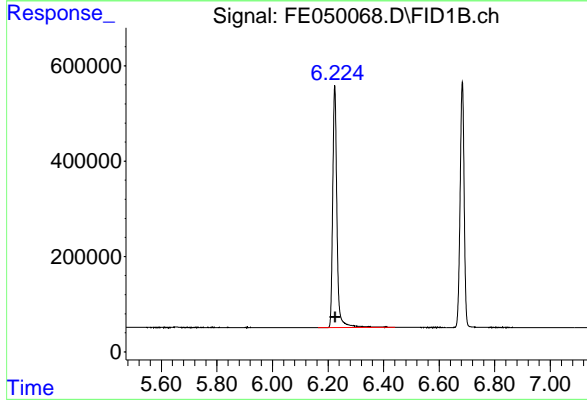
Manual Integrations
 APPROVED

Reviewed By :Yogesh Patel 09/13/2024
 Supervised By :Ankita Jodhani 09/13/2024



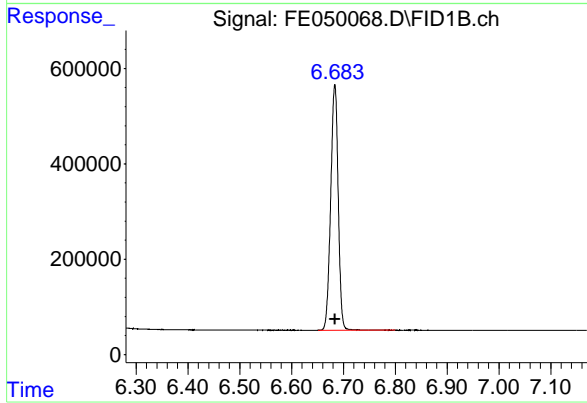
#2 n-Decane (C10)

R.T.: 4.518 min
 Delta R.T.: 0.001 min
 Response: 5056291
 Conc: 36.64 ug/ml



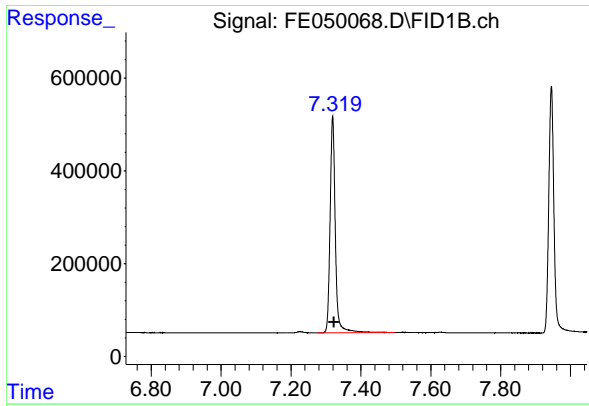
#3 A~Naphthalene (C11.7)

R.T.: 6.224 min
 Delta R.T.: -0.003 min
 Response: 5382568
 Conc: 38.46 ug/ml



#4 n-Dodecane (C12)

R.T.: 6.683 min
 Delta R.T.: 0.000 min
 Response: 5179076
 Conc: 37.45 ug/ml



#5 A~2-methylnaphthalene (C12.89)

R.T.: 7.319 min
 Delta R.T.: -0.004 min
 Response: 4864915
 Conc: 37.01 ug/ml

Instrument :

FID_E

ClientSampleId :

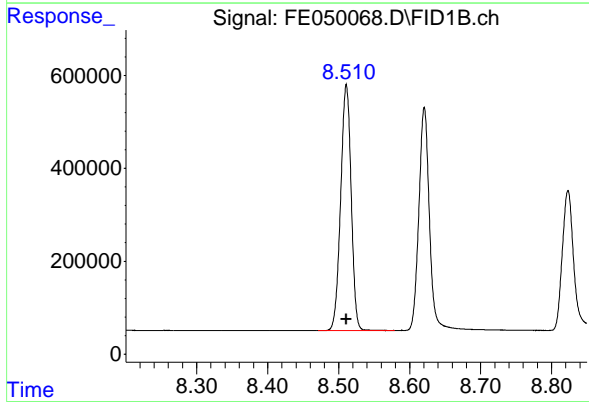
PB163324BS

Manual Integrations

APPROVED

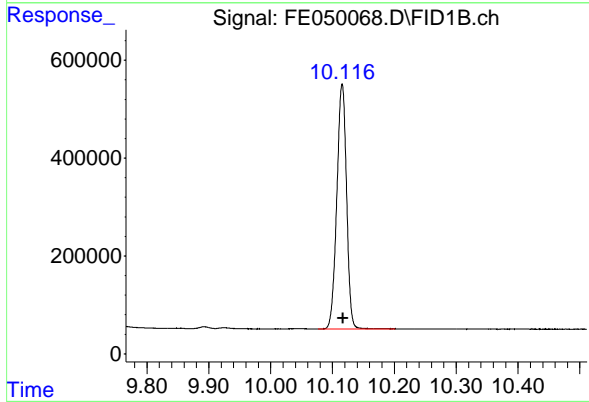
Reviewed By :Yogesh Patel 09/13/2024

Supervised By :Ankita Jodhani 09/13/2024



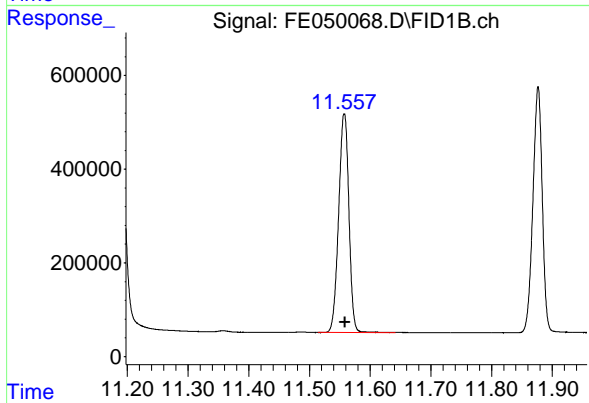
#6 n-Tetradecane (C14)

R.T.: 8.511 min
 Delta R.T.: 0.000 min
 Response: 5438932
 Conc: 39.94 ug/ml



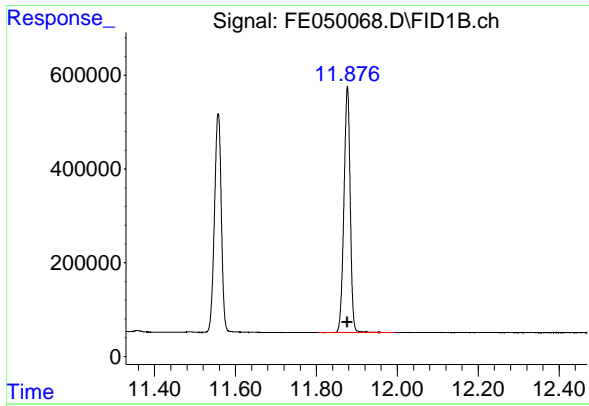
#7 n-Hexadecane (C16)

R.T.: 10.116 min
 Delta R.T.: -0.001 min
 Response: 5485577
 Conc: 39.49 ug/ml



#8 n-Octadecane (C18)

R.T.: 11.557 min
 Delta R.T.: -0.001 min
 Response: 5485607
 Conc: 39.15 ug/ml



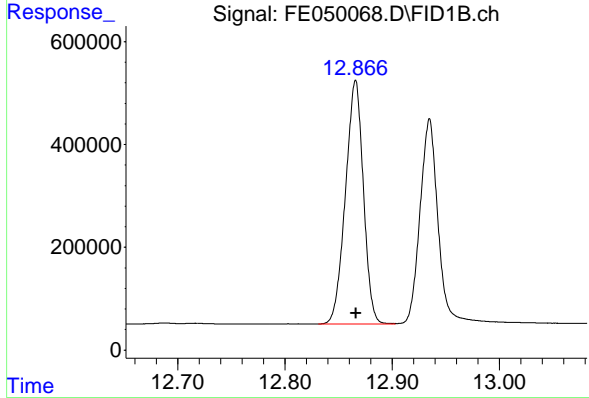
#9 ortho-Terphenyl (SURR)

R.T.: 11.877 min
 Delta R.T.: 0.000 min
 Response: 5645061
 Conc: 37.94 ug/ml

Instrument : FID_E
 Client Sample Id : PB163324BS

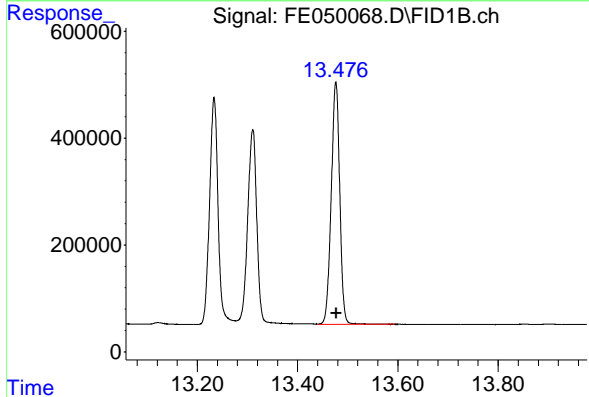
Manual Integrations
 APPROVED

Reviewed By :Yogesh Patel 09/13/2024
 Supervised By :Ankita Jodhani 09/13/2024



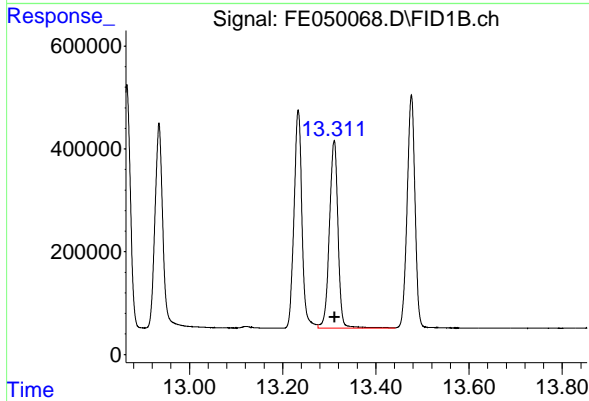
#10 n-Eicosane (C20)

R.T.: 12.866 min
 Delta R.T.: 0.000 min
 Response: 5496295
 Conc: 40.97 ug/ml



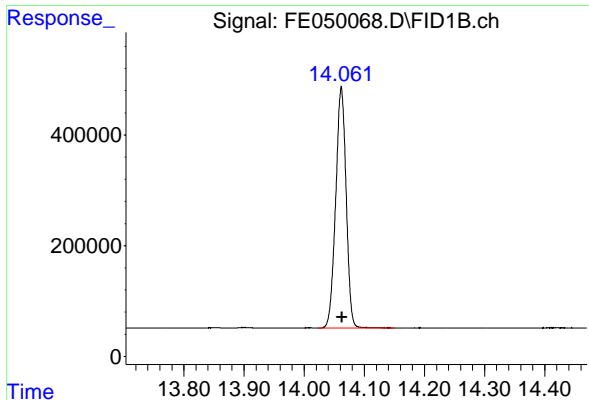
#11 n-Heneicosane (C21)

R.T.: 13.476 min
 Delta R.T.: 0.000 min
 Response: 5331765
 Conc: 40.58 ug/ml



#12 1-chlorooctadecane (SURR)

R.T.: 13.310 min
 Delta R.T.: -0.001 min
 Response: 4693530
 Conc: 41.78 ug/ml



#13 n-Docosane (C22)

R.T.: 14.062 min
 Delta R.T.: -0.001 min
 Response: 5248727
 Conc: 40.31 ug/ml

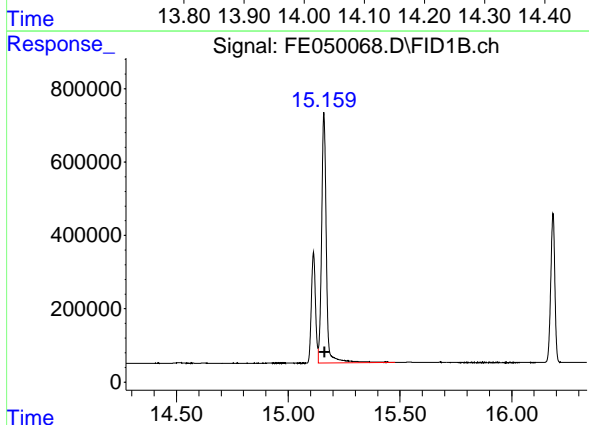
Instrument :

FID_E

Client Sample Id :
 PB163324BS

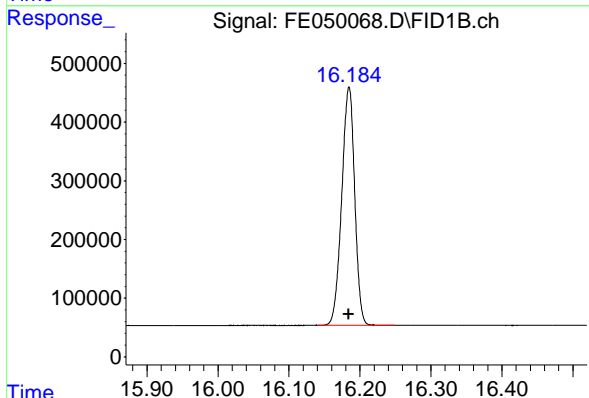
Manual Integrations
 APPROVED

Reviewed By :Yogesh Patel 09/13/2024
 Supervised By :Ankita Jodhani 09/13/2024



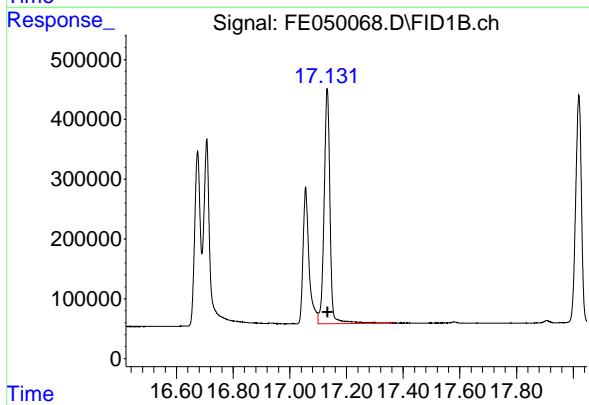
#14 n-Tetracosane (C24)

R.T.: 15.160 min
 Delta R.T.: -0.005 min
 Response: 10086987
 Conc: 77.24 ug/ml



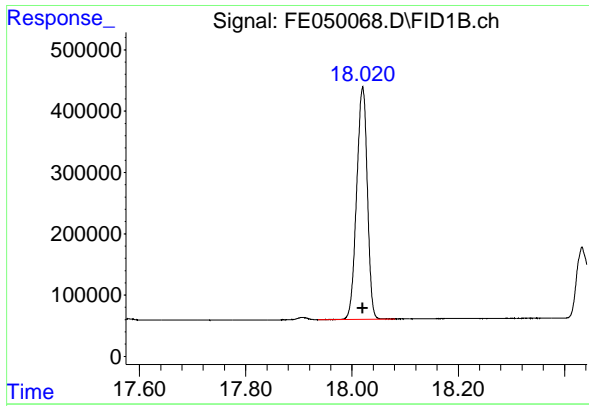
#15 n-Hexacosane (C26)

R.T.: 16.184 min
 Delta R.T.: 0.000 min
 Response: 5146374
 Conc: 40.23 ug/ml



#16 n-Octacosane (C28)

R.T.: 17.132 min
 Delta R.T.: -0.001 min
 Response: 5683601
 Conc: 44.12 ug/ml



#17 n-Tricontane (C30)

R.T.: 18.020 min
 Delta R.T.: 0.000 min
 Response: 5287357
 Conc: 39.54 ug/ml

Instrument :

FID_E

Client Sample Id :

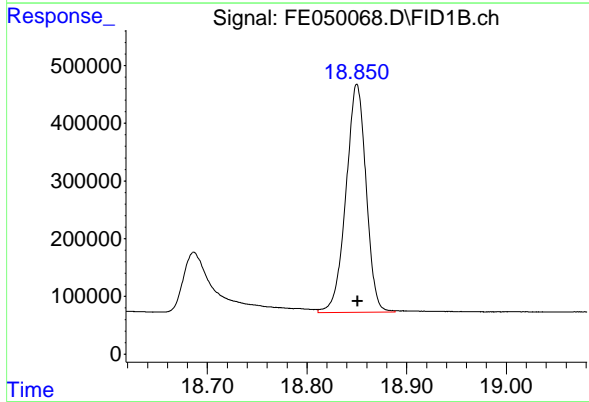
PB163324BS

Manual Integrations

APPROVED

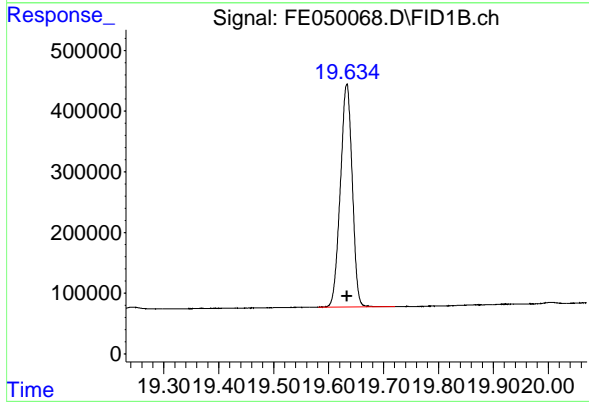
Reviewed By :Yogesh Patel 09/13/2024

Supervised By :Ankita Jodhani 09/13/2024



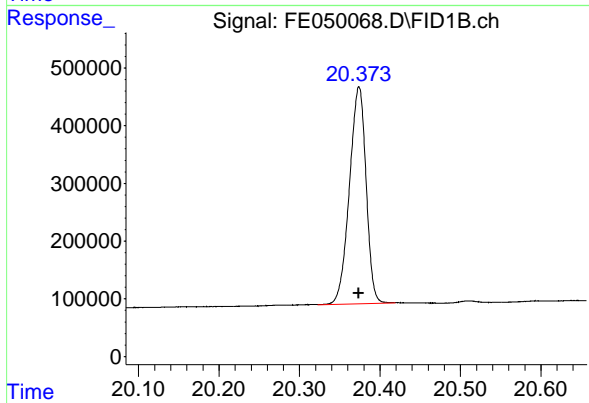
#18 n-Dotriacontane (C32)

R.T.: 18.850 min
 Delta R.T.: -0.001 min
 Response: 5551810
 Conc: 41.66 ug/ml m



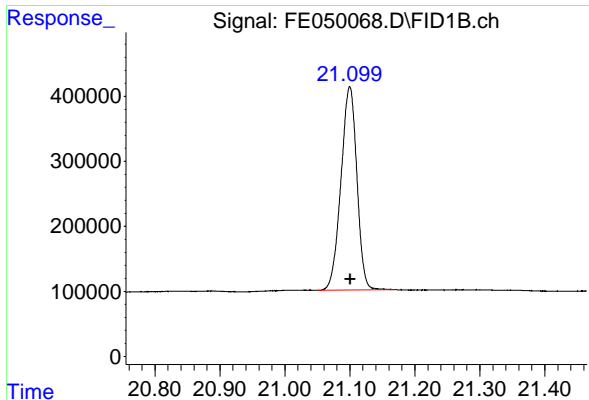
#19 n-Tetracontane (C34)

R.T.: 19.633 min
 Delta R.T.: 0.000 min
 Response: 5508335
 Conc: 44.58 ug/ml



#20 n-Hexatriacontane (C36)

R.T.: 20.373 min
 Delta R.T.: 0.000 min
 Response: 5404160
 Conc: 48.71 ug/ml m



#21 n-Octatriacontane (C38)

R.T.: 21.100 min
 Delta R.T.: -0.001 min
 Response: 5331610
 Conc: 48.35 ug/ml

Instrument :

FID_E

ClientSampleId :

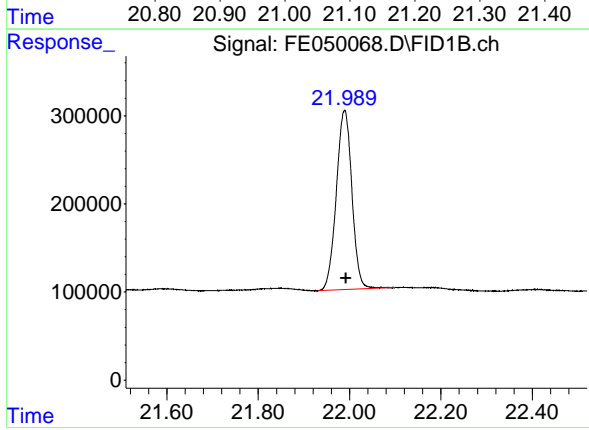
PB163324BS

Manual Integrations

APPROVED

Reviewed By :Yogesh Patel 09/13/2024

Supervised By :Ankita Jodhani 09/13/2024



#22 n-Tetracontane (C40)

R.T.: 21.989 min
 Delta R.T.: -0.003 min
 Response: 4831853
 Conc: 44.40 ug/ml