

Data Path : Z:\pestpcbsrv\HPCHEM1\FID\_E\Data\FE091422AL\  
 Data File : FE037561.D  
 Signal(s) : FID1B.ch  
 Acq On : 14 Sep 2022 22:44  
 Operator : YP\AJ  
 Sample : N4578-39  
 Misc :  
 ALS Vial : 24 Sample Multiplier: 1

Instrument :  
 FID\_E  
 ClientSampleId :  
 CHERRY-HILL-21

Integration File: autoint1.e  
 Quant Time: Sep 15 04:51:22 2022  
 Quant Method : Z:\pestpcbsrv\HPCHEM1\FID\_D\methods\Aliphatic EPH 082922.M  
 Quant Title : GC Extractables  
 QLast Update : Tue Aug 30 06:54:11 2022  
 Response via : Initial Calibration  
 Integrator: ChemStation

Volume Inj. : 1 ul  
 Signal Phase : Rxi-1ms  
 Signal Info : 20M x 0.18mm x 0.18um

Compound	R.T.	Response	Conc Units
-----			
System Monitoring Compounds			
9) S ortho-Terphenyl (SURR)	11.630	5431035	32.138 ug/ml
Spiked Amount	50.000	Recovery	= 64.28%
12) S 1-chlorooctadecane (S...	13.052	4078151	31.687 ug/ml
Spiked Amount	50.000	Recovery	= 63.37%

Target Compounds

(f)=RT Delta > 1/2 Window

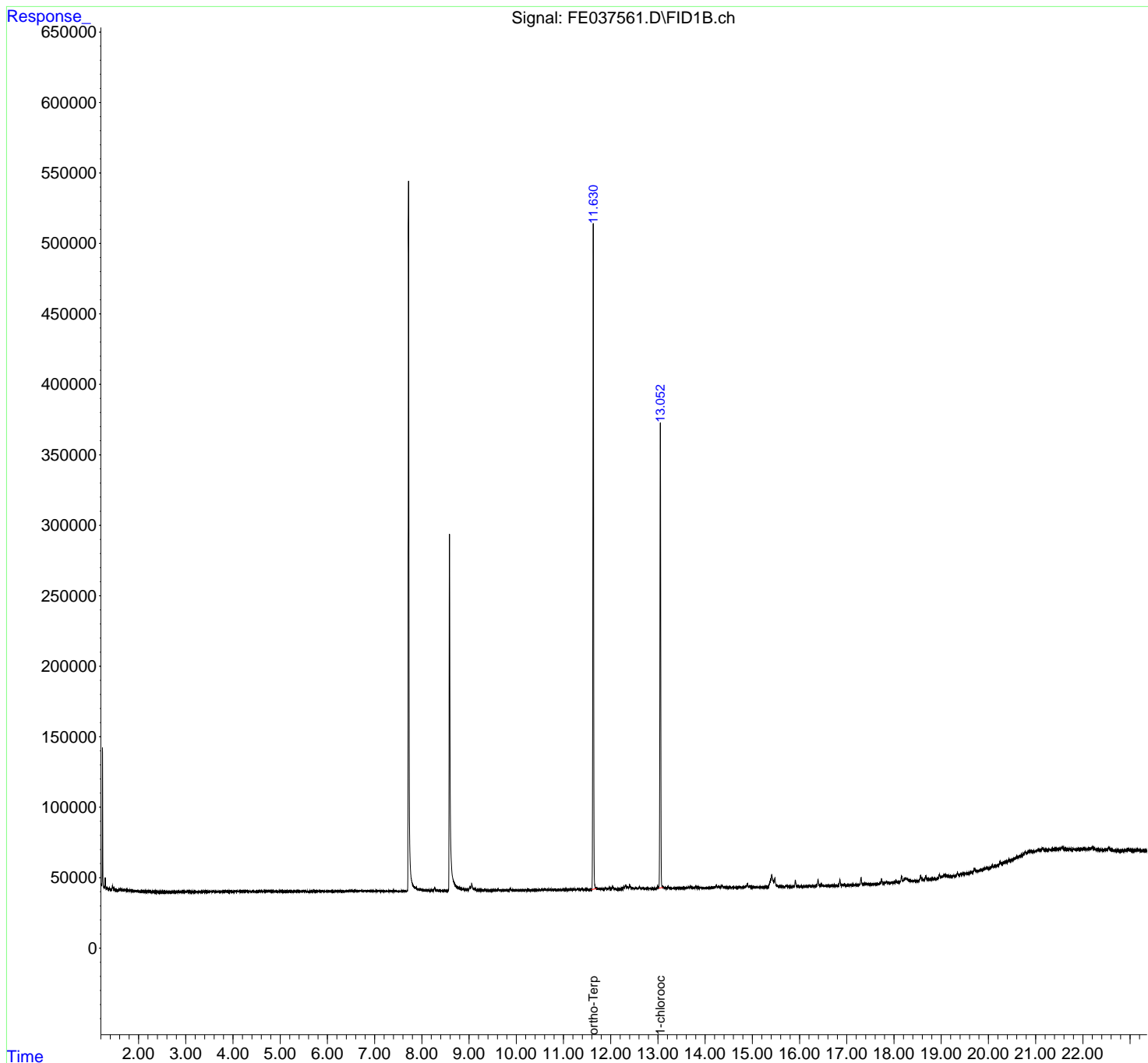
(m)=manual int.

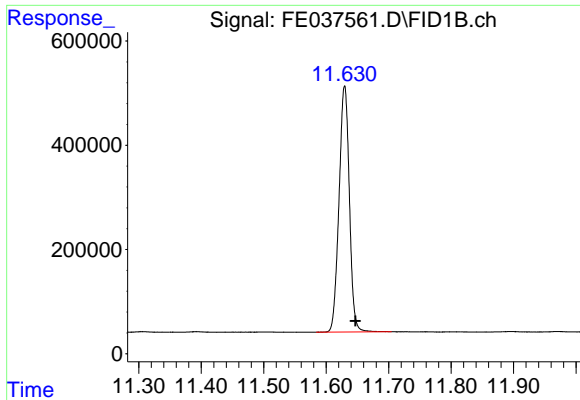
Data Path : Z:\pestpcbsrv\HPCHEM1\FID\_E\Data\FE091422AL\  
 Data File : FE037561.D  
 Signal(s) : FID1B.ch  
 Acq On : 14 Sep 2022 22:44  
 Operator : YP\AJ  
 Sample : N4578-39  
 Misc :  
 ALS Vial : 24 Sample Multiplier: 1

Instrument :  
 FID\_E  
 ClientSampleId :  
 CHERRY-HILL-21

Integration File: autoint1.e  
 Quant Time: Sep 15 04:51:22 2022  
 Quant Method : Z:\pestpcbsrv\HPCHEM1\FID\_D\methods\Aliphatic EPH 082922.M  
 Quant Title : GC Extractables  
 QLast Update : Tue Aug 30 06:54:11 2022  
 Response via : Initial Calibration  
 Integrator: ChemStation

Volume Inj. : 1 ul  
 Signal Phase : Rxi-1ms  
 Signal Info : 20M x 0.18mm x 0.18um

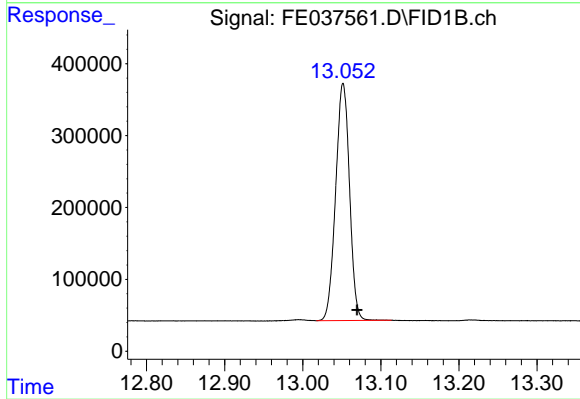




#9 ortho-Terphenyl (SURR)

R.T.: 11.630 min  
Delta R.T.: -0.017 min  
Response: 5431035  
Conc: 32.14 ug/ml

Instrument :  
FID\_E  
ClientSampleId :  
CHERRY-HILL-21



#12 1-chlorooctadecane (SURR)

R.T.: 13.052 min  
Delta R.T.: -0.018 min  
Response: 4078151  
Conc: 31.69 ug/ml