

Data Path : Z:\pestpcbsrv\HPCHEM1\FID_E\Data\FE091422AL\
 Data File : FE037580.D
 Signal(s) : FID1B.ch
 Acq On : 15 Sep 2022 08:55
 Operator : YP\AJ
 Sample : N4579-09
 Misc :
 ALS Vial : 41 Sample Multiplier: 1

Instrument :
 FID_E
ClientSampleId :
 CHERRY-HILL-27

Integration File: autoint1.e
 Quant Time: Sep 15 09:34:04 2022
 Quant Method : Z:\pestpcbsrv\HPCHEM1\FID_D\methods\Aliphatic EPH 082922.M
 Quant Title : GC Extractables
 QLast Update : Tue Aug 30 06:54:11 2022
 Response via : Initial Calibration
 Integrator: ChemStation

Volume Inj. : 1 ul
 Signal Phase : Rxi-1ms
 Signal Info : 20M x 0.18mm x 0.18um

Compound	R.T.	Response	Conc Units

System Monitoring Compounds			
9) S ortho-Terphenyl (SURR)	11.629	6096135	36.073 ug/ml
Spiked Amount	50.000	Recovery	= 72.15%
12) S 1-chlorooctadecane (S...	13.051	4699377	36.514 ug/ml
Spiked Amount	50.000	Recovery	= 73.03%

Target Compounds

(f)=RT Delta > 1/2 Window

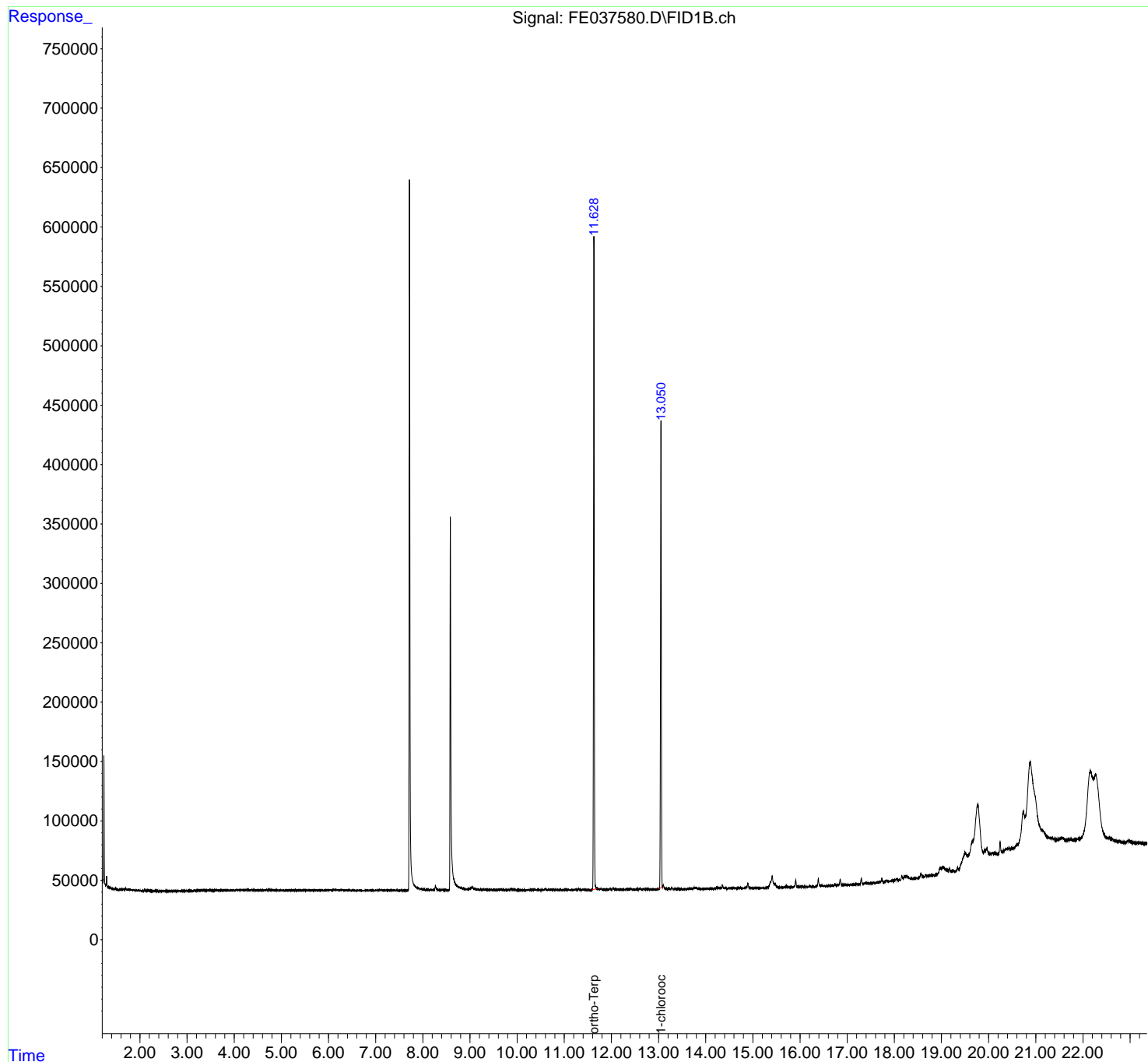
(m)=manual int.

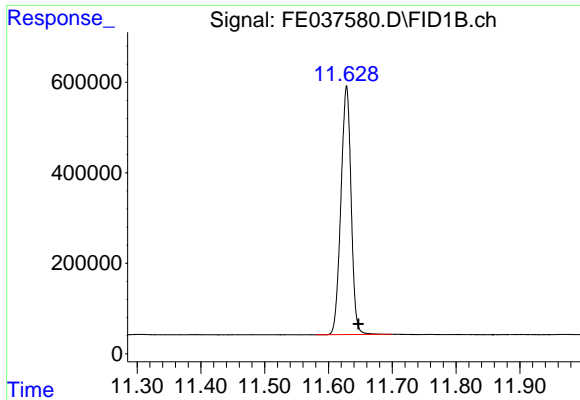
Data Path : Z:\pestpcbsrv\HPCHEM1\FID_E\Data\FE091422AL\
Data File : FE037580.D
Signal(s) : FID1B.ch
Acq On : 15 Sep 2022 08:55
Operator : YP\AJ
Sample : N4579-09
Misc :
ALS Vial : 41 Sample Multiplier: 1

Instrument :
FID_E
ClientSampleId :
CHERRY-HILL-27

Integration File: autoint1.e
Quant Time: Sep 15 09:34:04 2022
Quant Method : Z:\pestpcbsrv\HPCHEM1\FID_D\methods\Aliphatic EPH 082922.M
Quant Title : GC Extractables
QLast Update : Tue Aug 30 06:54:11 2022
Response via : Initial Calibration
Integrator: ChemStation

Volume Inj. : 1 ul
Signal Phase : Rxi-1ms
Signal Info : 20M x 0.18mm x 0.18um

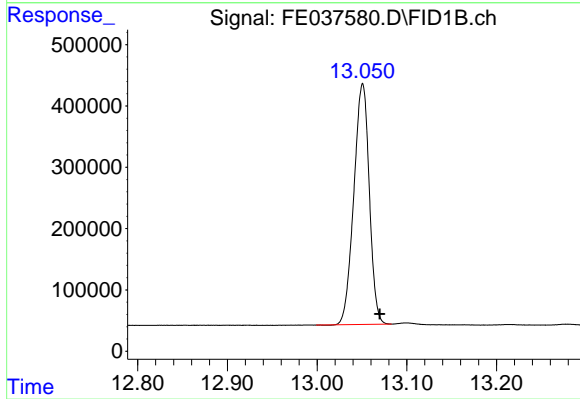




#9 ortho-Terphenyl (SURR)

R.T.: 11.629 min
Delta R.T.: -0.018 min
Response: 6096135
Conc: 36.07 ug/ml

Instrument :
FID_E
ClientSampleId :
CHERRY-HILL-27



#12 1-chlorooctadecane (SURR)

R.T.: 13.051 min
Delta R.T.: -0.019 min
Response: 4699377
Conc: 36.51 ug/ml