

Data Path : Z:\pestpcbsrv\HPCHEM1\FID_E\Data\FE091424AL\
 Data File : FE050085.D
 Signal(s) : FID1B.ch
 Acq On : 13 Sep 2024 12:47
 Operator : YP\AJ
 Sample : 20 PPM ALIPHATIC HC STD
 Misc :
 ALS Vial : 2 Sample Multiplier: 1

Instrument :
 FID_E
 ClientSampleId :

Integration File: autoint1.e
 Quant Time: Sep 14 02:10:53 2024
 Quant Method : Z:\pestpcbsrv\HPCHEM1\FID_E\methods\Aliphatic EPH 091024.M
 Quant Title : GC Extractables
 QLast Update : Mon Sep 09 17:11:47 2024
 Response via : Initial Calibration
 Integrator: ChemStation

Volume Inj. : 1 ul
 Signal Phase : Rxi-1ms
 Signal Info : 20M x 0.18mm x 0.18um

Compound	R.T.	Response	Conc Units

System Monitoring Compounds			
9) S ortho-Terphenyl (SURR)	11.876	3033983	20.392 ug/ml
Spiked Amount	50.000	Recovery	= 40.78%
12) S 1-chlorooctadecane (S...	13.310	2288368	20.372 ug/ml
Spiked Amount	50.000	Recovery	= 40.74%
Target Compounds			
1) T n-Nonane (C9)	3.264	2711422	20.004 ug/ml
2) T n-Decane (C10)	4.515	2781000	20.151 ug/ml
3) T A~Naphthalene (C11.7)	6.224	2852104	20.377 ug/ml
4) T n-Dodecane (C12)	6.682	2794100	20.206 ug/ml
5) T A~2-methylnaphthalene...	7.320	2678881	20.381 ug/ml
6) T n-Tetradecane (C14)	8.509	2755251	20.234 ug/ml
7) T n-Hexadecane (C16)	10.115	2830620	20.378 ug/ml
8) T n-Octadecane (C18)	11.557	2846384	20.317 ug/ml
10) T n-Eicosane (C20)	12.865	2726935	20.328 ug/ml
11) T n-Heneicosane (C21)	13.476	2674101	20.351 ug/ml
13) T n-Docosane (C22)	14.061	2657350	20.407 ug/ml
14) T n-Tetracosane (C24)	15.163	2673375	20.471 ug/ml
15) T n-Hexacosane (C26)	16.183	2627504	20.537 ug/ml
16) T n-Octacosane (C28)	17.131	2639813	20.494 ug/ml
17) T n-Tricontane (C30)	18.017	2821542	21.100 ug/ml
18) T n-Dotriacontane (C32)	18.849	2792391	20.955 ug/ml
19) T n-Tetratriacontane (C34)	19.633	2658590	21.516 ug/ml
20) T n-Hexatriacontane (C36)	20.372	2730140	24.607 ug/ml
21) T n-Octatriacontane (C38)	21.099	2213304	20.070 ug/ml
22) T n-Tetracontane (C40)	21.989	2096312	19.265 ug/ml

(f)=RT Delta > 1/2 Window

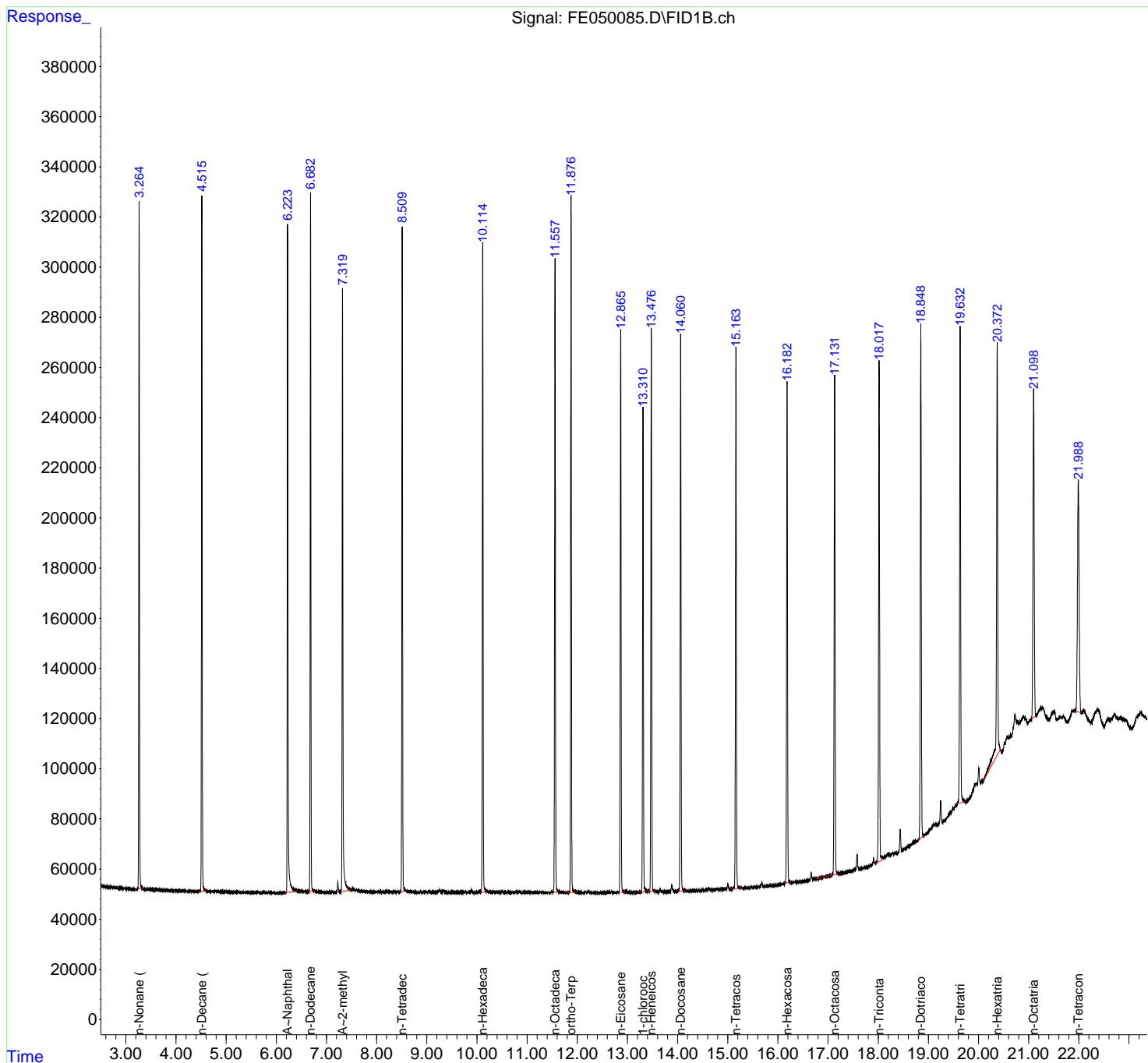
(m)=manual int.

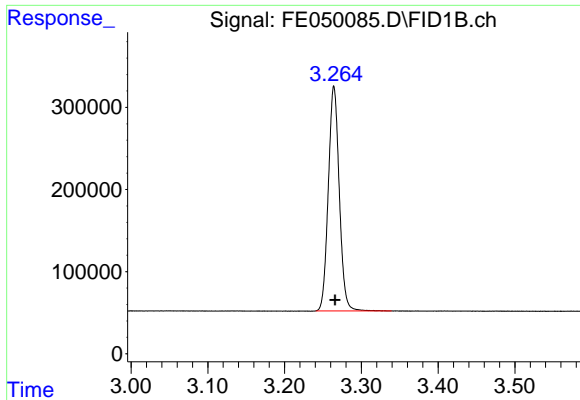
Data Path : Z:\pestpcbsrv\HPCHEM1\FID_E\Data\FE091424AL\
 Data File : FE050085.D
 Signal(s) : FID1B.ch
 Acq On : 13 Sep 2024 12:47
 Operator : YP\AJ
 Sample : 20 PPM ALIPHATIC HC STD
 Misc :
 ALS Vial : 2 Sample Multiplier: 1

Instrument :
 FID_E
 ClientSampleId :

Integration File: autoint1.e
 Quant Time: Sep 14 02:10:53 2024
 Quant Method : Z:\pestpcbsrv\HPCHEM1\FID_E\methods\Aliphatic EPH 091024.M
 Quant Title : GC Extractables
 QLast Update : Mon Sep 09 17:11:47 2024
 Response via : Initial Calibration
 Integrator: ChemStation

Volume Inj. : 1 ul
 Signal Phase : Rxi-1ms
 Signal Info : 20M x 0.18mm x 0.18um

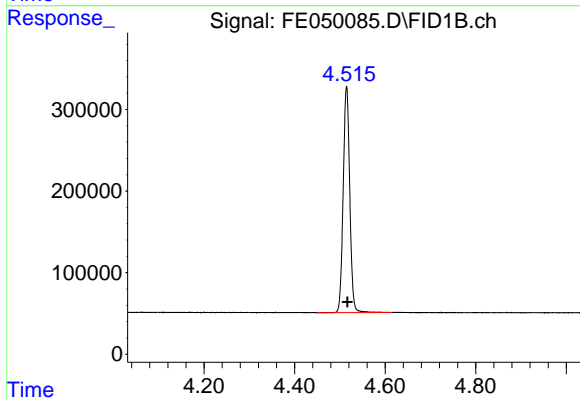




#1 n-Nonane (C9)

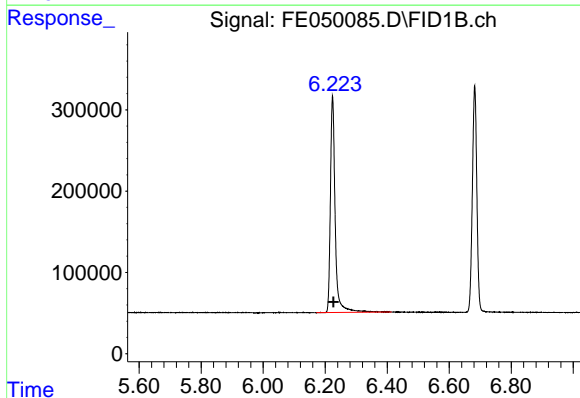
R.T.: 3.264 min
 Delta R.T.: -0.002 min
 Response: 2711422
 Conc: 20.00 ug/ml

Instrument :
 FID_E
 ClientSampleId :



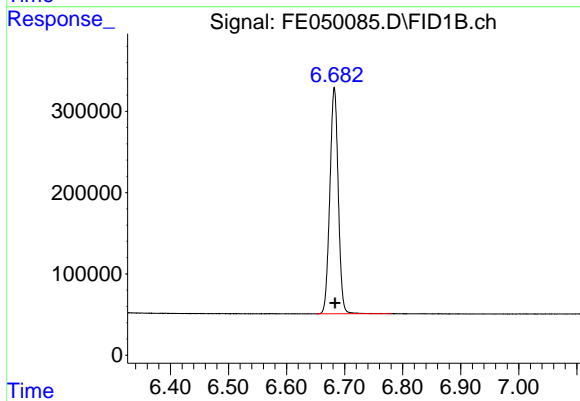
#2 n-Decane (C10)

R.T.: 4.515 min
 Delta R.T.: -0.002 min
 Response: 2781000
 Conc: 20.15 ug/ml



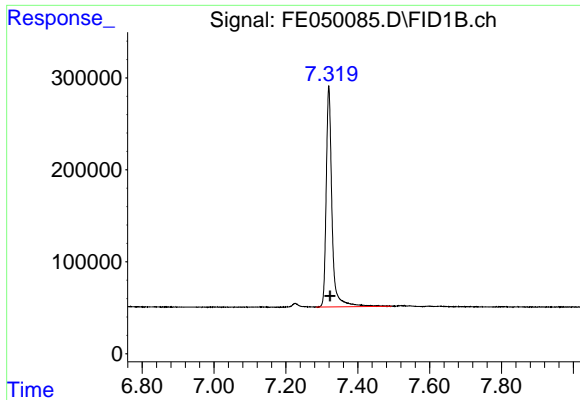
#3 A~Naphthalene (C11.7)

R.T.: 6.224 min
 Delta R.T.: -0.003 min
 Response: 2852104
 Conc: 20.38 ug/ml



#4 n-Dodecane (C12)

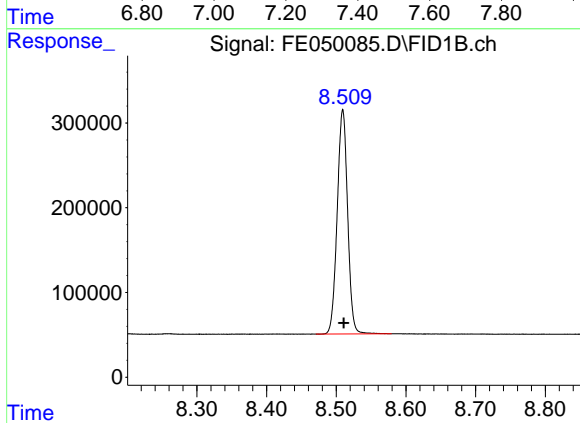
R.T.: 6.682 min
 Delta R.T.: -0.002 min
 Response: 2794100
 Conc: 20.21 ug/ml



#5 A~2-methylnaphthalene (C12.89)

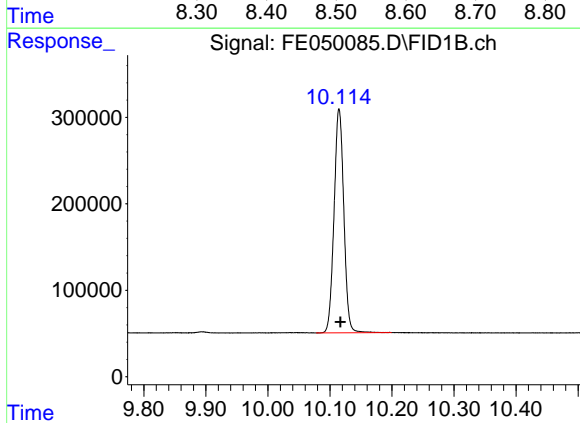
R.T.: 7.320 min
 Delta R.T.: -0.003 min
 Response: 2678881
 Conc: 20.38 ug/ml

Instrument :
 FID_E
 ClientSampleId :



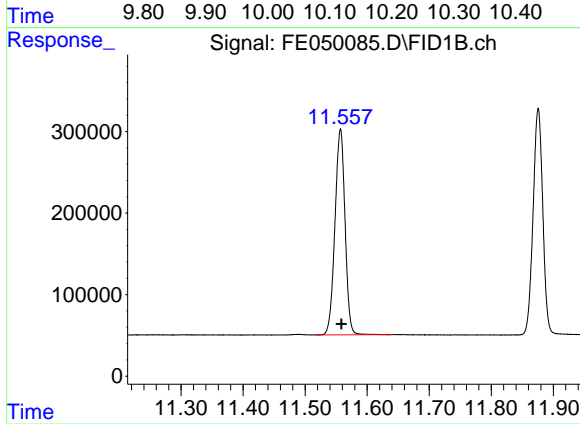
#6 n-Tetradecane (C14)

R.T.: 8.509 min
 Delta R.T.: -0.001 min
 Response: 2755251
 Conc: 20.23 ug/ml



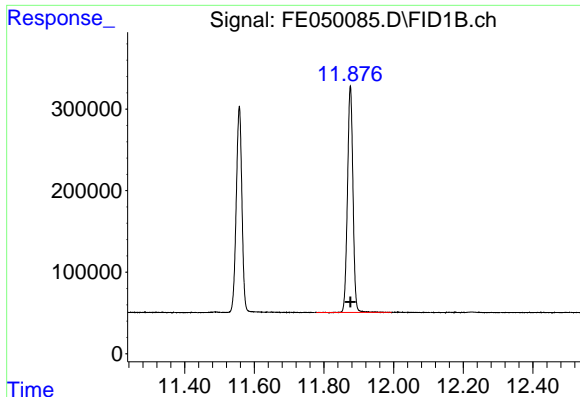
#7 n-Hexadecane (C16)

R.T.: 10.115 min
 Delta R.T.: -0.002 min
 Response: 2830620
 Conc: 20.38 ug/ml



#8 n-Octadecane (C18)

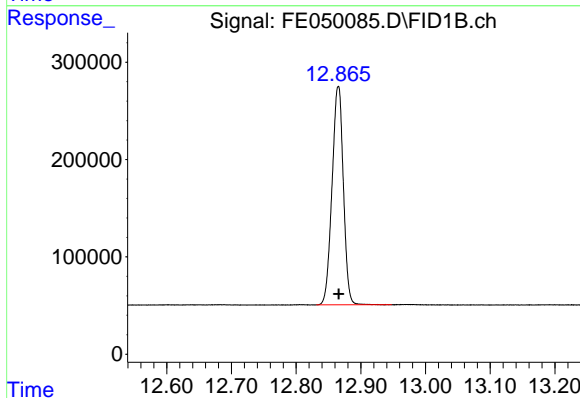
R.T.: 11.557 min
 Delta R.T.: -0.002 min
 Response: 2846384
 Conc: 20.32 ug/ml



#9 ortho-Terphenyl (SURR)

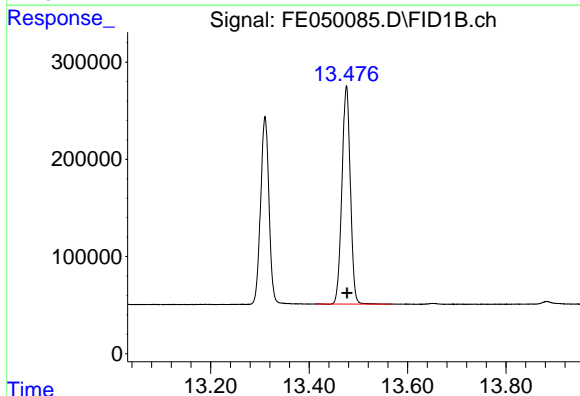
R.T.: 11.876 min
 Delta R.T.: 0.000 min
 Response: 3033983
 Conc: 20.39 ug/ml

Instrument :
 FID_E
 ClientSampleId :



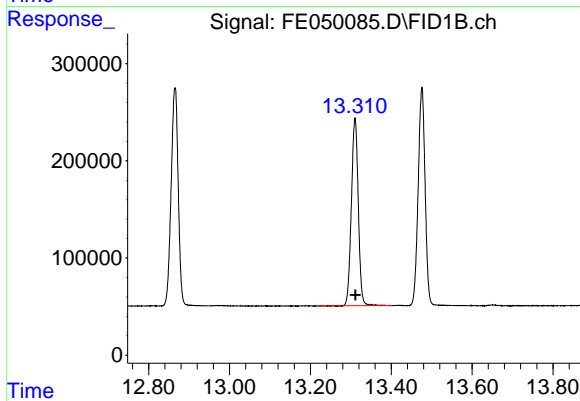
#10 n-Eicosane (C20)

R.T.: 12.865 min
 Delta R.T.: 0.000 min
 Response: 2726935
 Conc: 20.33 ug/ml



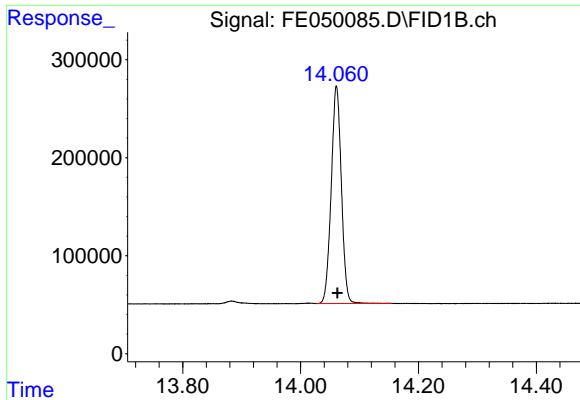
#11 n-Heneicosane (C21)

R.T.: 13.476 min
 Delta R.T.: -0.002 min
 Response: 2674101
 Conc: 20.35 ug/ml



#12 1-chlorooctadecane (SURR)

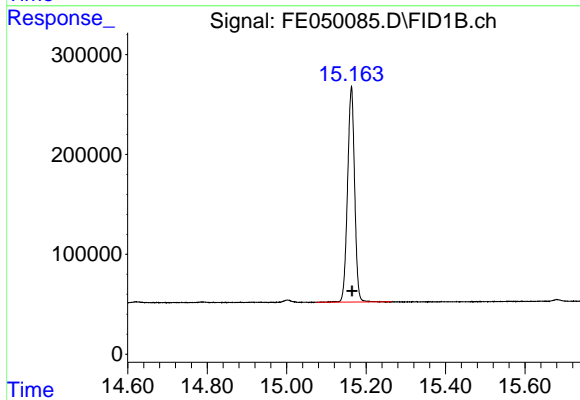
R.T.: 13.310 min
 Delta R.T.: -0.001 min
 Response: 2288368
 Conc: 20.37 ug/ml



#13 n-Docosane (C22)

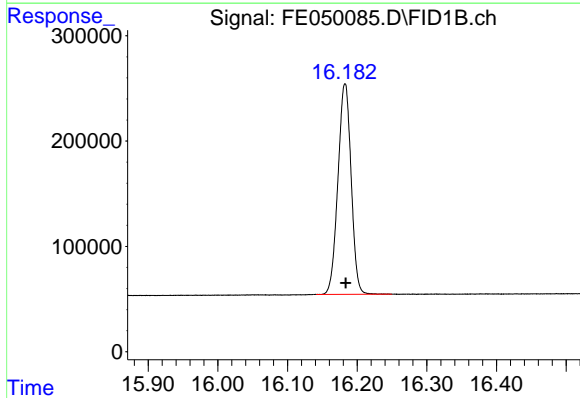
R.T.: 14.061 min
 Delta R.T.: -0.002 min
 Response: 2657350
 Conc: 20.41 ug/ml

Instrument :
 FID_E
 ClientSampleId :



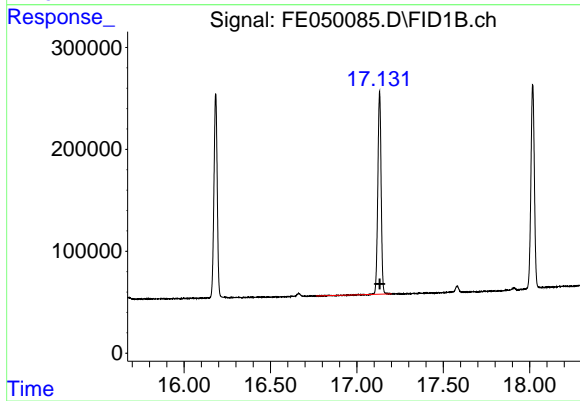
#14 n-Tetracosane (C24)

R.T.: 15.163 min
 Delta R.T.: -0.001 min
 Response: 2673375
 Conc: 20.47 ug/ml



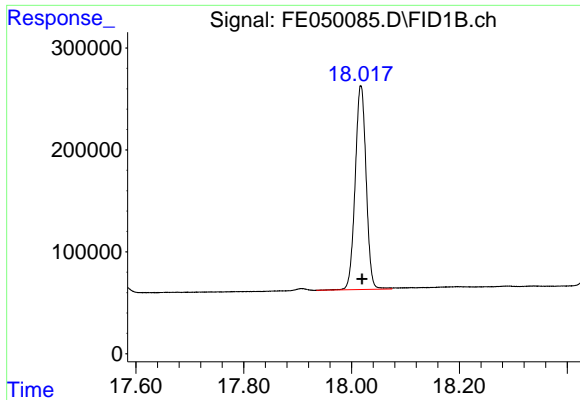
#15 n-Hexacosane (C26)

R.T.: 16.183 min
 Delta R.T.: -0.001 min
 Response: 2627504
 Conc: 20.54 ug/ml



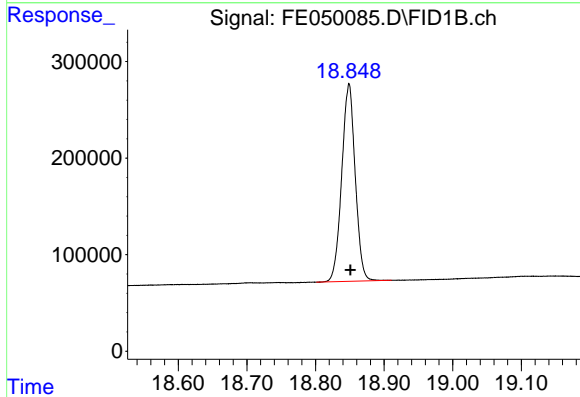
#16 n-Octacosane (C28)

R.T.: 17.131 min
 Delta R.T.: -0.002 min
 Response: 2639813
 Conc: 20.49 ug/ml

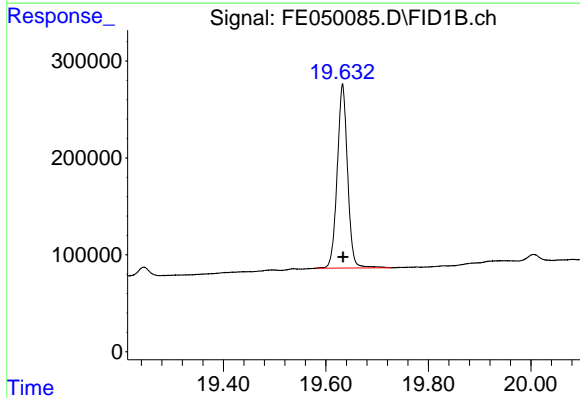


#17 n-Tricontane (C30)
R.T.: 18.017 min
Delta R.T.: -0.003 min
Response: 2821542
Conc: 21.10 ug/ml

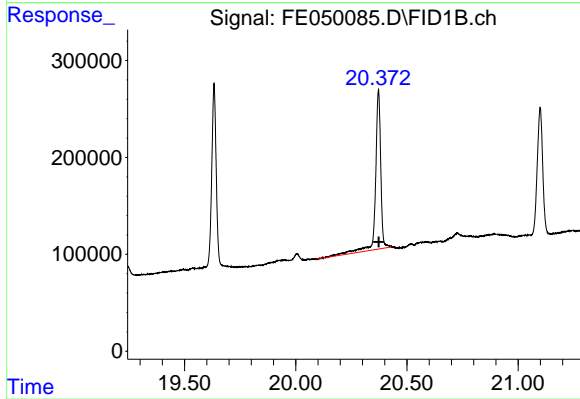
Instrument :
FID_E
ClientSampleId :



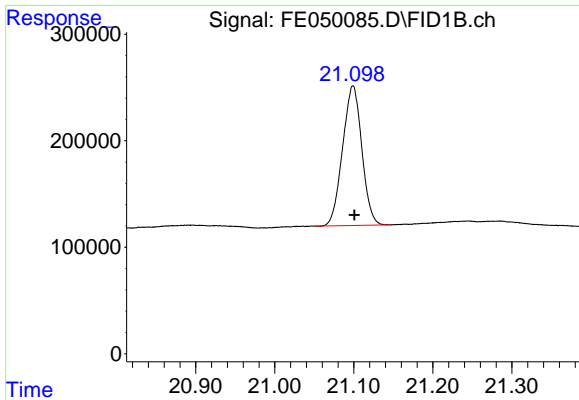
#18 n-Dotriacontane (C32)
R.T.: 18.849 min
Delta R.T.: -0.002 min
Response: 2792391
Conc: 20.95 ug/ml



#19 n-Tetratriacontane (C34)
R.T.: 19.633 min
Delta R.T.: -0.001 min
Response: 2658590
Conc: 21.52 ug/ml



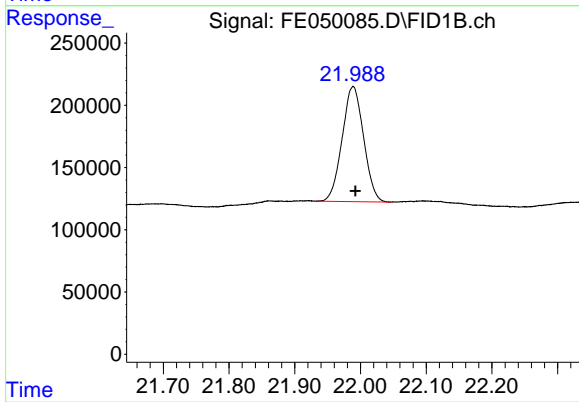
#20 n-Hexatriacontane (C36)
R.T.: 20.372 min
Delta R.T.: -0.002 min
Response: 2730140
Conc: 24.61 ug/ml



#21 n-Octatriacontane (C38)

R.T.: 21.099 min
Delta R.T.: -0.002 min
Response: 2213304
Conc: 20.07 ug/ml

Instrument :
FID_E
ClientSampleId :



#22 n-Tetracontane (C40)

R.T.: 21.989 min
Delta R.T.: -0.004 min
Response: 2096312
Conc: 19.26 ug/ml