

Data Path : Z:\pestpcbsrv\HPCHEM1\FID_E\Data\FE091424AL\
 Data File : FE050081.D
 Signal(s) : FID1B.ch
 Acq On : 13 Sep 2024 07:06
 Operator : YP\AJ
 Sample : 20 PPM ALIPHATIC HC STD
 Misc :
 ALS Vial : 6 Sample Multiplier: 1

Instrument :
 FID_E
ClientSampleId :
 20 PPM ALIPHATIC HC STD

Manual Integrations
APPROVED

Reviewed By :Yogesh Patel 09/16/2024
 Supervised By :Ankita Jodhani 09/16/2024

Integration File: autoint1.e
 Quant Time: Sep 14 02:10:22 2024
 Quant Method : Z:\pestpcbsrv\HPCHEM1\FID_E\methods\Aliphatic EPH 091024.M
 Quant Title : GC Extractables
 QLast Update : Mon Sep 09 17:11:47 2024
 Response via : Initial Calibration
 Integrator: ChemStation

Volume Inj. : 1 ul
 Signal Phase : Rxi-1ms
 Signal Info : 20M x 0.18mm x 0.18um

Compound	R.T.	Response	Conc Units

System Monitoring Compounds			
9) S ortho-Terphenyl (SURR)	11.876	3108101	20.891 ug/ml
Spiked Amount	50.000	Recovery =	41.78%
12) S 1-chlorooctadecane (S...	13.311	2335665	20.793 ug/ml
Spiked Amount	50.000	Recovery =	41.59%
Target Compounds			
1) T n-Nonane (C9)	3.264	2782985	20.532 ug/ml
2) T n-Decane (C10)	4.515	2849177	20.645 ug/ml
3) T A~Naphthalene (C11.7)	6.224	2919843	20.861 ug/ml
4) T n-Dodecane (C12)	6.683	2860823	20.688 ug/ml
5) T A~2-methylnaphthalene...	7.320	2755639	20.965 ug/ml
6) T n-Tetradecane (C14)	8.509	2816519	20.684 ug/ml
7) T n-Hexadecane (C16)	10.115	2895017	20.842 ug/ml
8) T n-Octadecane (C18)	11.557	2919276	20.837 ug/ml
10) T n-Eicosane (C20)	12.865	2798054	20.859 ug/ml
11) T n-Heneicosane (C21)	13.476	2741698	20.866 ug/ml
13) T n-Docosane (C22)	14.062	2728387	20.953 ug/ml
14) T n-Tetracosane (C24)	15.163	2720685	20.834 ug/ml
15) T n-Hexacosane (C26)	16.182	2673247	20.895 ug/ml
16) T n-Octacosane (C28)	17.132	2685953	20.852 ug/ml
17) T n-Tricontane (C30)	18.019	2806178	20.985 ug/ml
18) T n-Dotriacontane (C32)	18.850	2788398	20.925 ug/ml
19) T n-Tetratriacontane (C34)	19.633	2569719	20.797 ug/ml
20) T n-Hexatriacontane (C36)	20.372	2384111	21.488 ug/ml
21) T n-Octatriacontane (C38)	21.098	2258494	20.480 ug/ml
22) T n-Tetracontane (C40)	21.989	2072583	19.047 ug/ml

(f)=RT Delta > 1/2 Window

(m)=manual int.

Data Path : Z:\pestpcbsrv\HPCHEM1\FID_E\Data\FE091424AL\
 Data File : FE050081.D
 Signal(s) : FID1B.ch
 Acq On : 13 Sep 2024 07:06
 Operator : YP\AJ
 Sample : 20 PPM ALIPHATIC HC STD
 Misc :
 ALS Vial : 6 Sample Multiplier: 1

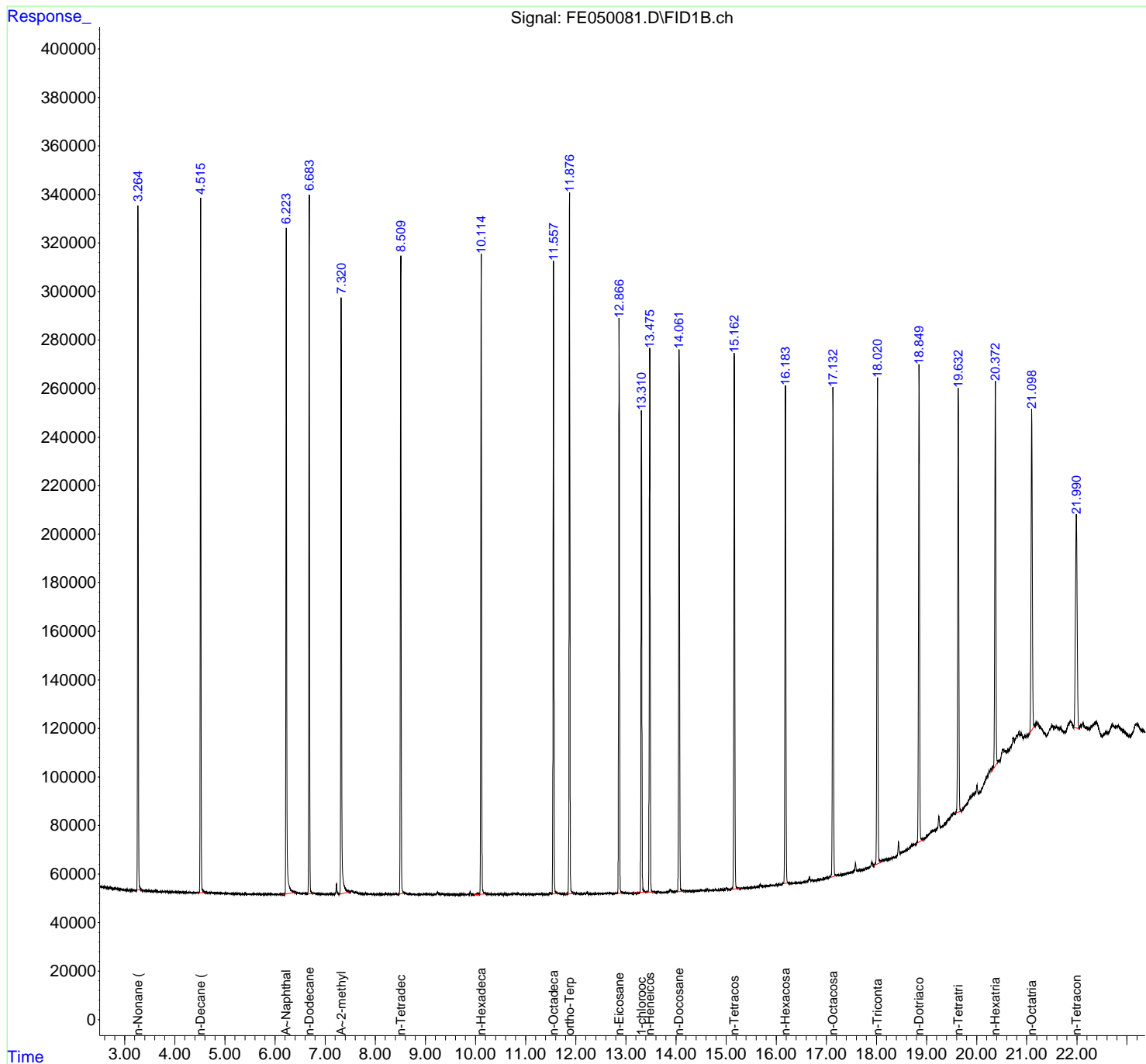
Instrument :
 FID_E
ClientSampleId :
 20 PPM ALIPHATIC HC STD

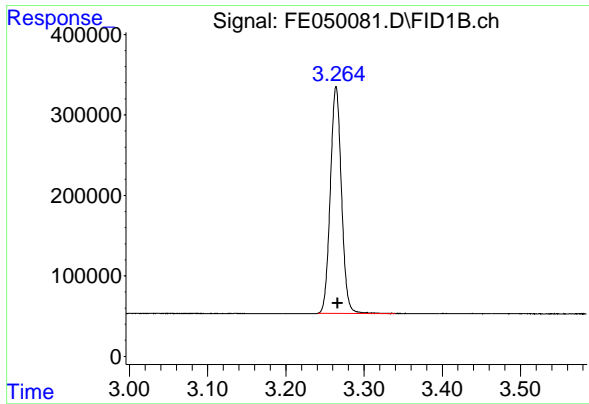
Manual Integrations
APPROVED

Reviewed By :Yogesh Patel 09/16/2024
 Supervised By :Ankita Jodhani 09/16/2024

Integration File: autoint1.e
 Quant Time: Sep 14 02:10:22 2024
 Quant Method : Z:\pestpcbsrv\HPCHEM1\FID_E\methods\Aliphatic EPH 091024.
 Quant Title : GC Extractables
 QLast Update : Mon Sep 09 17:11:47 2024
 Response via : Initial Calibration
 Integrator: ChemStation

Volume Inj. : 1 ul
 Signal Phase : Rxi-1ms
 Signal Info : 20M x 0.18mm x 0.18um





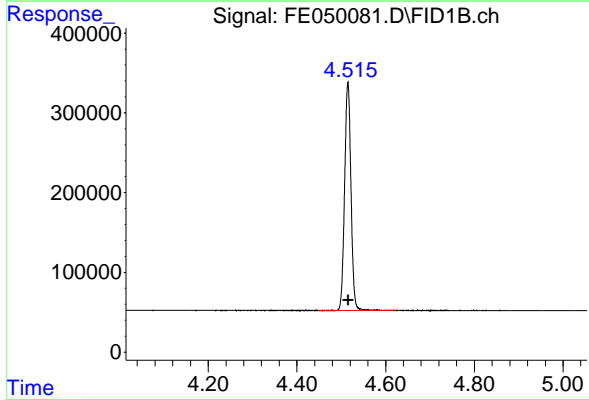
#1 n-Nonane (C9)

R.T.: 3.264 min
 Delta R.T.: -0.002 min
 Response: 2782985
 Conc: 20.53 ug/ml

Instrument : FID_E
 Client Sample Id : 20 PPM ALIPHATIC HC STD

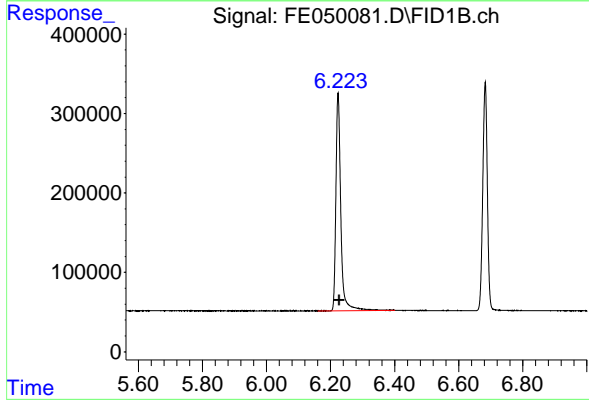
Manual Integrations
 APPROVED

Reviewed By :Yogesh Patel 09/16/2024
 Supervised By :Ankita Jodhani 09/16/2024



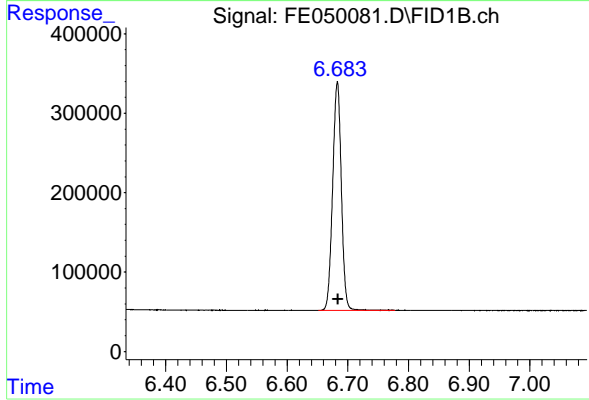
#2 n-Decane (C10)

R.T.: 4.515 min
 Delta R.T.: -0.002 min
 Response: 2849177
 Conc: 20.64 ug/ml



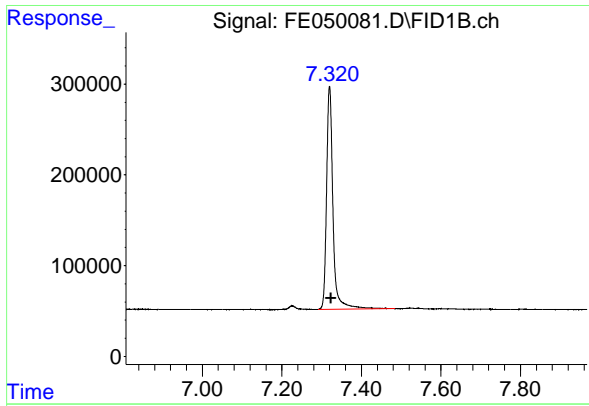
#3 A~Naphthalene (C11.7)

R.T.: 6.224 min
 Delta R.T.: -0.003 min
 Response: 2919843
 Conc: 20.86 ug/ml



#4 n-Dodecane (C12)

R.T.: 6.683 min
 Delta R.T.: -0.001 min
 Response: 2860823
 Conc: 20.69 ug/ml



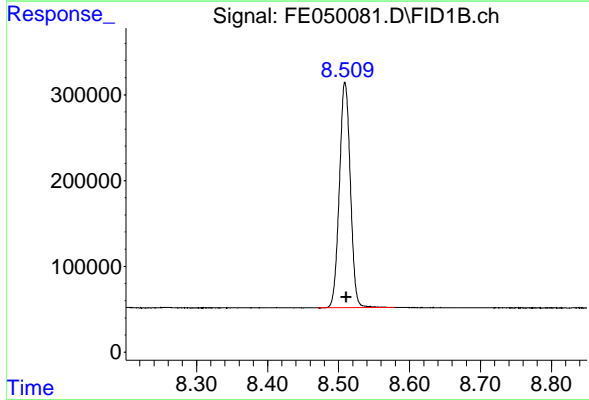
#5 A~2-methylnaphthalene (C12.89)

R.T.: 7.320 min
 Delta R.T.: -0.003 min
 Response: 2755639
 Conc: 20.97 ug/ml

Instrument : FID_E
 ClientSampleId : 20 PPM ALIPHATIC HC STD

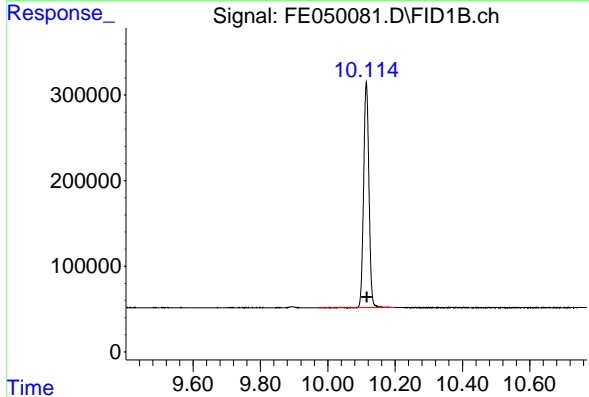
Manual Integrations
 APPROVED

Reviewed By :Yogesh Patel 09/16/2024
 Supervised By :Ankita Jodhani 09/16/2024



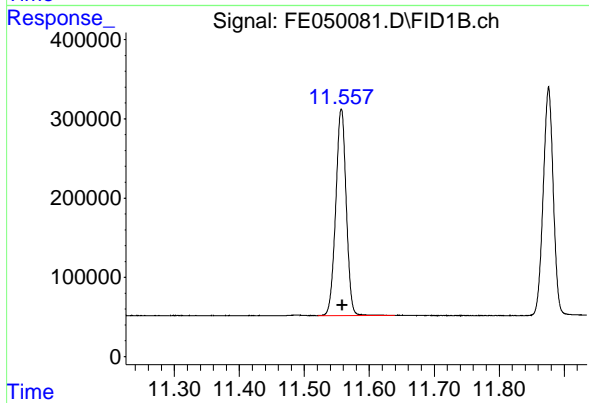
#6 n-Tetradecane (C14)

R.T.: 8.509 min
 Delta R.T.: -0.001 min
 Response: 2816519
 Conc: 20.68 ug/ml



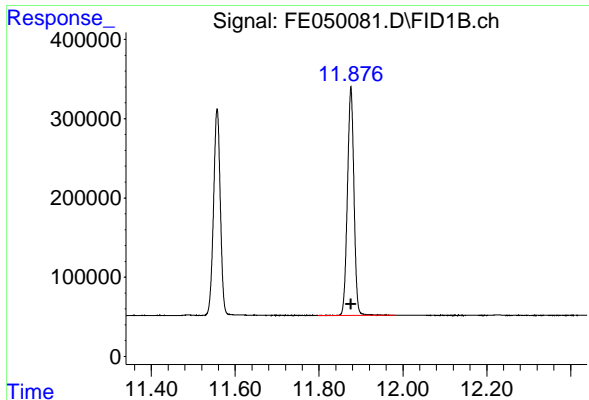
#7 n-Hexadecane (C16)

R.T.: 10.115 min
 Delta R.T.: -0.002 min
 Response: 2895017
 Conc: 20.84 ug/ml



#8 n-Octadecane (C18)

R.T.: 11.557 min
 Delta R.T.: -0.002 min
 Response: 2919276
 Conc: 20.84 ug/ml



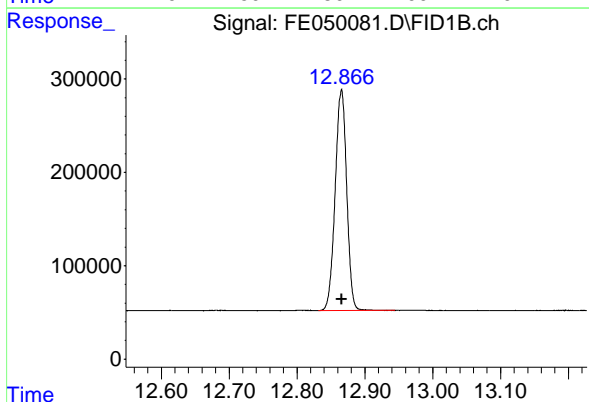
#9 ortho-Terphenyl (SURRE)

R.T.: 11.876 min
 Delta R.T.: 0.000 min
 Response: 3108101
 Conc: 20.89 ug/ml

Instrument : FID_E
 Client Sample Id : 20 PPM ALIPHATIC HC STD

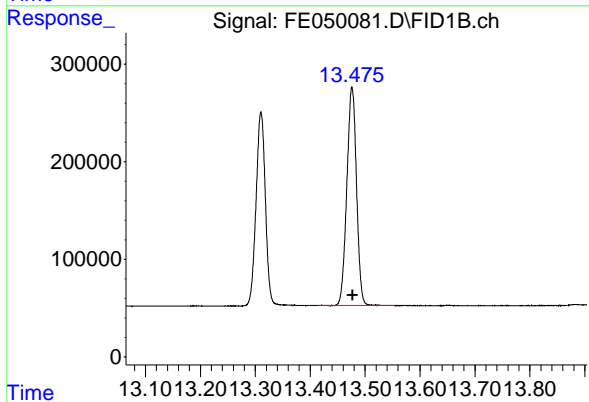
Manual Integrations
 APPROVED

Reviewed By :Yogesh Patel 09/16/2024
 Supervised By :Ankita Jodhani 09/16/2024



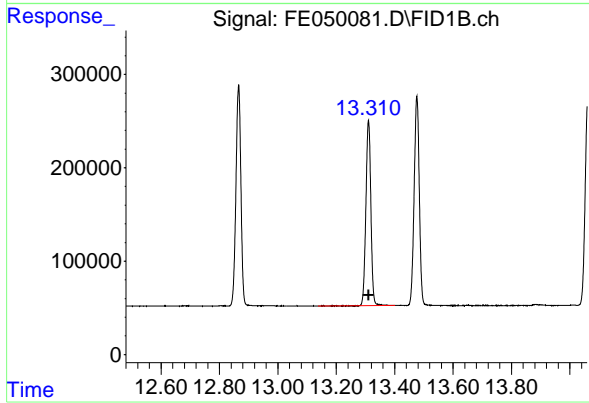
#10 n-Eicosane (C20)

R.T.: 12.865 min
 Delta R.T.: 0.000 min
 Response: 2798054
 Conc: 20.86 ug/ml



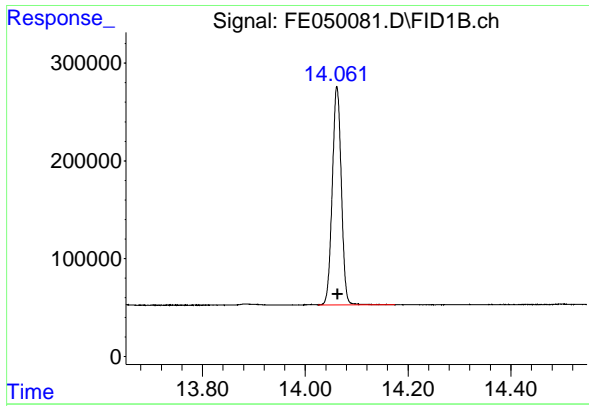
#11 n-Heneicosane (C21)

R.T.: 13.476 min
 Delta R.T.: -0.001 min
 Response: 2741698
 Conc: 20.87 ug/ml



#12 1-chlorooctadecane (SURRE)

R.T.: 13.311 min
 Delta R.T.: -0.001 min
 Response: 2335665
 Conc: 20.79 ug/ml



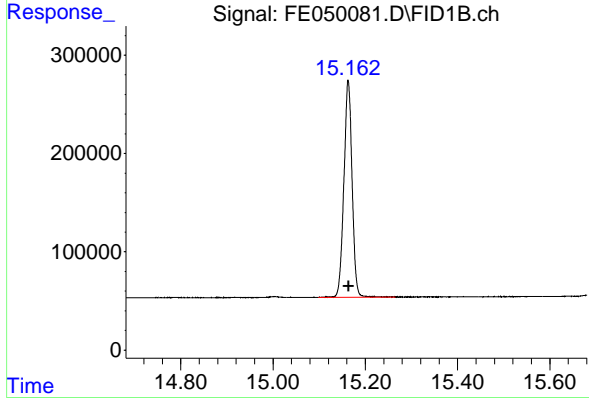
#13 n-Docosane (C22)

R.T.: 14.062 min
 Delta R.T.: -0.001 min
 Response: 2728387
 Conc: 20.95 ug/ml

Instrument : FID_E
 Client Sample Id : 20 PPM ALIPHATIC HC STD

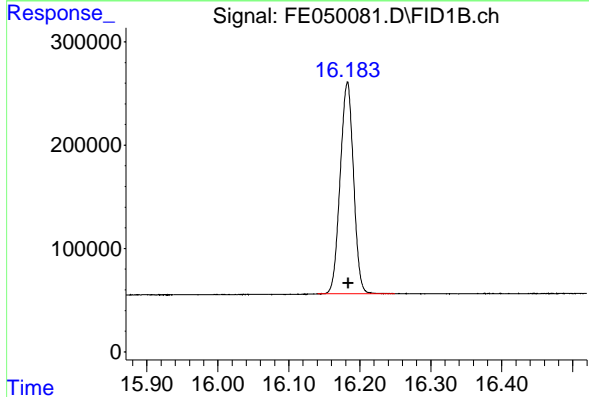
Manual Integrations
 APPROVED

Reviewed By :Yogesh Patel 09/16/2024
 Supervised By :Ankita Jodhani 09/16/2024



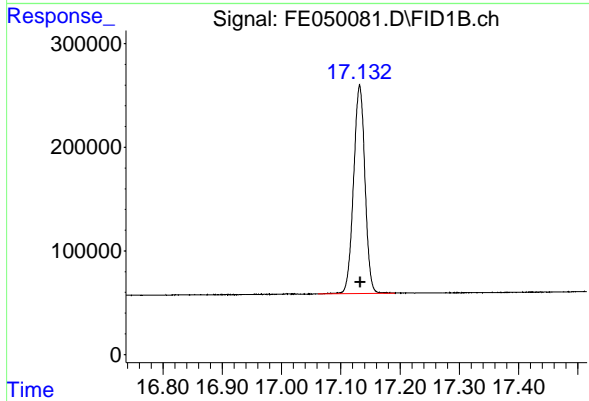
#14 n-Tetracosane (C24)

R.T.: 15.163 min
 Delta R.T.: -0.001 min
 Response: 2720685
 Conc: 20.83 ug/ml



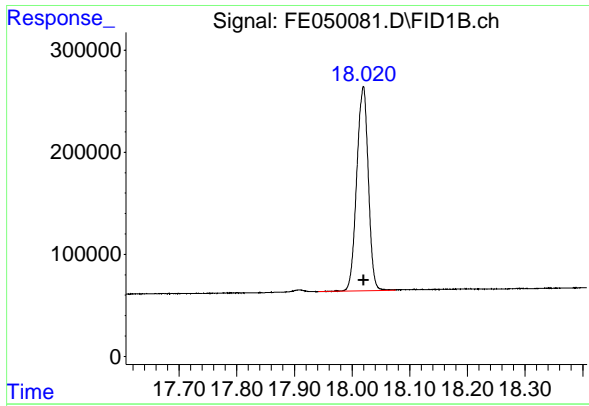
#15 n-Hexacosane (C26)

R.T.: 16.182 min
 Delta R.T.: -0.001 min
 Response: 2673247
 Conc: 20.89 ug/ml



#16 n-Octacosane (C28)

R.T.: 17.132 min
 Delta R.T.: -0.002 min
 Response: 2685953
 Conc: 20.85 ug/ml m



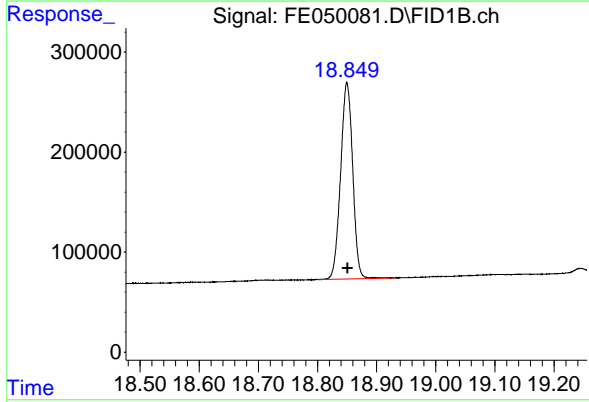
#17 n-Tricontane (C30)

R.T.: 18.019 min
 Delta R.T.: 0.000 min
 Response: 2806178
 Conc: 20.99 ug/ml

Instrument : FID_E
 Client Sample Id : 20 PPM ALIPHATIC HC STD

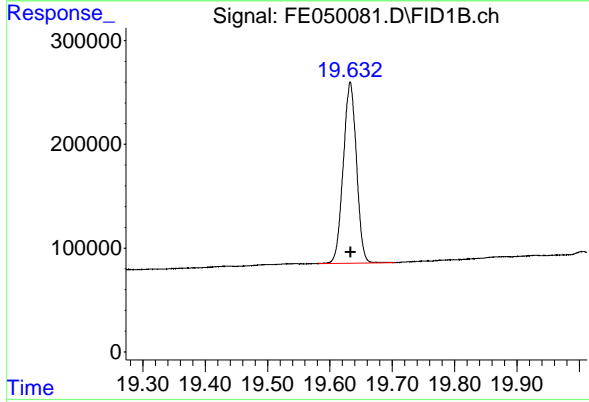
Manual Integrations
 APPROVED

Reviewed By :Yogesh Patel 09/16/2024
 Supervised By :Ankita Jodhani 09/16/2024



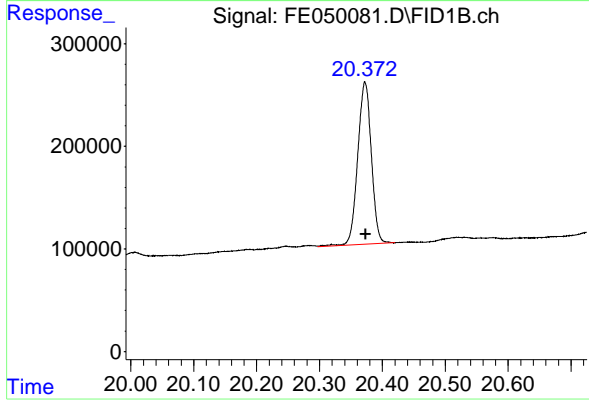
#18 n-Dotriacontane (C32)

R.T.: 18.850 min
 Delta R.T.: -0.001 min
 Response: 2788398
 Conc: 20.93 ug/ml



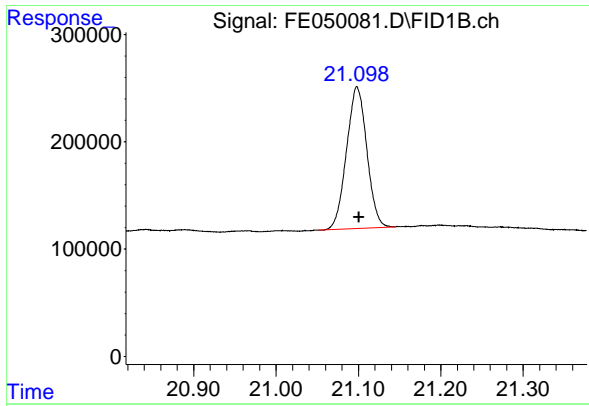
#19 n-Tetraatriacontane (C34)

R.T.: 19.633 min
 Delta R.T.: -0.001 min
 Response: 2569719
 Conc: 20.80 ug/ml



#20 n-Hexatriacontane (C36)

R.T.: 20.372 min
 Delta R.T.: -0.001 min
 Response: 2384111
 Conc: 21.49 ug/ml



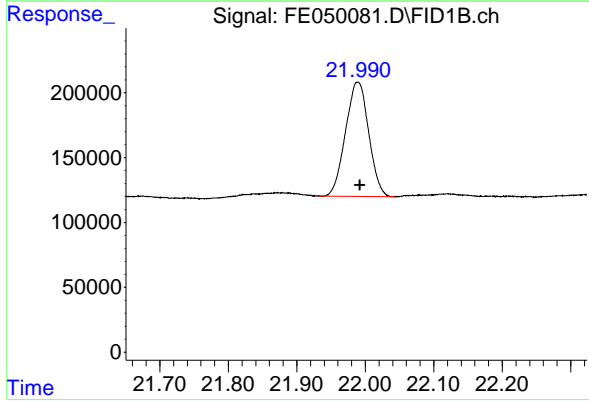
#21 n-Octatriacontane (C38)

R.T.: 21.098 min
 Delta R.T.: -0.002 min
 Response: 2258494
 Conc: 20.48 ug/ml

Instrument : FID_E
 ClientSampleId : 20 PPM ALIPHATIC HC STD

Manual Integrations
 APPROVED

Reviewed By :Yogesh Patel 09/16/2024
 Supervised By :Ankita Jodhani 09/16/2024



#22 n-Tetracontane (C40)

R.T.: 21.989 min
 Delta R.T.: -0.003 min
 Response: 2072583
 Conc: 19.05 ug/ml