

Data Path : Z:\pestpcbsrv\HPCHEM1\FID\_E\Data\FE091624AL\  
 Data File : FE050125.D  
 Signal(s) : FID1B.ch  
 Acq On : 16 Sep 2024 17:53  
 Operator : YP\AJ  
 Sample : P4002-08  
 Misc :  
 ALS Vial : 13 Sample Multiplier: 1

Instrument :  
 FID\_E  
 ClientSampleId :  
 TP-5-E2

Integration File: autoint1.e  
 Quant Time: Sep 17 01:40:09 2024  
 Quant Method : Z:\pestpcbsrv\HPCHEM1\FID\_E\methods\Aliphatic EPH 091024.M  
 Quant Title : GC Extractables  
 QLast Update : Mon Sep 09 17:11:47 2024  
 Response via : Initial Calibration  
 Integrator: ChemStation

Volume Inj. : 1 ul  
 Signal Phase : Rxi-1ms  
 Signal Info : 20M x 0.18mm x 0.18um

Compound	R.T.	Response	Conc Units
System Monitoring Compounds			
9) S ortho-Terphenyl (SURR)	11.877	4331519	29.114 ug/ml
Spiked Amount	50.000	Recovery	= 58.23%
12) S 1-chlorooctadecane (S...	13.311	3434389	30.575 ug/ml
Spiked Amount	50.000	Recovery	= 61.15%

Target Compounds

(f)=RT Delta > 1/2 Window

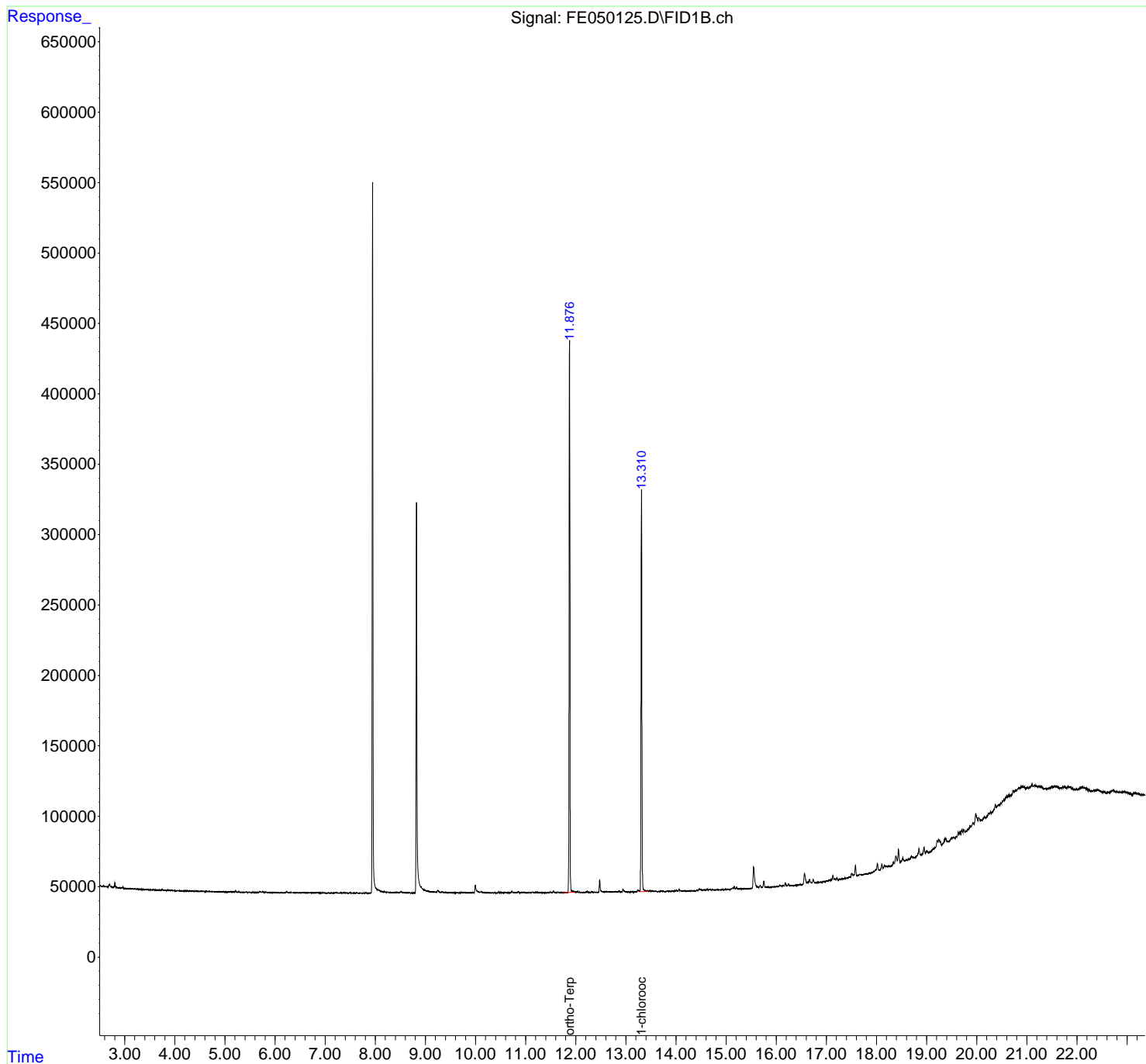
(m)=manual int.

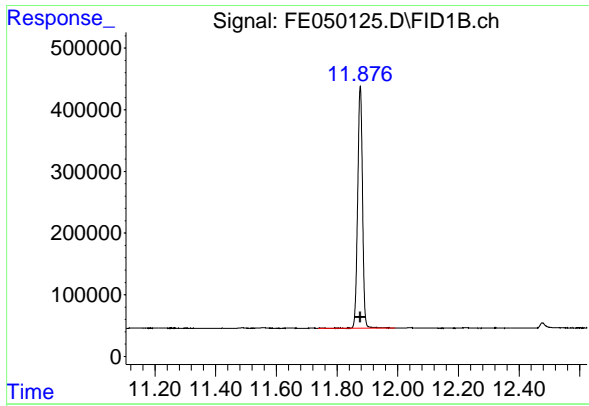
Data Path : Z:\pestpcbsrv\HPCHEM1\FID\_E\Data\FE091624AL\  
 Data File : FE050125.D  
 Signal(s) : FID1B.ch  
 Acq On : 16 Sep 2024 17:53  
 Operator : YP\AJ  
 Sample : P4002-08  
 Misc :  
 ALS Vial : 13 Sample Multiplier: 1

Instrument :  
 FID\_E  
 ClientSampleId :  
 TP-5-E2

Integration File: autoint1.e  
 Quant Time: Sep 17 01:40:09 2024  
 Quant Method : Z:\pestpcbsrv\HPCHEM1\FID\_E\methods\Aliphatic EPH 091024.M  
 Quant Title : GC Extractables  
 QLast Update : Mon Sep 09 17:11:47 2024  
 Response via : Initial Calibration  
 Integrator: ChemStation

Volume Inj. : 1 ul  
 Signal Phase : Rxi-1ms  
 Signal Info : 20M x 0.18mm x 0.18um

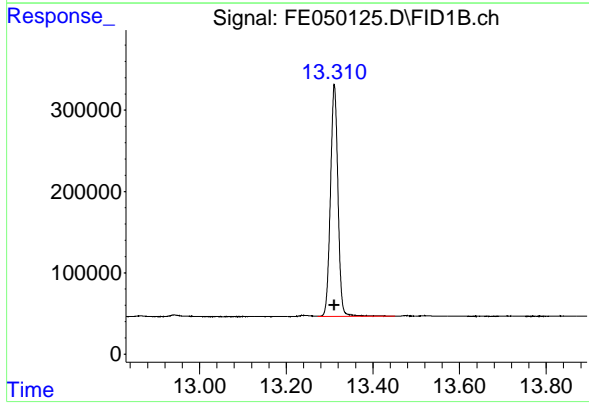




#9 ortho-Terphenyl (SURR)

R.T.: 11.877 min  
Delta R.T.: 0.000 min  
Response: 4331519  
Conc: 29.11 ug/ml

Instrument :  
FID\_E  
ClientSampleId :  
TP-5-E2



#12 1-chlorooctadecane (SURR)

R.T.: 13.311 min  
Delta R.T.: 0.000 min  
Response: 3434389  
Conc: 30.57 ug/ml