

Data Path : Z:\pestpcbsrv\HPCHEM1\FID\_E\Data\FE091724AL\  
 Data File : FE050139.D  
 Signal(s) : FID1B.ch  
 Acq On : 17 Sep 2024 09:10  
 Operator : YP\AJ  
 Sample : P3989-05DL 2X  
 Misc :  
 ALS Vial : 9 Sample Multiplier: 1

**Instrument :**  
 FID\_E  
**ClientSampleId :**  
 TP-3DL

**Manual Integrations**  
**APPROVED**  
 Reviewed By :Yogesh Patel 09/18/2024  
 Supervised By :Ankita Jodhani 09/18/2024

Integration File: autoint1.e  
 Quant Time: Sep 18 01:26:19 2024  
 Quant Method : Z:\pestpcbsrv\HPCHEM1\FID\_E\methods\Aliphatic EPH 091024.M  
 Quant Title : GC Extractables  
 QLast Update : Mon Sep 09 17:11:47 2024  
 Response via : Initial Calibration  
 Integrator: ChemStation

Volume Inj. : 1 ul  
 Signal Phase : Rxi-1ms  
 Signal Info : 20M x 0.18mm x 0.18um

Compound	R.T.	Response	Conc Units
System Monitoring Compounds			
9) S ortho-Terphenyl (SURR)	11.875	1793165	12.052 ug/mlm
Spiked Amount	50.000	Recovery =	24.10%
12) S 1-chlorooctadecane (S...	13.310	1405152	12.509 ug/ml
Spiked Amount	50.000	Recovery =	25.02%

Target Compounds

(f)=RT Delta > 1/2 Window

(m)=manual int.

Data Path : Z:\pestpcbsrv\HPCHEM1\FID\_E\Data\FE091724AL\  
Data File : FE050139.D  
Signal(s) : FID1B.ch  
Acq On : 17 Sep 2024 09:10  
Operator : YP\AJ  
Sample : P3989-05DL 2X  
Misc :  
ALS Vial : 9 Sample Multiplier: 1

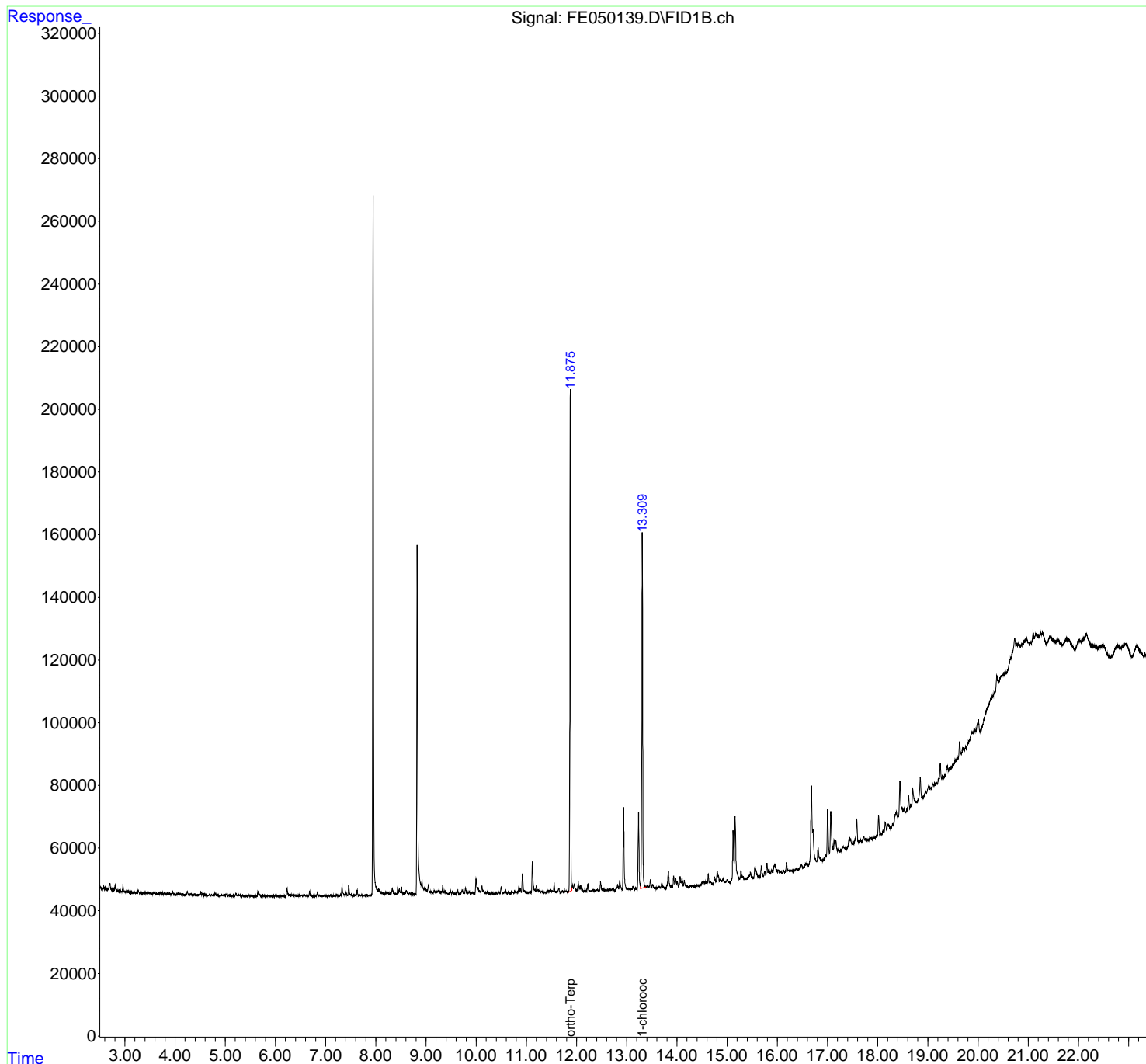
Instrument :  
FID\_E  
ClientSampleId :  
TP-3DL

Manual Integrations  
APPROVED

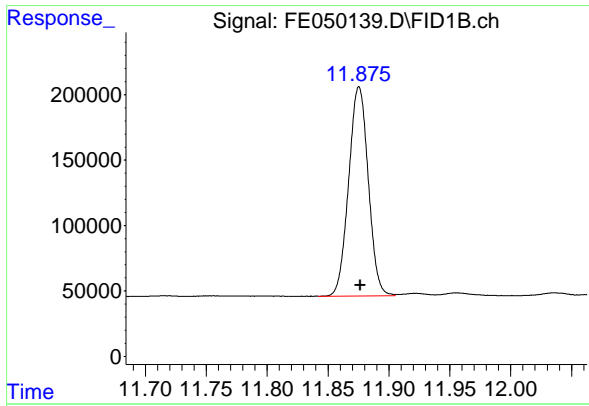
Reviewed By :Yogesh Patel 09/18/2024  
Supervised By :Ankita Jodhani 09/18/2024

Integration File: autoint1.e  
Quant Time: Sep 18 01:26:19 2024  
Quant Method : Z:\pestpcbsrv\HPCHEM1\FID\_E\methods\Aliphatic EPH 091024.  
Quant Title : GC Extractables  
QLast Update : Mon Sep 09 17:11:47 2024  
Response via : Initial Calibration  
Integrator: ChemStation

Volume Inj. : 1 ul  
Signal Phase : Rxi-1ms  
Signal Info : 20M x 0.18mm x 0.18um



ortho-Terp  
1-chlorooc



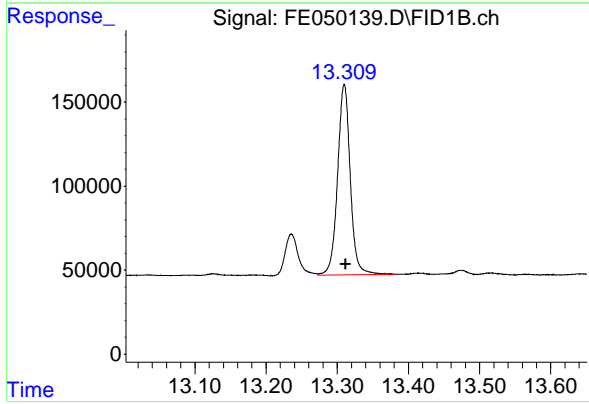
#9 ortho-Terphenyl (SURRE)

R.T.: 11.875 min  
Delta R.T.: -0.001 min  
Response: 1793165  
Conc: 12.05 ug/ml

Instrument :  
FID\_E  
ClientSampleId :  
TP-3DL

Manual Integrations  
APPROVED

Reviewed By :Yogesh Patel 09/18/2024  
Supervised By :Ankita Jodhani 09/18/2024



#12 1-chlorooctadecane (SURRE)

R.T.: 13.310 min  
Delta R.T.: -0.002 min  
Response: 1405152  
Conc: 12.51 ug/ml