

Data Path : Z:\pestpcbsrv\HPCHEM1\FID_E\Data\FE091823AL\
 Data File : FE044329.D
 Signal(s) : FID1B.ch
 Acq On : 18 Sep 2023 10:21
 Operator : YP\AJ
 Sample : 04435-04DL 5X
 Misc :
 ALS Vial : 7 Sample Multiplier: 1

Instrument :
 FID_E
ClientSampleId :
 WC-1DL

Manual Integrations
APPROVED
 Reviewed By :Yogesh Patel 09/18/2023
 Supervised By :Ankita Jodhani 09/18/2023

Integration File: autoint1.e
 Quant Time: Sep 18 10:56:39 2023
 Quant Method : Z:\pestpcbsrv\HPCHEM1\FID_E\methods\Aliphatic EPH 083023.M
 Quant Title : GC Extractables
 QLast Update : Thu Aug 31 03:37:37 2023
 Response via : Initial Calibration
 Integrator: ChemStation

Volume Inj. : 1 ul
 Signal Phase : Rxi-1ms
 Signal Info : 20M x 0.18mm x 0.18um

Compound	R.T.	Response	Conc Units

System Monitoring Compounds			
9) S ortho-Terphenyl (SURR)	11.930	1078230	5.691 ug/mlm
Spiked Amount	50.000	Recovery =	11.38%
12) S 1-chlorooctadecane (S...	13.371	883777	6.397 ug/ml
Spiked Amount	50.000	Recovery =	12.79%

Target Compounds

(f)=RT Delta > 1/2 Window (m)=manual int.

Data Path : Z:\pestpcbsrv\HPCHEM1\FID_E\Data\FE091823AL\
 Data File : FE044329.D
 Signal(s) : FID1B.ch
 Acq On : 18 Sep 2023 10:21
 Operator : YP\AJ
 Sample : 04435-04DL 5X
 Misc :
 ALS Vial : 7 Sample Multiplier: 1

Instrument :

FID_E

ClientSampleId :

WC-1DL

Manual Integrations

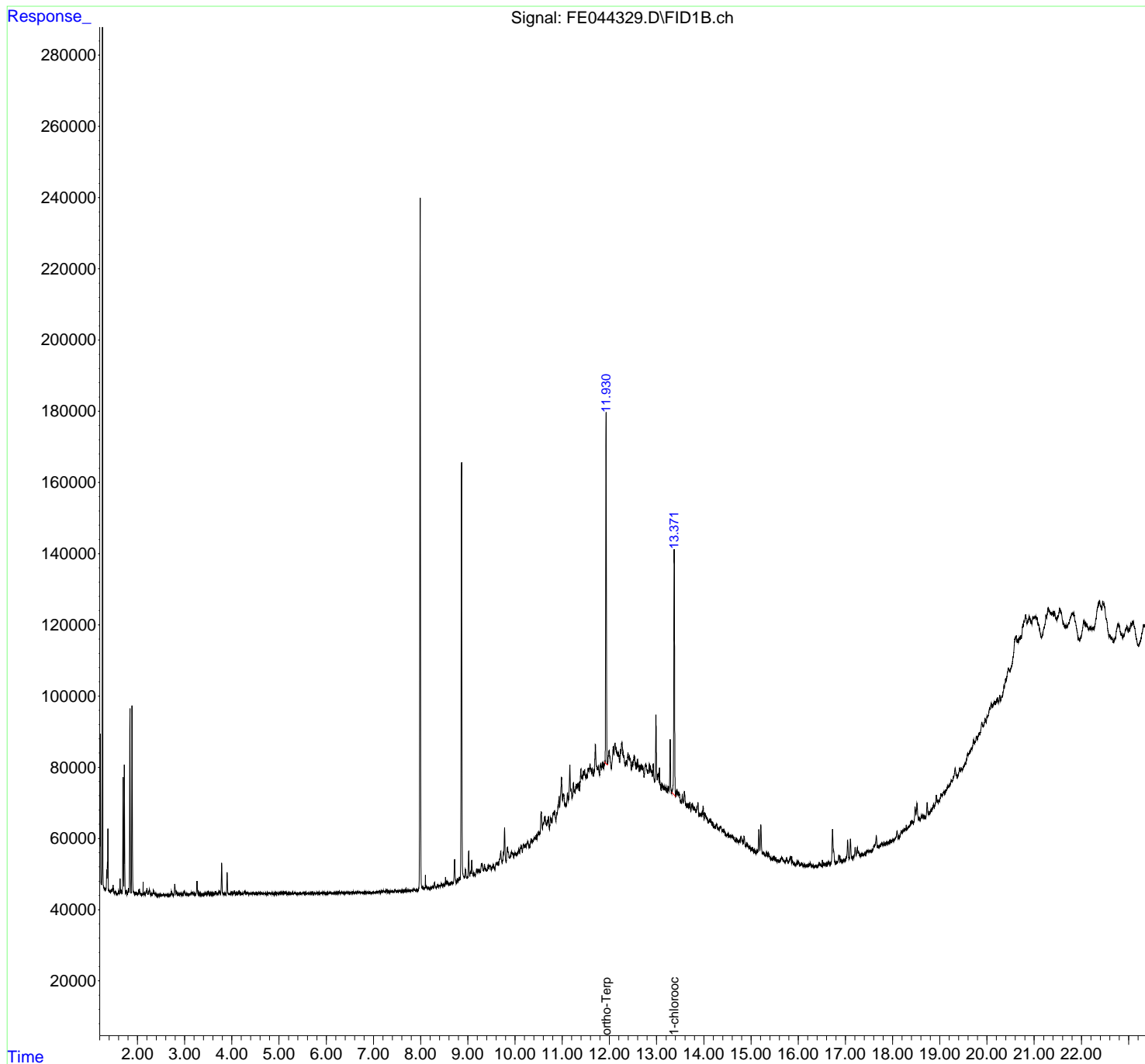
APPROVED

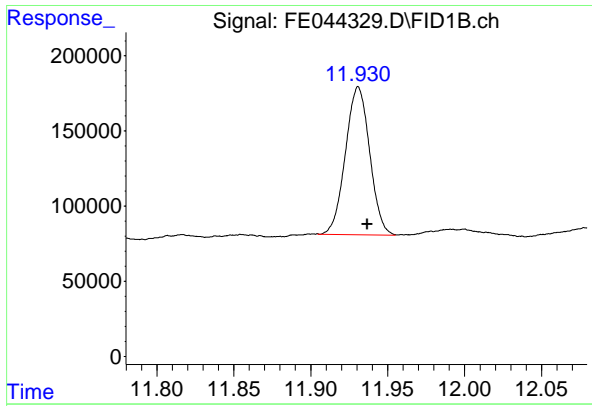
Reviewed By :Yogesh Patel 09/18/2023

Supervised By :Ankita Jodhani 09/18/2023

Integration File: autoint1.e
 Quant Time: Sep 18 10:56:39 2023
 Quant Method : Z:\pestpcbsrv\HPCHEM1\FID_E\methods\Aliphatic EPH 083023.
 Quant Title : GC Extractables
 QLast Update : Thu Aug 31 03:37:37 2023
 Response via : Initial Calibration
 Integrator: ChemStation

Volume Inj. : 1 ul
 Signal Phase : Rxi-1ms
 Signal Info : 20M x 0.18mm x 0.18um





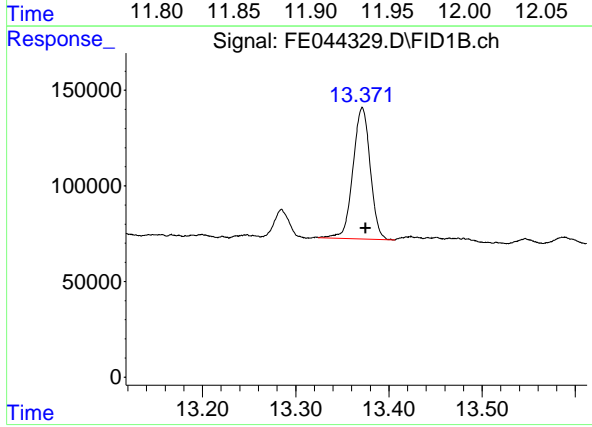
#9 ortho-Terphenyl (SURR)

R.T.: 11.930 min
 Delta R.T.: -0.006 min
 Response: 1078230
 Conc: 5.69 ug/ml

Instrument : FID_E
 ClientSampleId : WC-1DL

Manual Integrations
 APPROVED

Reviewed By :Yogesh Patel 09/18/2023
 Supervised By :Ankita Jodhani 09/18/2023



#12 1-chlorooctadecane (SURR)

R.T.: 13.371 min
 Delta R.T.: -0.004 min
 Response: 883777
 Conc: 6.40 ug/ml