

Data Path : Z:\pestpcbsrv\HPCHEM1\FID\_E\Data\FE091823AL\  
 Data File : FE044333.D  
 Signal(s) : FID1B.ch  
 Acq On : 18 Sep 2023 12:23  
 Operator : YP\AJ  
 Sample : 04445-02DL 5X  
 Misc :  
 ALS Vial : 11 Sample Multiplier: 1

Instrument :  
 FID\_E  
 ClientSampleId :  
 TR-05-09142023DL

Integration File: autoint1.e  
 Quant Time: Sep 18 13:38:56 2023  
 Quant Method : Z:\pestpcbsrv\HPCHEM1\FID\_E\methods\Aliphatic EPH 083023.M  
 Quant Title : GC Extractables  
 QLast Update : Thu Aug 31 03:37:37 2023  
 Response via : Initial Calibration  
 Integrator: ChemStation

Volume Inj. : 1 ul  
 Signal Phase : Rxi-1ms  
 Signal Info : 20M x 0.18mm x 0.18um

Compound	R.T.	Response	Conc Units
System Monitoring Compounds			
9) S ortho-Terphenyl (SURR)	11.930	1360822	7.183 ug/ml
Spiked Amount	50.000	Recovery	= 14.37%
12) S 1-chlorooctadecane (S...	13.368	1552652	11.239 ug/ml
Spiked Amount	50.000	Recovery	= 22.48%

Target Compounds

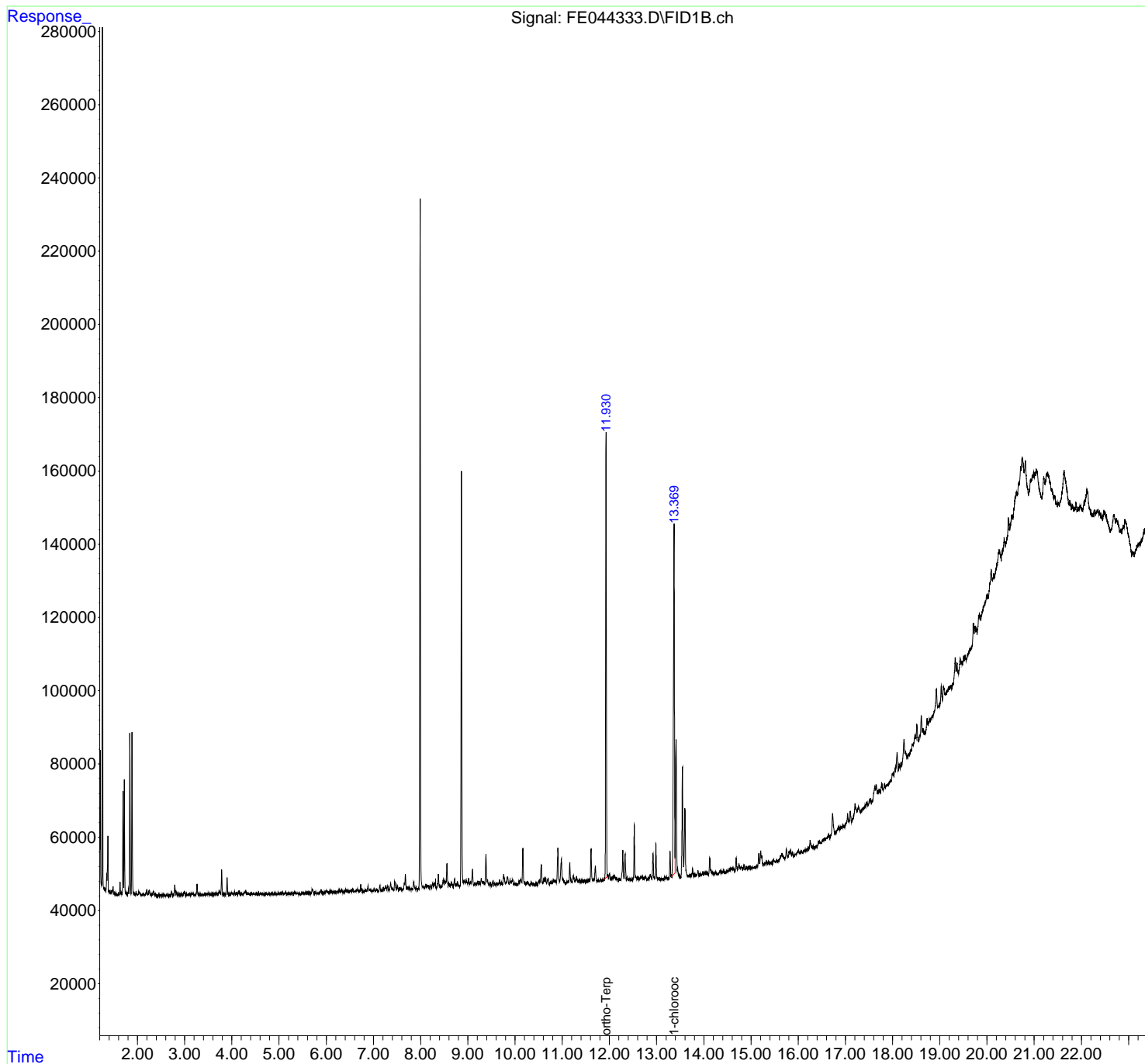
(f)=RT Delta > 1/2 Window (m)=manual int.

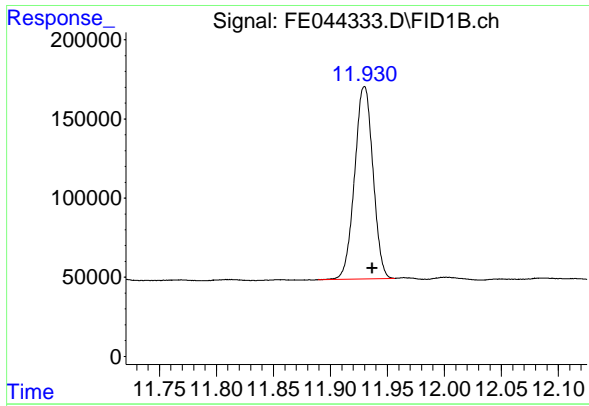
Data Path : Z:\pestpcbsrv\HPCHEM1\FID\_E\Data\FE091823AL\  
 Data File : FE044333.D  
 Signal(s) : FID1B.ch  
 Acq On : 18 Sep 2023 12:23  
 Operator : YP\AJ  
 Sample : 04445-02DL 5X  
 Misc :  
 ALS Vial : 11 Sample Multiplier: 1

Instrument :  
 FID\_E  
 ClientSampleId :  
 TR-05-09142023DL

Integration File: autoint1.e  
 Quant Time: Sep 18 13:38:56 2023  
 Quant Method : Z:\pestpcbsrv\HPCHEM1\FID\_E\methods\Aliphatic EPH 083023.M  
 Quant Title : GC Extractables  
 QLast Update : Thu Aug 31 03:37:37 2023  
 Response via : Initial Calibration  
 Integrator: ChemStation

Volume Inj. : 1 ul  
 Signal Phase : Rxi-1ms  
 Signal Info : 20M x 0.18mm x 0.18um

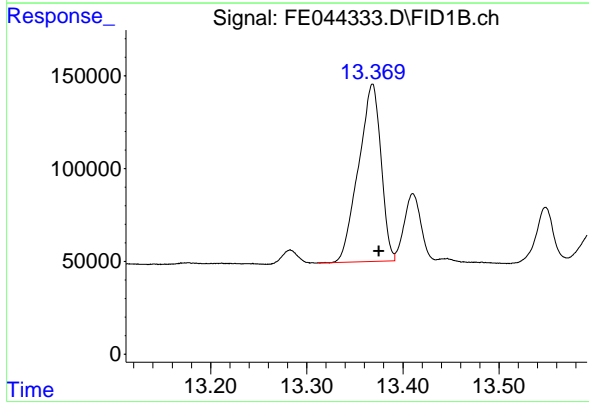




#9 ortho-Terphenyl (SURR)

R.T.: 11.930 min  
Delta R.T.: -0.007 min  
Response: 1360822  
Conc: 7.18 ug/ml

Instrument :  
FID\_E  
ClientSampleId :  
TR-05-09142023DL



#12 1-chlorooctadecane (SURR)

R.T.: 13.368 min  
Delta R.T.: -0.007 min  
Response: 1552652  
Conc: 11.24 ug/ml