

Data Path : Z:\pestpcbsrv\HPCHEM1\FID\_E\Data\FE092022AL\  
 Data File : FE037673.D  
 Signal(s) : FID1B.ch  
 Acq On : 20 Sep 2022 09:21  
 Operator : YP\AJ  
 Sample : MECL2  
 Misc :  
 ALS Vial : 1 Sample Multiplier: 1

Instrument :  
 FID\_E  
 ClientSampleId :  
 MECL2

Integration File: sample.E  
 Quant Time: Sep 20 11:36:30 2022  
 Quant Method : Z:\pestpcbsrv\HPCHEM1\FID\_D\methods\Aliphatic EPH 082922.M  
 Quant Title : GC Extractables  
 QLast Update : Tue Aug 30 06:54:11 2022  
 Response via : Initial Calibration  
 Integrator: ChemStation

Volume Inj. : 1 ul  
 Signal Phase : Rxi-1ms  
 Signal Info : 20M x 0.18mm x 0.18um

Compound	R.T.	Response	Conc Units
-----			
System Monitoring Compounds			
Target Compounds			
-----			

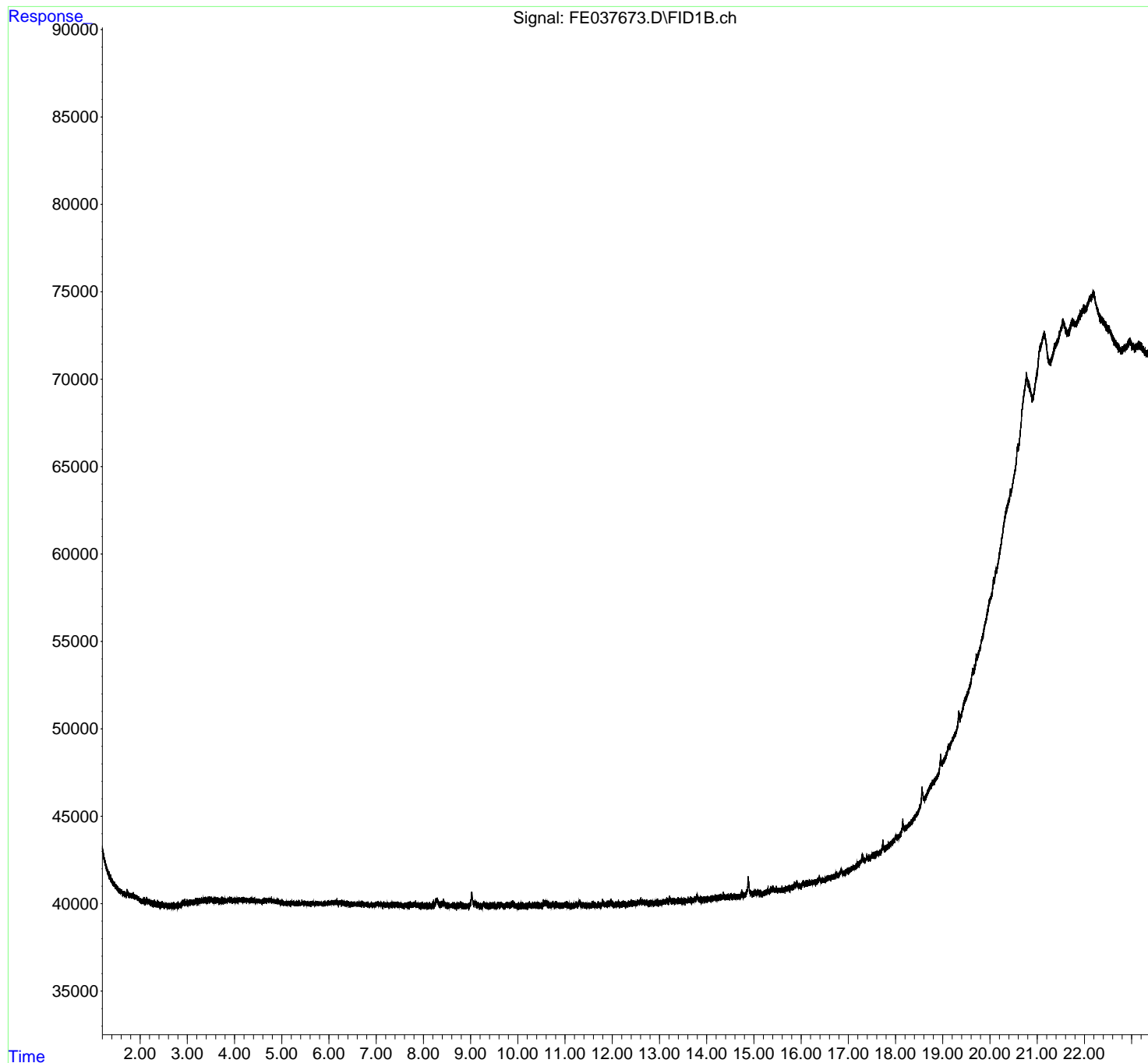
(f)=RT Delta > 1/2 Window (m)=manual int.

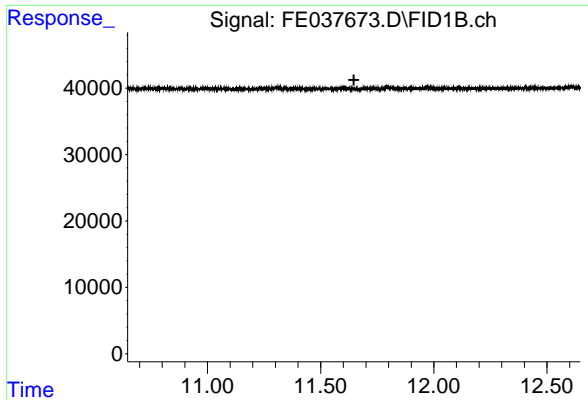
Data Path : Z:\pestpcbsrv\HPCHEM1\FID\_E\Data\FE092022AL\  
Data File : FE037673.D  
Signal(s) : FID1B.ch  
Acq On : 20 Sep 2022 09:21  
Operator : YP\AJ  
Sample : MECL2  
Misc :  
ALS Vial : 1 Sample Multiplier: 1

Instrument :  
FID\_E  
ClientSampleId :  
MECL2

Integration File: sample.E  
Quant Time: Sep 20 11:36:30 2022  
Quant Method : Z:\pestpcbsrv\HPCHEM1\FID\_D\methods\Aliphatic EPH 082922.M  
Quant Title : GC Extractables  
QLast Update : Tue Aug 30 06:54:11 2022  
Response via : Initial Calibration  
Integrator: ChemStation

Volume Inj. : 1 ul  
Signal Phase : Rxi-1ms  
Signal Info : 20M x 0.18mm x 0.18um

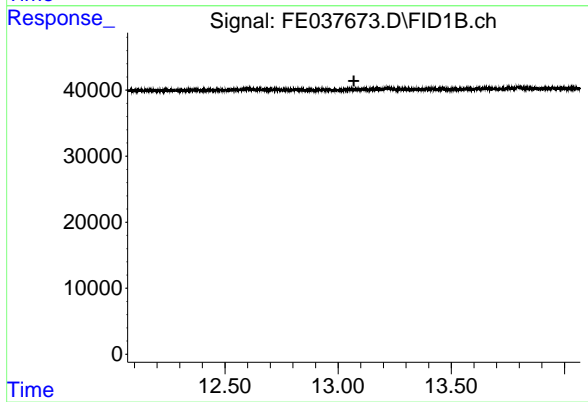




#9 ortho-Terphenyl (SURR)

R.T.: 0.000 min  
Exp R.T. : 11.647 min  
Response: 0  
Conc: N.D.

Instrument :  
FID\_E  
ClientSampleId :  
MECL2



#12 1-chlorooctadecane (SURR)

R.T.: 0.000 min  
Exp R.T. : 13.070 min  
Response: 0  
Conc: N.D.