

Data Path : Z:\pestpcbsrv\HPCHEM1\FID\_E\Data\FE092222AL\  
 Data File : FE037731.D  
 Signal(s) : FID1B.ch  
 Acq On : 22 Sep 2022 16:18  
 Operator : YP\AJ  
 Sample : N4725-01  
 Misc :  
 ALS Vial : 10 Sample Multiplier: 1

Instrument :  
 FID\_E  
 ClientSampleId :  
 S-1

Integration File: autoint1.e  
 Quant Time: Sep 23 03:43:39 2022  
 Quant Method : Z:\pestpcbsrv\HPCHEM1\FID\_D\methods\Aliphatic EPH 082922.M  
 Quant Title : GC Extractables  
 QLast Update : Tue Aug 30 06:54:11 2022  
 Response via : Initial Calibration  
 Integrator: ChemStation

Volume Inj. : 1 ul  
 Signal Phase : Rxi-1ms  
 Signal Info : 20M x 0.18mm x 0.18um

Compound	R.T.	Response	Conc Units
-----			
System Monitoring Compounds			
9) S ortho-Terphenyl (SURR)	11.629	6580151	38.938 ug/ml
Spiked Amount	50.000	Recovery	= 77.88%
12) S 1-chlorooctadecane (S...	13.053	5352086	41.586 ug/ml
Spiked Amount	50.000	Recovery	= 83.17%

Target Compounds

-----

(f)=RT Delta > 1/2 Window

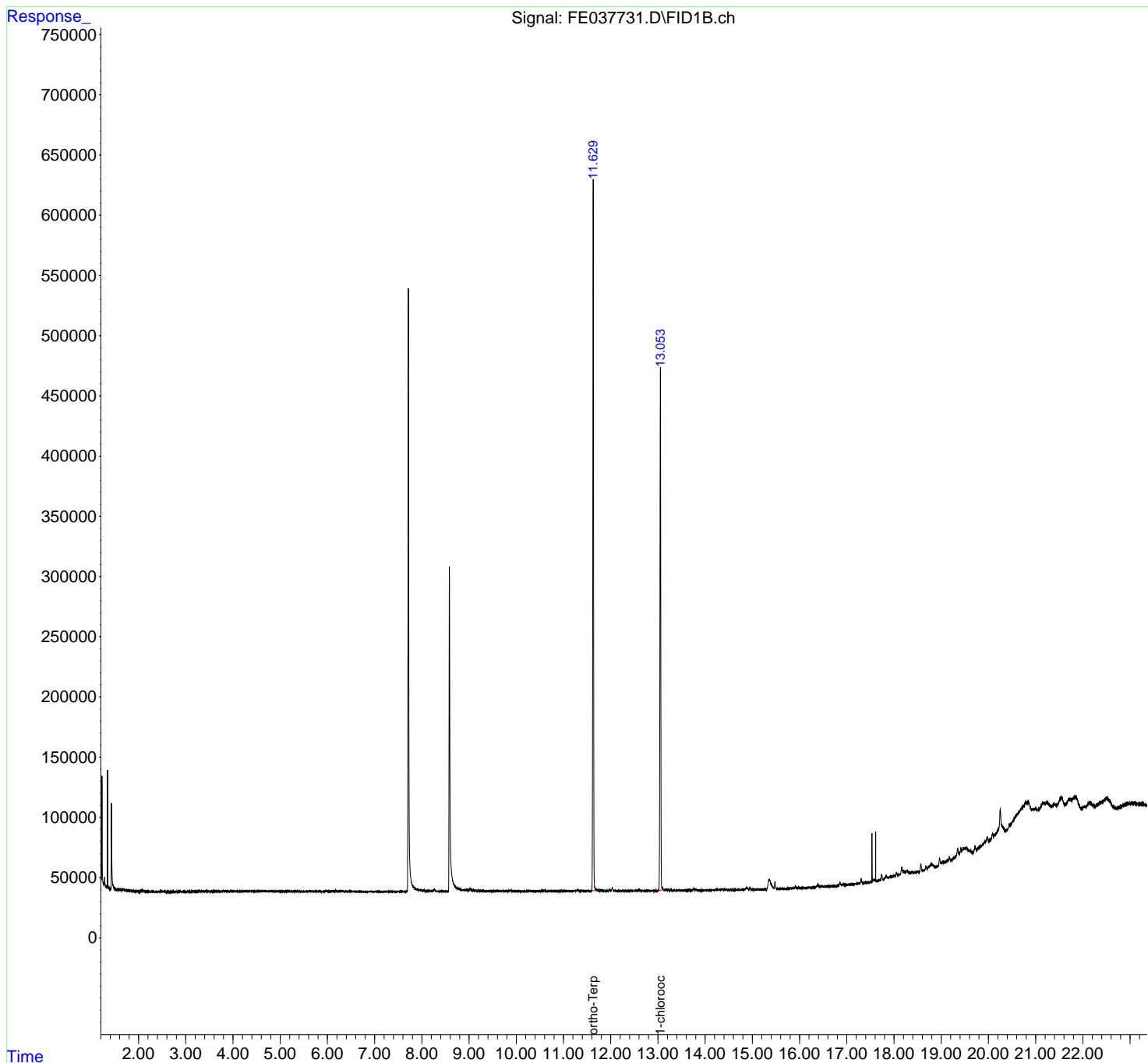
(m)=manual int.

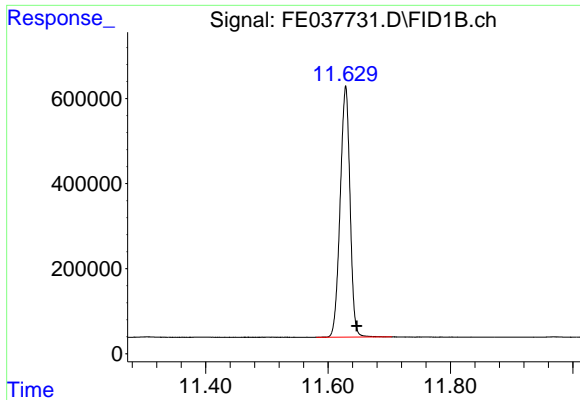
Data Path : Z:\pestpcbsrv\HPCHEM1\FID\_E\Data\FE092222AL\  
Data File : FE037731.D  
Signal(s) : FID1B.ch  
Acq On : 22 Sep 2022 16:18  
Operator : YP\AJ  
Sample : N4725-01  
Misc :  
ALS Vial : 10 Sample Multiplier: 1

Instrument :  
FID\_E  
ClientSampleId :  
S-1

Integration File: autoint1.e  
Quant Time: Sep 23 03:43:39 2022  
Quant Method : Z:\pestpcbsrv\HPCHEM1\FID\_D\methods\Aliphatic EPH 082922.M  
Quant Title : GC Extractables  
QLast Update : Tue Aug 30 06:54:11 2022  
Response via : Initial Calibration  
Integrator: ChemStation

Volume Inj. : 1 ul  
Signal Phase : Rxi-1ms  
Signal Info : 20M x 0.18mm x 0.18um

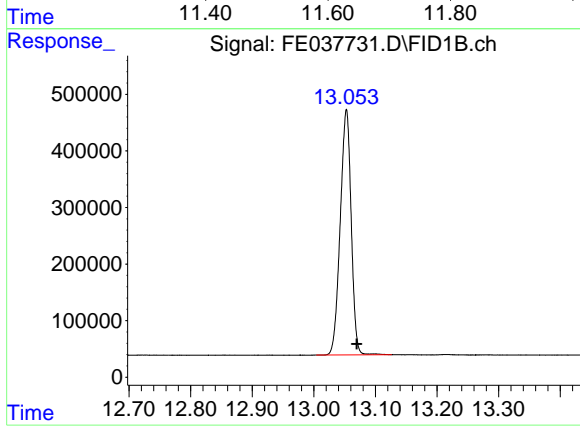




#9 ortho-Terphenyl (SURR)

R.T.: 11.629 min  
Delta R.T.: -0.018 min  
Response: 6580151  
Conc: 38.94 ug/ml

Instrument :  
FID\_E  
ClientSampleId :  
S-1



#12 1-chlorooctadecane (SURR)

R.T.: 13.053 min  
Delta R.T.: -0.017 min  
Response: 5352086  
Conc: 41.59 ug/ml