

Data Path : Z:\pestpcbsrv\HPCHEM1\FID_E\Data\FE092324AL\
 Data File : FE050300.D
 Signal(s) : FID1B.ch
 Acq On : 23 Sep 2024 19:45
 Operator : YP\AJ
 Sample : P4104-29DL3 50X
 Misc :
 ALS Vial : 22 Sample Multiplier: 1

Instrument :
 FID_E
 ClientSampleId :

Integration File: autoint1.e
 Quant Time: Sep 24 01:28:35 2024
 Quant Method : Z:\pestpcbsrv\HPCHEM1\FID_E\methods\Aliphatic EPH 091024.M
 Quant Title : GC Extractables
 QLast Update : Mon Sep 09 17:11:47 2024
 Response via : Initial Calibration
 Integrator: ChemStation

Volume Inj. : 1 ul
 Signal Phase : Rxi-1ms
 Signal Info : 20M x 0.18mm x 0.18um

Compound	R.T.	Response	Conc Units

System Monitoring Compounds			
12) S 1-chlorooctadecane (S...	13.302	83249	0.741 ug/ml
Spiked Amount	50.000	Recovery =	1.48%
Target Compounds			
3) T A~Naphthalene (C11.7)	6.172f	139725	0.998 ug/ml
4) T n-Dodecane (C12)	6.707	45383	0.328 ug/ml
5) T A~2-methylnaphthalene...	7.331	84826	0.645 ug/ml
6) T n-Tetradecane (C14)	8.549	76195	0.560 ug/ml
7) T n-Hexadecane (C16)	10.109	28315	0.204 ug/ml
17) T n-Tricontane (C30)	18.008	40329	0.302 ug/ml

(f)=RT Delta > 1/2 Window

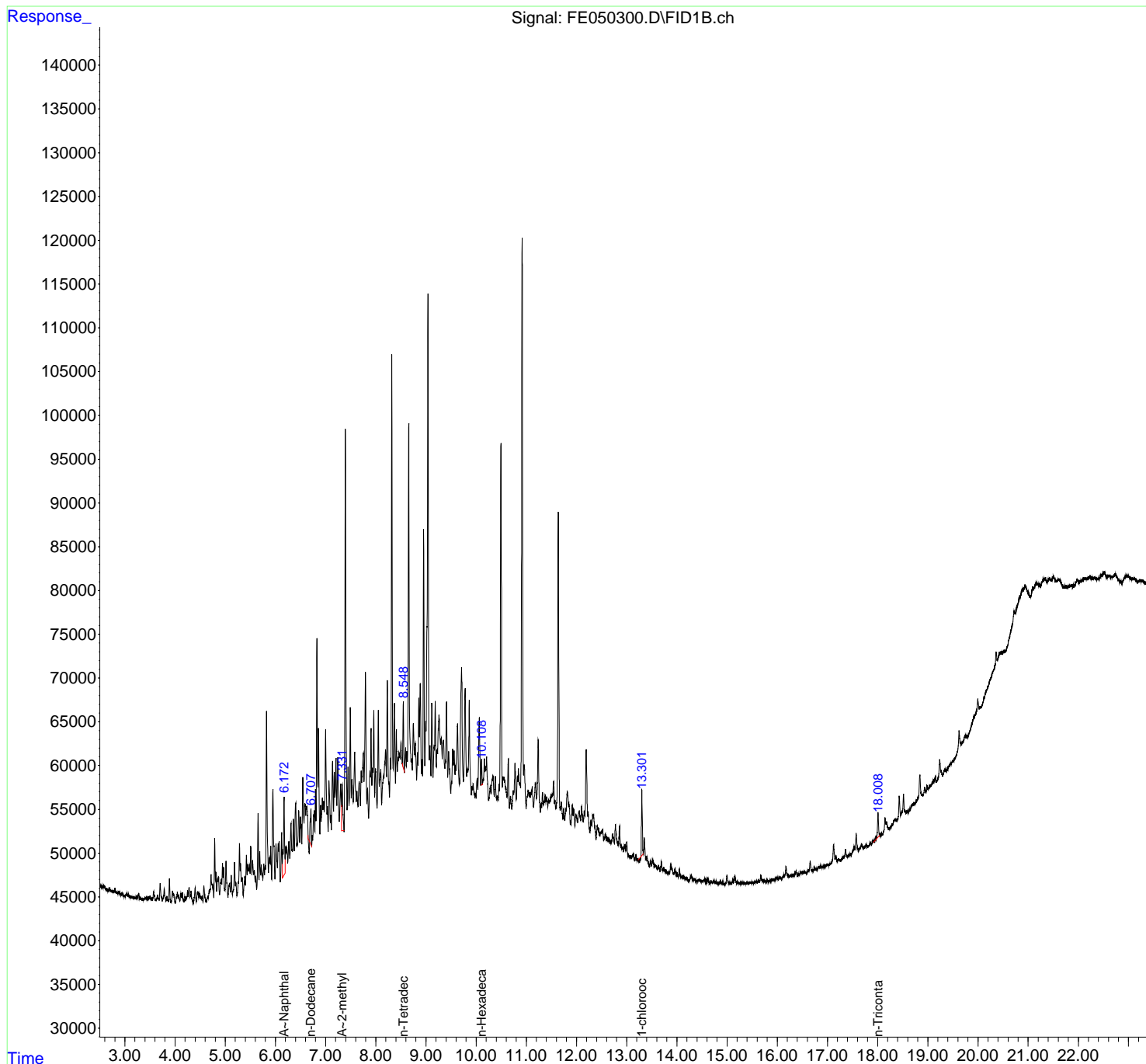
(m)=manual int.

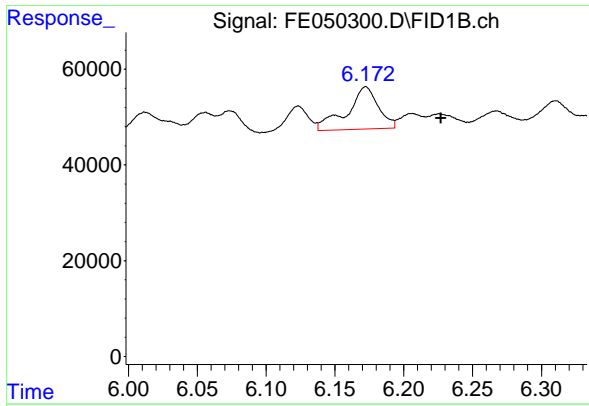
Data Path : Z:\pestpcbsrv\HPCHEM1\FID_E\Data\FE092324AL\
 Data File : FE050300.D
 Signal(s) : FID1B.ch
 Acq On : 23 Sep 2024 19:45
 Operator : YP\AJ
 Sample : P4104-29DL3 50X
 Misc :
 ALS Vial : 22 Sample Multiplier: 1

Instrument :
 FID_E
 ClientSampleId :

Integration File: autoint1.e
 Quant Time: Sep 24 01:28:35 2024
 Quant Method : Z:\pestpcbsrv\HPCHEM1\FID_E\methods\Aliphatic EPH 091024.M
 Quant Title : GC Extractables
 QLast Update : Mon Sep 09 17:11:47 2024
 Response via : Initial Calibration
 Integrator: ChemStation

Volume Inj. : 1 ul
 Signal Phase : Rxi-1ms
 Signal Info : 20M x 0.18mm x 0.18um

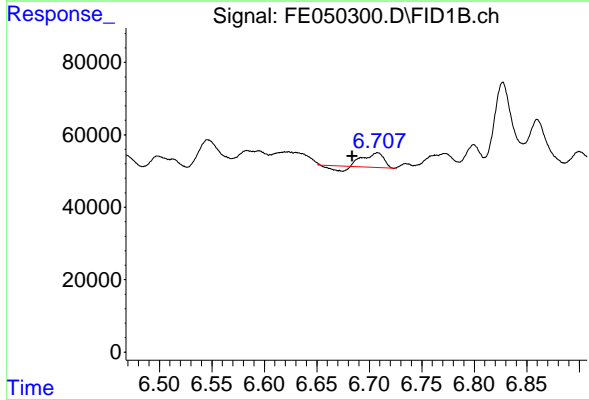




#3 A~Naphthalene (C11.7)

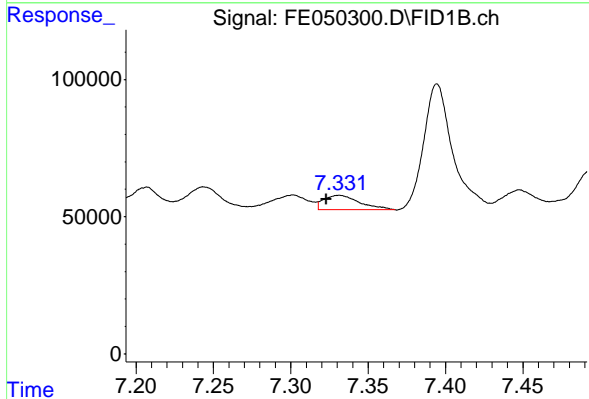
R.T.: 6.172 min
 Delta R.T.: -0.055 min
 Response: 139725
 Conc: 1.00 ug/ml

Instrument :
 FID_E
 ClientSampleId :



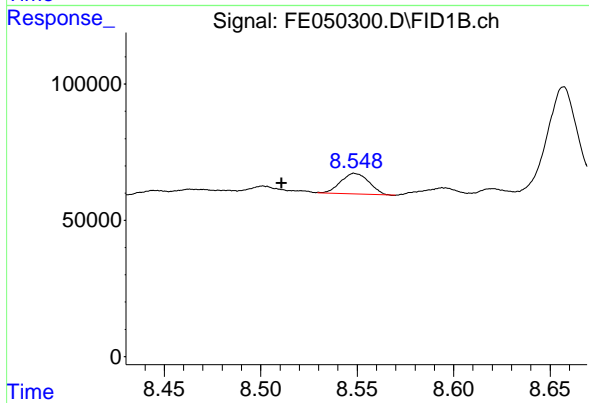
#4 n-Dodecane (C12)

R.T.: 6.707 min
 Delta R.T.: 0.024 min
 Response: 45383
 Conc: 0.33 ug/ml



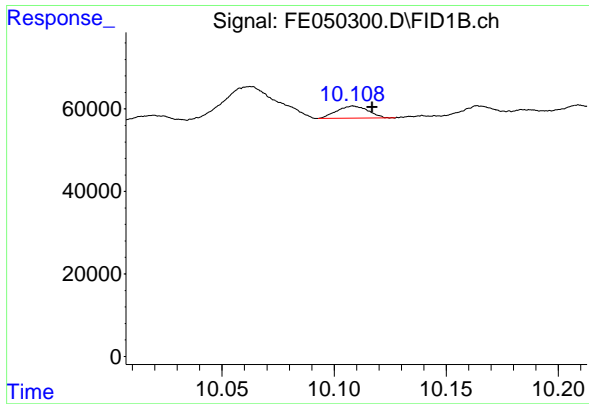
#5 A~2-methylnaphthalene (C12.89)

R.T.: 7.331 min
 Delta R.T.: 0.008 min
 Response: 84826
 Conc: 0.65 ug/ml



#6 n-Tetradecane (C14)

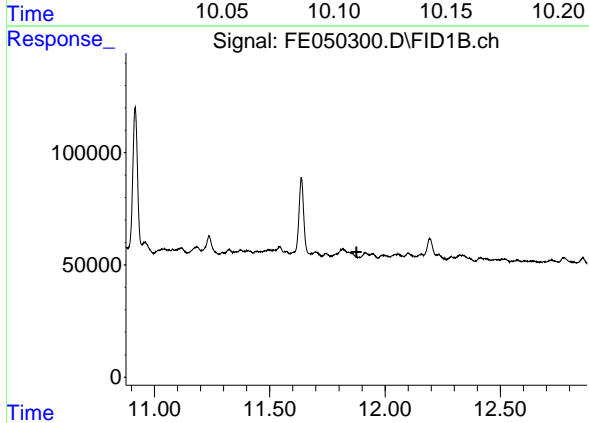
R.T.: 8.549 min
 Delta R.T.: 0.038 min
 Response: 76195
 Conc: 0.56 ug/ml



#7 n-Hexadecane (C16)

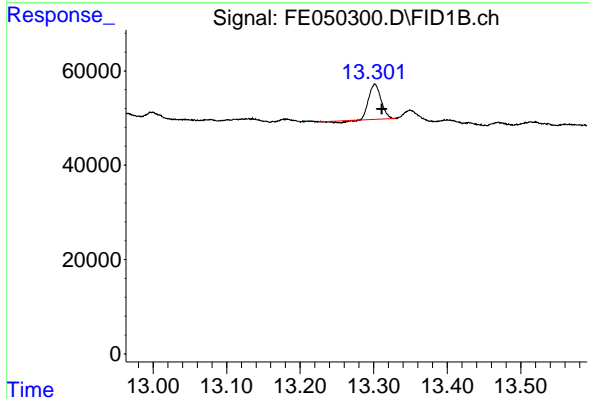
R.T.: 10.109 min
 Delta R.T.: -0.008 min
 Response: 28315
 Conc: 0.20 ug/ml

Instrument :
 FID_E
 ClientSampleId :



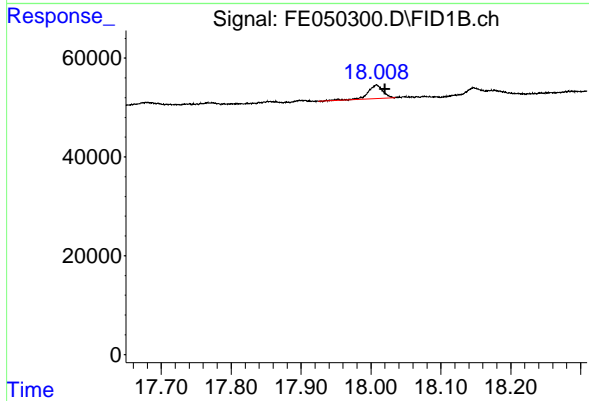
#9 ortho-Terphenyl (SURR)

R.T.: 0.000 min
 Exp R.T. : 11.876 min
 Response: 0
 Conc: N.D.



#12 1-chlorooctadecane (SURR)

R.T.: 13.302 min
 Delta R.T.: -0.010 min
 Response: 83249
 Conc: 0.74 ug/ml



#17 n-Tricontane (C30)

R.T.: 18.008 min
 Delta R.T.: -0.012 min
 Response: 40329
 Conc: 0.30 ug/ml