

Data Path : Z:\pestpcbsrv\HPCHEM1\FID_E\Data\FE092624AL\
 Data File : FE050399.D
 Signal(s) : FID1B.ch
 Acq On : 27 Sep 2024 02:21
 Operator : YP\AJ
 Sample : P4197-02DL 5X
 Misc :
 ALS Vial : 29 Sample Multiplier: 1

Instrument :
 FID_E
ClientSampleId :
 EO-01-092524-E2DL

Manual Integrations
APPROVED

Reviewed By :Yogesh Patel 09/27/2024
 Supervised By :Ankita Jodhani 09/27/2024

Integration File: autoint1.e
 Quant Time: Sep 27 03:12:13 2024
 Quant Method : Z:\pestpcbsrv\HPCHEM1\FID_E\methods\Aliphatic EPH 091024.M
 Quant Title : GC Extractables
 QLast Update : Mon Sep 09 17:11:47 2024
 Response via : Initial Calibration
 Integrator: ChemStation

Volume Inj. : 1 ul
 Signal Phase : Rxi-1ms
 Signal Info : 20M x 0.18mm x 0.18um

| Compound | R.T. | Response | Conc Units |
|--------------------------------|--------|------------|--------------|
| System Monitoring Compounds | | | |
| 9) S ortho-Terphenyl (SURR) | 11.863 | 875436 | 5.884 ug/mlm |
| Spiked Amount | 50.000 | Recovery = | 11.77% |
| 12) S 1-chlorooctadecane (S... | 13.298 | 760670 | 6.772 ug/ml |
| Spiked Amount | 50.000 | Recovery = | 13.54% |

Target Compounds

(f)=RT Delta > 1/2 Window

(m)=manual int.

Data Path : Z:\pestpcbsrv\HPCHEM1\FID_E\Data\FE092624AL\
 Data File : FE050399.D
 Signal(s) : FID1B.ch
 Acq On : 27 Sep 2024 02:21
 Operator : YP\AJ
 Sample : P4197-02DL 5X
 Misc :
 ALS Vial : 29 Sample Multiplier: 1

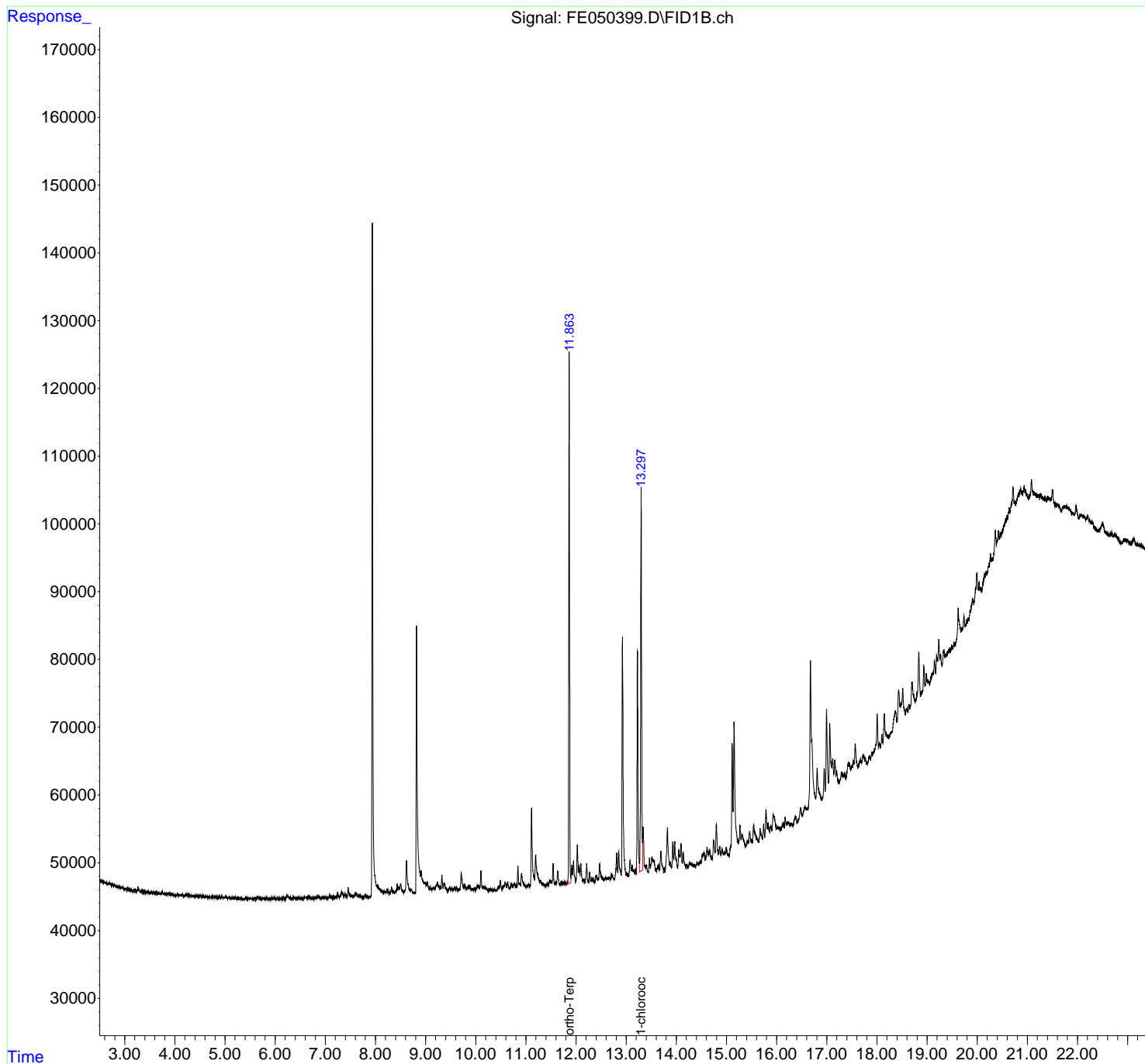
Instrument :
 FID_E
 ClientSampleId :
 EO-01-092524-E2DL

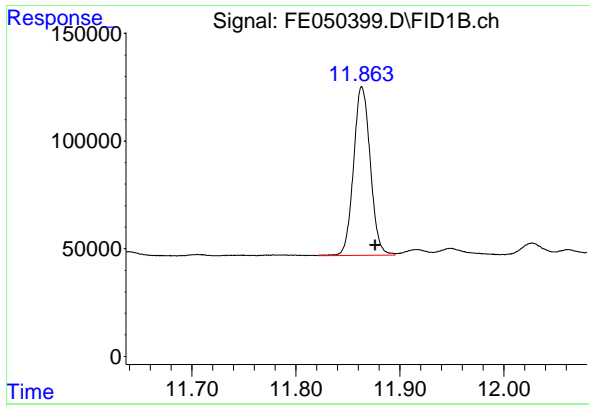
Manual Integrations
APPROVED

Reviewed By :Yogesh Patel 09/27/2024
 Supervised By :Ankita Jodhani 09/27/2024

Integration File: autoint1.e
 Quant Time: Sep 27 03:12:13 2024
 Quant Method : Z:\pestpcbsrv\HPCHEM1\FID_E\methods\Aliphatic EPH 091024.
 Quant Title : GC Extractables
 QLast Update : Mon Sep 09 17:11:47 2024
 Response via : Initial Calibration
 Integrator: ChemStation

Volume Inj. : 1 ul
 Signal Phase : Rxi-1ms
 Signal Info : 20M x 0.18mm x 0.18um





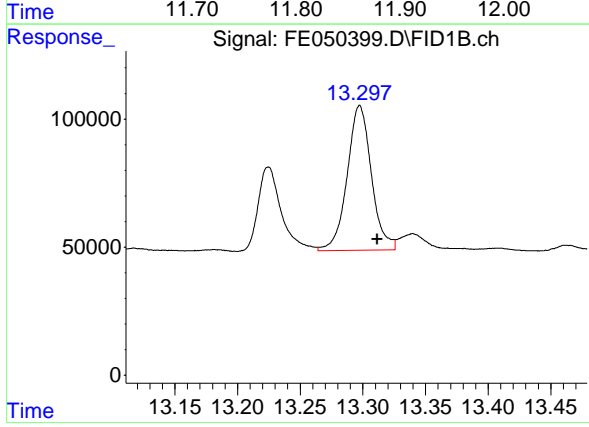
#9 ortho-Terphenyl (SURR)

R.T.: 11.863 min
 Delta R.T.: -0.014 min
 Response: 875436
 Conc: 5.88 ug/ml

Instrument : FID_E
 ClientSampleId : EO-01-092524-E2DL

Manual Integrations
 APPROVED

Reviewed By :Yogesh Patel 09/27/2024
 Supervised By :Ankita Jodhani 09/27/2024



#12 1-chlorooctadecane (SURR)

R.T.: 13.298 min
 Delta R.T.: -0.014 min
 Response: 760670
 Conc: 6.77 ug/ml