

Data Path : Z:\pestpcbsrv\HPCHEM1\FID_E\Data\FE092922AL\
 Data File : FE037836.D
 Signal(s) : FID1B.ch
 Acq On : 28 Sep 2022 20:08
 Operator : YP\AJ
 Sample : N4783-02
 Misc :
 ALS Vial : 10 Sample Multiplier: 1

Instrument :
 FID_E
 ClientSampleId :
 T-2

Integration File: autoint1.e
 Quant Time: Sep 29 02:43:47 2022
 Quant Method : Z:\pestpcbsrv\HPCHEM1\FID_D\methods\Aliphatic EPH 092822.M
 Quant Title : GC Extractables
 QLast Update : Wed Sep 28 06:23:29 2022
 Response via : Initial Calibration
 Integrator: ChemStation

Volume Inj. : 1 ul
 Signal Phase : Rxi-1ms
 Signal Info : 20M x 0.18mm x 0.18um

Compound	R.T.	Response	Conc Units

System Monitoring Compounds			
12) S 1-chlorooctadecane (S... Spiked Amount 50.000	13.033	6905425 Recovery = 102.18%	51.090 ug/ml
Target Compounds			
4) T n-Dodecane (C12)	6.447	64002	0.420 ug/ml
6) T n-Tetradecane (C14)	8.262	79917	0.522 ug/ml
15) T n-Hexacosane (C26)	15.887	53195	0.326 ug/ml
16) T n-Octacosane (C28)	16.831	58993	0.368 ug/ml
17) T n-Tricontane (C30)	17.712	56660	0.354 ug/ml

(f)=RT Delta > 1/2 Window

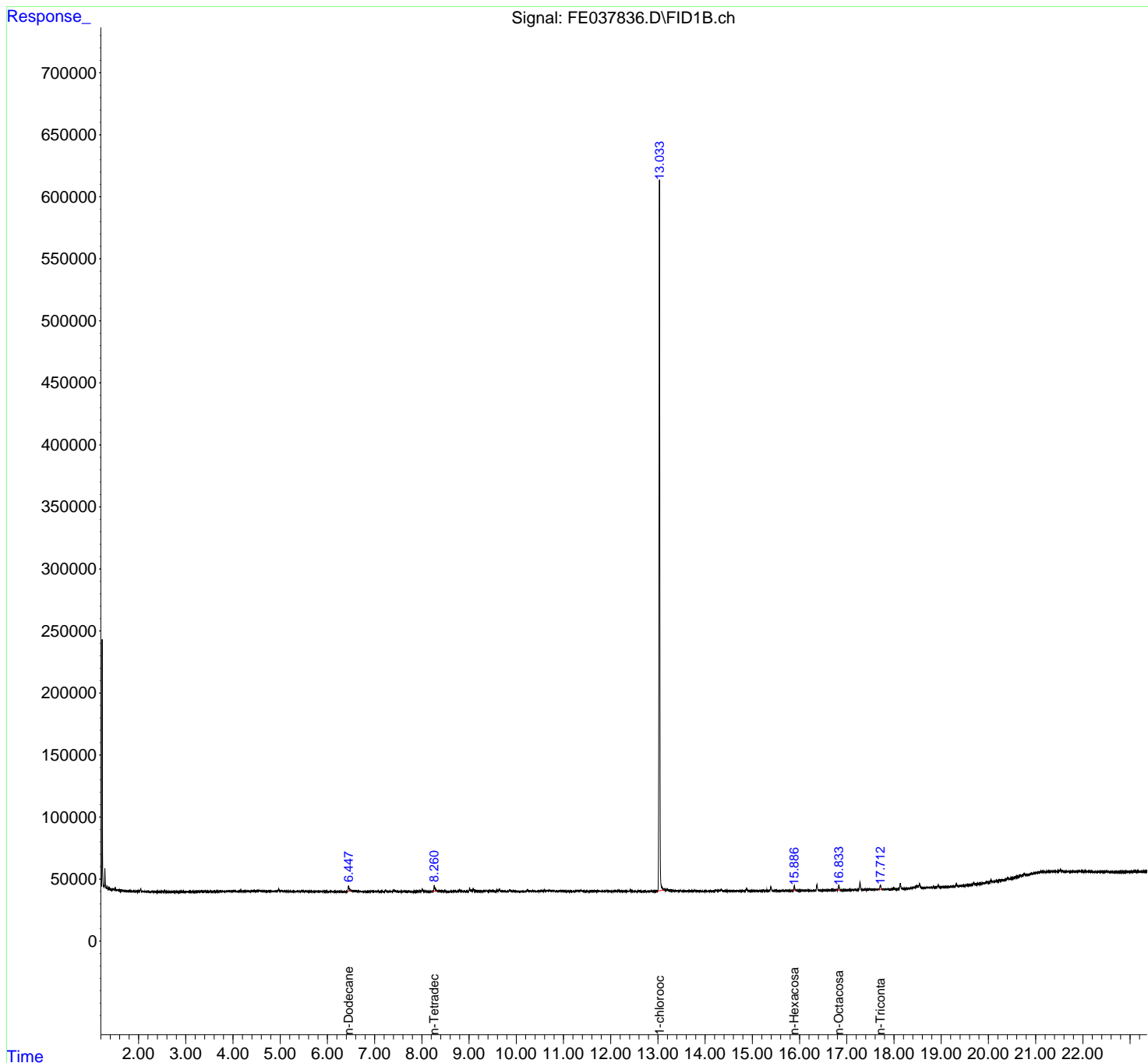
(m)=manual int.

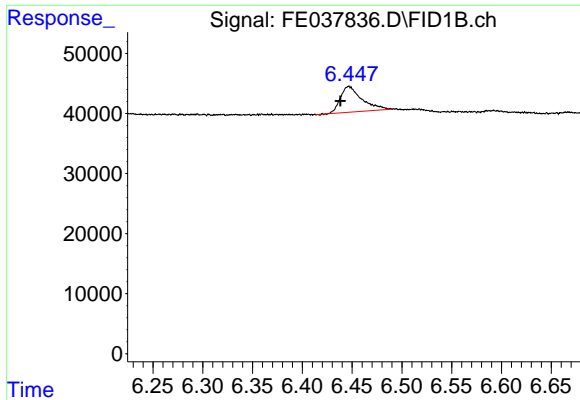
Data Path : Z:\pestpcbsrv\HPCHEM1\FID_E\Data\FE092922AL\
Data File : FE037836.D
Signal(s) : FID1B.ch
Acq On : 28 Sep 2022 20:08
Operator : YP\AJ
Sample : N4783-02
Misc :
ALS Vial : 10 Sample Multiplier: 1

Instrument :
FID_E
ClientSampleId :
T-2

Integration File: autoint1.e
Quant Time: Sep 29 02:43:47 2022
Quant Method : Z:\pestpcbsrv\HPCHEM1\FID_D\methods\Aliphatic EPH 092822.M
Quant Title : GC Extractables
QLast Update : Wed Sep 28 06:23:29 2022
Response via : Initial Calibration
Integrator: ChemStation

Volume Inj. : 1 ul
Signal Phase : Rxi-1ms
Signal Info : 20M x 0.18mm x 0.18um

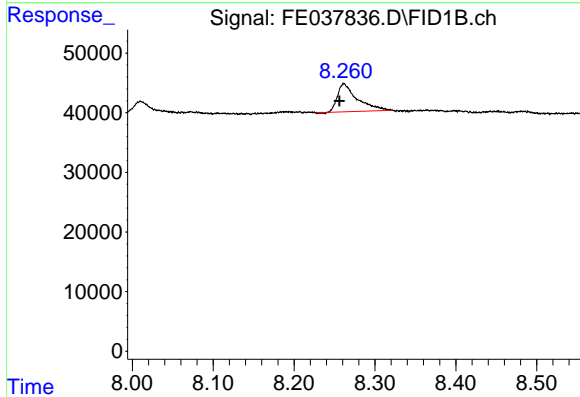




#4 n-Dodecane (C12)

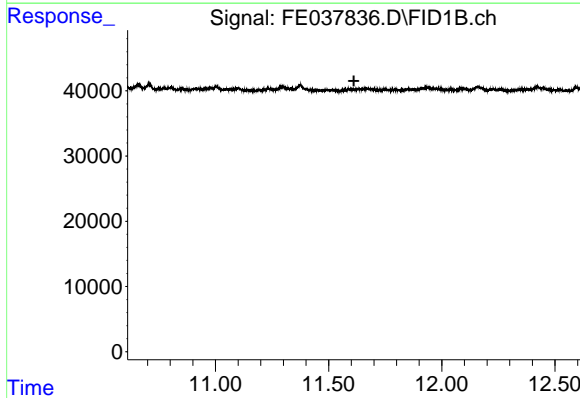
R.T.: 6.447 min
 Delta R.T.: 0.008 min
 Response: 64002
 Conc: 0.42 ug/ml

Instrument :
 FID_E
 ClientSampleId :
 T-2



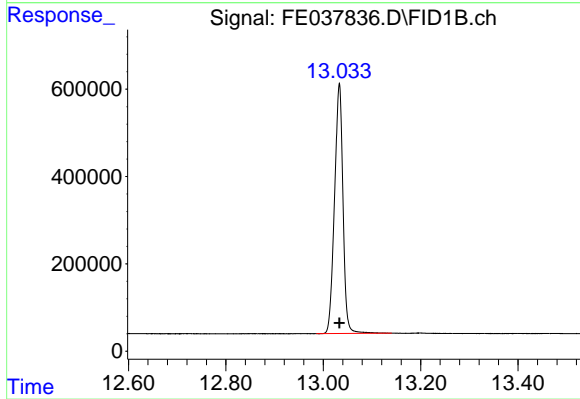
#6 n-Tetradecane (C14)

R.T.: 8.262 min
 Delta R.T.: 0.005 min
 Response: 79917
 Conc: 0.52 ug/ml



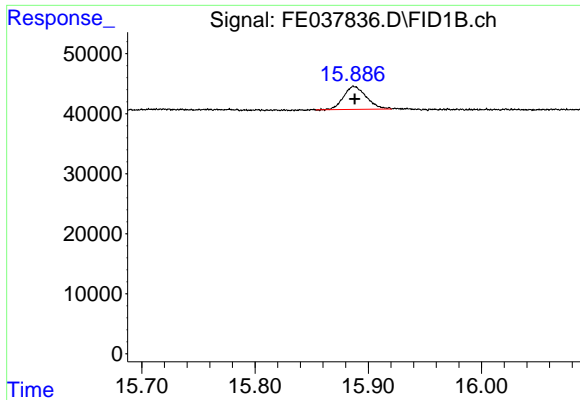
#9 ortho-Terphenyl (SURR)

R.T.: 0.000 min
 Exp R.T. : 11.612 min
 Response: 0
 Conc: N.D.



#12 1-chlorooctadecane (SURR)

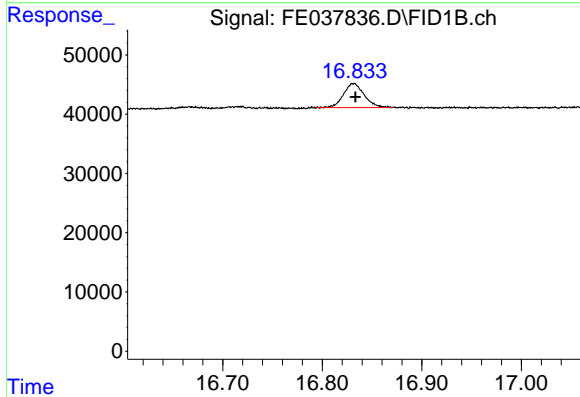
R.T.: 13.033 min
 Delta R.T.: 0.000 min
 Response: 6905425
 Conc: 51.09 ug/ml



#15 n-Hexacosane (C26)

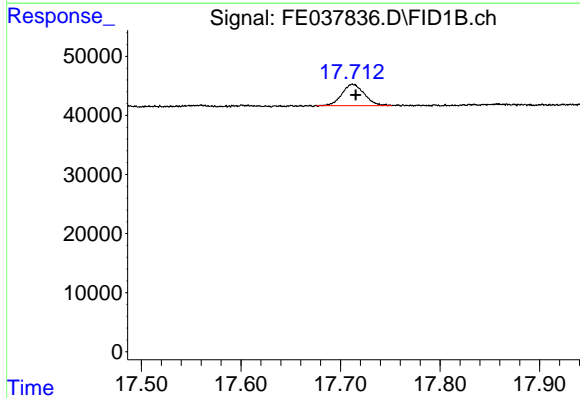
R.T.: 15.887 min
 Delta R.T.: 0.000 min
 Response: 53195
 Conc: 0.33 ug/ml

Instrument :
 FID_E
 ClientSampleId :
 T-2



#16 n-Octacosane (C28)

R.T.: 16.831 min
 Delta R.T.: -0.002 min
 Response: 58993
 Conc: 0.37 ug/ml



#17 n-Tricontane (C30)

R.T.: 17.712 min
 Delta R.T.: -0.003 min
 Response: 56660
 Conc: 0.35 ug/ml