

Data Path : Z:\pestpcbsrv\HPCHEM1\FID_E\Data\FE100120\
 Data File : FE032846.D
 Signal(s) : FID1B.CH
 Acq On : 01 Oct 2020 14:19
 Operator : DD\AJ
 Sample : L4190-11
 Misc :
 ALS Vial : 7 Sample Multiplier: 1

Instrument :
 FID_E
ClientSampleId :
 PAV-B18-092920-0-10

Manual Integrations
APPROVED
 Ankita
 10/2/2020 2:55:14 PM

Integration File: autoint1.e
 Quant Time: Oct 02 01:19:44 2020
 Quant Method : Z:\pestpcbsrv\HPCHEM1\FID_E\methods\FE091420.M
 Quant Title :
 QLast Update : Tue Sep 15 03:21:18 2020
 Response via : Initial Calibration
 Integrator: ChemStation 6890 Scale Mode: Large solvent peaks clipped

Volume Inj. : 1uL
 Signal Phase : Rxi-1ms
 Signal Info : 20mx0.18mmx0.18um

Compound	R.T.	Response	Conc Units

System Monitoring Compounds			
9) S TETRACOSANE-d50 (SURR...	14.686	5249306	16.755 ug/mlm
Target Compounds			

(f)=RT Delta > 1/2 Window (m)=manual int.

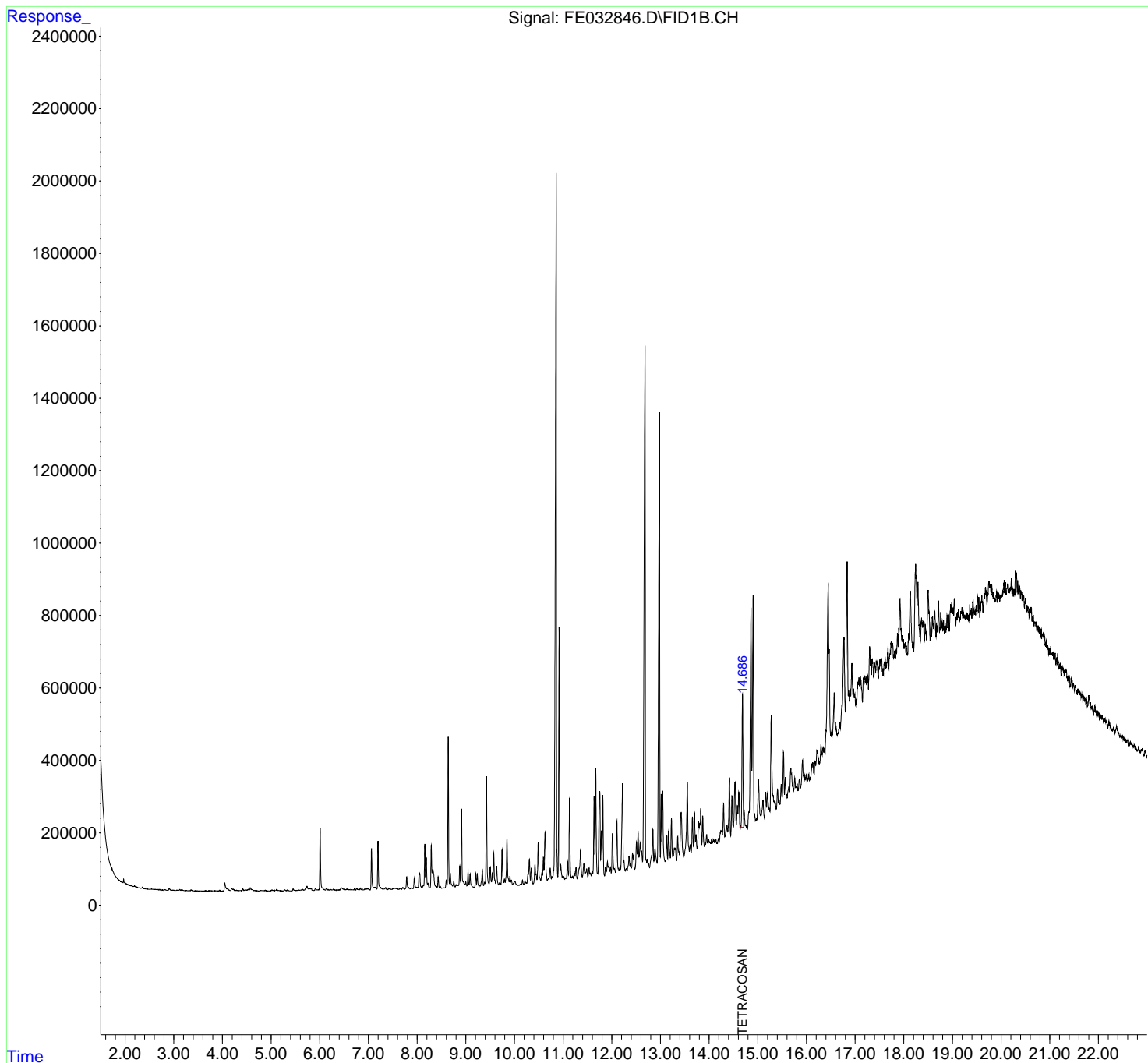
Data Path : Z:\pestpcbsrv\HPCHEM1\FID_E\Data\FE100120\
 Data File : FE032846.D
 Signal(s) : FID1B.CH
 Acq On : 01 Oct 2020 14:19
 Operator : DD\AJ
 Sample : L4190-11
 Misc :
 ALS Vial : 7 Sample Multiplier: 1

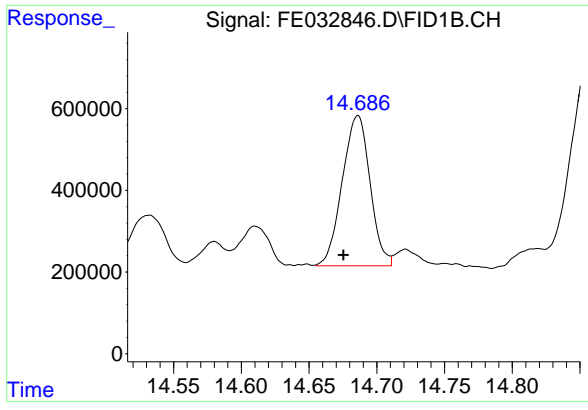
Instrument :
 FID_E
ClientSampleId :
 PAV-B18-092920-0-10

Manual Integrations
APPROVED
 Ankita
 10/2/2020 2:55:14 PM

Integration File: autoint1.e
 Quant Time: Oct 02 01:19:44 2020
 Quant Method : Z:\pestpcbsrv\HPCHEM1\FID_E\methods\FE091420.M
 Quant Title :
 QLast Update : Tue Sep 15 03:21:18 2020
 Response via : Initial Calibration
 Integrator: ChemStation 6890 Scale Mode: Large solvent peaks clipped

Volume Inj. : 1uL
 Signal Phase : Rxi-1ms
 Signal Info : 20mx0.18mmx0.18um





#9 TETRACOSANE-d50 (SURROGATE)

R.T.: 14.686 min
Delta R.T.: 0.011 min
Response: 5249306
Conc: 16.75 ug/ml m

Instrument :
FID_E
ClientSampleId :
PAV-B18-092920-0-10

Manual Integrations
APPROVED
Ankita
10/2/2020 2:55:14 PM