

Data Path : Z:\pestpcbsrv\HPCHEM1\FID_E\Data\FE100322AL\
 Data File : FE037900.D
 Signal(s) : FID1B.ch
 Acq On : 03 Oct 2022 18:21
 Operator : YP\AJ
 Sample : N4907-06
 Misc :
 ALS Vial : 17 Sample Multiplier: 1

Instrument :
 FID_E
ClientSampleId :
 VNJ-232-EPH-2

Manual Integrations
APPROVED

Reviewed By :Yogesh Patel 10/04/2022
 Supervised By :Ankita Jodhani 10/04/2022

Integration File: autoint1.e
 Quant Time: Oct 04 04:39:53 2022
 Quant Method : Z:\pestpcbsrv\HPCHEM1\FID_D\methods\Aliphatic EPH 092822.M
 Quant Title : GC Extractables
 QLast Update : Wed Sep 28 06:23:29 2022
 Response via : Initial Calibration
 Integrator: ChemStation

Volume Inj. : 1 ul
 Signal Phase : Rxi-1ms
 Signal Info : 20M x 0.18mm x 0.18um

Compound	R.T.	Response	Conc Units

System Monitoring Compounds			
9) S ortho-Terphenyl (SURR)	11.610	7885042	45.588 ug/ml
Spiked Amount	50.000	Recovery	= 91.18%
12) S 1-chlorooctadecane (S...	13.030	9192316	68.009 ug/mlm
Spiked Amount	50.000	Recovery	= 136.02%

Target Compounds

(f)=RT Delta > 1/2 Window

(m)=manual int.

Data Path : Z:\pestpcbsrv\HPCHEM1\FID_E\Data\FE100322AL\
 Data File : FE037900.D
 Signal(s) : FID1B.ch
 Acq On : 03 Oct 2022 18:21
 Operator : YP\AJ
 Sample : N4907-06
 Misc :
 ALS Vial : 17 Sample Multiplier: 1

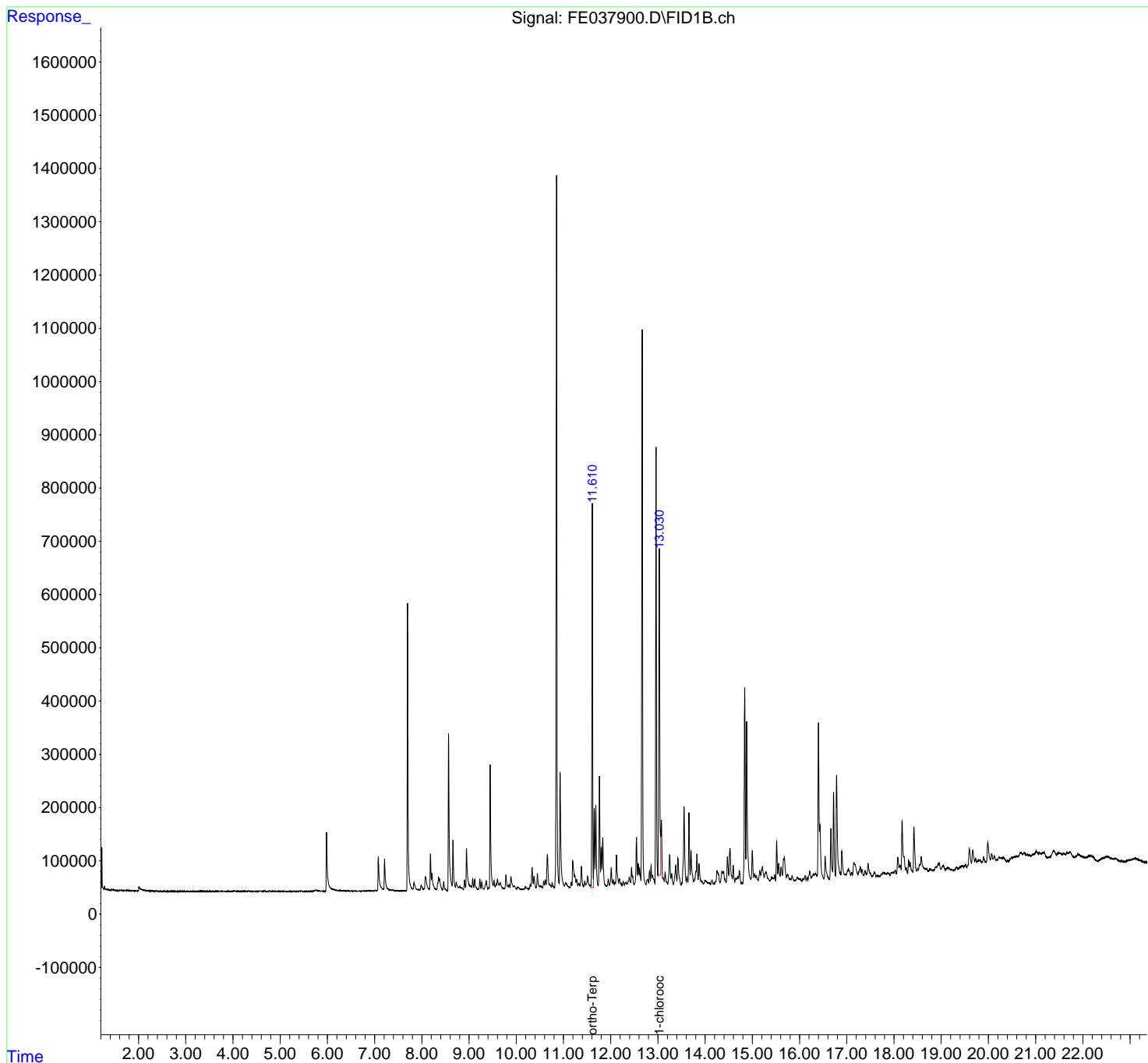
Instrument :
 FID_E
ClientSampleId :
 VNJ-232-EPH-2

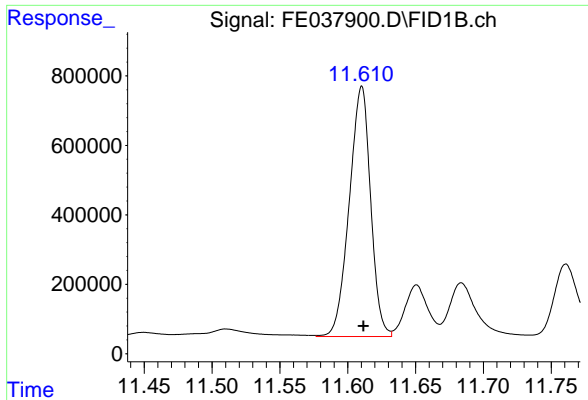
**Manual Integrations
 APPROVED**

Reviewed By :Yogesh Patel 10/04/2022
 Supervised By :Ankita Jodhani 10/04/2022

Integration File: autoint1.e
 Quant Time: Oct 04 04:39:53 2022
 Quant Method : Z:\pestpcbsrv\HPCHEM1\FID_D\methods\Aliphatic EPH 092822.M
 Quant Title : GC Extractables
 QLast Update : Wed Sep 28 06:23:29 2022
 Response via : Initial Calibration
 Integrator: ChemStation

Volume Inj. : 1 ul
 Signal Phase : Rxi-1ms
 Signal Info : 20M x 0.18mm x 0.18um





#9 ortho-Terphenyl (SURR)

R.T.: 11.610 min
 Delta R.T.: -0.001 min
 Response: 7885042
 Conc: 45.59 ug/ml

Instrument :

FID_E

ClientSampleId :

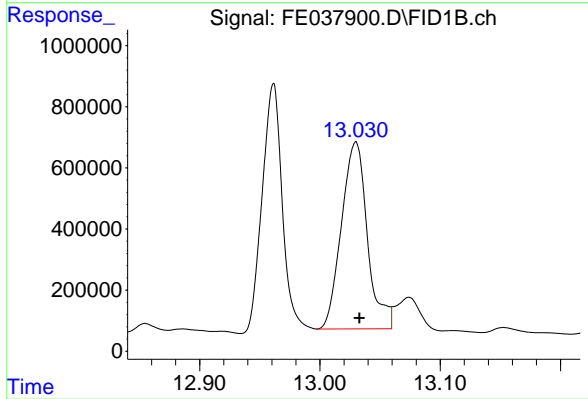
VNJ-232-EPH-2

Manual Integrations

APPROVED

Reviewed By :Yogesh Patel 10/04/2022

Supervised By :Ankita Jodhani 10/04/2022



#12 1-chlorooctadecane (SURR)

R.T.: 13.030 min
 Delta R.T.: -0.003 min
 Response: 9192316
 Conc: 68.01 ug/ml m