

Data Path : Z:\pestpcbsrv\HPCHEM1\FID_E\Data\FE100523AL\
 Data File : FE044622.D
 Signal(s) : FID1B.ch
 Acq On : 05 Oct 2023 18:36
 Operator : YP\AJ
 Sample : 04731-07
 Misc :
 ALS Vial : 19 Sample Multiplier: 1

Instrument :
 FID_E
 ClientSampleId :
 DTP-3

Integration File: autoint1.e
 Quant Time: Oct 05 23:57:19 2023
 Quant Method : Z:\pestpcbsrv\HPCHEM1\FID_E\methods\Aliphatic EPH 092523.M
 Quant Title : GC Extractables
 QLast Update : Mon Sep 25 11:06:21 2023
 Response via : Initial Calibration
 Integrator: ChemStation

Volume Inj. : 1 ul
 Signal Phase : Rxi-1ms
 Signal Info : 20M x 0.18mm x 0.18um

Compound	R.T.	Response	Conc Units
System Monitoring Compounds			
9) S ortho-Terphenyl (SURR)	11.926	7589664	40.427 ug/ml
Spiked Amount	50.000	Recovery	= 80.85%
12) S 1-chlorooctadecane (S...	13.367	6997376	51.435 ug/ml
Spiked Amount	50.000	Recovery	= 102.87%

Target Compounds

(f)=RT Delta > 1/2 Window

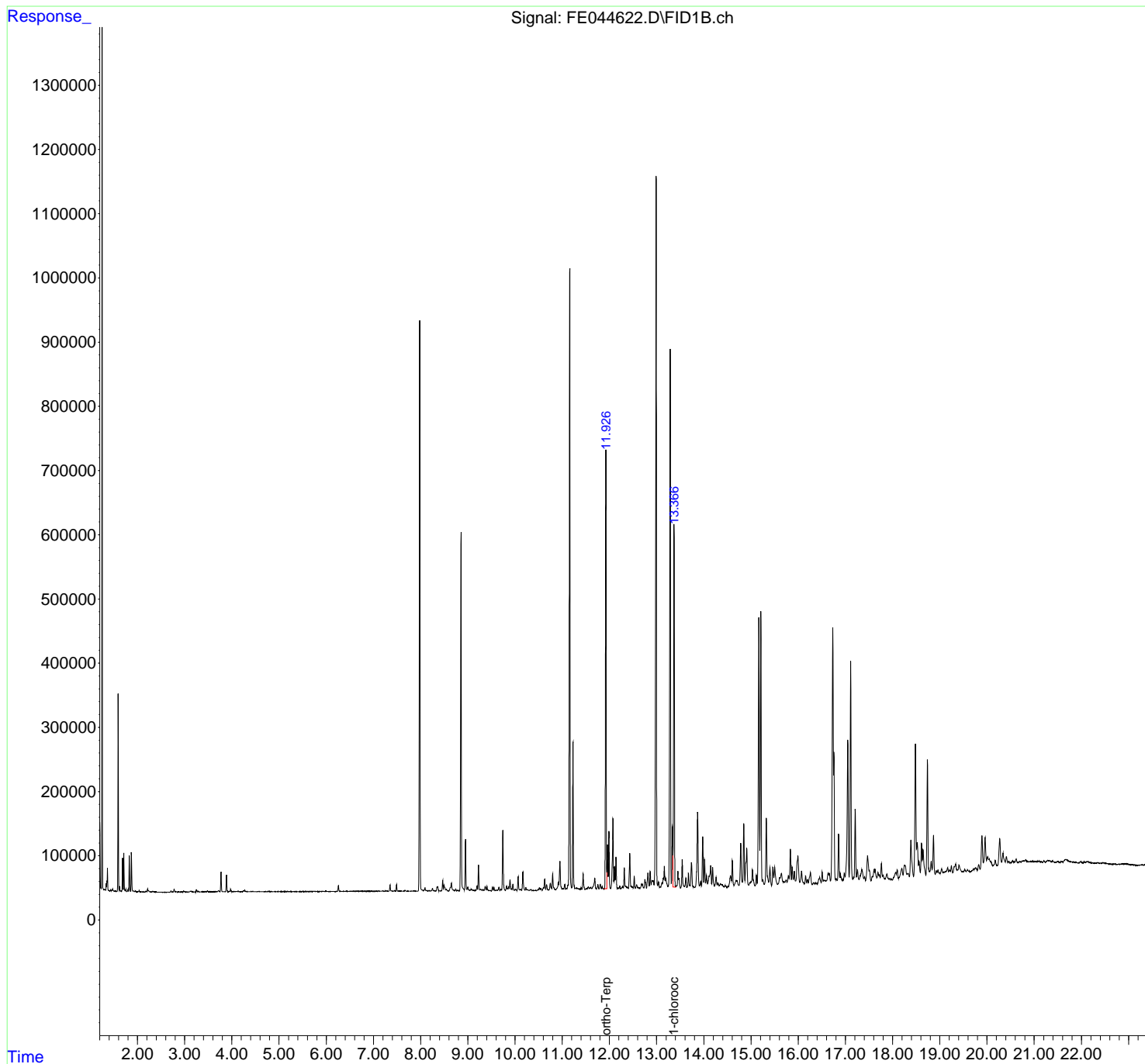
(m)=manual int.

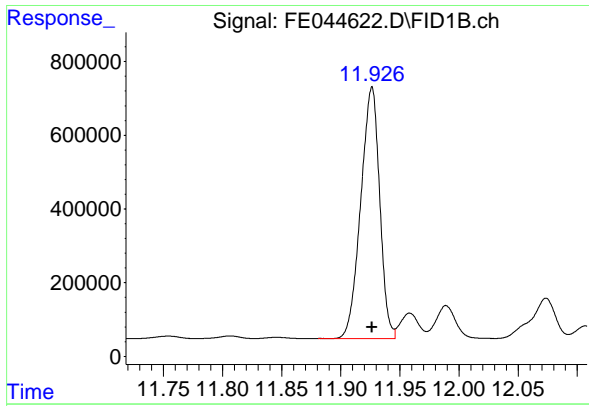
Data Path : Z:\pestpcbsrv\HPCHEM1\FID_E\Data\FE100523AL\
 Data File : FE044622.D
 Signal(s) : FID1B.ch
 Acq On : 05 Oct 2023 18:36
 Operator : YP\AJ
 Sample : 04731-07
 Misc :
 ALS Vial : 19 Sample Multiplier: 1

Instrument :
 FID_E
 ClientSampleId :
 DTP-3

Integration File: autoint1.e
 Quant Time: Oct 05 23:57:19 2023
 Quant Method : Z:\pestpcbsrv\HPCHEM1\FID_E\methods\Aliphatic EPH 092523.M
 Quant Title : GC Extractables
 QLast Update : Mon Sep 25 11:06:21 2023
 Response via : Initial Calibration
 Integrator: ChemStation

Volume Inj. : 1 ul
 Signal Phase : Rxi-1ms
 Signal Info : 20M x 0.18mm x 0.18um

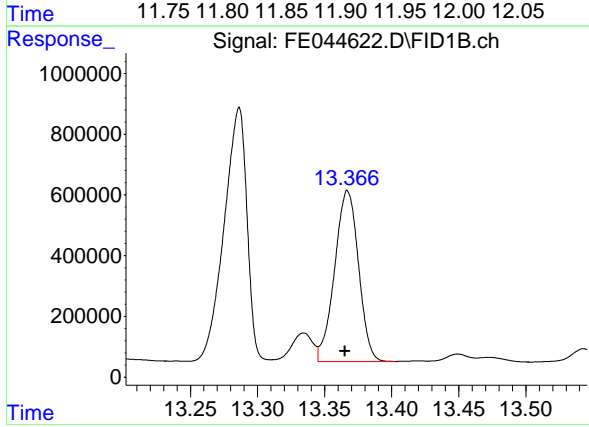




#9 ortho-Terphenyl (SURR)

R.T.: 11.926 min
Delta R.T.: 0.000 min
Response: 7589664
Conc: 40.43 ug/ml

Instrument :
FID_E
ClientSampleId :
DTP-3



#12 1-chlorooctadecane (SURR)

R.T.: 13.367 min
Delta R.T.: 0.002 min
Response: 6997376
Conc: 51.43 ug/ml